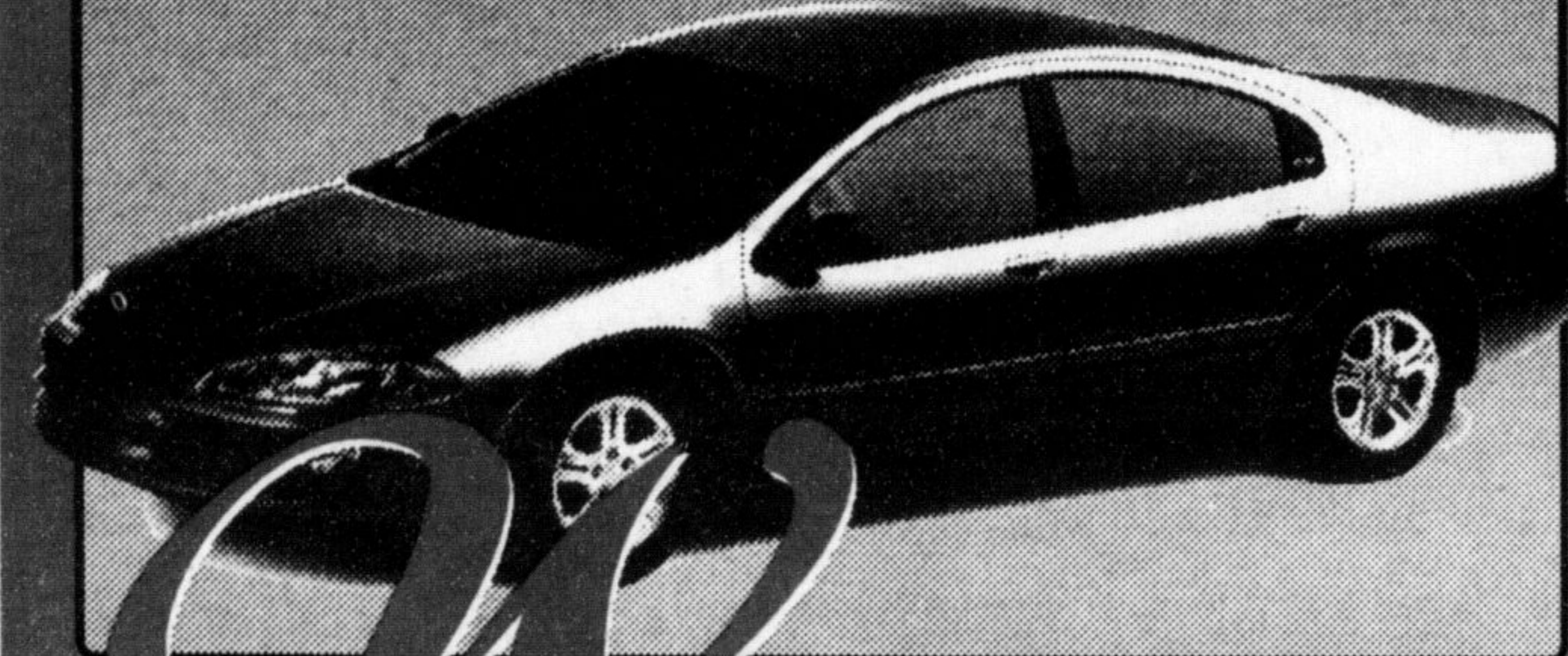


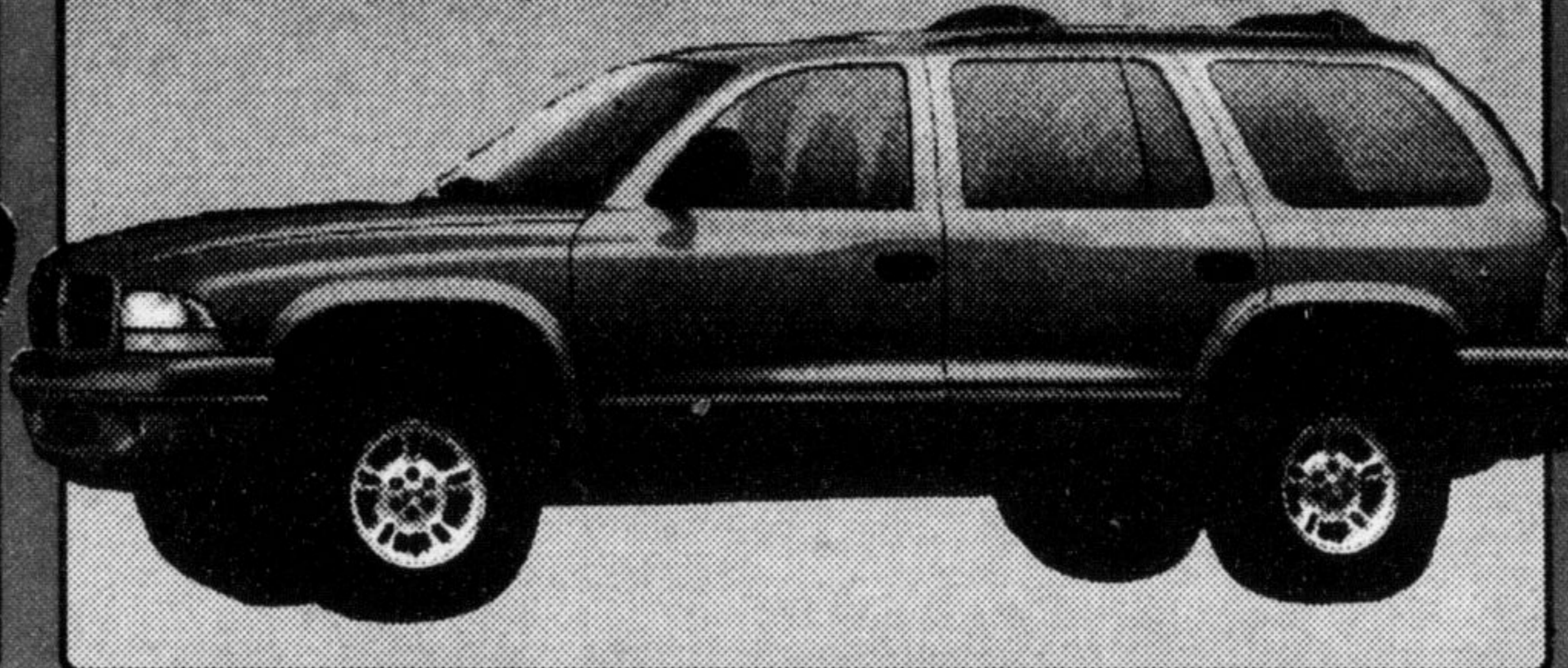
**MILTON**  
**DODGE-JEEP**

*We're ready to deal!*

**98 Intrepid**



**98 Durango**



**98 Concorde**



*We have a great selection, with unbeatable prices.*

**Our cars come to you certified, warrantied & reconditioned.**

**93 Intrepid**



Air, tilt, cruise, cass., PW, PL. LIKE NEW!

**\$9,995\***

**94 Buick Century**



Air, tilt, cruise, cass., PW, PL. ONE OWNER! Only 60,000 kms.

**\$12,995\***

**95 Jeep Grand Cherokee**



4X4 Loaded, Loaded.

**\$22,800\***

**Our reputation rides with you!**

**GREAT PRICES ARE POPPING UP!**

97 Plymouth Neon Highline	4 door, red	\$12,995	95 Chrysler Intrepid ES	platinum	\$15,995	93 Plymouth Gr. Voyager SE	grey	\$12,495
97 Dodge Gr. Caravan LE	green	\$19,995	95 Jeep Grand Cherokee	red	\$23,995	93 Dodge Caravan	blue	\$10,495
97 Dodge Gr. Caravan SE	grey	\$23,495	94 Dodge Shadow	aqua	\$7,995	93 Chrysler Town & Country	white	\$15,995
97 Dodge Stratus	4 door, blue	\$15,495	94 Dodge Spirit	4 door, green	\$11,995	92 Mercury Sable Station Wagon	black	\$6,995
95 Plymouth Neon Highline	black	\$9,995	94 Jeep Gr. Cherokee Laredo	green	\$19,599	91 Ford Tempo	4 door, red	\$5,995
95 Plymouth Neon Sport	green	\$10,995	94 Jeep Gr. Cherokee Laredo	black	\$19,995	91 Dodge Shadow	4 door, silver	\$5,995
95 Dodge Ram 2500 SLT, 2WD	black/silver	\$23,995	94 Buick Century	4 door, blue	\$13,995	91 Ford XLT Club Cab F150	blue	\$10,995
95 Jeep Cherokee Country	4X4, black	\$18,995	94 GM Safari Van	blue	\$12,995	90 Dodge Ram Pick Up	black	\$8,495



**PHIL CIANTAR**  
General Sales Manager



**DWAIN MCGILLVRAY**  
Used Vehicle Manager



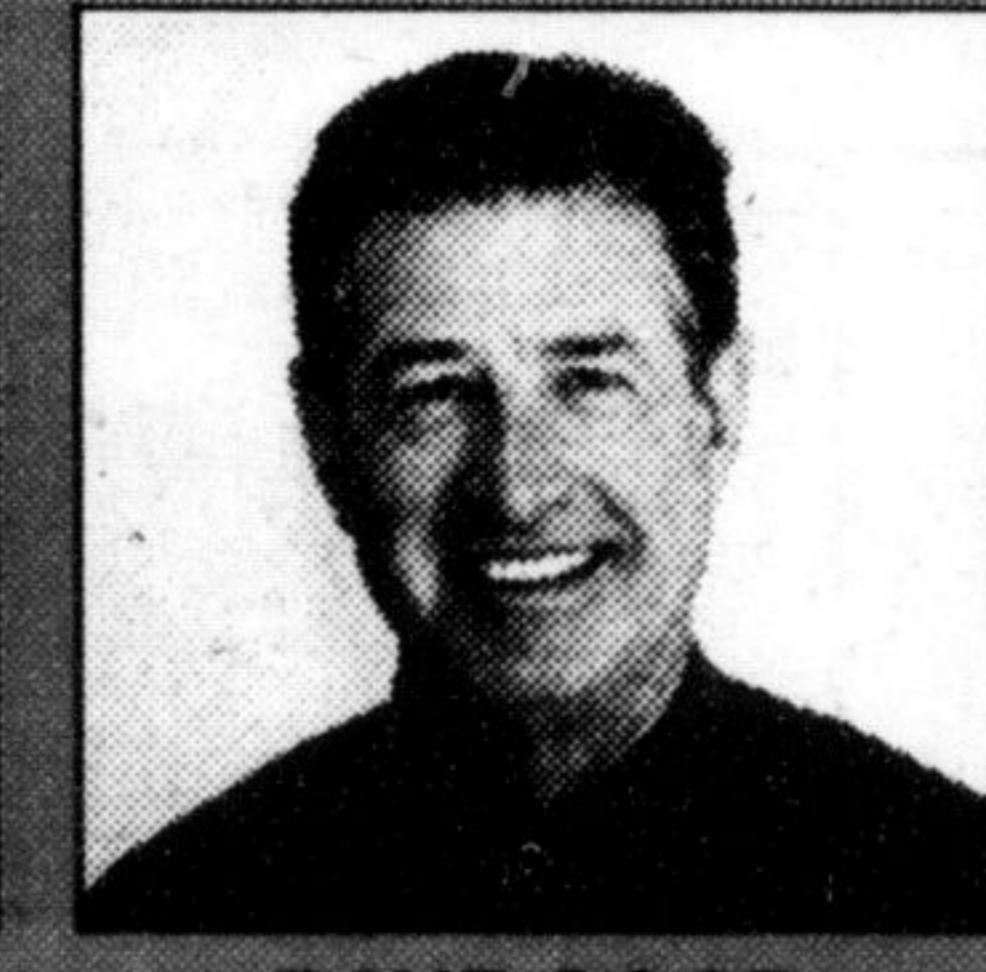
**TRACY ELLIOTT**  
Fleet Manager



**RACHEL SEED**  
Business Manager



**RAY DUNBAR**  
Sales & Leasing Representative



**DAVE GOOD**  
Sales & Leasing Representative



**SEAN GIBSON**  
Sales & Leasing Representative

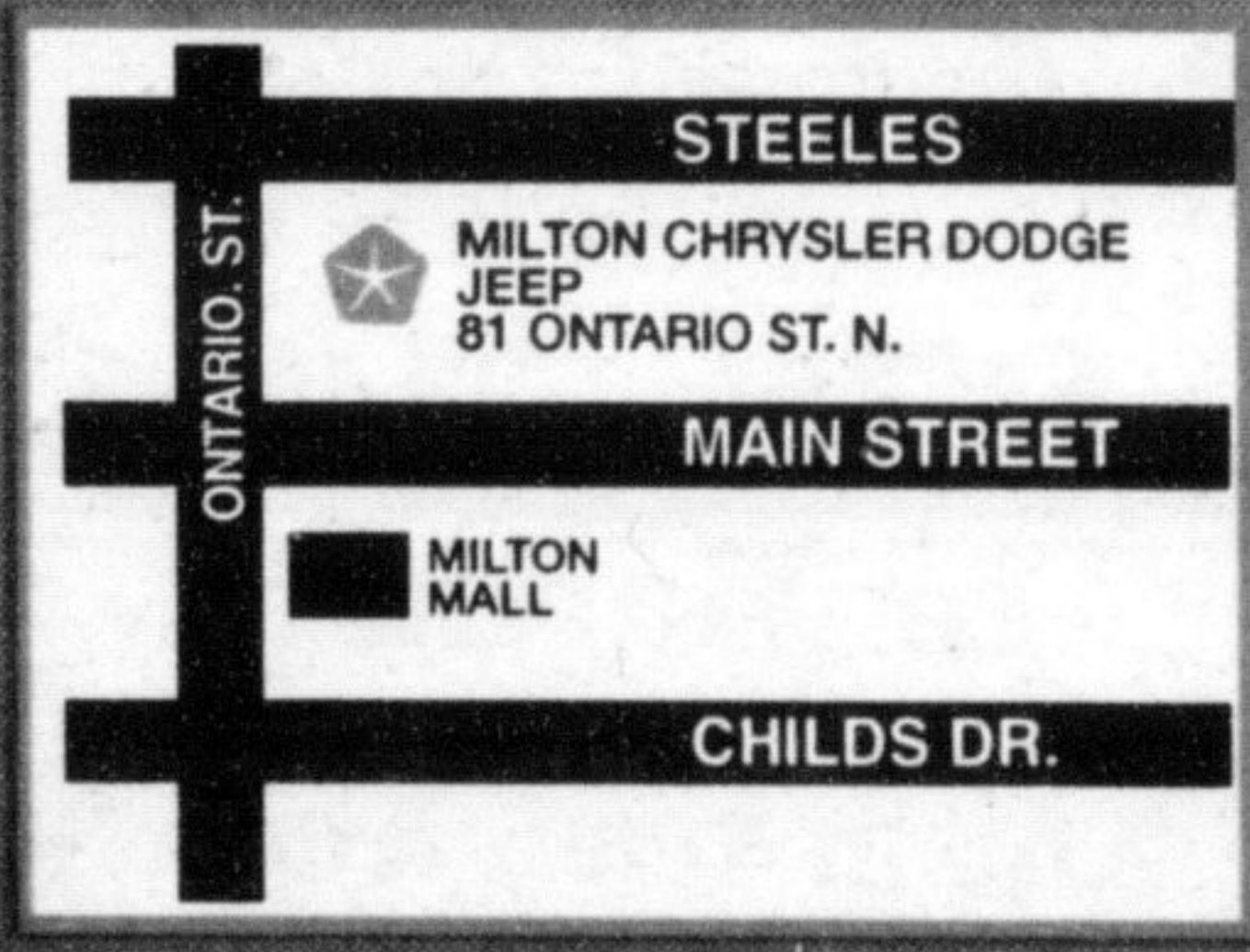


**LISA COULTER-COOK**  
Sales & Leasing Representative

**NOBODY BEATS MILTON CHRYSLER!**  
**878-8877**

**MILTON**  
**DODGE-JEEP**

**81 ONTARIO ST. N. MILTON**



\* Plus GST, PST & Plates