



GET MOVING IN '98

RE/MAX Miltowne Realty Corp.

e-mail: miltowne@globalserve.net

373-7777

22 ONTARIO ST. S.
INDEPENDENTLY OWNED & OPERATED



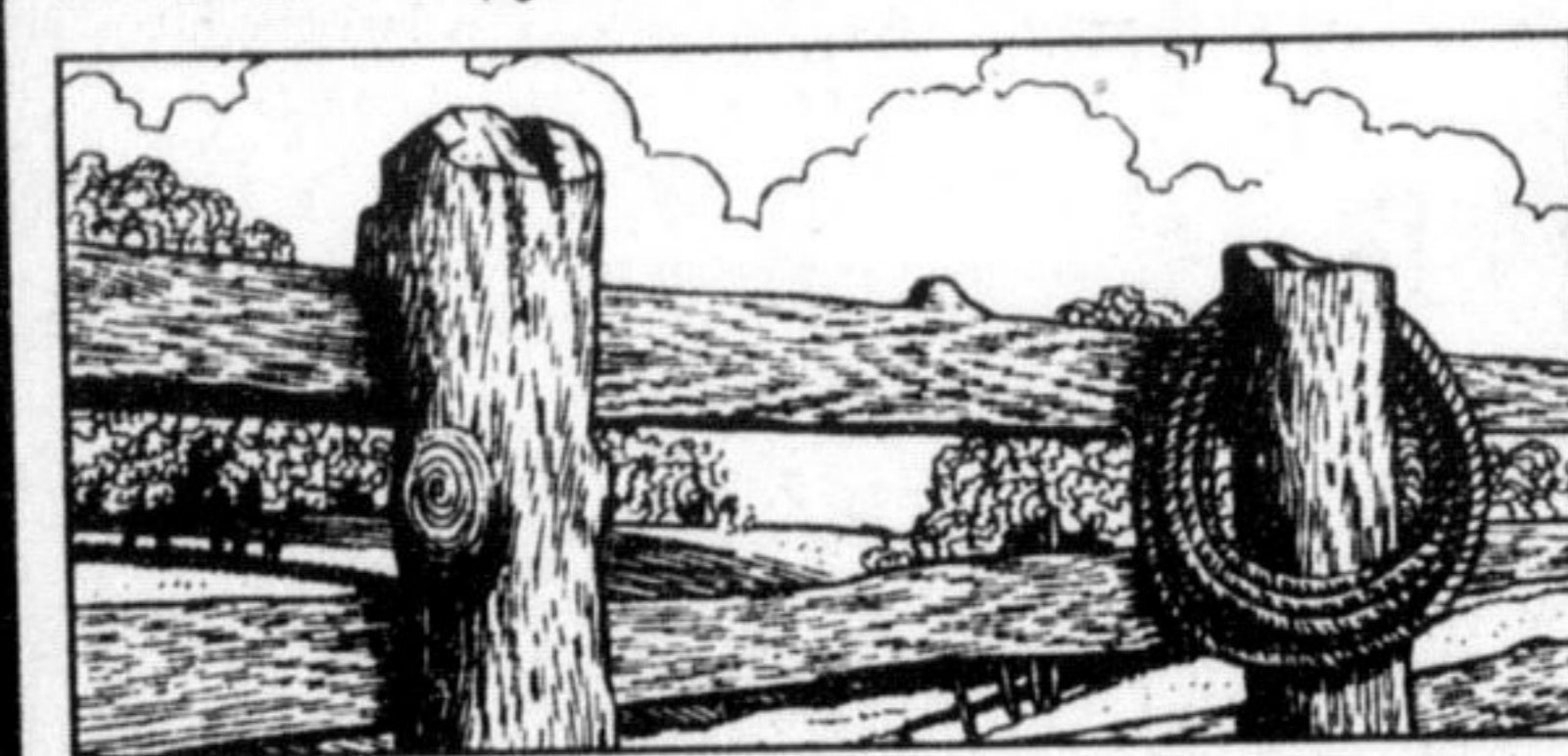
MIKE MORGAN
Associate Broker

Office: 878-7777

Res.: 878-8093



You'll be amazed when you see how a fabulous renovation has created a home of distinctive quality and design. The gorgeous pine kitchen opens to a spacious living room that's great for entertaining and the unique open concept master bedroom with railing overlooks the main level. Main floor laundry, two washrooms. A huge deck overlooking the countryside and an oversized garage compliment the endless list of upgrades. Don't miss out. Call Mike \$209,900.



Over 3 acres of natural tree setting nestled into the Niagara Escarpment. Picturesque building lot located just north of town. Carve your perfect homesite into the unique natural landscape. Call Mike \$99,900

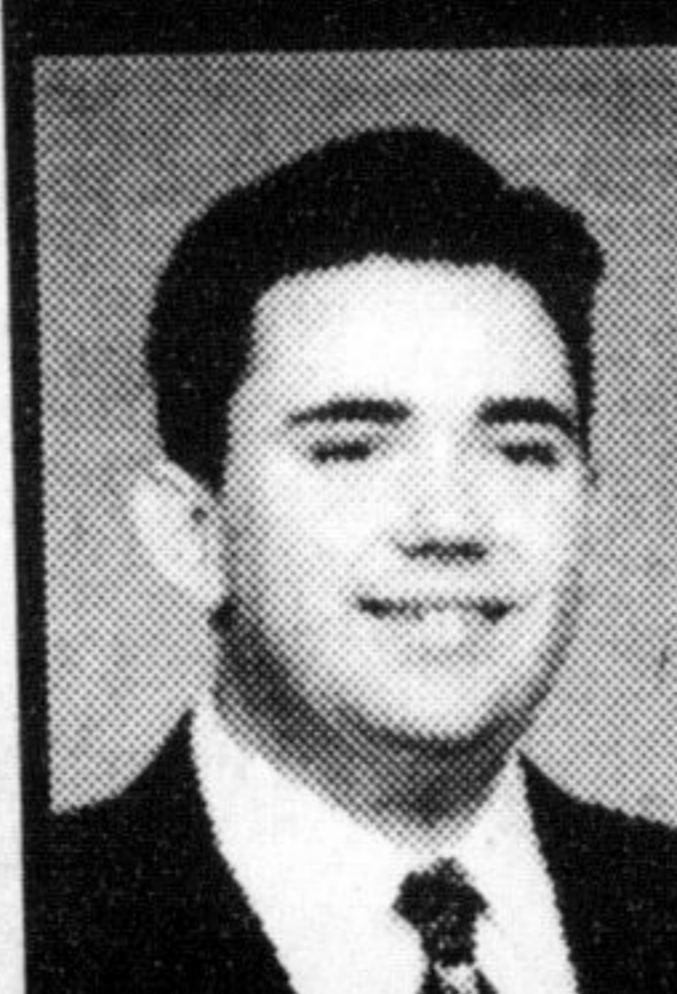


Classic 1850 built two story, five bedroom home preserved to reflect the era with a Nanny's quarters addition (1989) to total approx. 5,000 sq.ft. The centre hall plan, the high ceilings, wood floors and extensive trim reveal the grace of yesteryear. Located on 1.4 scenic acres between Milton and Oakville. Call Mike \$393,900.



NEW PRICE
NOW IS THE TIME to make your move to this quiet crescent home. Cozy evenings can be spent by the fire in the main floor family room or in the gorgeous rec room with games area and bar. You'll love the bright spacious kitchen with huge bow window over looking inground pool and private treed yard. All brick and loaded. Don't miss out. Call Mike \$274,900. **NOW \$266,900.**

E-MAIL MILTOWNE @ GLOBALSERVE.NET LIST WITH A RE/MAX PROFESSIONAL



Glen Thomas
Associate Broker
878-7777

AN INVESTMENT ENCORE



In-town opportunity. Solid brick home on a double lot. might be able to sever off a separate lot and make some money, or build a new dream home. Call for details \$247,500

NEW LISTING



One bedroom unit in Village Parc known as the "BAYFIELD". Large living room-dining room combo. This is Milton's finest condo. \$132,500.



Gary Thomas
Broker/Owner
Res. 875-3700
878-7777

25 YEARS
Above the Crowd[®]

List with Milton's consistent real estate leader!

RESULTS DO COUNT.

BETTY INGLE R.R.S.
Sales Representative
Registered Relocation Specialist
Office: 878-7777
Tor. Line: 825-4485

FOR THE GARDEN ENTHUSIAST



Spring is around the corner so phone for your appointment today with Betty. This home offers 4 bedrooms, combination living room/dining room, den, self contained apartment, 2 bedrooms, private entrance and close to schools. Priced to sell \$247,900.

PALOMINO RANCH

Discover this special subdivision. Lots of interest being generated. 1/2 acre to 1 acre lots. Bungalows & 2 storeys available. Renowned local builders. Call for details.

GOTHIC STONE

Be one of the lucky few who own a Heritage award winner. 1876 Gothic schoolhouse. Large principal rooms, fully restored on a large village lot. Call for details. \$425,000.

SCARCE AS HEN'S TEETH

1500 square foot industrial unit. 400 square feet of office. Large drive-in door & mezzanine storage. Only \$77,500

OUTGROWN YOUR PRESENT HOME

Call Glen or Gary in today!
CATCH THE SPRING MARKET

INTERVIEW ONE OF US BEFORE YOU LIST YOUR HOME! CALL FOR EVALUATION TODAY!

KEVIN HOWDEN
Sales Representative
Office878-7777
Toronto825-4485
Res.854-2973

POTENTIAL PROFESSIONAL USE OR CALL IT HOME
Absolute charm & character, this elegant 1918 built home embraces many original features. Magnificent oak staircase, pine floors, high ceilings & baseboards, & pocket doors. Roof reshingled '92, new furnace & C/A '92. Separate upper level living quarters with own entrance. Triple car garage with loft.
Asking\$409,000.

COURT LOCATION

ATTRACTIVE WELL MAINTAINED BACKSPLIT with inground pool in beautifully landscaped yard. Great for entertaining. Features all new windows 96, aluminum eaves & soffits, central air, central vac, ceramic flooring in kitchen & rec room. Don't miss this opportunity.
Please call Kevin \$294,900. **NOW \$199,900.**

INDUSTRIAL UNIT
BRONTE ST. LOCATION.
Approx. 1600 sq.ft., 10 ft x 12 ft bay door, mezzanine ...
\$85,000.

- Gary Thomas Broker/Owner 878-7777
- Heather Ashbee-Meehan 878-7777
- Carol M. Brooks 875-0067
- Carole D. Budworth 878-8545
- Gladys Cranford 875-3039
- Joseph Fedacsek 854-9949
- Ron Furik 878-3337
- Sheryl Gray 875-1121
- Clayton Hackenbrook 875-0771
- Richard Hierman 878-5806
- Teri Lynn Hilson 878-7777
- Kevin Howden 878-7777
- Betty Ingle 878-7777
- Sharon Kerley 854-0474
- Lindsay McLaren 854-2451
- Maurice Miljour 876-4577
- Lloyd Moore 878-7575
- Mike Morgan 878-8093
- Paul Page 878-2995
- John (J.P.) Pears 878-6859
- Scott B. Prior 878-7777
- Jean Snowden 878-3155
- Anne Taylor 854-9833
- Glen Thomas 876-0987
- Florence Walter 878-0231
- Katrina Walton 878-1588

JEAN SNOWDEN
SALES REP.
878-7777
Office
24 HOURS

MANY FACETS OF FINE LIVING ARE EVIDENT
In these fine homes now being built at Palomino Ranch, near Carlisle Golf Club. 1/2 acre and 1 acre lots in an area close to escarpment and conservation lands. From \$329,000.

HELP!!
I need these fine homes now being built at Palomino Ranch, near Carlisle Golf Club. 1/2 acre and 1 acre lots in an area close to escarpment and conservation lands. From \$329,000.

HEATHER ASHBEE-MEEHAN
Sales Representative
Office: 878-7777
Toronto Line: 825-4485

SPACIOUS MEADOWBROOK SIDESPLIT

COUNTRY LOT
Mature trees. Best Buy!
Gently rolling. No levies or GST.
\$96,900.
44 ACRES
Beautiful meadows & forest
\$199,000

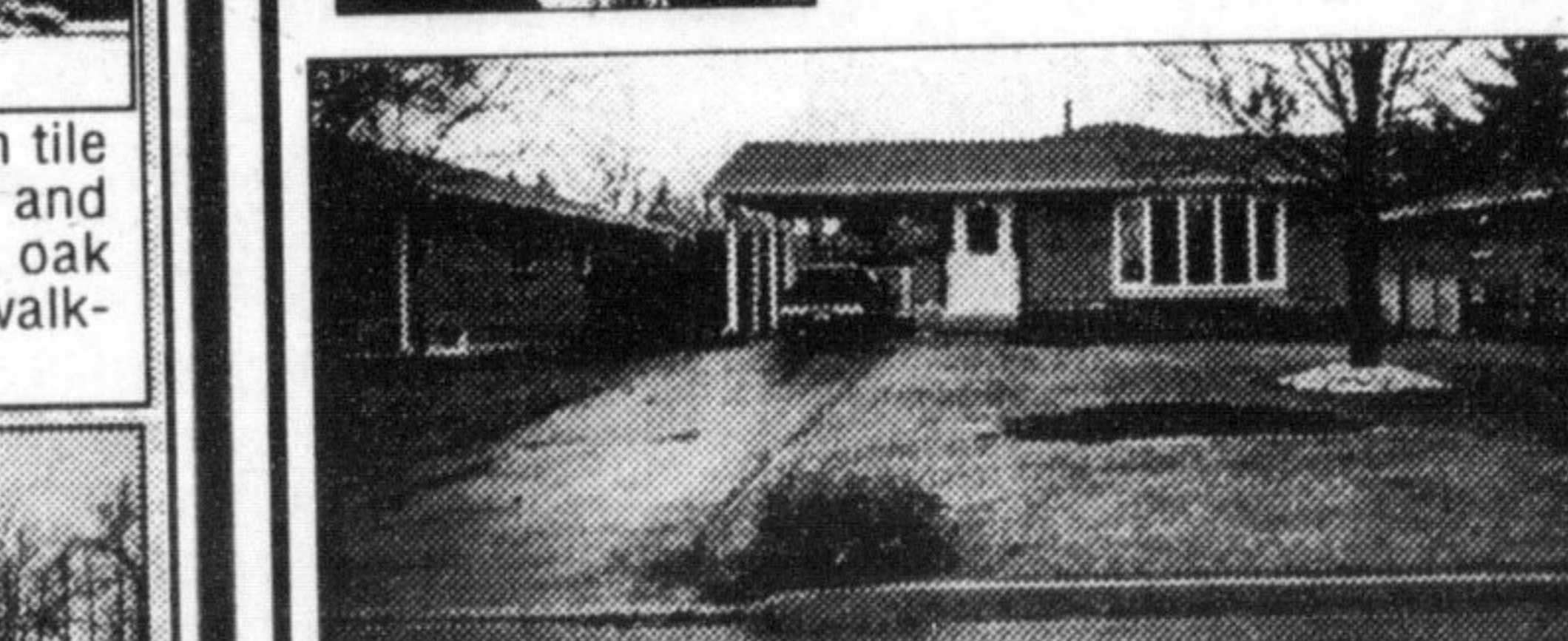
ROOM TO ROOM

EXECUTIVE HOME on 1.36 acres. Warm Mexican tile floor through kitchen & foyer, main floor office and family room with F.P. and BI oak bookcases, oak hardwood. 4 bdrms, his and her W/I closets, 3 walk-outs to wrap around deck. \$349,900.



BROOKVIEW ESTATES 4 BR, 3 bath, quiet court - very desirable location. Oak kitchen and hardwood floors complemented by attractive ceramic foyer and kitchen floors. Natural gas heat. \$299,000.

RICHARD HIERMAN
Sales Representative
Office: 878-7777
Toronto: 825-4485
Res: 878-5806
hierman@globalserve.on.ca
http://www.mls.ca



DORSET PARK
Terrific backsplit on quiet court. Lots of upgrades including windows, eaves, soffits, central air and inground pool. Make this summer a memorable one.
Call Richard Hierman, Sales Rep. Re/Max Miltowne Realty Corp. (905) 825-4485.