

The Canadian  
Champion

# BEST HOMES

MILTON, ONTARIO

878-2341

February 10, 1998



**\$219,000** RE/MAX®

**THE BEST OF BOTH WORLDS** Country brick and stone bungalow close to town, double lot, fenced backyard, oversized double garage. In-law/nanny or rental suite to help pay the mortgage - was renting for \$850.00 per month. Thirty day closing available.

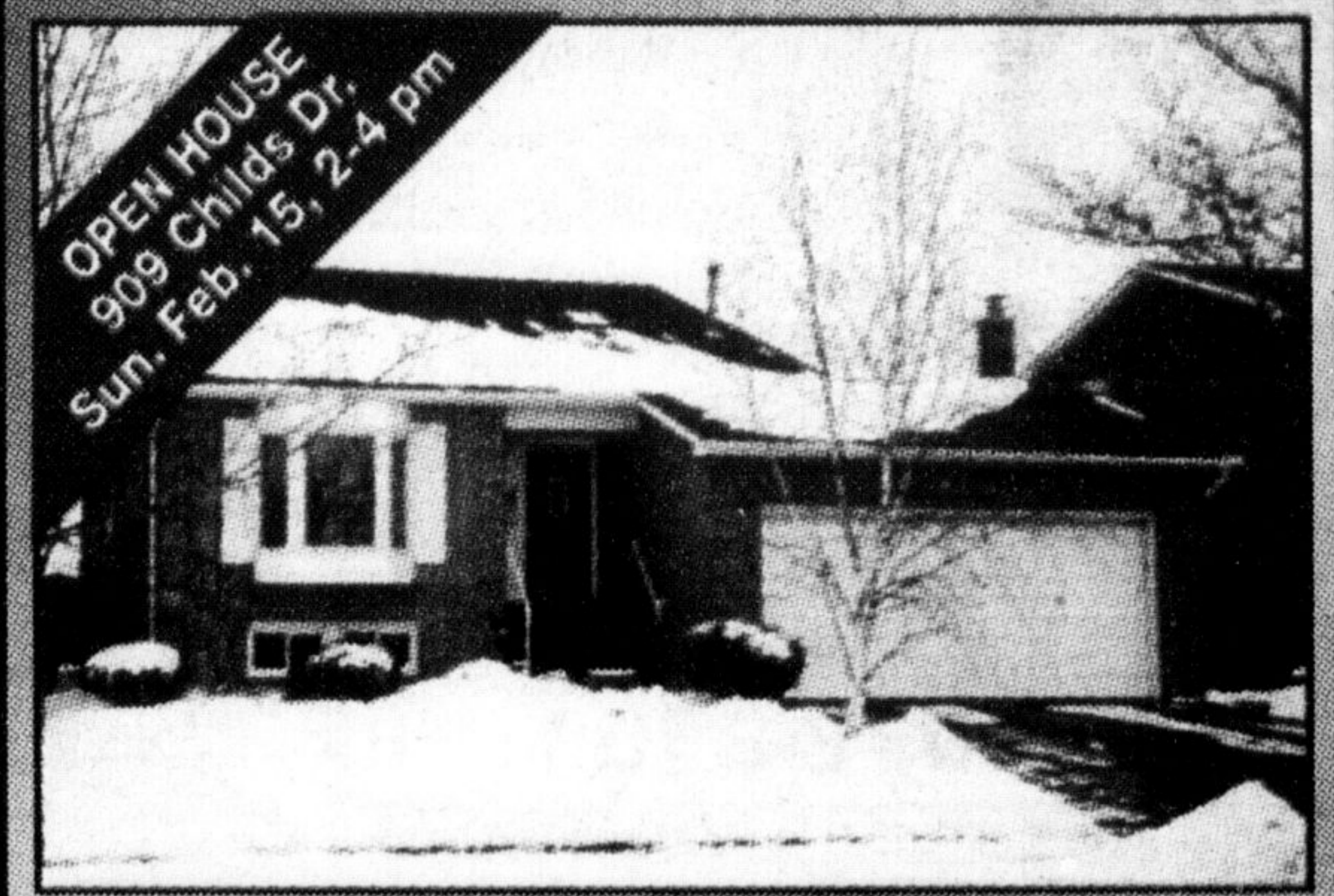
RE/MAX MILTOWNE REALTY CORP.  
CAROLE D. BUDWORTH 878-7777



**\$169,900** RE/MAX®

**TRUCKERS/HOME BUSINESS TAKE NOTE** Well maintained/updated brick home on almost an acre of grounds with fruit trees, small outbuilding, private with bush views. 3 bedroom home, 2 updated bathrooms, eat-in kitchen, new broadloom, paint, roof redone. Hwy 6 exposure with lots of parking, but screened by evergreens.

RE/MAX MILTOWNE REALTY CORP.  
ANNE TAYLOR 854-9833



**\$239,000** ROYAL LEPAGE

**BEAUTIFUL HOME!** Completely renovated: Replaced bathrooms, windows, kitchen, hardwood floors, ceramics, reshingled roof, 150' fenced yard, and much more. You'll be delighted with what you see!

ROYAL LEPAGE REAL ESTATE SERVICES  
VIRGINIA BRAZEAU 878-8101



**\$519,900** ROYAL LEPAGE

**10 ACRES** A long private lane through the woods leads to a sunny secluded setting for this spectacular home, custom-built w/utmost quality in 1990, approx. 5700 sq. ft. of luxury living from the impressive foyer w/balcony overlooking the 2-storey great room to the gourmet kit. w/greenhouse breakfast room. It's truly worth your viewing.

ROYAL LEPAGE REAL ESTATE SERVICES LIMITED  
VIRGINIA BRAZEAU 878-8101



**\$850,000** Johnson Associates  
HALTON LTD. REALTOR

**HOBBY FARM** Excellent for commuters - 5 mins. to 401; 30 min. to airport. Numerous golf courses, cross-country and downhill skiing, hiking the Bruce Trail. Great value in this 50 acre property; 5 stall barn, tennis court, gorgeous well-maintained home with forced air gas & heating, super location. For viewing call.

JOHNSON ASSOCIATES HALTON LTD., REALTOR  
DONNA ROBBINS 877-5165



**\$247,500** RE/MAX®

**AN INVESTMENT INCOME** In-town opportunity. Solid brick home on a double lot. Might be able to sever off a separate lot and make some money, or build a new dream home. Call for details.

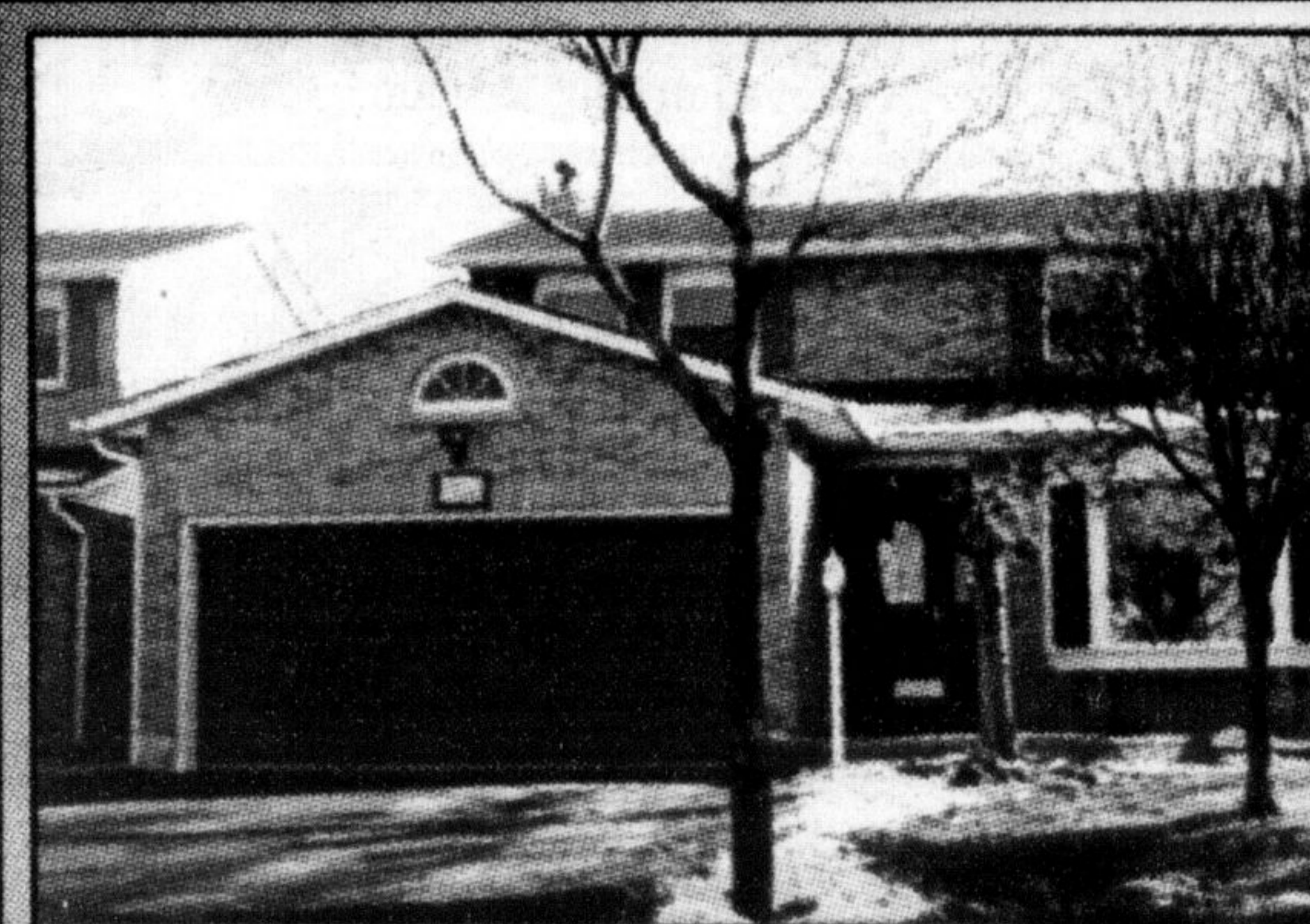
RE/MAX MILTOWNE REALTY CORP.  
GLEN OR GARY THOMAS 878-7777



**\$191,900** RE/MAX®

**ARE YOU READY** ...to move into this well maintained home? Large lot size, fireplace in the living room, extremely large recreation room, close to all amenities. Call Ron today for your personal viewing.

RE/MAX MILTOWNE REALTY CORP.  
RON FURIK 878-7777



**\$258,900** RE/MAX®

**JUST IMAGINE** Living in this fine brick home with four bedrooms, four bathrooms, oak flooring in the living room, dining room and family room. Upgraded trim, french doors, and a fireplace also compliment these rooms. Enjoy the bright eat-in kitchen with pine wainscoting and walk-out to deck. Located on a quiet family street.

RE/MAX MILTOWNE REALTY CORP.  
MOE MILJOUR 878-7777



**\$347,000** ROYAL LEPAGE

**PARKLIKE SETTING** Spacious family home, approx. 3000 sq. ft. home on a gorgeous 10 acre property. Features bright, upgraded kitchen with ceramic floors and built-in-barbecue, main floor family room with fireplace and walkout to patio, large office, 4 generous bedrooms, 2-1/2 baths and numerous extras.

ROYAL LEPAGE REAL ESTATE SERVICES LIMITED  
BILL MARSHALL 878-9100