

# Main Street Realty - Realtor

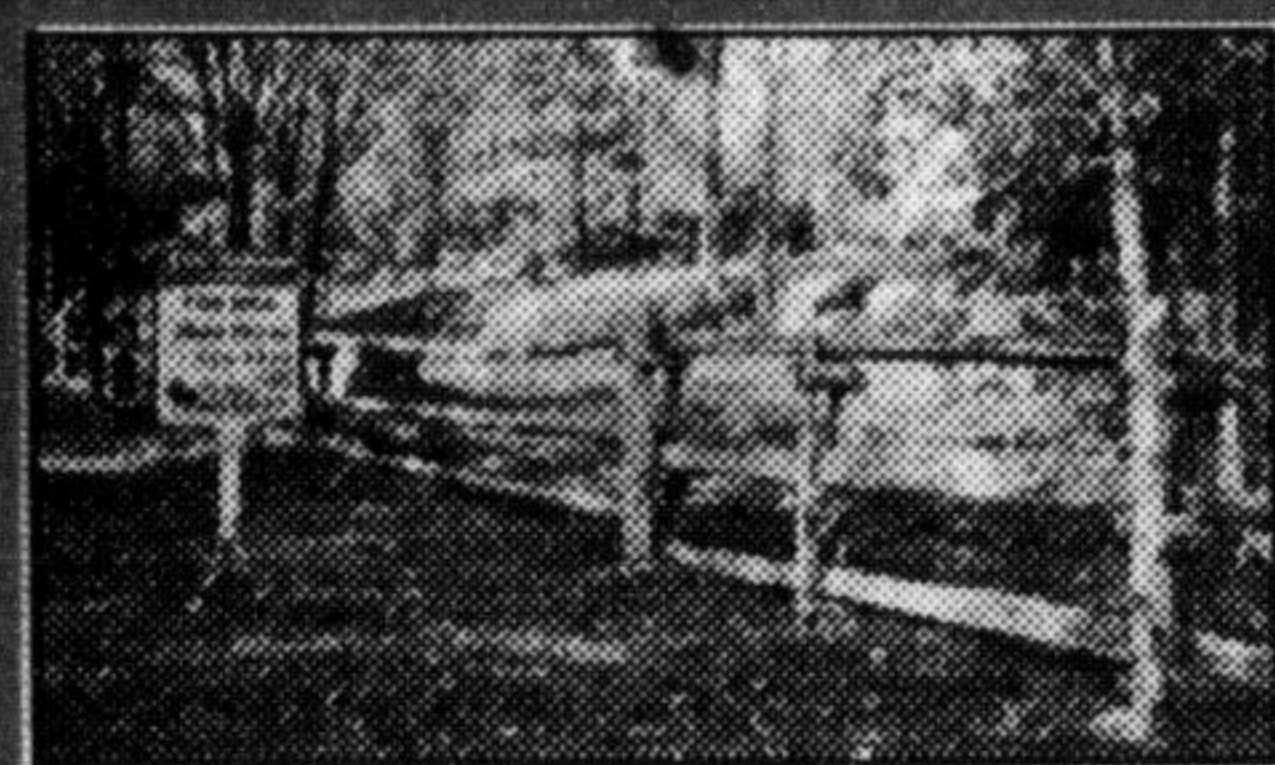
# Better Homes and Gardens®

Each firm independently owned and operated

**Come see us at - 167 Main St. E., Milton  
Across from Knox Presbyterian Church**



**AUDREY NEWELL**  
Broker



**BUILDING LOT**

1.8 Acres mostly cleared, 5th Line Nassagaweya, new well and survey \$139,900. Please call Tim Dobson for details.



**NEW PRICE!!**

3+ Bedroom family home with inground pool. Huge Rec Room. Cathedral ceilings, skylights, woodburning stove and more.



**SAM NADALIN**  
Associate Broker



**WAYNE CARSON**  
Sales Representative



**BOARD & BATTEN FARM HOUSE**

Offering 4 bedrooms and 2 baths, with a view in all directions. 83 acre corner farm with a bank barn with hydro and water. Asking \$369,000. Make your dream come true. Please call Audrey.

**I HAVE CUSTOMERS FOR YOUR HOME:**

- **IN THE COUNTRYSIDE.** Up to \$300,000. Custom design preferred, 2-4 acres, lots of trees and privacy.
  - **IN MILTON.** An updated Townhouse, 3+ bedrooms with a basement level and garage
  - **IN MILTON OR GEORGETOWN.** A 3+ bedroom split with upgrades, around \$200,000
- ARE YOU SELLING? CALL COLLIN STEWART**



**LES HINKER**  
Sales Representative



**COLLIN STEWART**  
Sales Representative



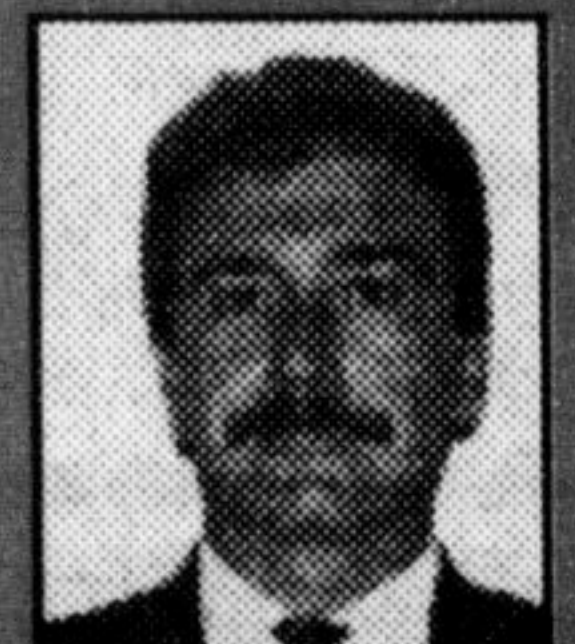
**VENDOR SAYS:**

"Bring us an offer!" Great location, huge side yard, shade in backyard. New Price \$122,500.



**HAS ALL THE "I WANTS"**

4 bdrms., 3 washrooms, eat-in kit, with w/o, formal L.R., D.P., finished rec room, F.P., finished pool & beautiful lot. Asking at \$264,900. For list of upgrades call Bill Currie 878-4944.



**RON THISS**  
Sales Representative



**ROSS CESCON**  
Sales Representative



**\$162,900.**

602 Roseheath. Easily maintained brick/alum. bungalow with single garage. Close to schools, recreation and shopping. Also has 2 + 2 bedrooms, 2 baths., woodstove and central air. Please call Doug Butson for details.

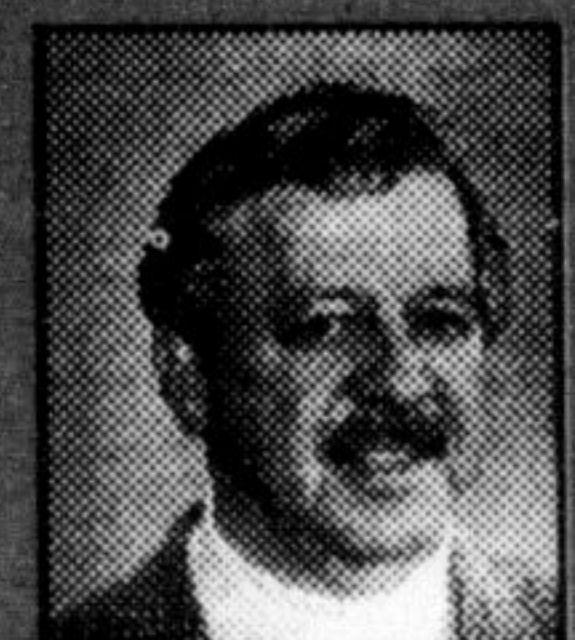


**SPECTACULAR VIEW**

4 bdrms., 5 washrooms, eat-in kit., overlooks D.R., L.R. with F.P. Main floor F.R., den, office, indoor pool, central A/C, numerous w/o's, attached & detached garage, plus guest cabin. All this on 27 escarpment acres with spectacular view. Offered at \$699,000. Contact Bill Currie at 878-4944.



**CHRIS NEWELL**  
Sales Representative  
CHES (M) CEI



**DOUG BUTSON**  
Sales Representative



**THIS ONE'S A BEAUTY!**

50oz. Carpet, hardwood floors, wet bar in rec. room, front & rear decks, heated garage. Call Chris today!



**DORSET PARK**

Brick bungalow offering 3 bdrms., 2 washrooms, large living room, combo. kitchen & dining rm., huge lower level and a quick possession. Asking \$181,900. Call Bill Currie 878-4944.



**TIM DOBSON**  
Sales Representative



**BILL CURRIE**  
Sales Representative



**A MUST TO SEE**

Located near park land, this immaculate bungalow offers 3 bdrms., spacious dining room, formal living room upgraded kitchen & bathroom, huge rec room with wet bar, inground pool and nice lot. Asking \$189,900. Call Bill Currie 878-4944.



**PRICED TO SELL**

2 storey, 3 br., 2 baths, full basement. To view please call Sam Nadalin.

**WE HAVE SOLD MANY COUNTRY PROPERTIES-  
WE HAVE MORE PURCHASERS-  
MAY WE SELL YOUR PROPERTY?  
PLEASE CALL CHRIS OR AUDREY NEWELL**

Sales Rep. **905-878-4444** Broker

**chris@new-all.com**

**www.new-all.com**

**NEW**

**Buyer & Seller FAQ's  
Expanded Sales Data  
Condominium Section**



Call Us First  
or  
Call Us Last  
YOU OWE IT TO  
YOURSELF TO  
CALL US!

**878-4444**

**1-800-668-3268**

## Best Homes

Your Milton Real Estate Marketplace

### Countrywide Town Centre Realty Inc.

MILTON 878-9100  
OAKVILLE 338-6550



**Ed & Norma  
Proveau**

Sales  
Representatives



Lovely English Tudor on 5 AC of hardwood forest. 12 rooms, excellent layout for nanny or inlaw suite or bed & breakfast. Only 10 min. from 401. Call Ed or Norma Proveau. \$368,000.



Close to town & 401 at Sixth Line. 5 bedrooms over 3400 sq. ft. on three acres. Call Ed or Norma Proveau. \$299,000.



4 bedroom backsplitt, family room and sun room addition overlooking pool. Large pie shaped lot. Call Ed or Norma Proveau. \$195,900.



Immac. Georgian style on 36 acres, approx. 1/3 wooded, the balance is a private park surrounding the home w/gardens, ponds & trees plus an 1800 sq. ft. outbuilding, convenient to 401 & Milton. Call to drive by or view. \$499,000.

## Millwood raises amenities for first-time buyers

Moving vans and families are filling the streets of Sunfield and Lormel Homes' Millwood development in Burlington. With Phase I of construction nearing completed, new residents are proudly calling Millwood their new home.

Those looking for entry-level prices with a high level of amenities and features quickly saw the value in Millwood's townhomes and semis. Semis featuring cathedral ceilings, curving staircases with oak handrails and spindles, open-concept design, two-storey entries, decorative columns and an all-encompassing great room layout offer all of the features of detached living, but at an even more affordable price.

Those interested in experiencing Millwood can become neighbours to new residents as early as this summer.

To obtain more information and review the variety of floor plans and features available, the site office is located on the southeast corner of Appleby Line and Upper Middle road. Hours are 1 to 8 pm from Monday to Thursday, and weekends and holidays from 11 am to 6 pm. Sales representatives Faith Taylor and Paul Rietta can be reached at the sales office at 905/319-8680 during these hours. They welcome your visits and your calls.



To advertise,  
call  
**Andrea Boyle**  
at  
**878-2341**

## FOREST CREEK

# 18 Exclusive Country Homesites

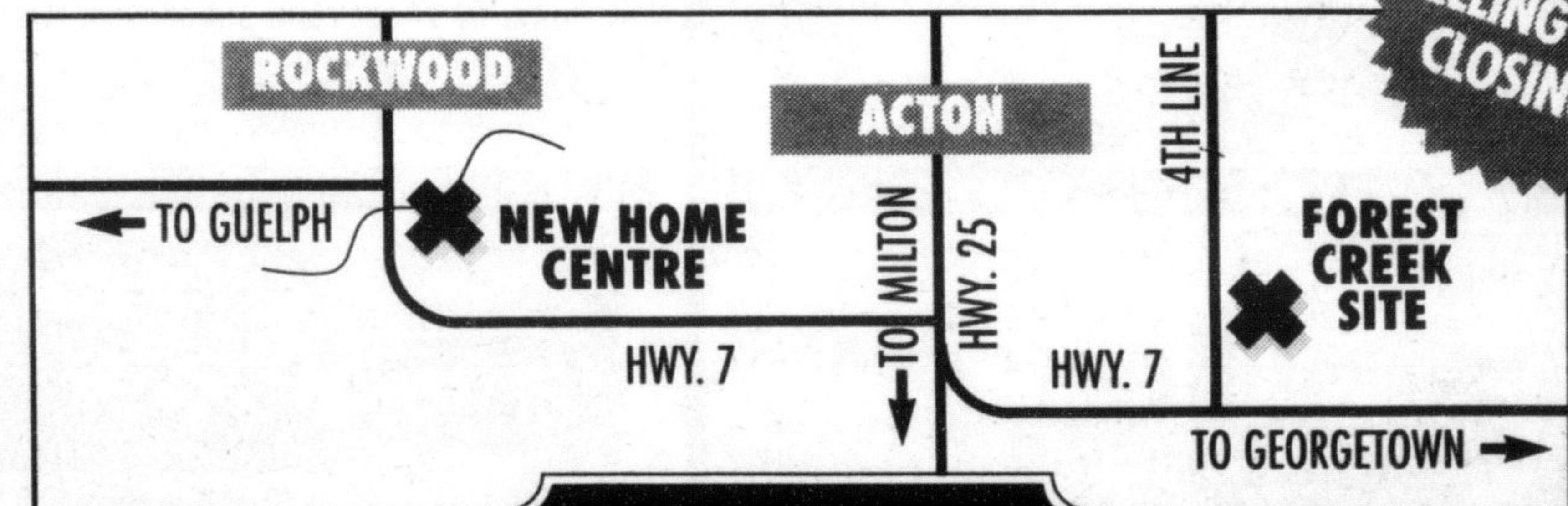
CUSTOM  
HOMES ON  
1.5 TO 5.5  
ACRES



1.4 km North of Hwy. 7 on the 4th Line of Halton Hills.  
Just East of Acton

New Home Centre in Rockwood-Hwy. 7 & Cobblestone Place  
Tues.-Thurs. 11 am to 8 pm, Sat & Sun. 11 am to 5 pm

519-856-4389



NOW  
SELLING AUG.  
CLOSINGS

**Charleston  
HOMES**