



# OUR READERS WRITE

THE CANADIAN CHAMPION

## Homemaking editorial right on

Dear Editor:

Your editorial of January 6 — 'Our elderly deserve to be treated better' — has, I am sure, struck many responsive chords throughout this community. Congratulations on the accuracy of your assessment and thank you for your advocacy on behalf of our elderly citizens, who need the services provided through home health care services to maintain their independence and continue to enjoy the familiar surroundings of their own homes.

I also appreciate your support of the homemaking personnel, who benefit their clients in ways that cannot be measured in terms of hours, dollars and cents.

You might be interested in knowing that home care in conjunction with the Halton Regional Health Department is contemplated.

## Proud of the property

Dear Editor:

The Domus Foundation, located at 551 Commercial Street in Milton, is a private non-profit organization which consists of 110 three and four-bedroom townhomes. Our mandate is to provide affordable family housing.

There seems to be a misconception in the Milton area that these homes are 'Ontario Housing' and that anyone who lives there must be receiving government assistance (i.e. welfare). The board of directors would like to clarify this.

Domus does receive some subsidy income from the federal government. The organization has been in business for approximately 20 years. Of the 110 families on our site, there are some who do require assistance in the form of a rent subsidy. The balance of our residents are families who pay the full market value rent. This rental amount is set by the federal government based on the rents for similar homes in the area.

The board is constantly upgrading the units themselves, both interior and exterior, to blend with similar housing in the area. We are proud of our property.

The Board of Directors,  
Domus Foundation  
551 Commercial St., Milton

ing adopting the U.S.- based program P.A.C.E., which basically involves daily transportation of the elderly and frail to and from a central location, where personal care and meals are provided.

Considering the number of seniors who live alone with family not available, has any consideration been given to the problem of preparing these folk for the daily rides in all kinds of weather? Is there a comfortable facility for a nap at this location? What about the rural community? I really think that Halton is the place for such a program. This might work in an acute situation in a high-density population centre.

Let's hope that the young people who are now planning our elder care take a second look at what they are about to implement in the interest of economy.

Audrey Cairns  
Milton

## Thanks for the help, businesses

Dear Editor:

The Heart Health and Cancer Prevention Program of the Halton Regional Health Department recently held a campaign to encourage women over the age of 50 to talk to their doctors about having a mammogram.

We would like to thank the following businesses and workplaces for their participation and support of this initiative: Cleo/Ricki's, Green Ginger, Heady's Haircutting, Jo'Leen's, salon Group, Total Skin and Body Care Clinic, Karmax Heavy Stamping.

Thanks again. We couldn't have done it without you.

Halton Regional Health Department

Ford of Canada captures truck leadership for the second year in a row.

Ford F-Series has been Canada's best-selling line of trucks for 30 years.

After 50 years, Ford F-Series still counts only one other truck in North America is so successful. It's been the preferred full-size pick

Ever since F-Series picked off the line, they've been invincible spirit trucks.

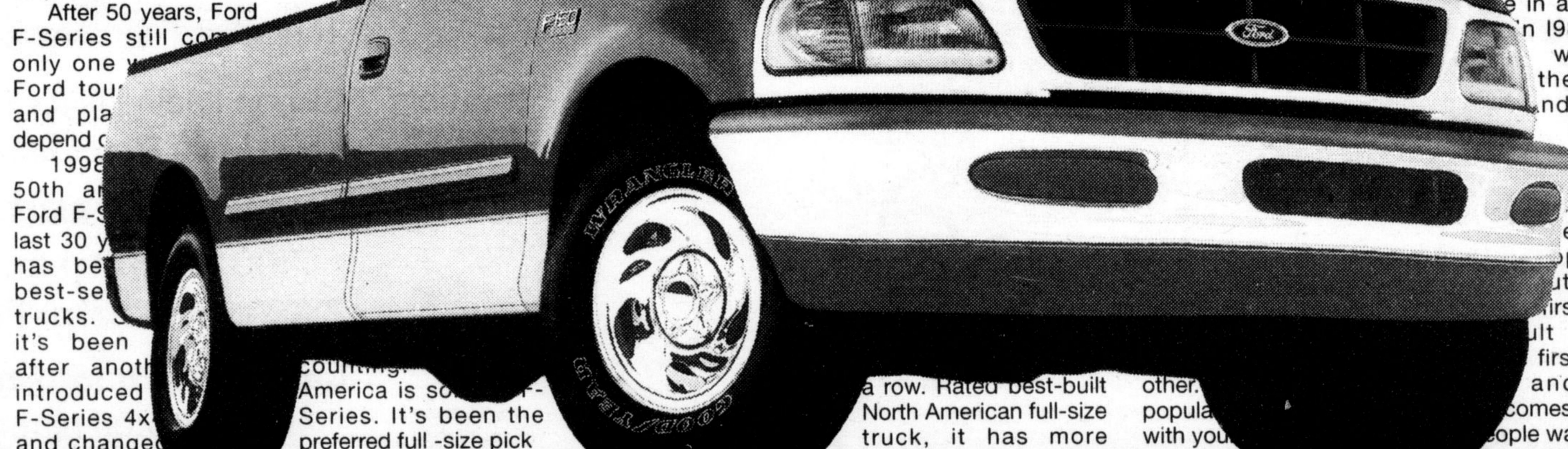
repeat buyers than any other. Everything but its popularity has changed with your needs.

Ever since the first Ford F-Series rolled

the way North America looks at trucks.

In 1965, Ford introduced the Twin I-Beam Suspension on the F-100. F-150 has the most powerful standard V6 engine in a full-size truck. In 1987, Ford was the scene of the standard rear braking stand-ab third first.

These years, popularity still putting you first priority. Result of that first in popularity and sales comes to trucks people want.



'98 Ford F-Series XLT



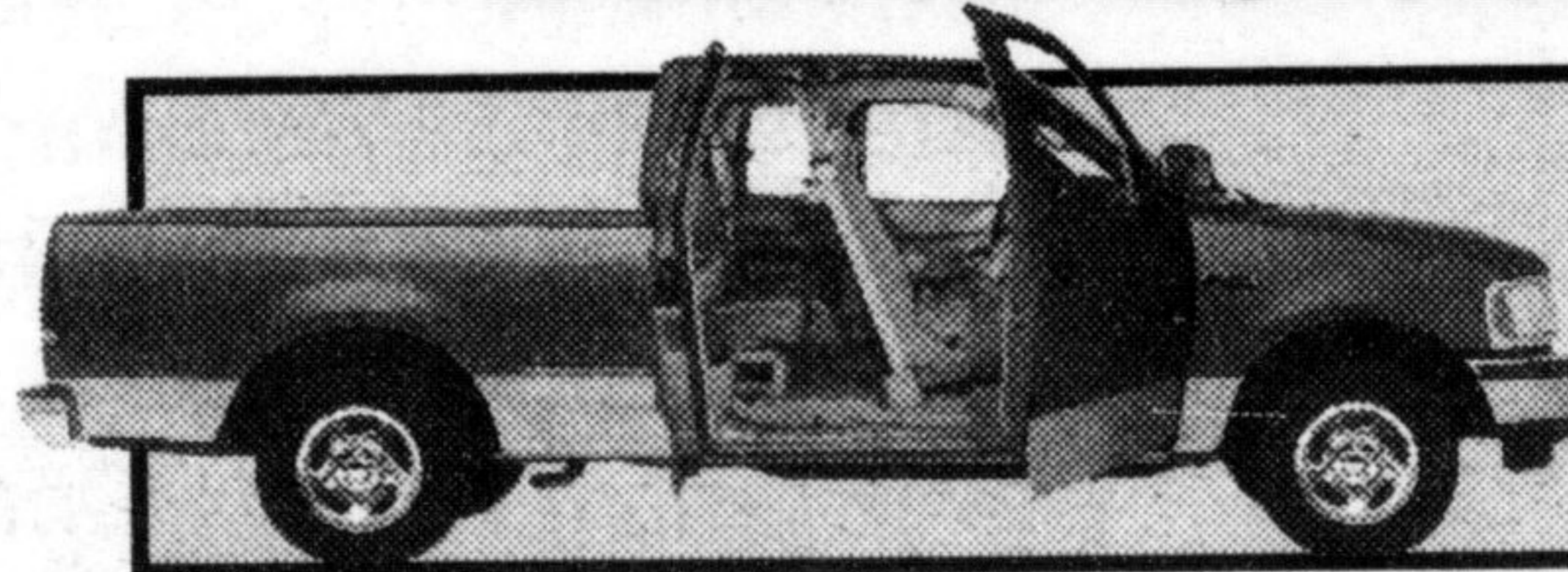
**You have to be tough to stay on top.**  
F-Series is Canada's #1 Selling Truck 30 Years Running.\*\*

Only Ford could give you a truck this complete:

- Air Conditioning
- AM/FM Stereo
- Cassette
- Speed Control
- Tilt Steering
- The Most Powerful Standard Engine In Its Class
- Automatic Transmission
- Polished Aluminum Wheels
- Lower Two-Tone
- Power Locks, Windows & Mirrors

**\$299\*** 24 Month Lease  
\$3,395 Downpayment

Or make one single payment of \$9,425 and drive for 24 months†



or choose F-Series Supercab XLT for **\$49 More per Month**

MORE POWER, MORE ROOM THAN CHEVY & DODGE!

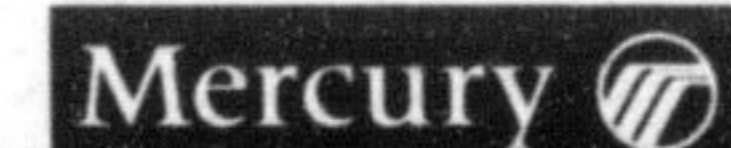
VEHICLE	'98 F-150 XLT	CHEVY C/K 1500	DODGE RAM
HORSEPOWER	205 @ 4750 RPM	200 @ 4400 RPM	175 @ 4800 RPM
TORQUE (lb.ft.)	260 @ 3000 RPM	255 @ 2800 RPM	230 @ 3200 RPM
CARGO BED SPACE	72.8	69.8	70.3

CHOOSE THE LEASE PAYMENT THAT'S RIGHT FOR YOU.

Downpayment or Equivalent Trade	F-Series XLT Regular Cab	F-Series XLT Supercab
\$3,395	\$299	\$348
\$1,500	\$383	\$432
\$ 0	\$450	\$499

**Get The Complete Truck Now**

**At Your Ontario Ford & Mercury Dealers**



Or visit our web site at: [www.ford.ca/offers/](http://www.ford.ca/offers/)

**SHARON PRESSÉ**  
R.N., LLB

Barrister & Solicitor

Suite 301  
205 Main Street East  
Milton

**876-4656**

FAMILY LAW &  
DIVORCE

**COUNTRY  
RAD SERVICE**

• Radiator & Fuel Tank Repairs

• Aluminum Welding  
• Silver Soldering

400 MOROBEL DR., UNIT 4,  
MILTON, ON. L9T 4N6

**•878-5924**

WISE BUYERS READ THE LEGAL COPY. \*New 1998 F-Series XLT Regular Cab/Supercab with P.E.P. 810A with two-tone paint scheme, monthly lease payment of \$299/\$348 based on 24 month lease from Ford Credit to qualified retail lessees, on approved credit. Some conditions and a mileage restriction of 36,000 km over two years apply. \$3,395 downpayment or equivalent trade required. †24 month lease available to qualified retail lessees, on approved credit. Total lease payment due at inception of the lease. Some conditions and a mileage restriction of 36,000 km over two years apply. Security deposit required. All offers exclude freight (\$920), license, insurance and all applicable taxes. Dealer may lease for less. Limited time offer. Offers may change without notice. See dealer for details. \*\*MMVA reporting Ontario FMVA, P.O. Box 2000, Oakville, Ontario L6J 5E4