

B Burlington Chamber of Commerce presents...

FINANCIAL '98 FOCUS

Friday, January 16, 10 a.m. - 9 p.m.
Saturday, January 17, 10 a.m. - 5 p.m.

Burlington Holiday Inn, 3063 South Service Road

30 EXHIBITORS

Talk to representatives of mutual fund companies and financial institutions, and local financial planners. Get the latest information on successful retirement planning

20 SEMINARS free with admission

Tips on maximizing your retirement income through tax planning, mutual funds, bond markets, etc.

Plus Five Feature Presentations

Friday, Jan. 16

12:45 p.m.
How to avoid outliving your money



Dr. Moshe Arye Milevsky
Professor, Schulich School of Business, York University

Friday, Jan. 16



Burl. Estate & Fin. Planning Council
• Rick Goldring, certified financial planner
• Gord McNiven, chartered accountant
• Don Smith, funeral director
• Paul Charlebois, lawyer
• Jamie Edwards, realtor

Friday, Jan. 16

7:00 p.m.
Why is it Different This Time?



Dunnery Best
• Capital market analyst
• Director of private client investing, Midland Walwyn
• Globe & Mail columnist

Saturday, Jan. 17

12:45 p.m.
Pick & Pair-winning mutual funds



Duff Young
• Leading mutual fund analyst
• Best-selling author of "Top Funds"

Saturday, Jan. 17

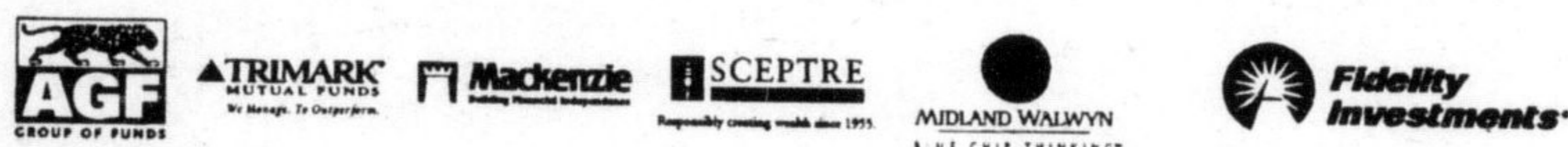
2:30 p.m.
Where do we go from here?



Patricia A. Croft
• Vice President, Scapto Investment Council Inc.
• Portfolio manager, focusing on global asset mix and long-term trends

FINANCIAL '98 FOCUS CLIP THIS COUPON & **SAVE \$5!**
 Friday, Jan. 16-10 a.m. - 9 p.m.
 Saturday, Jan. 17 - 10 a.m. - 5 p.m.
 Burlington Holiday Inn
 Regular admission \$5 per person
 Admission free with this coupon!
INCLUDES GUEST SPEAKERS AND 20 FREE SEMINARS

Proud Sponsors of Financial Focus 1998:



HALTON CATHOLIC DISTRICT SCHOOL BOARD

NOTICE TO PARENTS OF GRADE 8 STUDENTS

INFORMATION SESSIONS AT CATHOLIC SECONDARY SCHOOLS

Halton Catholic secondary schools, in partnership with home and church, are dedicated to providing excellence in education by developing Faith-centred individuals able to contribute to society.

Parents and students are invited to attend information sessions regarding programs and services offered in Halton's Catholic secondary schools.

Please call the School Principal for further information.

AN INFORMATION SESSION WILL BE HELD AS LISTED BELOW:

MILTON/HALTON HILLS

Bishop Reding Catholic Secondary School

1600 Main Street East, MILTON

Principal: Mr. Onning Pilibossian

Telephone: 875-0124

Date: Thursday, Jan. 22, 1998 ~ Time: 7:30 p.m.

James V. Sherlock
Chair of the Board



Fred L. Sweeney
Director of Education

Kerr Realty Management Ltd. 192 Queen Street 876-0407



UNIQUE OPPORTUNITY to lease approximately 10,000 square feet located centrally in Milton (Carriage Square). The former Town Hall is available for lease in mid-January. Possibilities for uses are numerous. Call Jim or Lorraine Kerr. Kerr Realty Management Ltd. (905) 876-0407.



RETAIL SPACE located at Carriage Square. Main floor retail available for 565 square feet. Asking \$8.50 minimum rent. Second floor office available from 182 square ft. (\$250 per month). Call Jim or Lorraine Kerr. Kerr Realty Management Ltd. (905) 876-0407.

876-0407

Commercial • Industrial • Residential • Condominium

CHRISTIE & WOODS REAL ESTATE LTD.



NEW PRICE \$159,900

3 bedroom brick, 1 1/2 storey. Separate living and dining room w/ fireplace. Recent windows and roof. Call Yvonne at (905) 878-2095.

Yvonne Christie - Broker/Owner
878-2095 *Sales Rep.
Allan Christie* 878-2095



If you're thinking of buying or selling call **JOYCE SCOTT**

- 19 years in Milton Real Estate
- Vice President of Independent Real Estate Brokers Association of Canada
- Member of Oakville, Milton & District Real Estate Board

NOW IS THE TIME TO LIST AND SELL!

Make Your First Choice Joyce... The name behind the business.



JOYCE SCOTT
BROKER-OWNER
878-1526

JSR JOYCE SCOTT REAL ESTATE INC.

In Milton since 1979 Independent Real Estate Brokers Association



RE/MAX MILTOWNE REALTY CORP.

22 Ontario St. S. 878-7777 e-mail: miltowne@globalserve.on.ca



GLADYS CRANFORD
Associate Broker

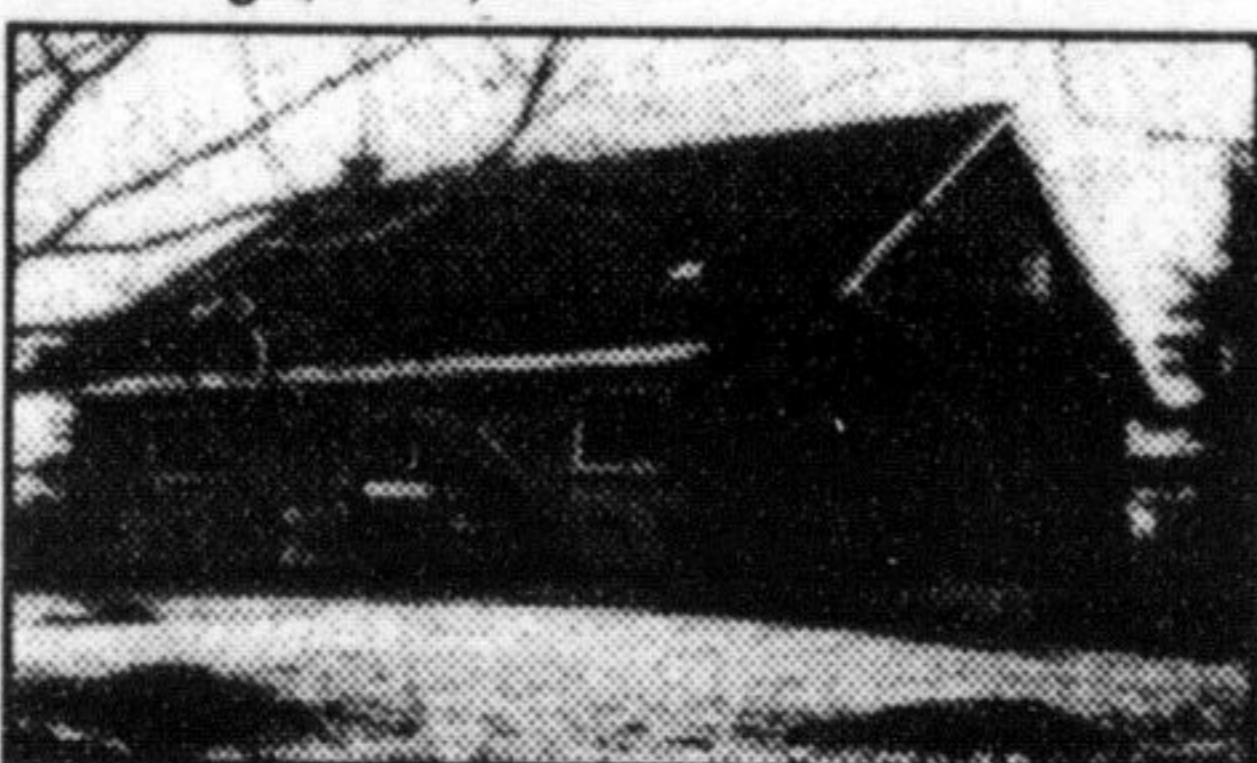
878-7777

Res.: 875-3039



Bi-Level Beauty

High quality 4 year old bungalow, 1850 sq. ft. on upper level. Almost one acre, stunning lake view from deck, private open plan, spacious, walk out lower level, maple kitchen. 5 minutes to 401, Puslinch. One of a kind! Asking \$259,900.



Brick 1 1/2 Storey

Solid built home on approx. 1 acre with lots of parking. Three bdms, two baths, eat-in kitchen. New roof. Great opportunity for 1st time buyers. Asking \$169,900.



LINDSAY J. McLAREN

Sales Representative
878-7777 Office
(Res.) 854-2451
(Tor. Line) 825-4485

COUNTRY LOT - NATURAL GAS
Located between Milton & Halton Hills this one acre building lot with elevated home site has economical natural gas available and has the well in and all levies paid (except building permit). Build your own home or have quality builder owner build for you. Call Lindsay J. McLaren for further details. Asking\$128,000



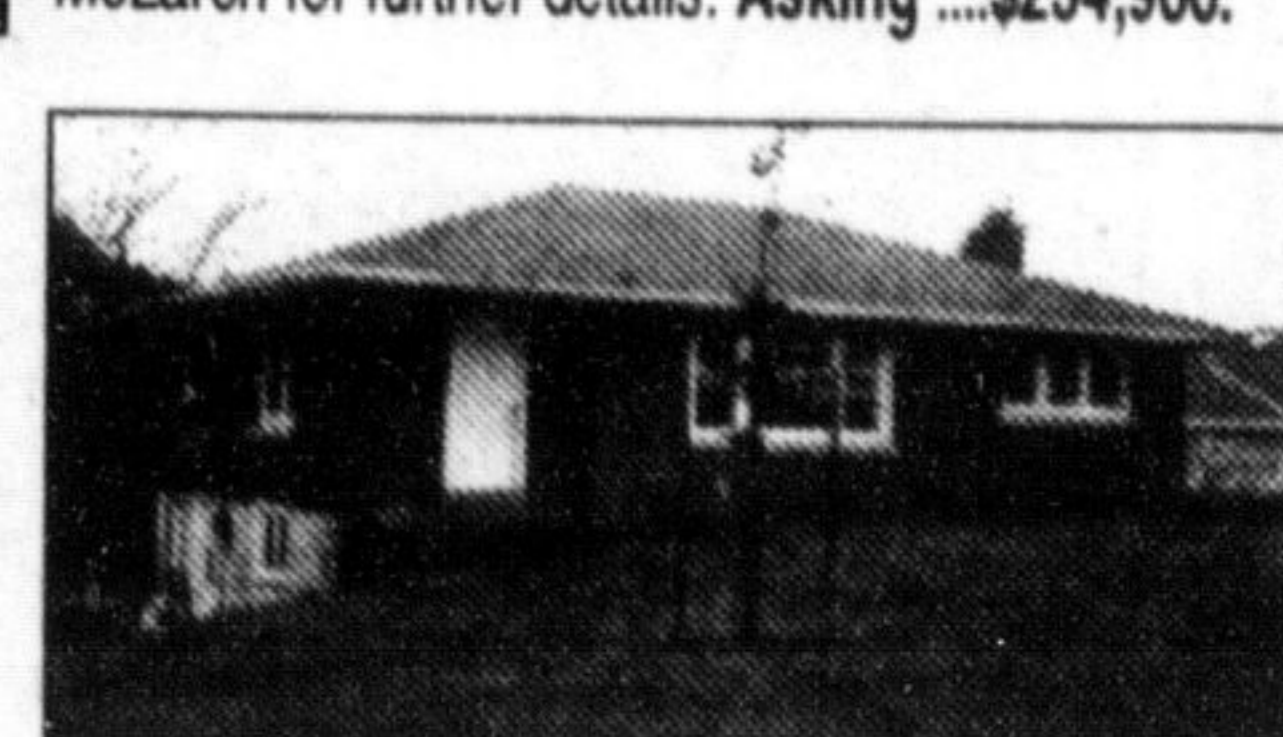
WATERDOWN EXECUTIVE LIFESTYLE

The added value makes it well worth the short drive for this one-year new quality built approx 2365 sq ft 4 bedroom home with separate LR & DR, Hollywood style eat-in kitchen, family room with fireplace, huge MBR with exceptional 5 pc ensuite, upgraded broadloom & hardwood floors, curved staircase and all located on a 50ft lot with a quiet court location. Please call Lindsay J. McLaren for further details. Asking\$234,900.



VILLAGE PARC

Very comfortable and immaculate this 1 bedroom condo with pleasant decor and high panoramic view of Escarpment is perfect for those who desire a maintenance free lifestyle and convenience of close to downtown.
Lindsay J. McLaren Asking \$135,900



ABERFOYLE BUNGALOW

Ideal location for the commuter. This all brick one features 3 + 1 bedrooms, large living room, recently renovated eat-in kitchen, finished rec room with gas fireplace, games room, recent roof & windows, gas furnace, air conditioning, cable TV available, hardwood & broadloom floors, and w/o basement and all located on scenic 1 acre lot with mature trees along stream. Please call Lindsay J. McLaren for further details. Asking \$192,900.