

MILTOWNE REALTY CORP.
1 IN MILTON REAL ESTATE SALES & TRANSACTIONS

Going Above and Beyond For YOU!
RE/MAX

22 Ontario St. S. 878-7777 e-mail: miltowne@globalserve.on.ca



KEVIN HOWDEN
 Sales Representative

Office878-7777
 Toronto825-4485
 Res.854-2973



NEW LISTING

QUIET COURT LOCATION. Attractive well maintained backsplitted with inground pool in beautiful landscaped yard. Great for entertaining. Features all new windows 96, aluminum eaves & soffits, central air, central vac, ceramic flooring in kitchen & rec room. Don't miss this opportunity. Please call Kevin ... \$204,900.

INDUSTRIAL UNIT

BRONTE ST. LOCATION. Approx. 1600 sq.ft., 10 ft x 12 ft bay door, mezzanine ... \$85,000.



25 YEARS
Above the Crowd®

List with Milton's consistent real estate leader!

RESULTS DO COUNT.



FLORENCE WALTER
 Sales Representative
878-7777



MAKE THE MOVE!

Now is the time to make the move to country living. Secluded 3 bedroom custom brick bungalow on a beautiful 5.8 acres. Only 5 minutes to Hwy 401 in Campbellville. Call me for full details and your appt. to view.



BETTY INGLE R.R.S.
 Sales Representative
 Registered Relocation Specialist
 Office: 878-7777
 Tor. Line: 825-4485

HERE IT IS!



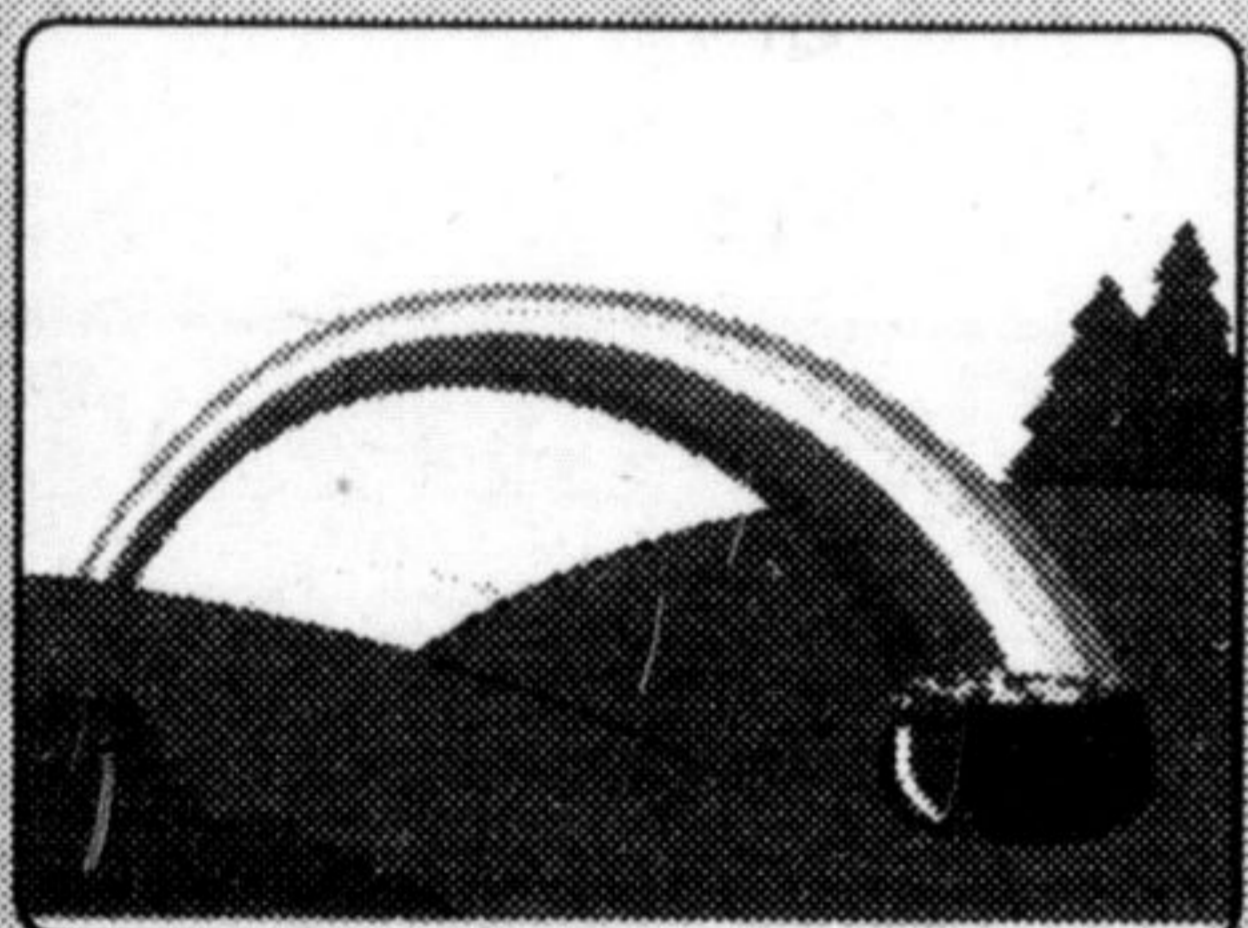
Must be seen to be appreciated. This 4 bedroom home has lots of space to offer, with an eat-in kitchen and walkout to a large lot. For the extended family members we have a fully equipped basement apartment, with wood burning stove. For your appointment today, please call Betty.

E-MAIL MILTOWNE @ GLOBALSERVE.ON.CA LIST WITH A RE/MAX PROFESSIONAL



Glen Thomas
 Associate Broker
878-7777

TIMING IS EVERYTHING!
 This is one of the best times in years to sell your home. Listings are scarce.



Call Glen or Gary for an evaluation today.

IN-TOWN LOT



Incredible in-town lot. Large 4 bedroom executive home with monstrous pie shaped lot. Many upgrades. Well worth viewing. \$247,900.

PALOMINO RANCH



Discover this special subdivision. Lots of interest being generated. 1/2 acre to 1 acre lots. Bungalows & 2 storeys available. Renowned local builders. Call for details.

SCARCE AS HEN'S TEETH



1500 square foot industrial unit. 400 square feet of office. Large drive-in door & mezzanine storage. Only \$77,500

PRIME OFFICE SPACE



Up to 9,000 sq. ft. of Main St. office space. Can be divided to suit, 12 ft. ceilings. Great facility Call for details



Gary Thomas
 Broker/Owner
 Res. 875-3700
878-7777

INTERVIEW ONE OF US BEFORE YOU LIST YOUR HOME! CALL FOR EVALUATION TODAY!

★ LIST WITH SHERYL ★ SELL WITH SHERYL ★ LIST WITH SHERYL ★ SELL WITH SHERYL



SHERYL GRAY

Sales Representative
 Office: 878-7777
 Res. 875-1121
 Tor. Line 825-4485
 Serving Milton Since 1984

FIRM BUYER FOR CHICKEN FARM OPERATION

- Client wants approx. 40,000 sq.ft. building or enough land (approx. 10 acres) to erect
 - Home on property
 - Can close as early as March '98
 - Purchaser very motivated
- Call SHERYL GRAY at 878-7777 if you are thinking of selling.

WANTED HAVE BUYER FOR...

- Bungalow or Split Level
 Timberlea or Bronte
 Meadows Area
- Larger bedrooms
 - Up to \$200,000
 - Flexible closing
- If you are thinking of selling
 Call SHERYL GRAY at 878-7777 for a pressure free no obligation evaluation

TOWNHOUSE JUST LISTED \$136,900⁰⁰

Beautifully decorated, all new broadloom, new kitchen, 5 appliances, finished basement with in-law suite.

Call Sheryl at 878-7777 for further details

★ LIST WITH SHERYL ★ SELL WITH SHERYL ★ LIST WITH SHERYL ★ SELL WITH SHERYL



CLAYTON HACKENBROOK
 Associate Broker
878-7777

PROPERTIES WANTED FOR QUALIFIED PURCHASERS

- Older bungalow in mature Milton, in-law suite is an asset
- 4 or 3 br. home with dble garage, main flr family rm, on Sunnyvale, White, Randall etc.
- Country property on 1+ acres up to \$275,000 within 15 minutes to town
- Executive home in Campbellville over 3500 sq.ft. up to \$500,000
- Older home up to \$190,000 in Kilbride, Carlisle, Waterdown and surrounding areas.

If you're interested in selling any of the above properties, I might be able to help!

LOT FOR SALE

Main St. in Campbellville, hamlet commercial, variety of uses. Good exposure. Asking \$109,900



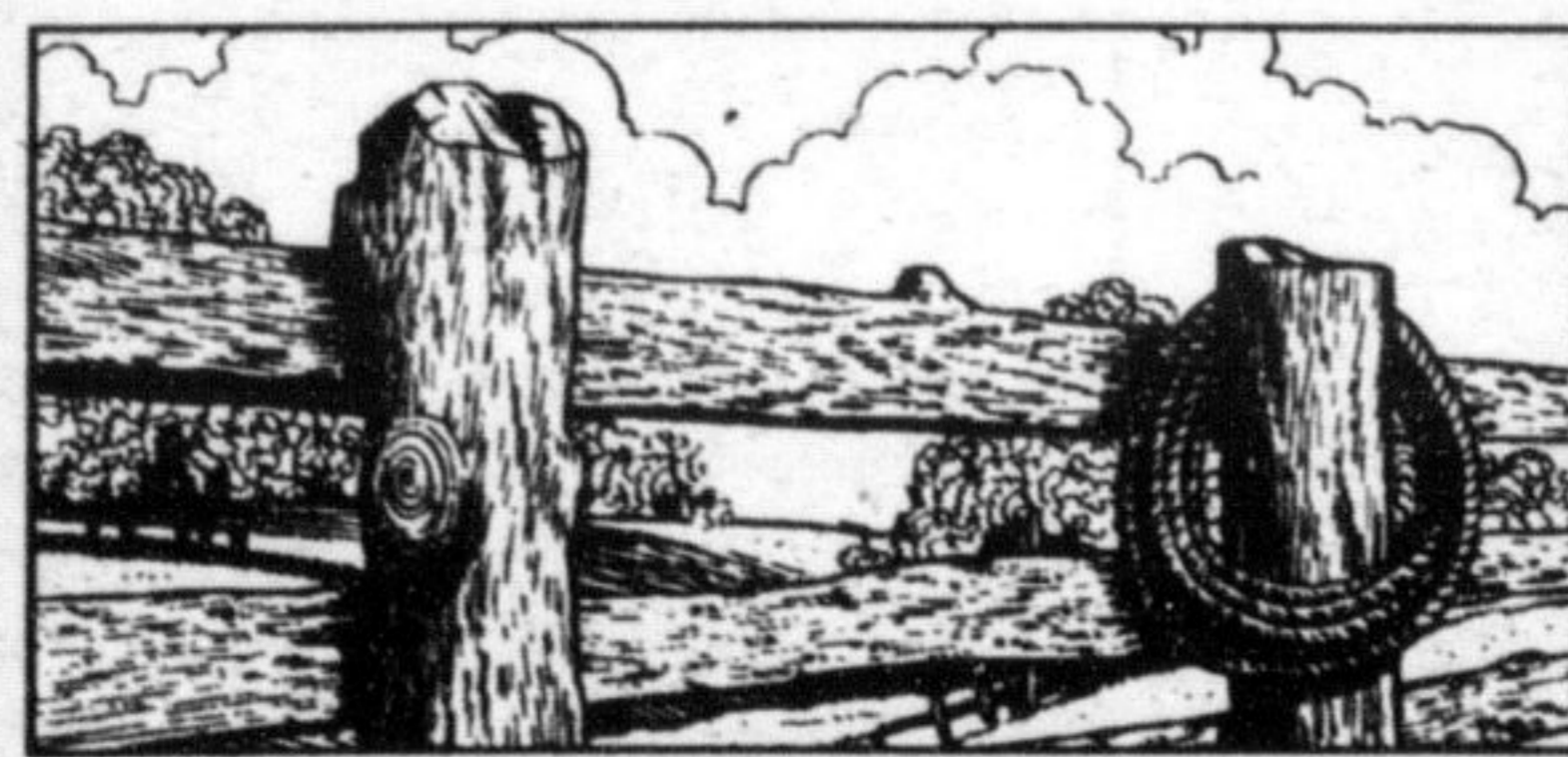
MIKE MORGAN
 Associate Broker

Office: 878-7777

Res.: 878-8093



You'll be amazed when you see how a fabulous renovation has created a home of distinctive quality and design. The gorgeous pine kitchen opens to a spacious living room that's great for entertaining and the unique open concept master bedroom with railing overlooks the main level. Main floor laundry, two washrooms. A huge deck overlooking the countryside and an oversized garage compliment the endless list of upgrades. Don't miss out. Call Mike \$209,900.



Over 3 acres of natural treed setting nestled into the Niagara Escarpment. Picturesque building lot located just north of town. Carve your perfect homesite into the unique natural landscape. Call Mike\$99,900



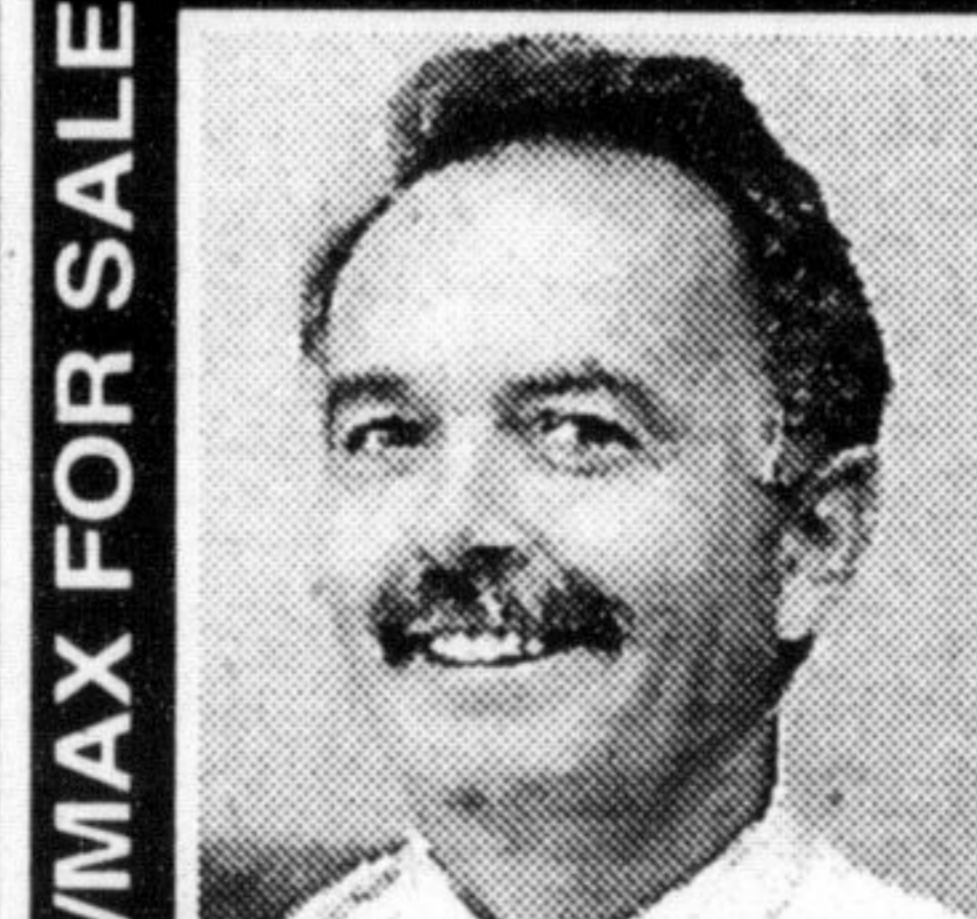
Classic 1850 built two storey, five bedroom home preserved to reflect the era with a Nanny's quarters addition (1989) to total approx. 5,000 sq.ft. The centre hall plan, the high ceilings, wood floors and extensive trim reveal the grace of yesteryear. Located on 1.4 scenic acres between Milton and Oakville.

To view call Mike ... \$393,900

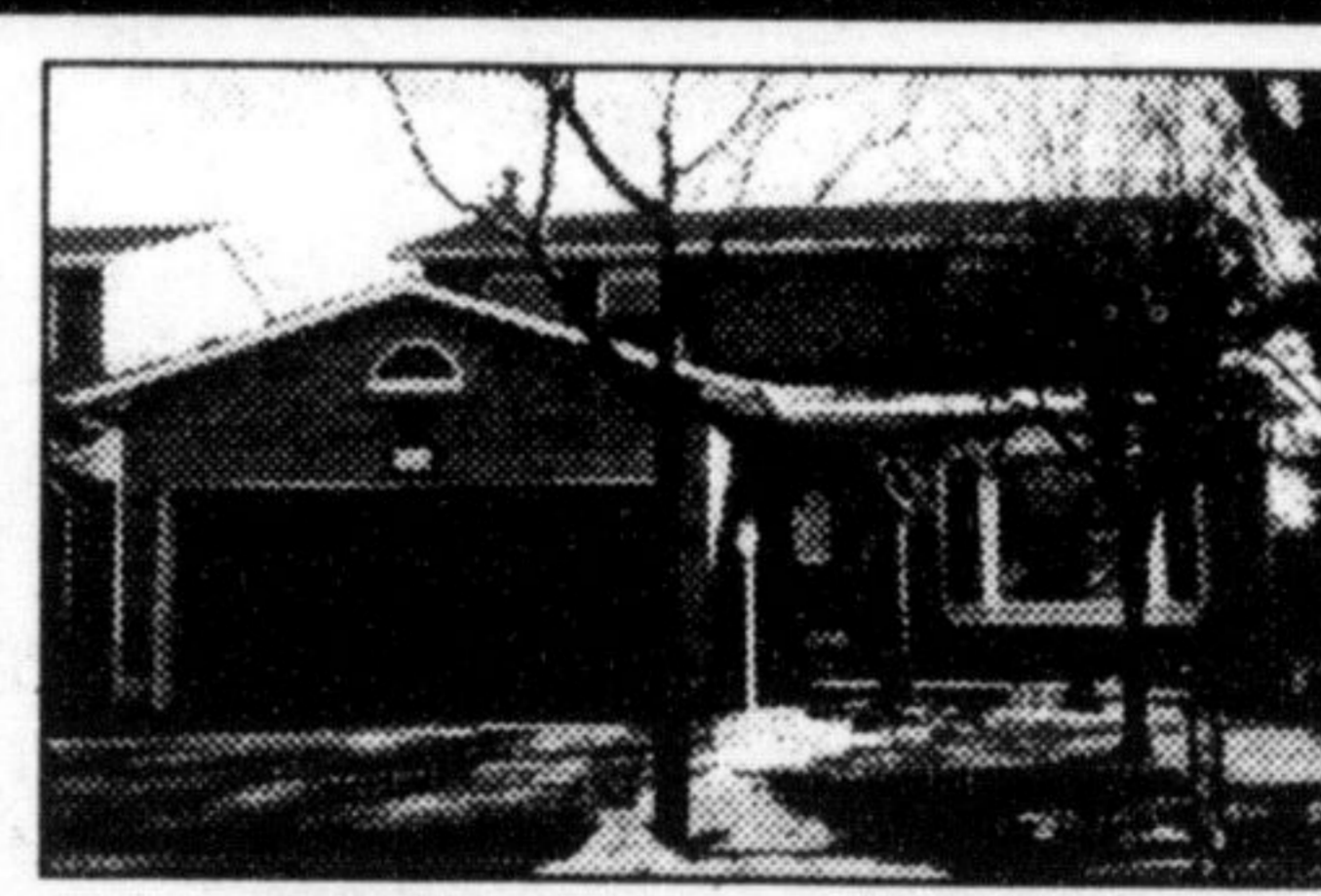


NOW IS THE TIME to make your move to this quiet crescent home. Cozy evenings can be spent by the fire in the main floor family room or in the gorgeous rec room with games area and bar. You'll love the bright spacious kitchen with huge bow window over looking inground pool and private treed yard. All brick and loaded. Don't miss out. Call Mike. \$274,900.

• RE/MAX FOR SALE • RE/MAX FOR SALE • RE/MAX FOR SALE • RE/MAX SOLD •



MOIE MILJOUR
 OFFICE
878-7777
 HOME
876-4577
 Assoc. Broker



BEAUTIFUL HOME

You will be impressed by the formal living and dining rms. with beautiful oak flooring, trench doors, new bay window and molded wainscoting. Enjoy the family rm. with fireplace and oak flooring with walkout to deck. The bright, eat-in kitchen has ceramic tile flooring and has been recently remodeled. This brick home also offers four bedrooms, four bathrooms and central air plus many additional features. \$266,500.



PICK ME

Quick closing possible. A terrific family home with three bedrooms in Timberlea. Features include large living & dining rm. combo, eat-in kitchen with walkout and includes fridge & stove, finished recreation room with brick fireplace, two bathrooms and 4 car parking. \$179,900.

• RE/MAX FOR SALE • RE/MAX FOR SALE • RE/MAX FOR SALE • RE/MAX SOLD •