

Classified

CLASSIFIED HOURS

MONDAY TO FRIDAY
9:00 AM - 5:00 PM

YOUR CLASSIFIED HOTLINE 875-3300



Milestones

SPECIAL OCCASIONS & ANNOUNCEMENTS
IN YOUR COMMUNITY

See Today's Champion for our new "Milestones" section.
To announce your special event, call The Champion's
Classified Department at 875-3300.

Milestones

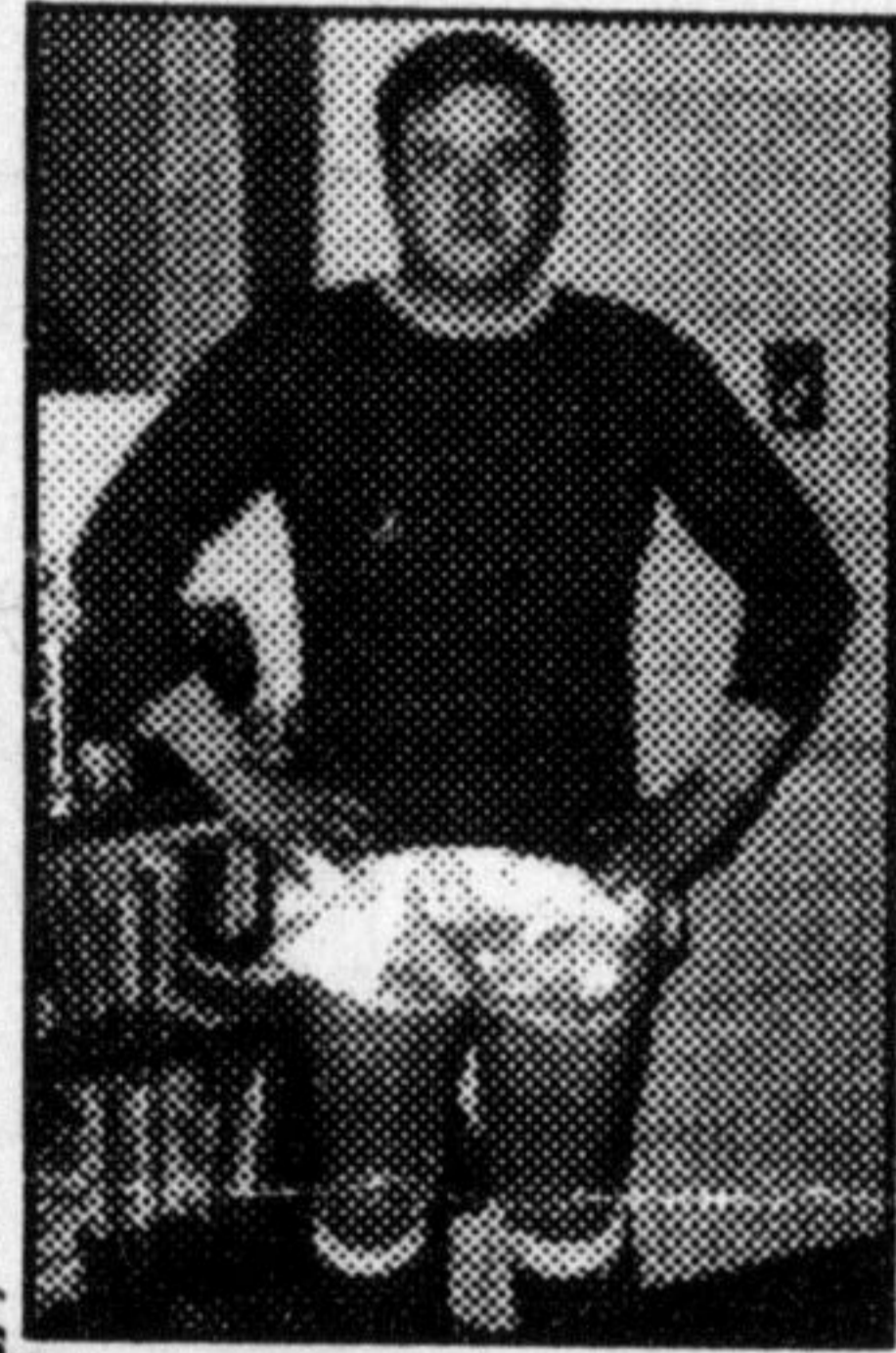
SPECIAL OCCASIONS & ANNOUNCEMENTS IN YOUR COMMUNITY

TO ANNOUNCE YOUR MILESTONE CALL 878-2341

BIRTHDAY

LOOK WHO'S TURNING 5-0!!!

Barry, is that you?



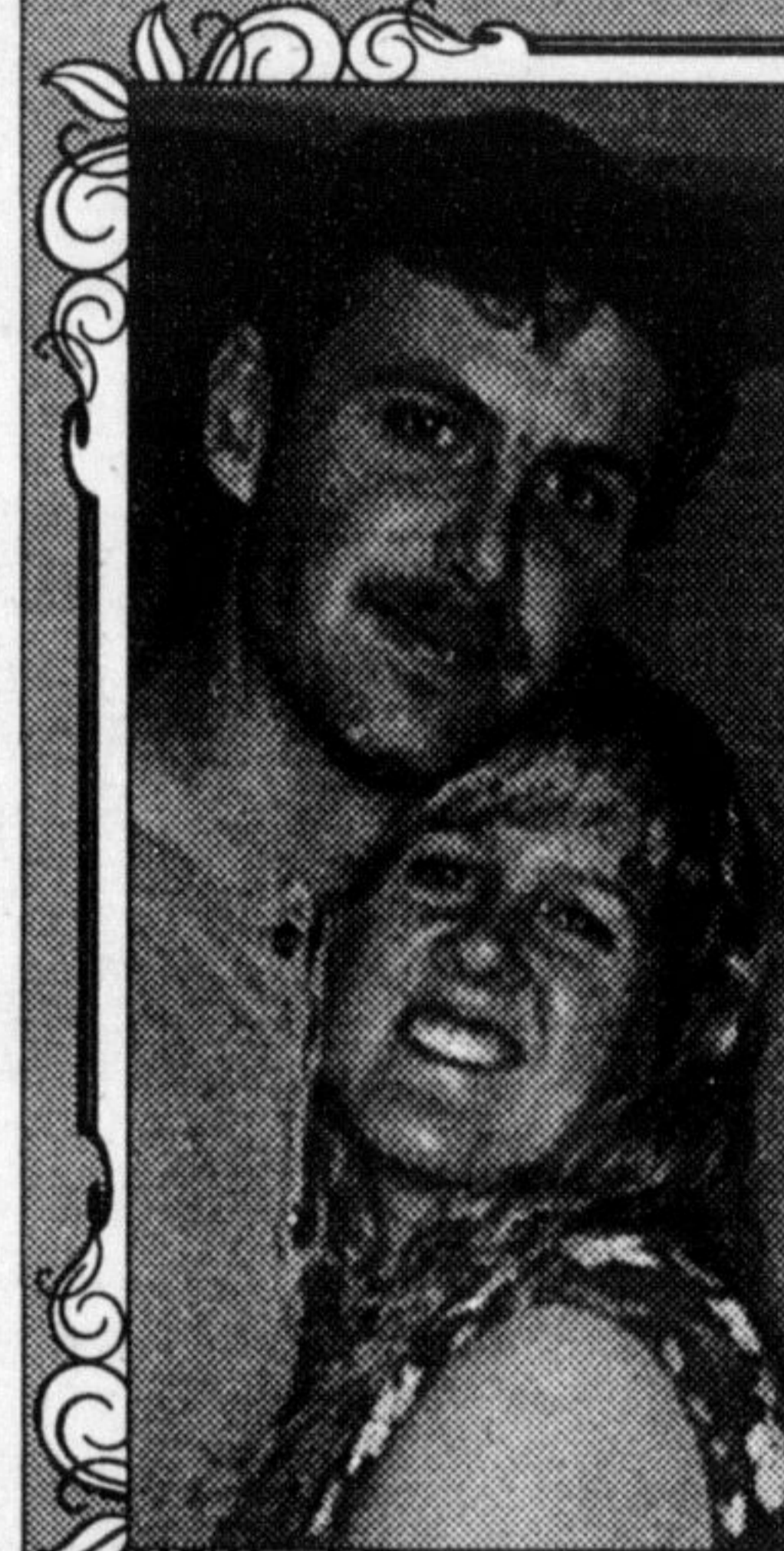
(Nice short shorts)

Happy Birthday!!

Sheffield
Wednesday #1

LOVE FROM EVERYONE

ENGAGEMENT



Alan McKenzie of Milton and Heather Gibson of Kitchener are excited to announce the engagement of their daughter, Jennifer Lynn to Kirk Douglas Marsh, son of Ken and Jean Marsh of Whitby.

Wedding to take place April 4, 1998 in Milton

MARRIAGE



SIMS-DONNELLY "Together"

Parents Don and Shenan Sims of Milton, and Ron and Barbara Donnelly of Oakville shed many joyous tears as their children Trista and Bruce were married on September 20, 1997. The happy celebration was held at the Pillar and Post, Niagara-on-the-Lake.

Following the fun weekend, the jubilant couple honeymooned in Tortola B.V.I. for two weeks.

55 Notices

Season's Greetings

Greet your friends, neighbours and relatives a Merry Christmas and Happy New Year with one holiday greeting in The Champion. Your greeting can be up to 20 words and will only cost \$15.00 + GST. Drop your greeting off at
THE CANADIAN CHAMPION
191 Main St., E.,

52 Holiday Christmas Camps

HORSE Kid's Camp - during Christmas Holidays at Nadean Stables. Full day activities in newly finished arena. Great to keep kid's active. December 22, 23, 29, 30. Pick your day(s). Deposit with reservations. (905) 854-3300.



CHRISTMAS TREES

CUT YOUR OWN Christmas Trees. Tom Manes Farms, Guelph Line South of 25 Side Road. 519-856-9241.

Christmas Trees

FRESH CUT
SCOTCH PINE, SPRUCE, BALSAM,
AUSTRIAN PINE & FRASER FIR

Free Horse Drawn Rides for customers

SATURDAY & SUNDAY
WEATHER PERMITTING
Stan Price (905) 878-1554

4 km south of Campbellville on the Guelph Line

J.P. TREE FARM

Cut your own Christmas Tree and you know it is fresh.

• Horse Drawn Sleigh Rides •

Spruce, Pine, Balsam

OPEN DAILY 10 A.M. - 4 P.M.

Starting November 29th through
December 19th.

Directions: Go north on Hwy. 25 to 15th Side Road, go west to Fifth Line & right 1 mile north.

05 Birthdays

BIRTHDAY PARTIES at Springridge Farm. Wagon rides, farm animals, collect a chicken's egg, haystack jumping, private party room and lunch. Milton, 878-4908.

11 Halls & Caterers

BANQUET ROOM AVAILABLE, from 10 to 100 persons. Ideal for Christmas Parties, Banquets, Meetings, Showers. Nascar Sport Lounge, 878-1880.

FOR ALL OCCASIONS up to 150 people. All facilities. Special homestyle cooking if required. 878-2759.

14 Wedding Services

PHOTOGRAPHY - Weddings or event photography. Reasonably priced. References. Call Steve or Louise (905) 878-4560.

WEDDING PHOTOGRAPHY - 100-115 proofs in album plus negatives. 15 years experience. Reliable and reasonable. Picture Perfect Wedding Photography. 905-639-6710.

30 Deaths

ODEHNAL, Margaret Jane (Peggy) - Passed away peacefully on December 6, 1997, at aged 79, at Kelowna General, B.C. (formerly of Milton). Lover of animals & diligent supporter of the S.P.C.A. She will be remembered by her brother Dick, daughter Barbara, son-in-law Klaus & grandchildren Kim, Debbie, Richard, Kathy & Mark. In lieu of flowers donations to the S.P.C.A. are appreciated. Cards may be forwarded c/o Barbara Budczinski, R.R. #1, Site 1E, Compartment 4, Peachland, B.C. VOH 1X0.

32 Florists



487 LAURIER AVE. 878-2881

Show you care... Send Flowers
Family owned for over 30 years



European Design • Romantic Weddings • Custom Designed Fresh Dried & Silk Arrangements • European Hand Tied Bouquets • Gift & Fruit Baskets • FREE Delivery to Funeral Homes
Corporate Accounts Welcome
876-1000 136 Main St. E. Milton

37 In Memoriams

BURTON, Harry - In loving memory of a dear and loving Father. What we'd give if we could say Hello, Dad, in the same old way; To hear your voice, see your smile, To sit with you and chat awhile. So you who have a father, Cherish him with care, For you'll never know the heartache Till you see his vacant chair.
Lovingly remembered by your eight children.

BURTON, Harry - In loving memory of a dear Grandfather and Great Grandfather. A sadness still comes over us, Tears in silence often flow, Memory keeps you ever near us, Though you died one year ago.
Lovingly remembered by your seventeen grandchildren and 3 great grandchildren.

BURTON, Harry - In loving memory of a dear husband. Alone, but never quite alone I face an empty chair; But sometimes in the silence I imagine he is there. My companion for so many years No longer here with me, And yet in some mysterious way He keeps me company.
Loved always by your Wife Laura.

CONNOR, Glenna - In loving memory of a dedicated teacher, wife, mother, grandmother, and friend. You are remembered daily for your enthusiasm and loving care of students during your teaching career. We treasure your loyalty and spirituality. We look forward to the day when we shall meet you again dear friend.

GATES, David - December 10, 1994 - In loving memory.

Three years have passed since you left us Quietly without a word you went your own way Joining other family and friends We have loved and lost too You are in our thoughts everyday And are sadly missed, but someday We know we will all meet again
Mom, Dad,
Brenda, Al, David and Jenna

REMEMBRANCES in the form of donations to The Milton District Hospital Foundation are appreciated.

37 In Memoriams

MADDEN, Jason - In loving memory - December 12, 1995. We who love you, sadly miss you, As it dawns another year, In our lonely hours of thinking, Thoughts of you are ever near. We all love and miss you, Mom, Dad, James, Stacy, Rebecca, Bradley, Tyler & Odessa.

MCDONNELL, Robert - In loving memory of a dear grandson who left us so suddenly on December 14, 1996.

Always remembered.
Grandmother Jean Manion and Aunts & Uncles.

40 Card of Thanks

A NOTE OF THANKS from the family of the late Mavis Varcoe to the many friends who showed their love and support at this very difficult time. Thank you notes have been passed out. If by chance we have missed you, please remember you're in our thoughts. A special thanks goes to Dr. & Mrs. Ivan Hunter and the staff at Milton District Hospital. Also the Rev. Bob Hyde and to the V.O.N.'s of Oakville.

Thank you again,
Jack Varcoe and Family.

55 Notices

WELCOME WAGON
SINCE 1930

• New in town?
• Getting married in 3 months or more?
• Having a baby?
• Establishing a new business?

PLEASE CALL US:
Community Welcome ... Linda ... 854-1563
... Marilyn ... 875-0519
Bridal ... Jackie ... 878-1907
Baby ... Gail ... 878-6540
Business/Professional ... Pat ... 876-4040

Celebrating an Anniversary,
Birthday or Any Special Occasion.
Announce it in the Champion -
Phone Sheena 875-3300

78 Firewood

FIREWOOD (winter prices). Seasoned hardwood. \$210 Bushcord, delivered, \$110 - 1/2. 878-8251.

FIREWOOD, 100% hardwood. 16 in. cut, split and delivered, 1 bush cord, \$200. 2 bush cords \$390. 4 bush cords, \$740. 5 bush cords \$895. Green wood, 5 bush cords \$750. Also logs available. 905-875-0877.

80 For Sale

DESIGNER CHRISTMAS
Ornaments & Decorations

30% to 50% OFF

HIGHEST QUALITY AVAIL.
@ WHOLESALE PRICES



Bethlehem PRE-LIGHTED, PRE-ASSEMBLED Christmas Trees, Wreaths & Garland. 3 Easy Steps & You're Ready to Decorate! Tree Styles Available: Tiffany, Sierra Fir, Douglas Fir... From 2' to 14'!
Convenient • Reliable • High Quality • Attractive

M-F, 10-9; Sat, 9-5; Sun, Noon-5

525 ONTARIO ST. S. • MILTON
(Corner of Fairview & Walker's Li. Cash - formerly Nicholson Lumber)

