



Linda Glover

Coverage is too late for trustees

It's too late for them to benefit, but Halton's public school trustees have voted to acquire conflict of interest insurance for the protection of future board members.

At a recent board meeting, trustees unanimously endorsed a request from board Chair Linda Glover that administration purchase the insurance.

"I'm here to protect trustees of future boards," said Ms Glover, noting that trustee pay has been lowered to just a \$5,000 honorarium.

As of January 1, 1998, the 10 members of the new public District School Board for Halton will have individual coverage of \$100,000 for legal fees incurred out of any liability claim made against them by a ratepayer.

Trustees were told by board administration that it is possible to get 90 per cent of legal fees paid at a premium cost of \$75 per trustee.

Five of Halton's current 18 trustees could have used the coverage earlier this year as they each accumulated at least \$7,000 in legal expenses from a civil court case. Ms Glover said she has a \$9,000 legal bill.

The Taxpayers Coalition Burlington took Ms Glover and trustees Flo Belford of Milton, Joe Pavelka, Ethel Gardiner, Flo Belford and Penny Siebert to court last year alleging their personal or family relationships with a board employee or federation member should have precluded them from voting on the 1996 board budget.

The case was withdrawn this past spring at the request of both parties.

Japanese officials take a look at Milton

Mayor Gord Krantz had plenty of opportunity to perfect his bows.

More than 30 Japanese municipal officials descended on Milton for one day last month to learn about Milton's council organization, finance, history, business and social safety programs.

A second group took in a similar tour of Oakville and a third visited Oshawa.

Bob Smith, Milton's economic development officer, said the visitors were all politicians who seemed to be targeting information on towns connected with the auto industry.

Those touring Milton came from all over Japan including Hiroshima, Osaka and Nagano, home of the 1998 Winter Olympics.

Mr. Krantz took the opportunity to try to sell

Milton as a business location, touching on transportation links and proximity to markets.

"It certainly was an opportunity to promote business," Mr. Smith said. "The exposure doesn't do us any harm."

The Japanese delegation was interested in the workings of council, percentage of elderly people in town, social service programs and facilities.

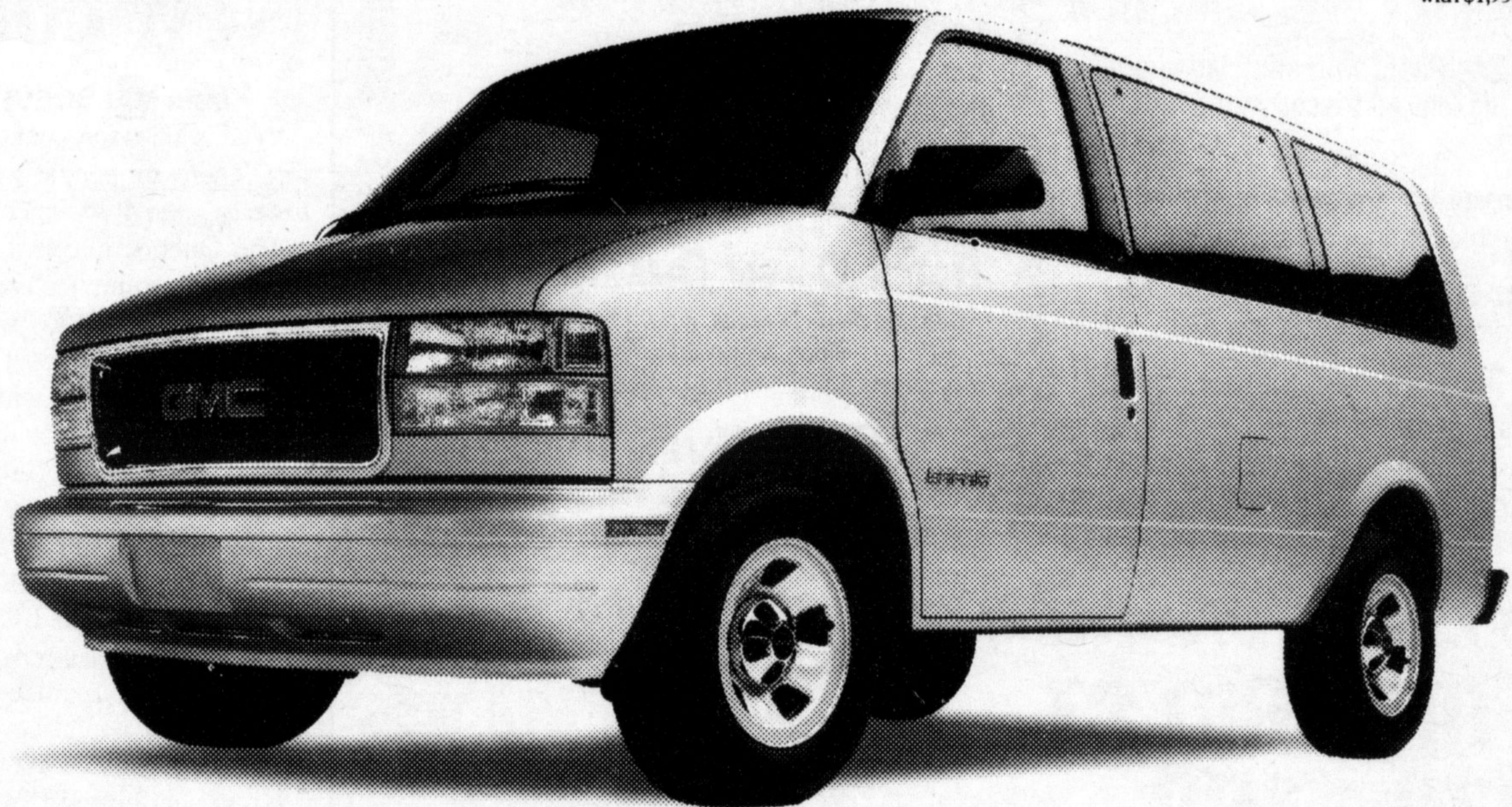
PONTIAC TRANS SPORT  BUILT FOR DRIVERS™

GMC

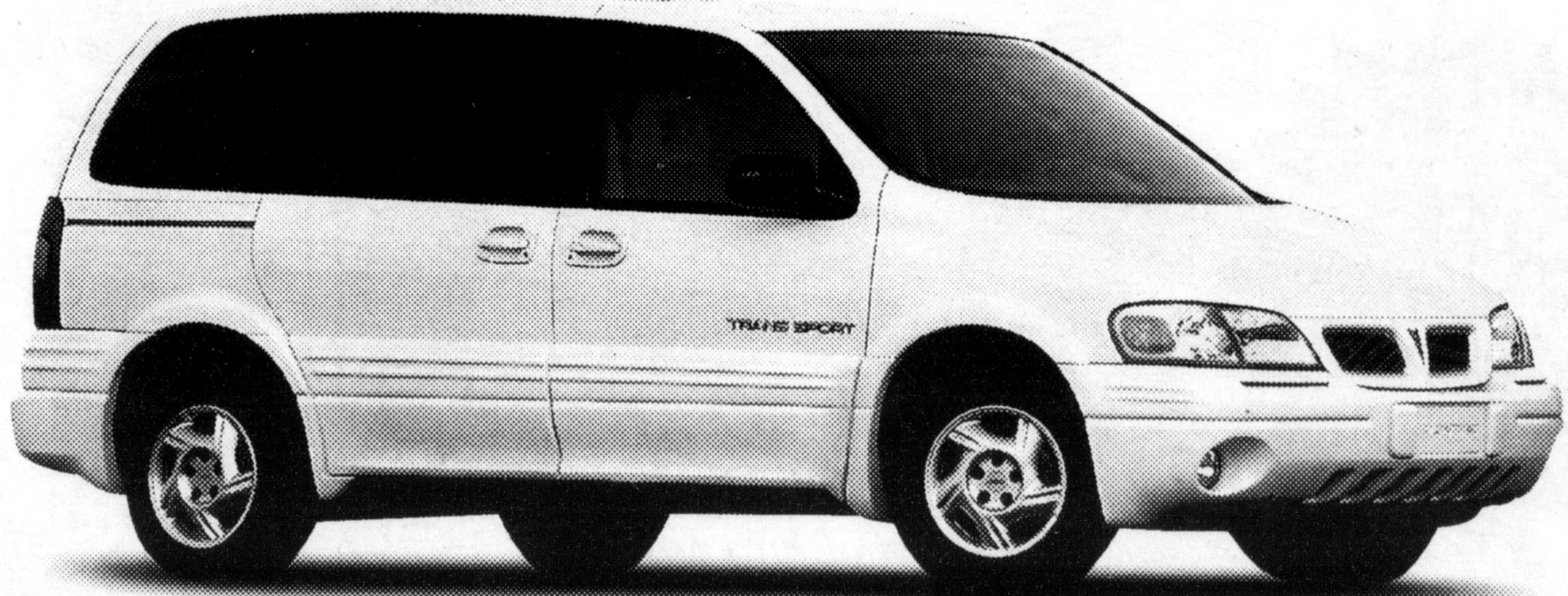
SAFARI
365 DAYS A YEAR

1998 GMC SAFARI VAN gets you a 190 HP Vortec 4.3 litre V6 engine, automatic transmission with overdrive, 4-wheel ABS, dual air bags, PASSLock™ theft-deterrent system, 5,500 lb. towing capacity, deep tinted glass, power door locks, 8-passenger seating, air conditioning and an AM/FM stereo cassette.

SMARTLEASE
\$299*
a month/36 months
with \$1,950 down



INTRODUCING OUR NEW GROUP RATES



1998 PONTIAC TRANS SPORT gets you a 180 HP 3400 SFI V6 engine, 4-speed automatic transmission, front and side driver and passenger air bags, child safety lock on sliding side door, air conditioning with pollen filter, 4-way driver manual seat adjuster, deluxe comfort tilt steering, front and rear intermittent wipers, AM/FM stereo cassette and deep tinted glass.

SMARTLEASE
\$299*
a month/36 months
with \$2,350 down



GET WHAT YOU WANT FROM YOUR CENTRAL ONTARIO PONTIAC/BUICK/GMC DEALERS.

MILTON CINEMAS
121 CHISHOLM RD.
(W. of Hwy. 25 • S. of 401)
24 HOUR INFORMATION LINE 876-3333

MORTAL KOMBAT II [AA]
Friday & Saturday nightly at 7:00 & 9:15
Sunday - Thursday nightly at 7:00pm only

ANASTASIA [F]
Friday & Saturday nightly at 7:00 & 9:15pm
Sunday - Thursday nightly at 7:00pm nightly
Sunday Matinee at 2pm

BEAN [AA]
Sunday Matinee at 2pm only

WALT DISNEY'S FLUBBER [F]
Friday & Saturday nightly at 7:00 & 9:15pm
Sunday - Thursday nightly at 7:00pm nightly
Sunday Matinee at 2pm

REMEMBER \$4.25 TUESDAYS
ALL MATINEE SEATS \$4.25



Don't forget to use your GM Card Earnings toward The Total Purchase Price or lease down payment of your next new GM vehicle.
What's YOUR card done for you lately?
HGM Card Earnings may be applied toward The Total Purchase Price or lease down payment of any eligible new General Motors Vehicle. Fleet sales and commercial leases excluded. For complete details on vehicle eligibility, see your General Motors Dealer.

SMARTLEASE
You could get lower monthly payments on any GM car or truck, call 1-800-32 SMART

You should know this: *SMARTLEASE \$299/\$299 per month/36 month lease for 1998 GMC Safari Van/1998 Pontiac TransSport Van equipped as described. Annual kilometre limit: 20,000 km. \$0.08 per excess kilometre. A minimum down payment or trade of \$1,950/\$2,350 and \$350 security deposit are required. Other lease options are available. Freight \$845/\$840, licence, taxes and insurance not included. Dealer may lease for less. Offer applies to the lease of 1998 new or demonstrator models. Dealer order or trade may be necessary. Offer applies only to qualified retail customers in Central Ontario. Limited time offers which may not be combined or used with other offers. See your Dealer for details or visit www.gmcanada.com (www.gmcanada.com is a registered trademark of General Motors Corporation.)

Halton District School Board - Insurance