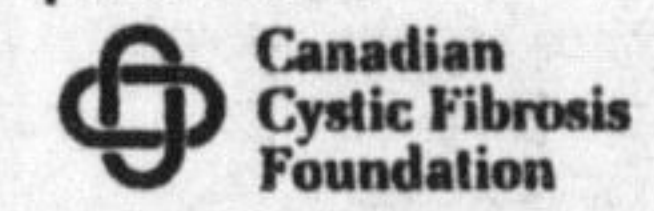




Dateline

Cystic fibrosis is one of medical science's mysteries. Why does the body produce mucus 50 times thicker than normal? This mucus produces fatal complications, yet there's still no cure. Support CF research.



• from DATELINE on page 15

to 12 years. The program is held Thursdays from 9 to 11 a.m. Call 876-1244.

The Milton Seniors' Activity Centre hosts a trip to downtown St. Jacobs for

lunch and then to the Town Centre for Band Music. Call 875-1681 to sign up.

The Halton Women's Centre presents 'Reflexology — Exploring Health Alternatives' with Alice Pearcey. Participants hear from experts about what

is involved in the technique. The workshop, which is part of a series, runs from 7 to 9 p.m. The centre is located at Hopedale Mall, 1515 Rebecca St., Suite 210, in Oakville. The cost is \$5 for members and \$6 for non-members. To regis-

ter, call 847-5520.

Halton Adolescent Support Services presents the second annual **Tomorrow's Gift Auction** at the Halton Regional Centre on Bronte Road at 6:30 p.m. The event features auction items, refreshments and entertainment. Tickets cost \$10. Call 639-0025, ext. 221.

Friday Nov. 14

It's **Hot Meal Deal Day** at the Milton Seniors' Activity Centre, 500 Childs Dr., at 11:45 a.m. The event features a hot lunch and fellowship.

Hornby Co-operative Nursery School on Steeles Avenue presents its annual **Pre-Christmas Shopping Night** from 7:30 to 9:30 p.m. The sale features crafts, toys, books, spices, clothing, decorations, tupperware and candles.

St. Paul's United Church, 123 Main St. E., holds its annual **Turkey Supper** with sittings at 4:45, 6, and 7:15 p.m. Tickets cost \$10 for adults and \$5 for children aged under 12 years. Children aged under 5 years are admitted free. Take-out dinners are available for \$10 with an advance ticket. Tickets can be purchased by calling 878-8895 or 878-6430.

Friday Nov. 14 - 15

The Milton Players Theatre Group presents **On Golden Pond** at the Milton Seniors' Activity Centre, 500 Childs Dr. The dinner theatres begin at 6:30 p.m. Tickets are available at Peggy's and Stop for a Party. For more information, call 875-0629.

Saturday Nov. 15

The United Way of Milton holds the **Town and Country Christmas House Tour** from 10 a.m. to 4 p.m. Three country homes and two town homes are professionally decorated for Christmas. Afternoon tea hosted by the Big Sisters Association of North Halton is served between 2 and 4 p.m. at Hugh Foster Hall. Tour tickets cost \$12 and afternoon tea costs \$4. They can be purchased at the United Way office, 44 Main St. E., or by calling Barbara Ramsden at 875-3895.

Workshop **'How Do We Market Ourselves?'** takes place at the Halton Women's Centre, 760 Brant St., Suite 27A, in Burlington from 10 a.m. to noon. The cost is \$5. Call 634-2119 or 847-5520 to register.

Ebenezer United Church — Guelph Line, north of Hwy. 401 — holds the **Buffet Style Roast Beef Dinner and Silent Auction** from 4:45 to 7:30 p.m. Call the church at 854-2423 for more information.

Monday Nov. 17

It's **Hot Meal Deal Day** at the Milton Seniors' Activity Centre, 500 Childs Dr., at 11:45 a.m. The event features a hot lunch and fellowship.

'Don't Give Up On Me — Raising Teenagers' is presented at the Halton Women's Centre from 7 to 9 p.m. The centre is located at Hopedale Mall, 1515 Rebecca St., Suite 210, in Oakville. The cost is \$5 for members and \$6 for non-members. To register, call 847-4420.

The Milton Seniors' Activity Centre, 500 Childs Dr., holds **Visioneering Session** to discuss ideas and suggestions for the future development of the centre. The event starts at 1 p.m.

Joyce Scott Non-Profit Homes Inc. holds its **Sixth Annual General Meeting**. The meeting starts at 7 p.m. at Milton Gospel Hall, 304 Ontario St. N.

Five ways to get your all-stars to the rink.

Chevy Venture Signature Series



3400 V6 engine, 4-speed electronic automatic transmission with overdrive, 4-wheel ABS, dual front and side air bags, child-security sliding door lock, air conditioning, AM/FM stereo with digital clock, programmable power door locks, seven passenger seating, Signature Series decal package.

SMARTLEASE
\$299[†]
36 mths/\$2,100 down

Bonus
Personally autographed
colour print of Bobby Orr
upon delivery.*

All-Star Sweepstakes[†]

Win one of 300 personally autographed Bobby Orr Boston Bruins hockey jerseys (approx. retail value \$180). All entrants will be eligible to win a trip for two to the 1998 All-Star game in Vancouver (approx. retail value \$2,750).

Test Drive

a Chevy Van and get a Bobby Orr
Signature Series coffee mug.*

LIMITED TIME OFFER



Chevy Astro



Vortec 4300 V6 engine, 4-speed electronic automatic transmission with overdrive, 4-wheel ABS, dual front air bags, child-security sliding door lock, side-guard door beams, air conditioning, AM/FM stereo with cassette, eight passenger seating, front high back reclining seats, deluxe chrome grille, deep tinted windows, power door locks.

SMARTLEASE
\$299[†]
36 mths/\$2,000 down

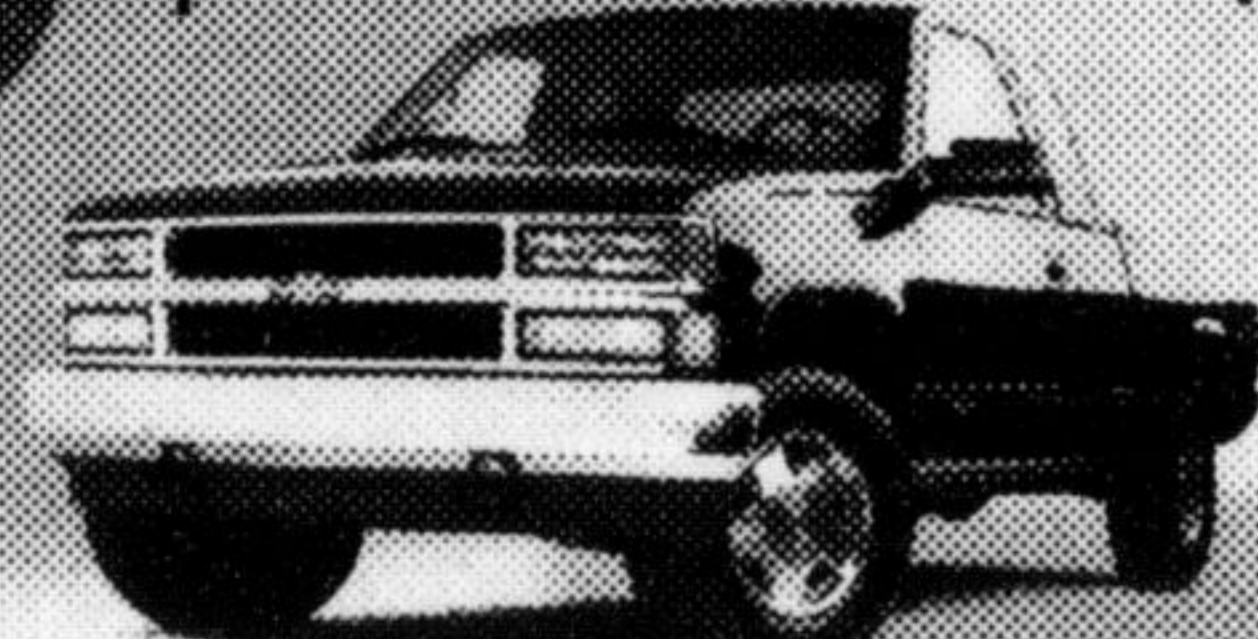
Chevrolet Cavalier Sedan



2.2 litre engine, 5-speed manual transmission, 4-wheel ABS, dual front air bags, child-security door locks, PASSLock™ theft-deterrent system, tinted glass, reclining front bucket seats, rear seat heat ducts, body side mouldings.

SMARTLEASE
\$199[†]
36 mths/\$1,330 down

Chevy Extended Cab Pickup



Vortec 5000 V8 engine, 4-speed electronic automatic transmission with overdrive, 4-wheel ABS, dual front air bags, PASSLock™ theft-deterrent system, AM/FM stereo with cassette, Tilt-Wheel™ steering, cruise control, deep tinted windows, body side mouldings.

SMARTLEASE
\$299[†]
36 mths/\$1,600 down

ADD \$66[†]
a MONTH for
4x4
36 mths/\$1,600 down

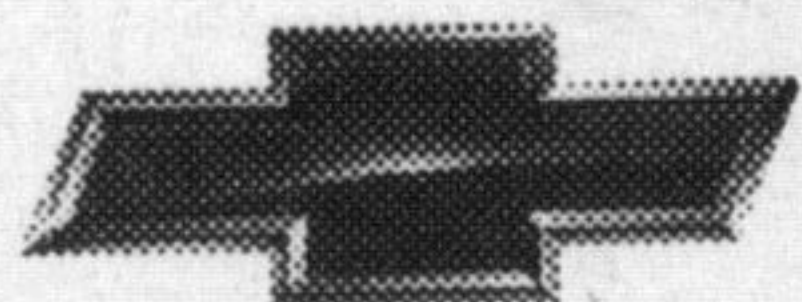
Chevrolet Malibu



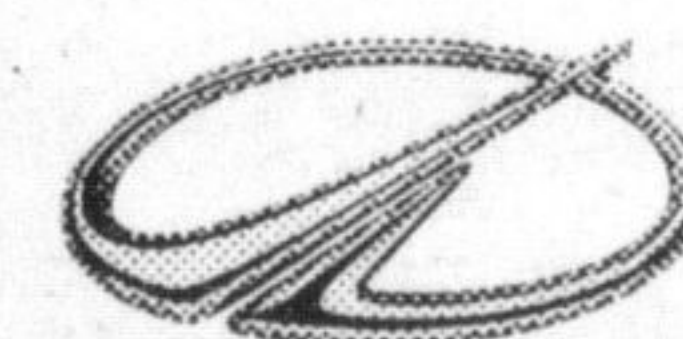
2.4 litre Twin Cam engine, 4-speed electronic automatic transmission with overdrive, 4-wheel ABS, dual front air bags, child-security door locks, PASSLock™ theft-deterrent system, air conditioning, AM/FM stereo with cassette, power trunk release, tinted glass.

PURCHASE
\$19,999^{††}

SMARTLEASE
\$278[†]
36 mths/\$1,800 down



AT YOUR ONTARIO
CHEVROLET/OLDSMOBILE
DEALERS



You should know this: *While quantities last. †Based on a 36 month lease for Chevy Venture Signature Series/Chevy Astro/Cavalier Sedan/Chevy Extended Cab Pickup/Chevy Extended Cab 4x4/Chevrolet Malibu equipped as described. Annual kilometre limit 20,000 km. \$0.08 per excess kilometre. A down payment or trade of \$2,100/\$2,000/\$1,330/\$1,600/\$1,600/\$1,800 and \$350/\$350/\$300/\$350/\$425/\$325 security deposit required. Other lease options available. ††Freight (\$840/\$845/\$620/\$895/\$895/\$695), licence, taxes and insurance not included. Dealer may sell or lease for less. Offers apply to 1998 new or demonstrator models of vehicles equipped as described. Dealer order or trade may be necessary. Offers apply only to qualified retail customers in Central, Southwestern, Eastern Ontario and Western Quebec. ‡To enter, pick up a ball of yarn at a participating Chevrolet/Oldsmobile dealer. No purchase necessary. Contest open to residents of Ontario and Quebec 18 years of age or older, except employees and immediate family of General Motors of Canada, participating Chevrolet/Oldsmobile dealers and their advertising and promotional agencies. Entries must be received before midnight November 29, 1997. Winners will be selected by random draw. Chances of winning depend on number of entries received. †††Limited time offers which may not be combined with other offers. See your Chevrolet/Oldsmobile dealer for details.