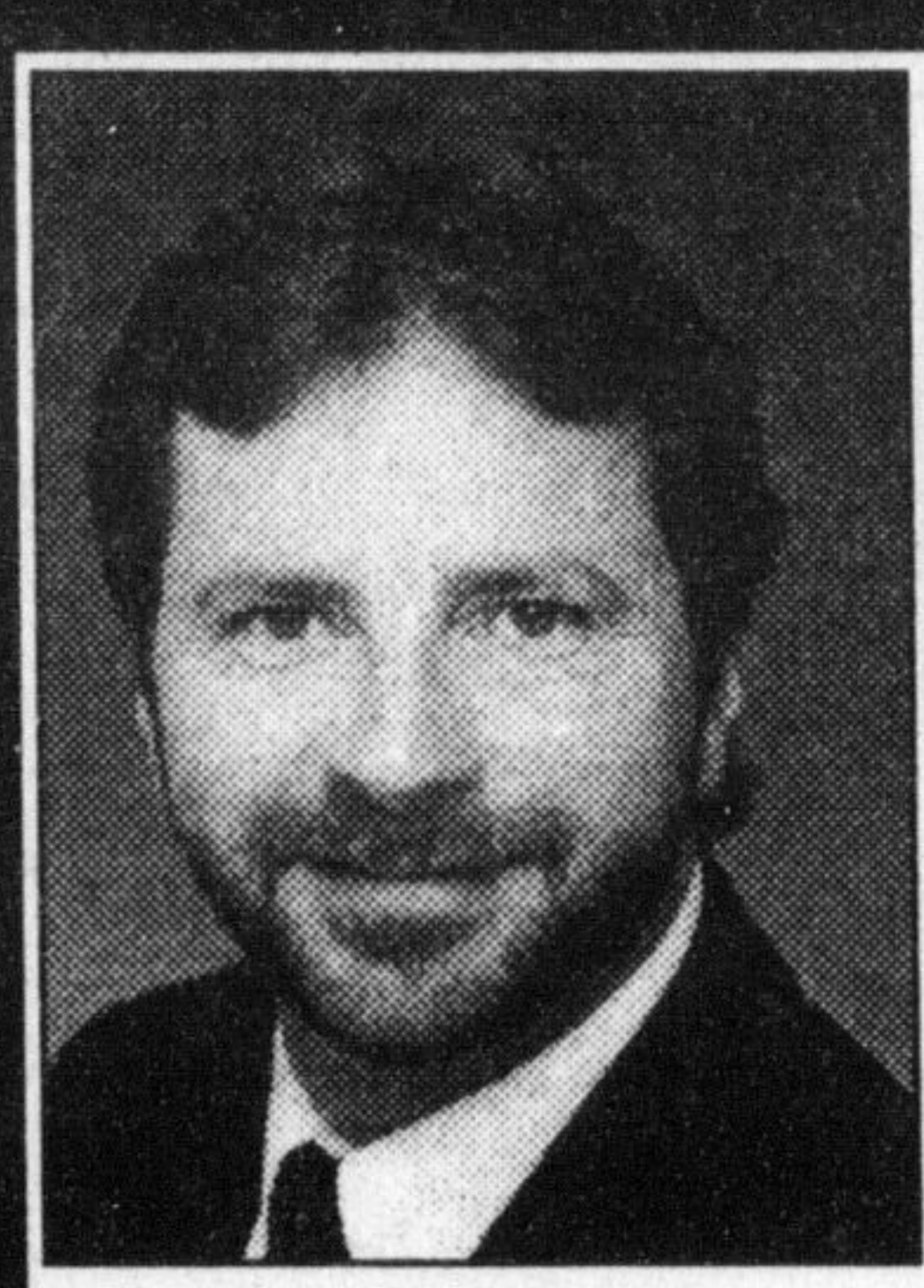
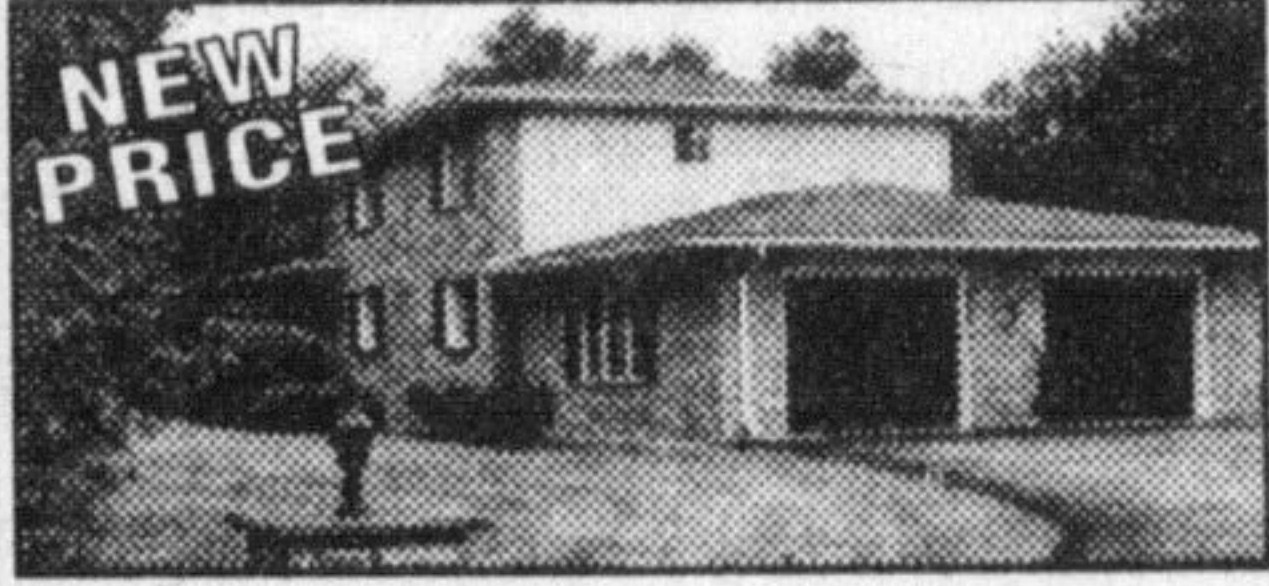


RE/MAX **MILTOWNE REALTY CORP.** *Going Above and Beyond For YOU!*
 #1 IN MILTON REAL ESTATE SALES & TRANSACTIONS
 INDEPENDENTLY OWNED & OPERATED
 22 Ontario St. S. 878-7777 e-mail: miltowne@globalserve.on.ca



CLAYTON HACKENBROOK
 Associate Broker
878-7777

YOUR SEARCH IS OVER! HOLD YOUR HORSES!



NEW PRICE
 This superb 4 br custom built home is located in a very private setting on 8.44 acres. Featuring approx. 2800 sq.ft. with central vac, air, 2 kit, fin bsm't with FP, main flr unique rm with FP and many other unique features. An added bonus is an oversized dble garage plus a detached gar/workshop with hydro, water and heat. Call Clayton to be the first to view. Asking \$299,000.



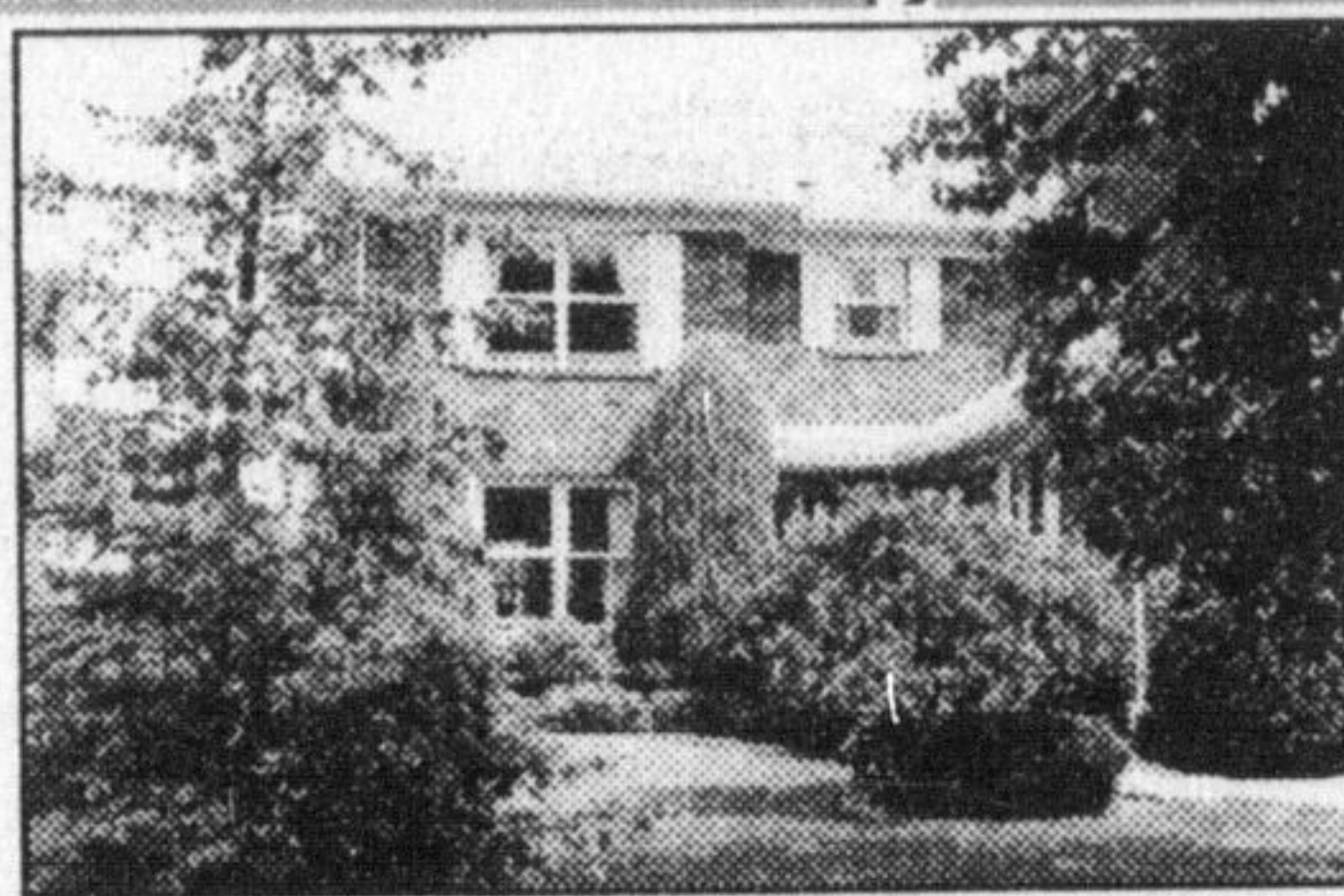
I just listed this superb 10 acre hobby farm located just north of town. This spacious sidesplit is in showroom condition with a large oak kitchen, family room, 3+2 brs, 2 1/2 baths, central air, skylight and much more. Outside is a dble gar., 6 stall barn with loft, pool, pond and paddocks. For more details call Clayton. Asking \$319,000.



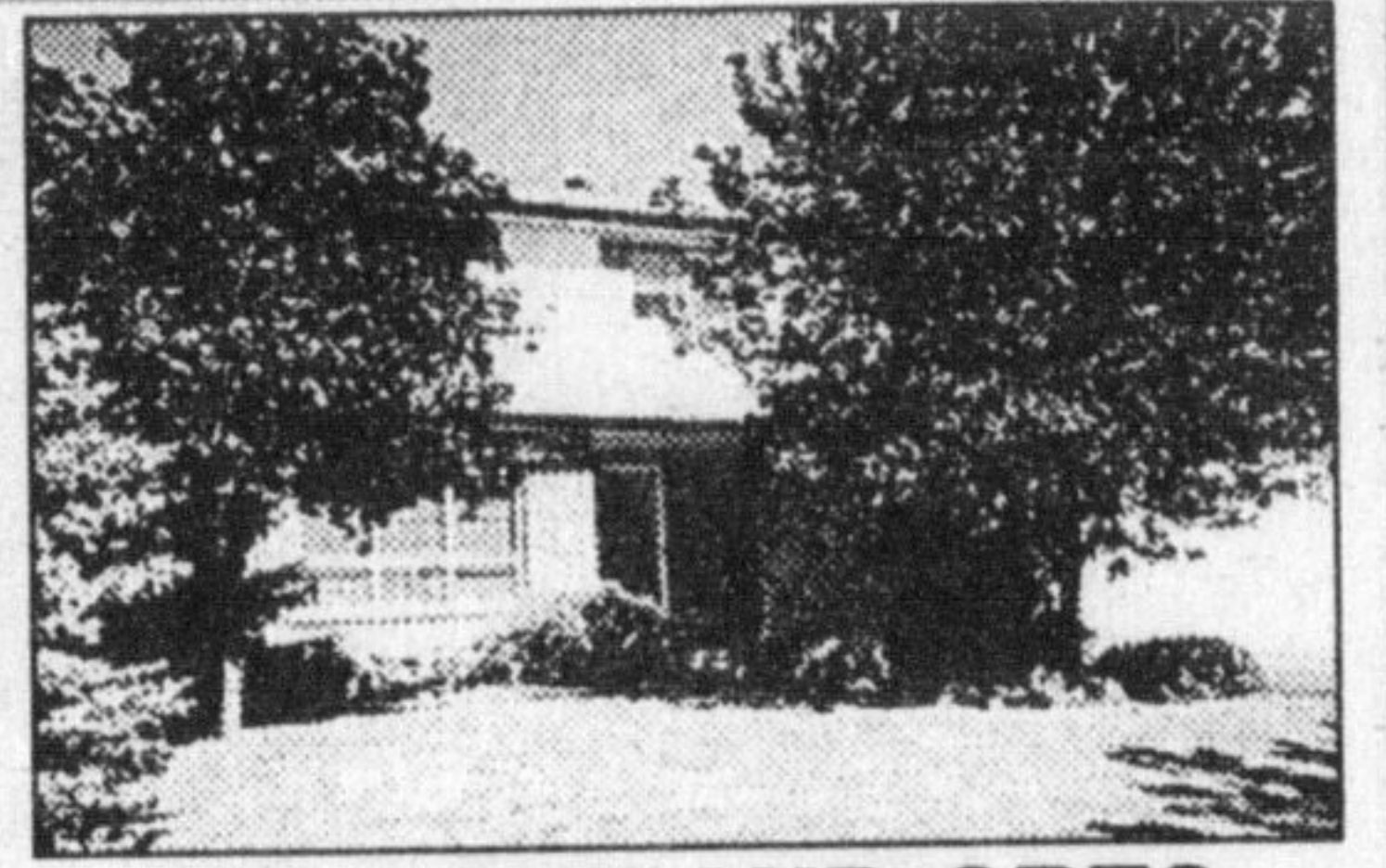
PLENTY OF ROOM
 In this spacious townhome. This home features upgraded flooring, fin. basement, 2 1/2 bathrooms, plus separate jacuzzi and eat-in kitchen. Located in a good area with use of pool and rec and has a single garage. Call Clayton to view. Asking \$137,900



CAROL M. BROOKS
 Sales Representative
 Office: (905) 878-7777
 Residence: (905) 875-0067
 Toronto Line: 825-4485



ROBERTSON CRESCENT
 Located in a very desirable family neighbourhood & close to all amenities, this all brick home offers 4 bdrms., ens. bathroom, greenhouse style kit. w/abundance of kit. cupboards, main floor fam. room w/ woodburning fireplace & wet bar, sep. living & dining rooms, extensive landscaping w/poured concrete patio & walkway. Call Carol for more information. **NOW \$279,900.**



422 GOWLAND CRES.
 Recently upgraded and decorated. 4 bedrooms, ensuite with new 3 pc bathroom, eat-in size kitchen, new ceramic floors. Separate living and dining room with new oak flooring and new cove moulding. Family room with fireplace. Central vac. Large deck and much more. Truly a lovely home. \$259,000.

JOHN (JP) PEARS
 Sales Representative
CALL 878-6859
 E-mail me at JPI @globalserve.on.ca or see my listings on the net http://www.mls.ca

FOR THE LARGER FAMILY

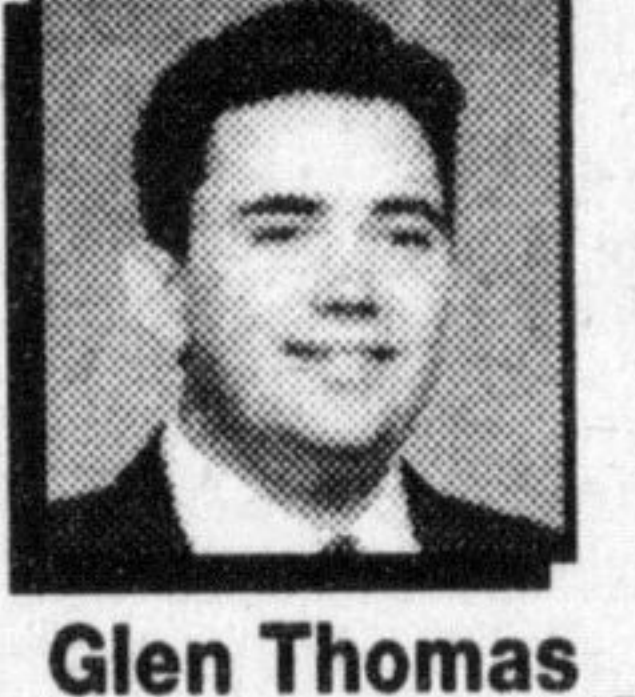


To see this updated Dorset Park beauty, 4 bdrms., 2 washrooms, huge dble. car garage with workshop, main flr. F.R. & den, separate L.R. & D.R., newer windows, flooring & kitchen. \$199,900.

ROOM TO ROMP



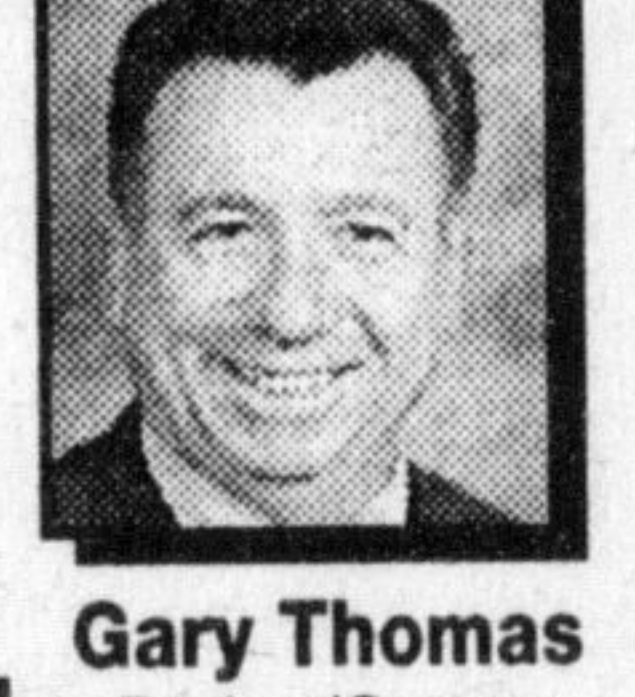
4 bedroom, end unit town home, move in condition, desirable location, partly finished basement, fabulous backyard fully fenced. Asking \$126,900.



Glen Thomas
 Associate Broker
878-7777



DON'T MAKE A BAD CALL!
 List with a real estate professional.
 Call Glen or Gary today.



Gary Thomas
 Broker/Owner
 Res. 875-3700
878-7777

List your home with Milton's Exclusive Realtors with National-For-Sale-Phone exposure 1-800-465-7253 Enter Ad# & hear what your home can sound like.



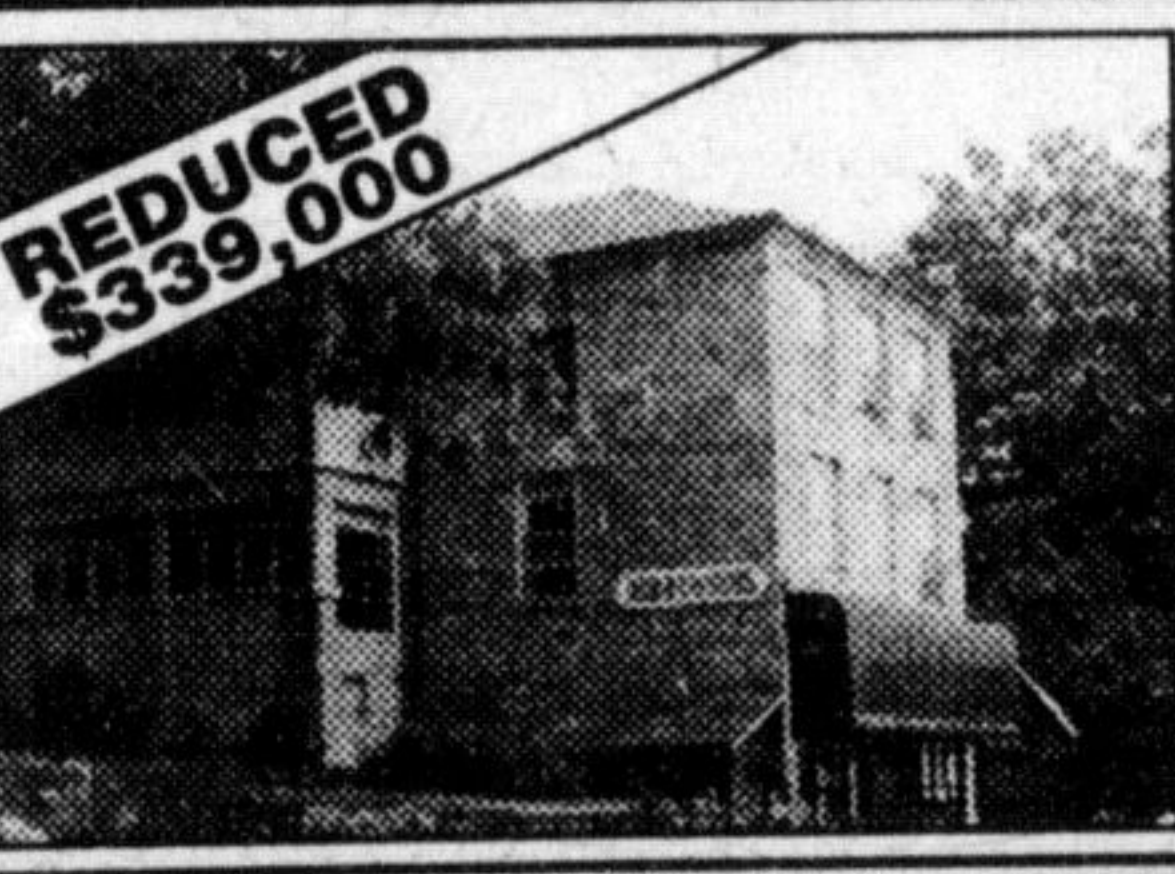
HEATHER ASHBEE-MEEHAN
 Sales Representative
 Office: 878-7777
 Toronto Line: 825-4485



FEAST YOUR EYES
 On this custom built open concept home. 4 bedroom, 4 baths, cathedral ceiling in great room. Spacious, inviting kitchen with centre island & walkout to one of the prettiest lots around, view of woods & pond. Peace & tranquility. Added bonus for inlaw suite. Now reduced to \$329,000.



BROOKVILLE ESTATES
GUELPH LINE AT 15 SR JUST N. OF 401
 Lovely custom 4 bedroom home on quiet court, many upgrades & lovely pastoral setting. Large deck, extensive landscaping, super value. \$309,000.



INCOME TO PAY THE MORTGAGE
 Historic Eden Mills, charming stone building, character abounds 4 bright airy apartments & approx. 1000 sq. ft. retail overlooking mill & river, treed lot, patios & hot tub, live here & have income too!

IF YOU HAVE THE FAMILY?



We have the house. Large rooms, big backyard with inground pool. Central air, central vac, fireplace, walkouts, double car garage, all located on one of Milton's finer streets. \$239,000. AD# 18885

PALOMINO RANCH



This estate site is just west of Carlisle Golf Club. 1/2 acre to 1 acre lots featuring custom built homes. Bungalows & 2 storeys available. Call for Open House times & information

NEW LISTING



If you're just starting out this country bungalow is a great place to end up. 3 bedroom home w/large lot & has some recent upgrades. Oversize garage/workshop. Please call for details. \$159,000 AD# 19579

TWO BUILDING LOTS



Building lots available, quiet court location just off Bronte Rd. (50x145) * (60x100). Both priced to move at \$89,900

NEW LISTING



FAMILY PORTRAIT - Your family will look good in this home. Located in Millcroft, this 3 bedroom home is very well appointed. Tasteful decorating throughout. Call to view. \$252,500 AD# 19577

GENUINE COUNTRY



This wonderful 3 bedroom bungalow w/triple car garage is situated on a park-like settinglot & features many custom features designed for fine country living. Well worth viewing. \$339,000 AD# 18886

LIST WITH GLEN OR GARY TODAY!

JEAN SNOWDEN
 Sales Rep.
878-7777
 Office



AMBIANCE OF THE NORTH... combines with the convenience of the south in this new estate development less than 10 minutes from 401/Guelph Line, 15 minutes from the QEW, handy to Milton, Burlington and the 401. If this sounds impossible let me introduce you to Timber Run...19 estate lots on 107 acres of escarpment paradise. Sit down with the builder and choose the home of your dreams. This project is brand new, with construction to start spring '98. Choose your prime lot now. Shown above: 1785 sq. ft. bungalow with cathedral ceilings, triple garage. \$329,500. Call Jean for information package.

scott B PRIOR
 associate BROKER
 (905) 878-7777 TOR (905) 825-4485

Just a thought ...
 Dreams have as much influence as actions.

PRIDE OF OWNERSHIP



This 3 bdrm, end unit townhouse has been superbly decorated throughout, with the feel of country and features a remodeled kitchen, mostly new broadloom, main floor FR with gas FP, new patio door, new oak railings, hardwood flr in entrance, playroom/office on main floor - too many features to list! Offered at \$138,900.

BEGIN OR RETIRE HERE



This super starter townhouse offers great potential for a first time buyer or someone looking to move down. Set in a great location, backing onto parkland, this 3 bdrm townhouse has been nicely decorated and includes upgraded broadloom and ceramic flooring in the kitchen area. This won't last at \$121,500.

COUNTRY CHARMER



Located in the heart of Campbellville, this charming property is currently operating as an antique/gift store, fully rented, commercial zoning. Super investment potential. Call Scott for further details. Offered at \$164,900.

MAKE AN OFFER

1.1 acres of prime, industrial land, located on Nipissing Road, must be sold. Please call Scott for further details. Offered at \$89,900.