



Sutton
GROUP
sutton group -
people & properties inc.
AN INDEPENDENT MEMBER BROKER

Your **Halton-Milton Connection**
905-844-5000

Relocation Specialist

internet: <http://www.mls.ca> e-mail: weide@globalserve.net

John Weide
ASSOCIATE BROKER



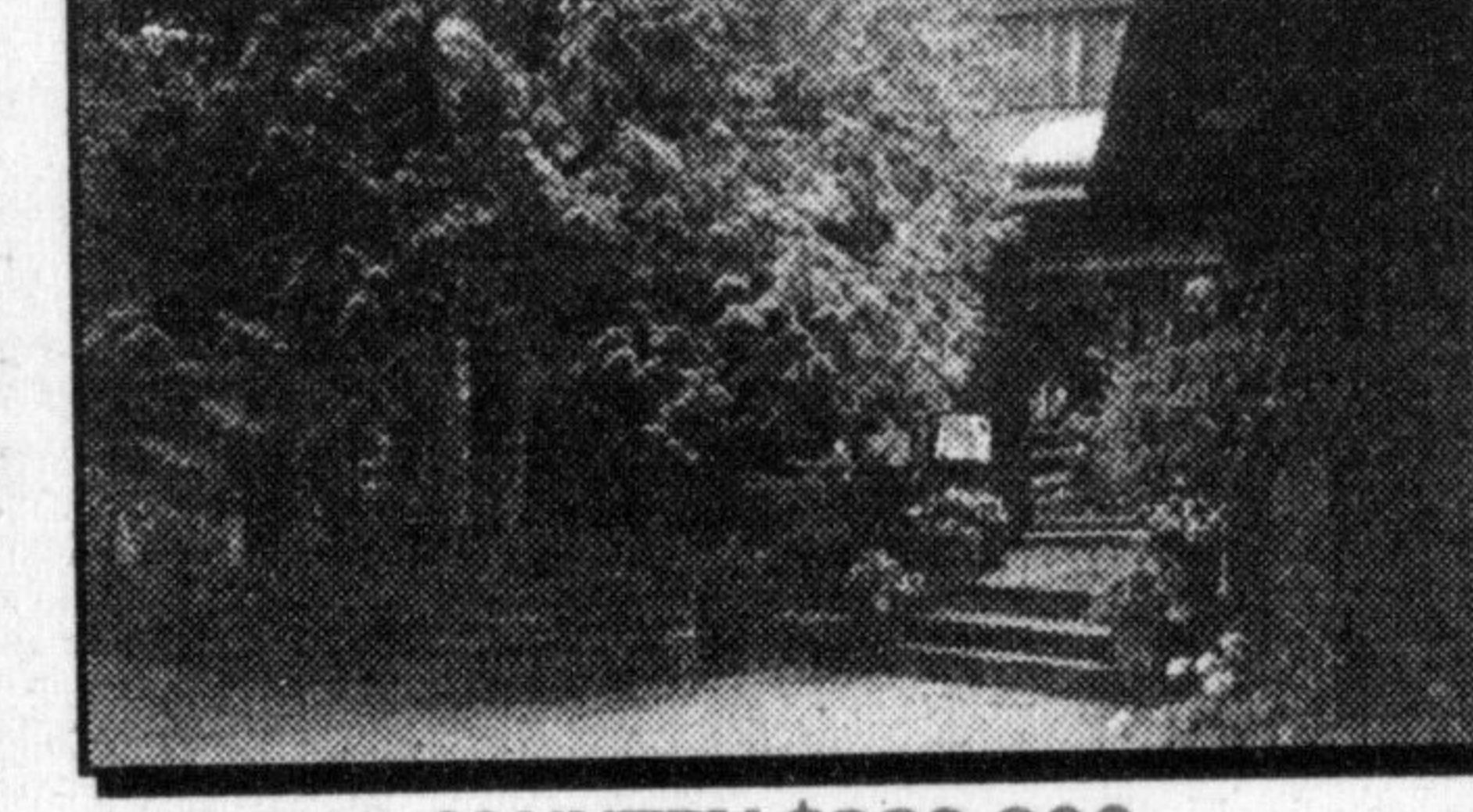
COUNTRY RETREAT PRIVATE OR CORPORATE \$999,000

Prime location of 41 magnificent acres, only half an hour from the airport. North of Milton, was movie setting for "I'll Take Manhattan". This unique 3000 sq. ft. + rambling country bungalow is nestled in a picturesque setting of mature pines and maples, and a long private driveway. A sparkling brook flowing from two crystal clear spring fed ponds, stocked with beautiful Rainbow Trout. Professionally landscaped grounds, with pagoda bridge overlooking the water fall and rushing brook complete the picture. Also included in the estate is a fully self-contained rustic guest cottage featuring a floor to ceiling field stone fireplace, large picture windows and many other delightful features. Other buildings on the property include a large 20'x40' two car garage equipped with electronic garage door opener. A 24'x30' storage barn, rustic 24'x24' sugar cabin and a 10'x12' change house by the pond. **John Weide**



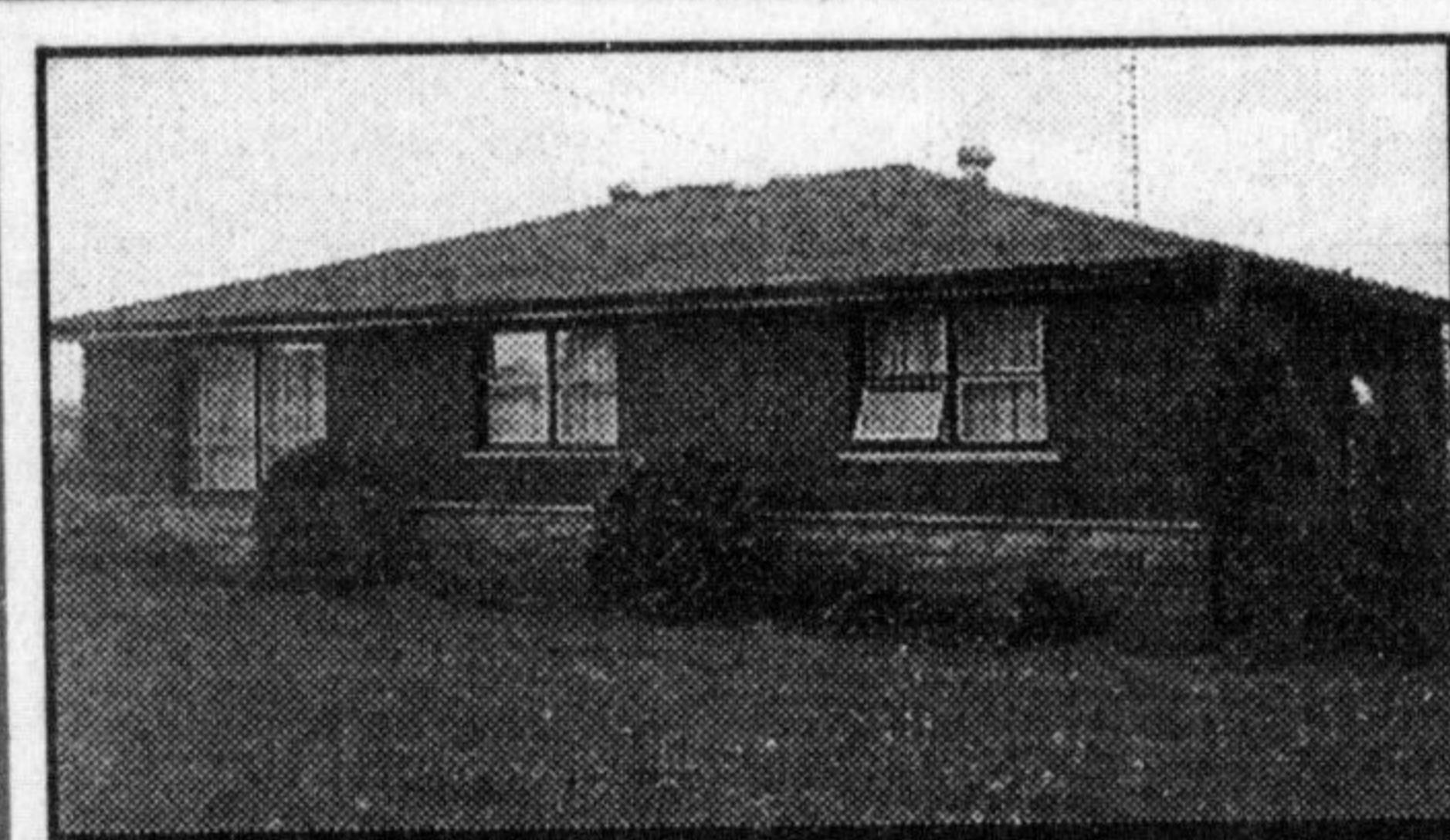
CAMPBELLVILLE COUNTRY ESTATE - A 10+ \$699,000

This quality built stone-style home with Marley roof situated on 5 acres. Inground pool 43 ft. x 18 ft. Huge hall-style living room is 2 floors high with 4-sided fireplace, wraparound staircase and cathedral ceilings. Master bedroom with 5-piece ensuite and sauna, walk-in closet. Oak kitchen with quality finishings. Separate pantry, in-law/nanny suite. Huge bedroom or studio over triple garage. Ceilings higher throughout. A huge family/party room on the 2nd floor, complete with kitchen which overlooks centre of home. Covered balcony decking. Ground source heat. Approx. 6200 sq.ft., Southwest of Campbellville. Must see! **John Weide 844-5000**



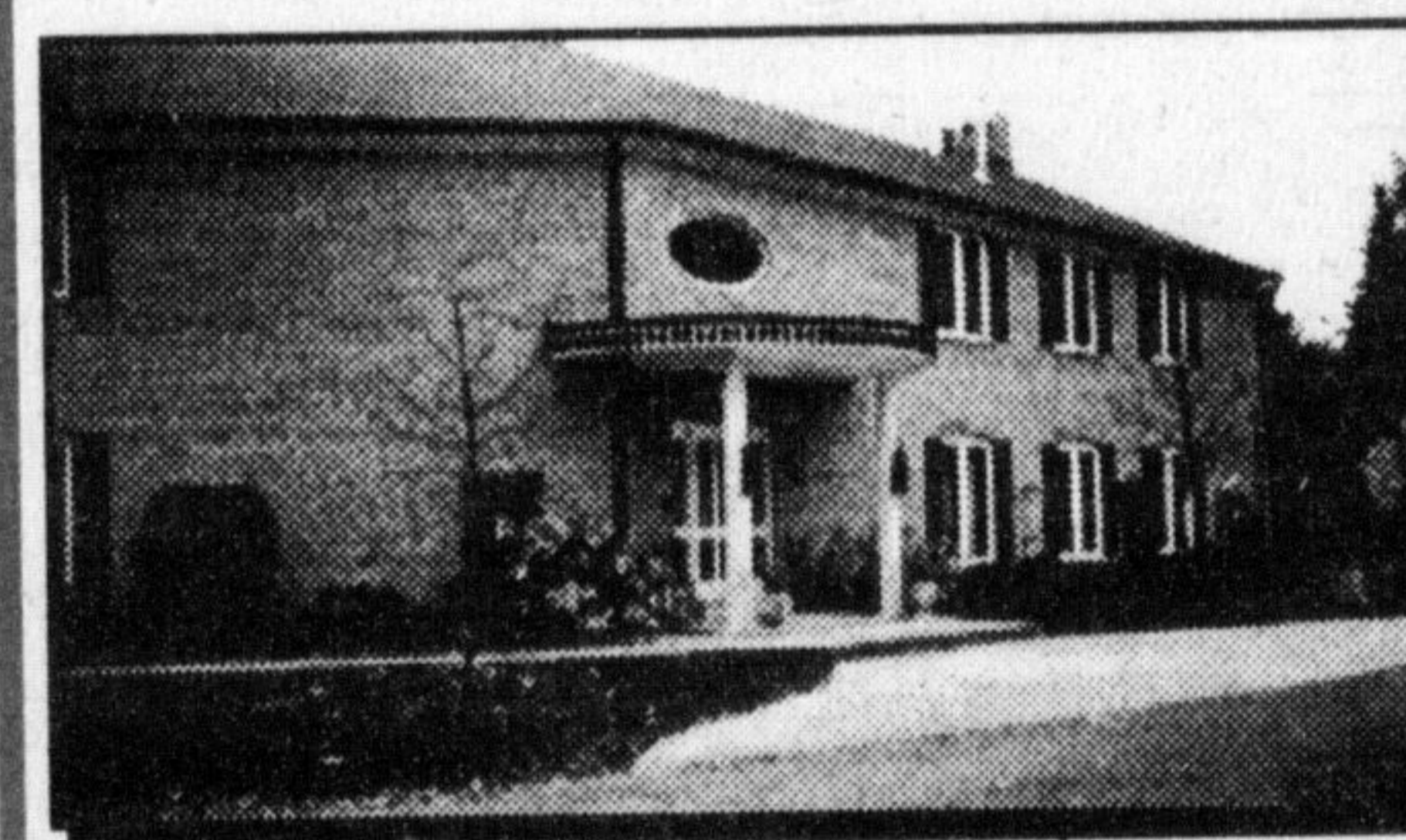
NEAR CAMPBELLVILLE - RETREAT IN THE COUNTRY \$329,900

A beautifully appointed custom home - country charmer. Large 20 ft. kitchen with skylight, quality cabinets and woodburning stove. Step into the screened porch/deck overlooking very private treed woodlands with stream. Living/Family room w/stone FP and walkout to balcony. Cathedral ceilings, plush broadloom and hardwood flooring. Main floor laundry room, central air, interlock driveway plus many, many extras. Take a look inside! Paradise found just S/W of Campbellville. **John Weide 844-5000**



MILTON - BUSINESS \$299,000

Over 2 acres for dry industrial uses. Complete with fine home and barn, ideal for small business, landscaping, dog kennel, storage facility etc. Subject to application approval. Located just north of 401. Excellent investment opportunity! **John Weide**



PRESTIGIOUS LOCATION \$799,000

Over 7,000 sq. ft. on main levels, 10,000 sq. ft. in total, huge principal rooms, quality finishings, French festoon mouldings. Many inclusions, heating 1996, \$1300, M/BR over 1000 sq. ft. Party room. 2 rec rooms. See to believe it. A 10+ **John Weide**



NATURE AT ITS BEST! \$369,000

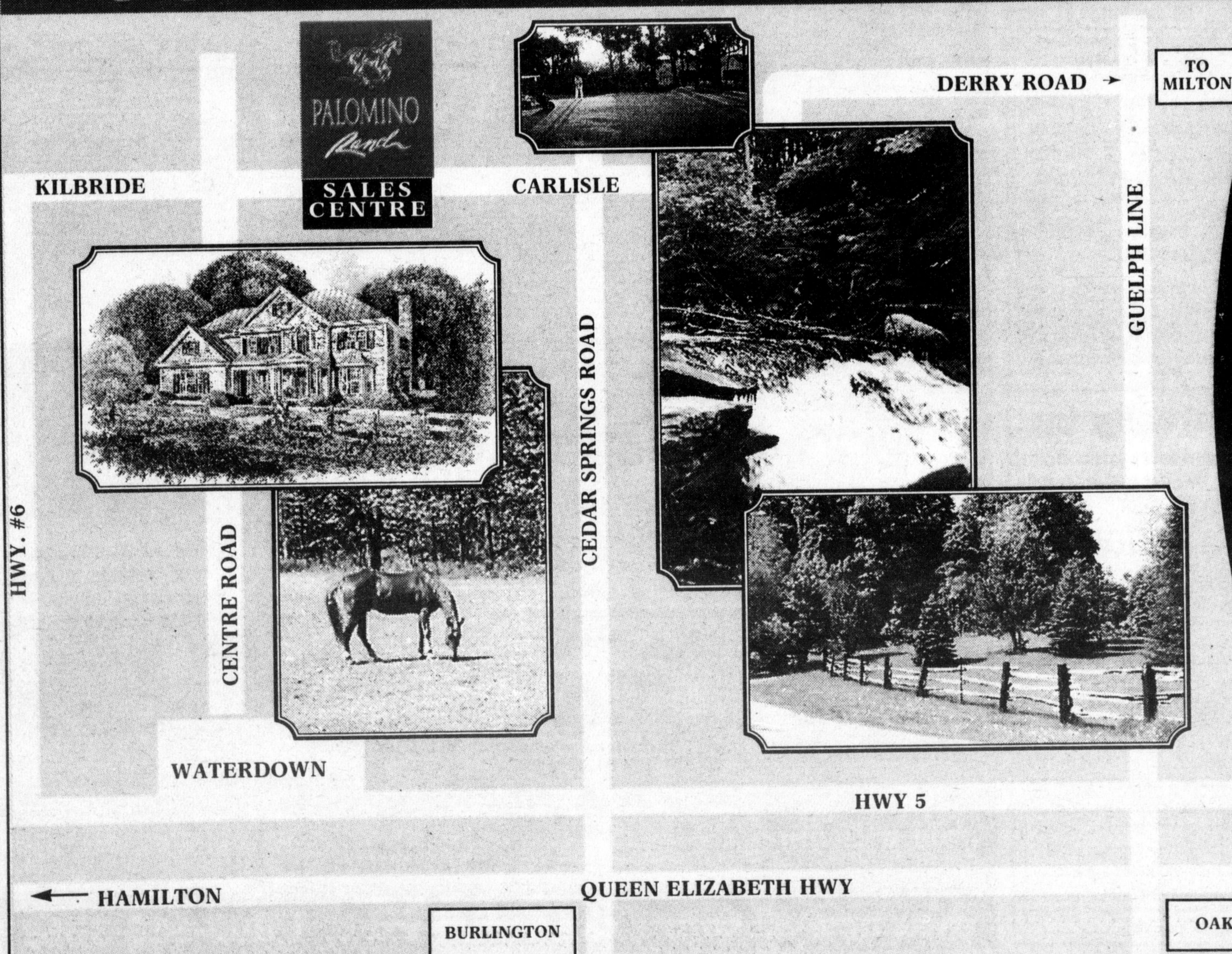
Southwest of Campbellville, considered by many as the prettiest lot on the Escarpment, quality built raised ranch with finished lower level - could be in-law suite! Huge sunroom overlooking flowing tiered creek with pond and trees. Invest in a dream! You must see the back lot! On 4.7 acres. **John Weide 844-5000**

CARLISLE \$299,000

118 acres. Ideal building site for estate home or horse farm, land is level, rolling, treed in parts, zoned agricultural and Halton water management. Investigate, Corner of Centre Rd and Concession 10.

John Weide 844-5000

*Walk to the Carlisle Golf & Country Club
Enjoy the Country Atmosphere & Lifestyle*



PALOMINO
Ranch

**From \$298,900
to \$398,900**

VANHOEVE CONSTRUCTION LTD. **Charleston** HOMES

In Carlisle,
cradled by protected escarpments and conservation lands, come the exceptional estate homes of Palomino Ranch on 1/2 acre & 1 acre lots.

For extraordinary pre-construction prices, call today or come by this weekend. Sales office now open.

HOURS

MON-WED 3-7 pm
SAT/SUN 1-5 pm
SITE 905-690-1790
905-338-9000

RE/MAX Abouttown Realty Corp.
Christopher Invidiata
Sales Representative