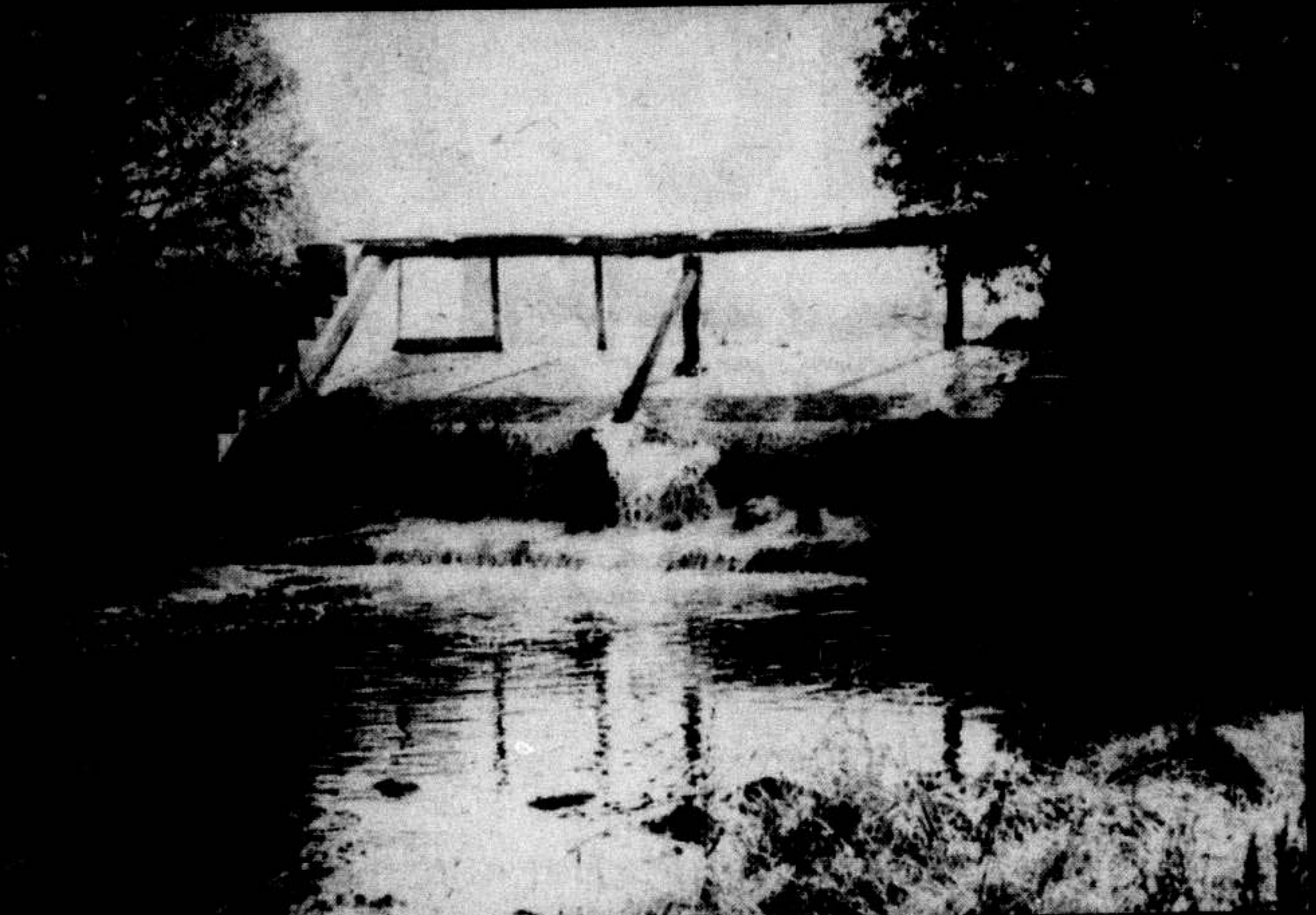




Sixteen Mile Creek south of Milton.



The Credit River bubbles through Norval.



Water tumbles over an old dam at Stewarttown.



Picturesque Fairy Lake in Acton.

Halton waters



Trees shroud a creek flowing by Rotary Park in Milton.

Silvery brooks and creeks crisscross Halton Region and, along with the Credit River, provide a watery contrast to the rolling hills, flat farmland and stately cliffs of the Niagara Escarpment for which Halton is well known across southern Ontario.

And when we needed a lake we made one, and no one could dare estimate how many weary Highway 401 motorists outbound in long, smokey lines from Toronto have found solace in the view of the lake at Kelso Conservation Area near Milton.

Photos by
Gerry
Flaherty



A beaver pond on the Milton-Halton Hills Town Line, north of 15 Sideroad.



A gentle waterfall near Kilbride.