

4-H girls measured

Milton Tip Top Tailors 4-H club held the first meeting at the home of assistant leader Pearl McWaters Feb. 12. Leader Gloria Oswald distributed members' pamphlets and leaflets. Each girl will make a dress with a jacket as optional. Fibres and fabrics and choosing the pattern were discussed by the leaders, and equipping a sewing box was discussed.

Group work was taking and recording the measurements of each member. The girls chose black printing on orange as their colors.

In the election of officers, Mary Ann Poland was named president, Kathy Blair vice-president, Kelly Corp secretary, Lee Ann Ford treasurer. Other members include Julie Syer, Cheryl Exeard and Colleen Foley.

The village homes . . .

Continued from page B1 the oldest homes in the village. Under the stone is the original log structure. It is owned by Mr. and Mrs. Roy Wood and is the home of Mr. and Mrs. Fred A. Dick. The house has an interesting history of owners beginning with Mr. and Mrs. William Blacklock and family who lived there more than 80 years ago. Their youngest son Thomas, mentioned earlier, was buried at the Campbellville burying ground and had the distinction of having The Hon. Arthur Meighen give the graveside address. This was the first home of Mr. and Mrs. Robert Menzies, followed by Dr. and Mrs. Carbert.

House number seven is owned by Mrs. Gordon Agnew. Built by one of Campbellville's early settlers, Mr. Elliott, the house was occupied for many years by Mrs. Sophia Patterson.

Two century homes, the Wheelihan and Elliot houses, will be featured in coming weeks.

We're available

Yes, your Champion is available on Wednesday at the following newsdealers:

HALTONVILLE

Jennings General Store

BROOKVILLE

McLeod's Store

ACTON

Acton Smoke Shop
Ed's In and Out
Royal Milk Store

GEORGETOWN

Stevens Store
Fendley's Store
Joe's Tuck Shop
Delrex Smoke Shop

SPEYSIDE

Speyside General Store

HORNBY

Hornby General Store
Country Fare

DRUMQUIN

Drumquin Store

OMAGH

Omagh Store

PALERMO

Palermo Store
Colling's Station

NELSON

Nelson Variety

LOWVILLE

Robertson Gulf
Mount Nemo Variety
Lowville Variety

KILBRIDE

Coole's Store

CAMPBELLVILLE

Mohawk Inn
Early's Garage
Bob's Truck Stop
Opera Emporium

MILTON HEIGHTS

Daviau Variety
Parkside General Store

In and Around MILTON

Chalet Restaurant,
Dew-Drop-In,
Hood's Drive-In,
Bonin's Esso,
Alfonso's Fruit Market,
West End Meats,
Milton Variety,
Fifth Wheel Stop
Harris Stationery,
Beckers Store
The Champion,
Eisley's Pharmacy
Ledwith's Super Save,
Milton Drug Mart,
Plaza Smoke Shop,
Caravan Restaurant,
Mac's Milk,
Mountview Restaurant,
Milton District Hospital
10-25 Service Station.

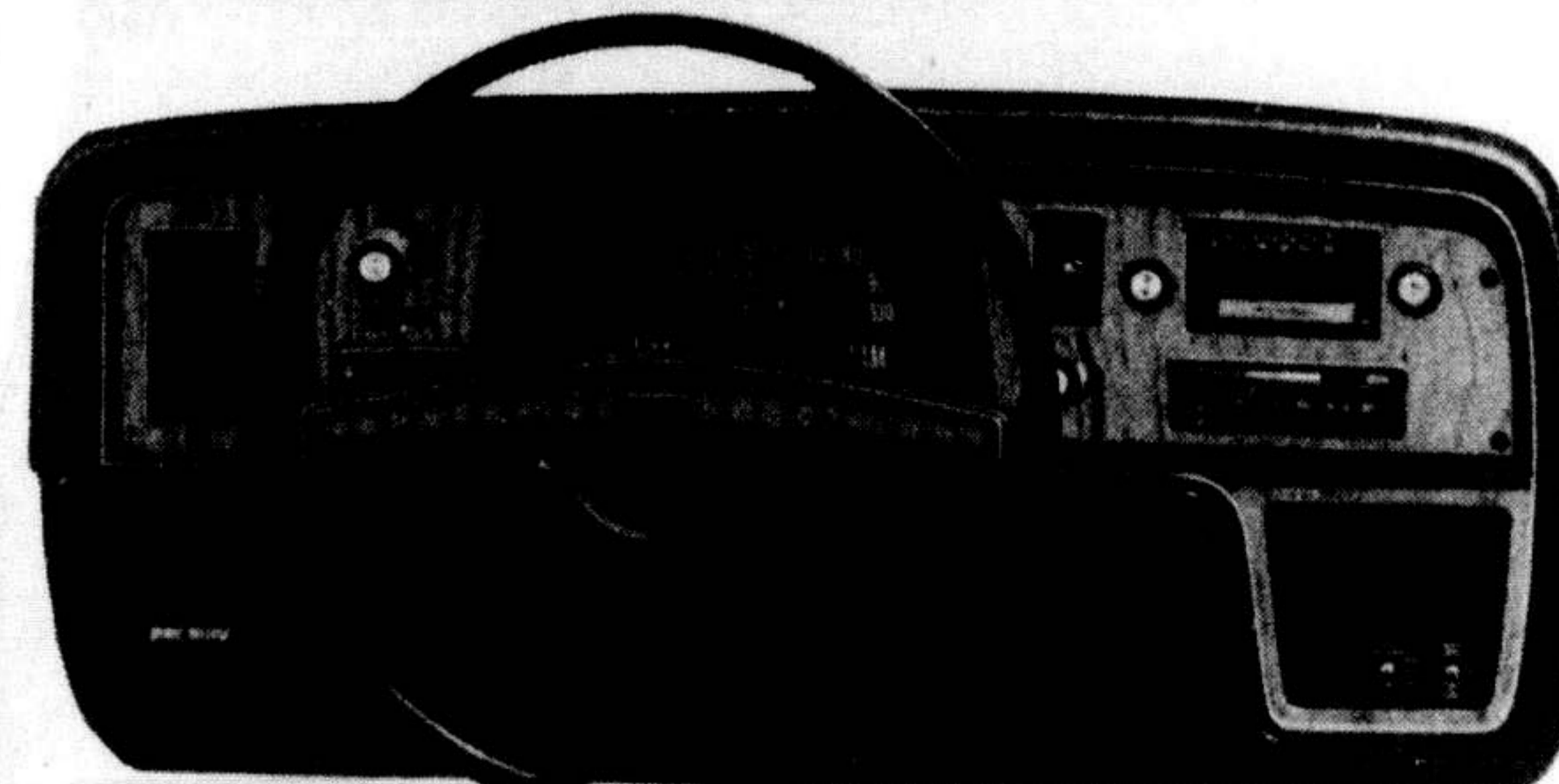
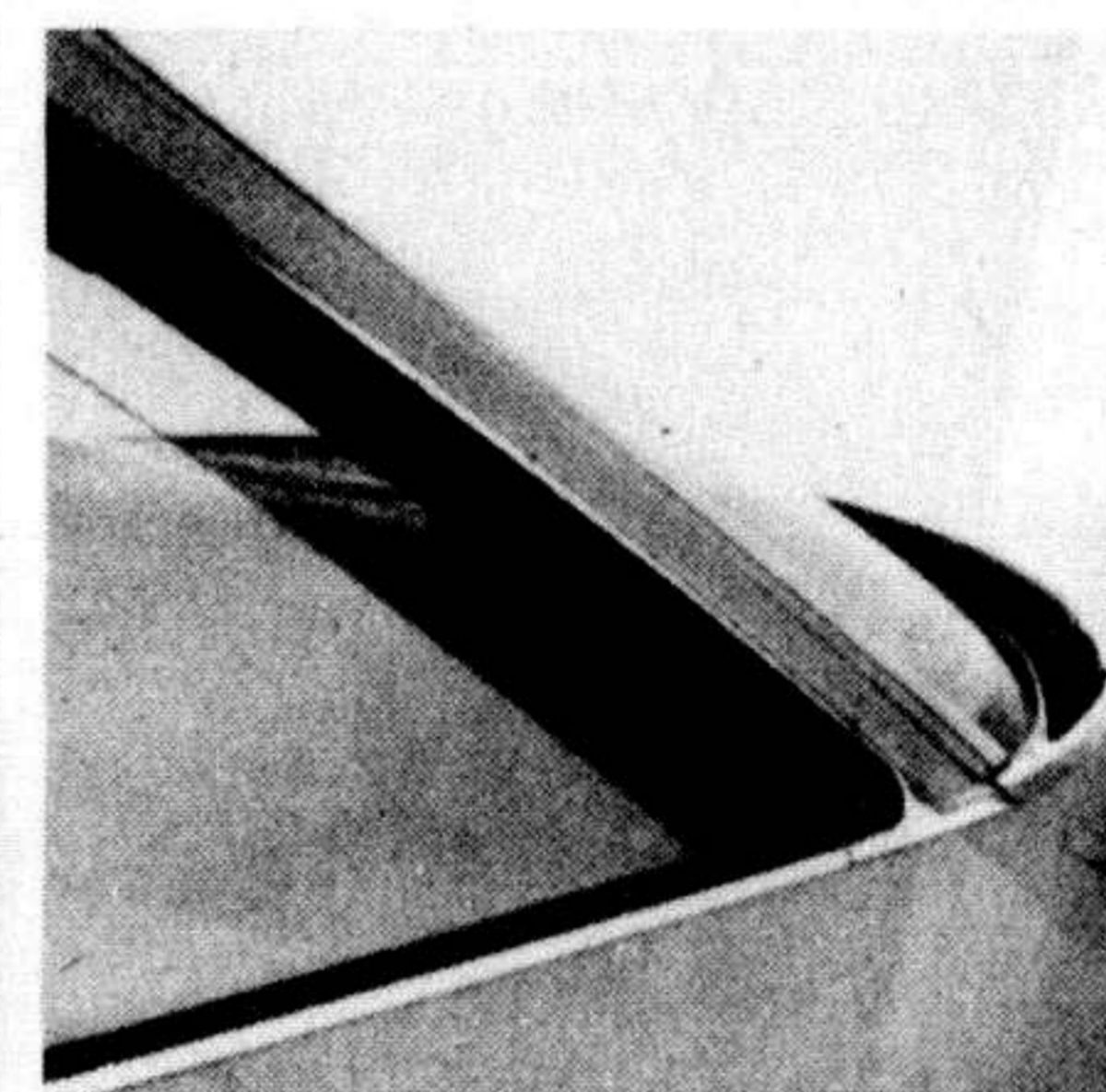
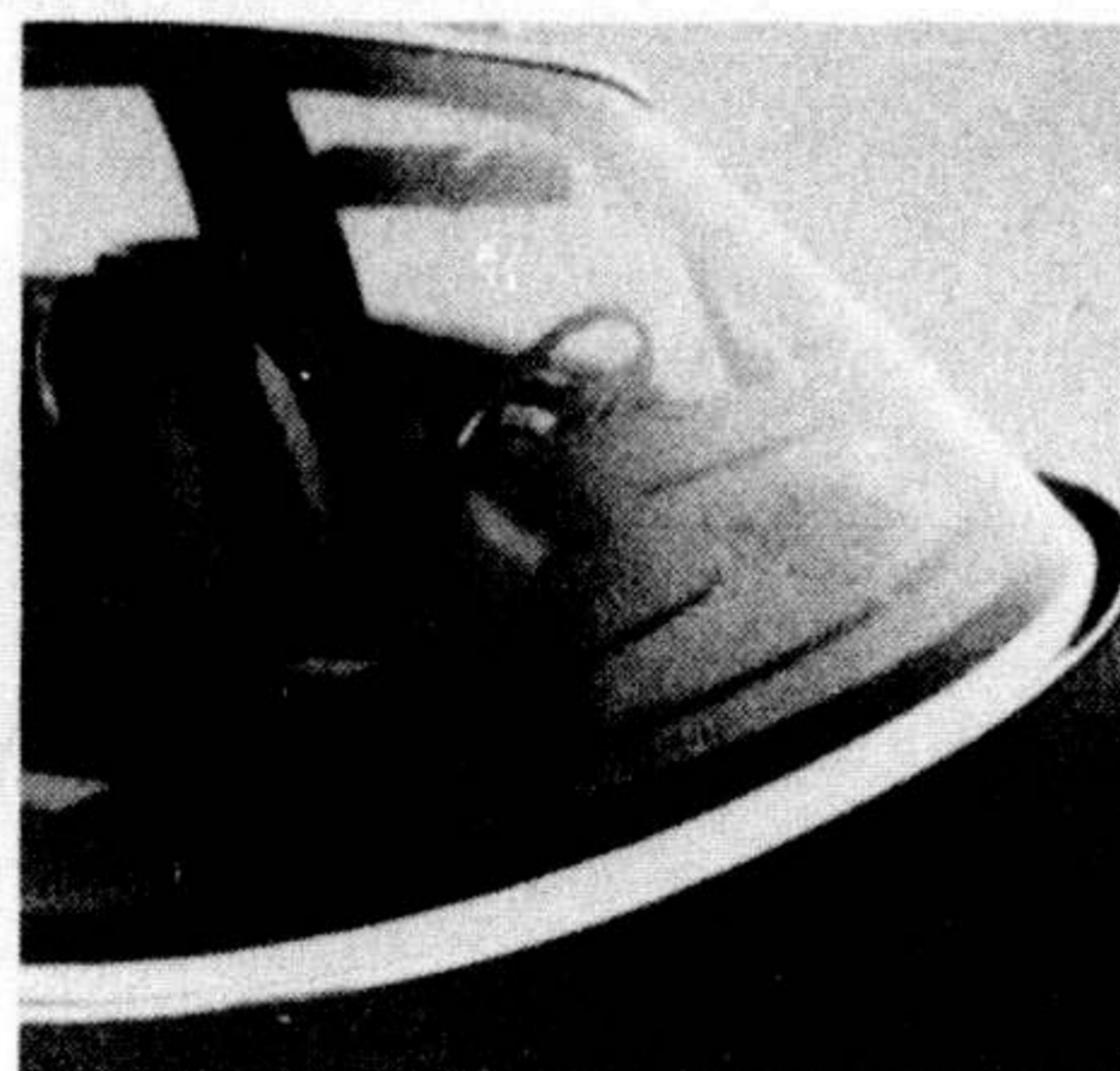
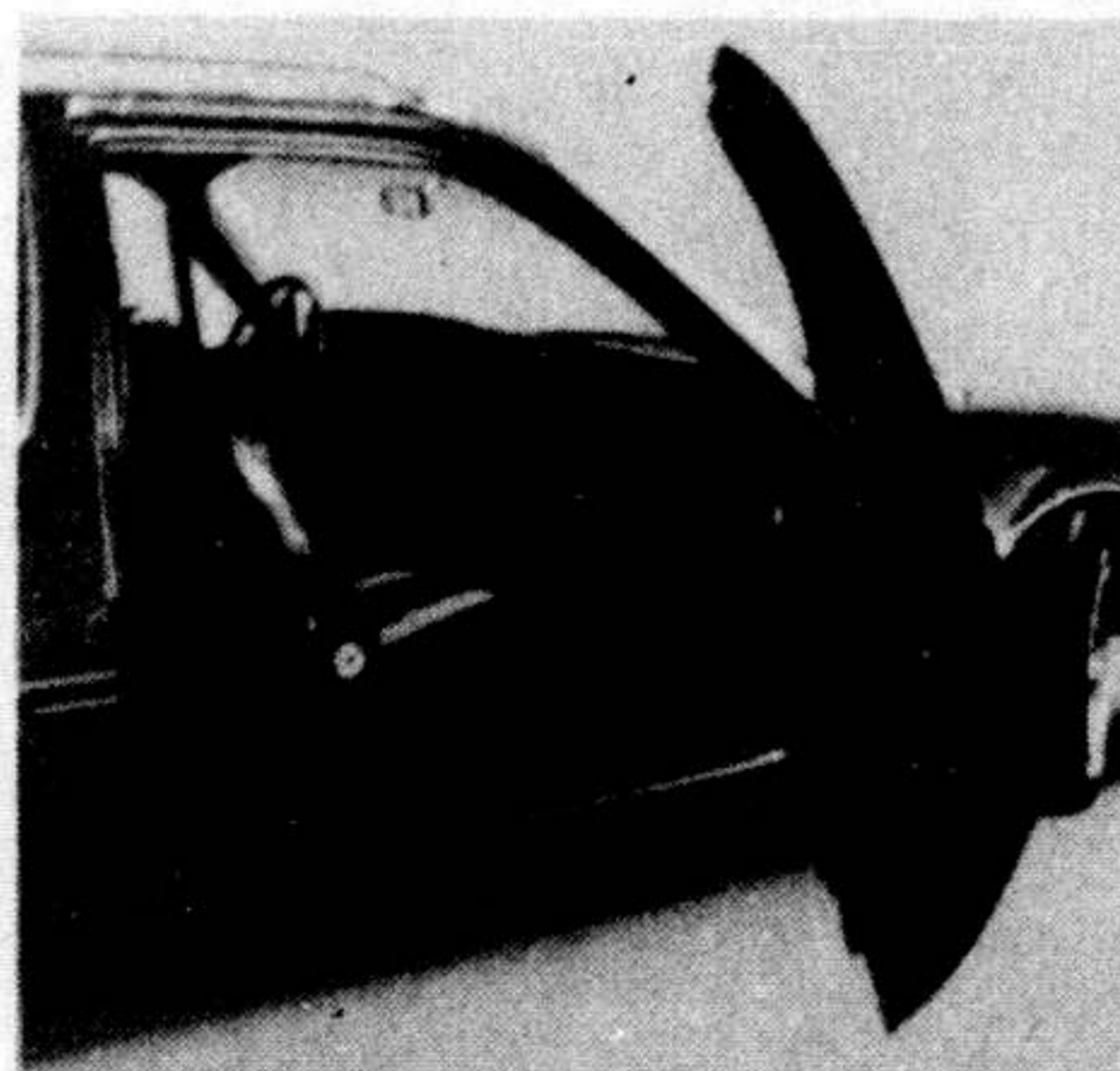
PACER

AMERICAN MOTORS TREND SETTER, A CAR DESIGNED AND ENGINEERED FOR THE 1980's . . . IS HERE NOW! WE THINK PACER IS THE GREATEST ENGINEERING MARVEL SINCE THE INVENTION OF THE AUTOMOBILE . . . ON DISPLAY MARCH 3

Come test drive this exciting new car



Pacer X



Pacer's foam-cushioned rear seat unlatches quickly, folds down easily to provide 29.6 cu. ft. of convenient cargo space. Hide cargo with an optional locking cover (not shown).

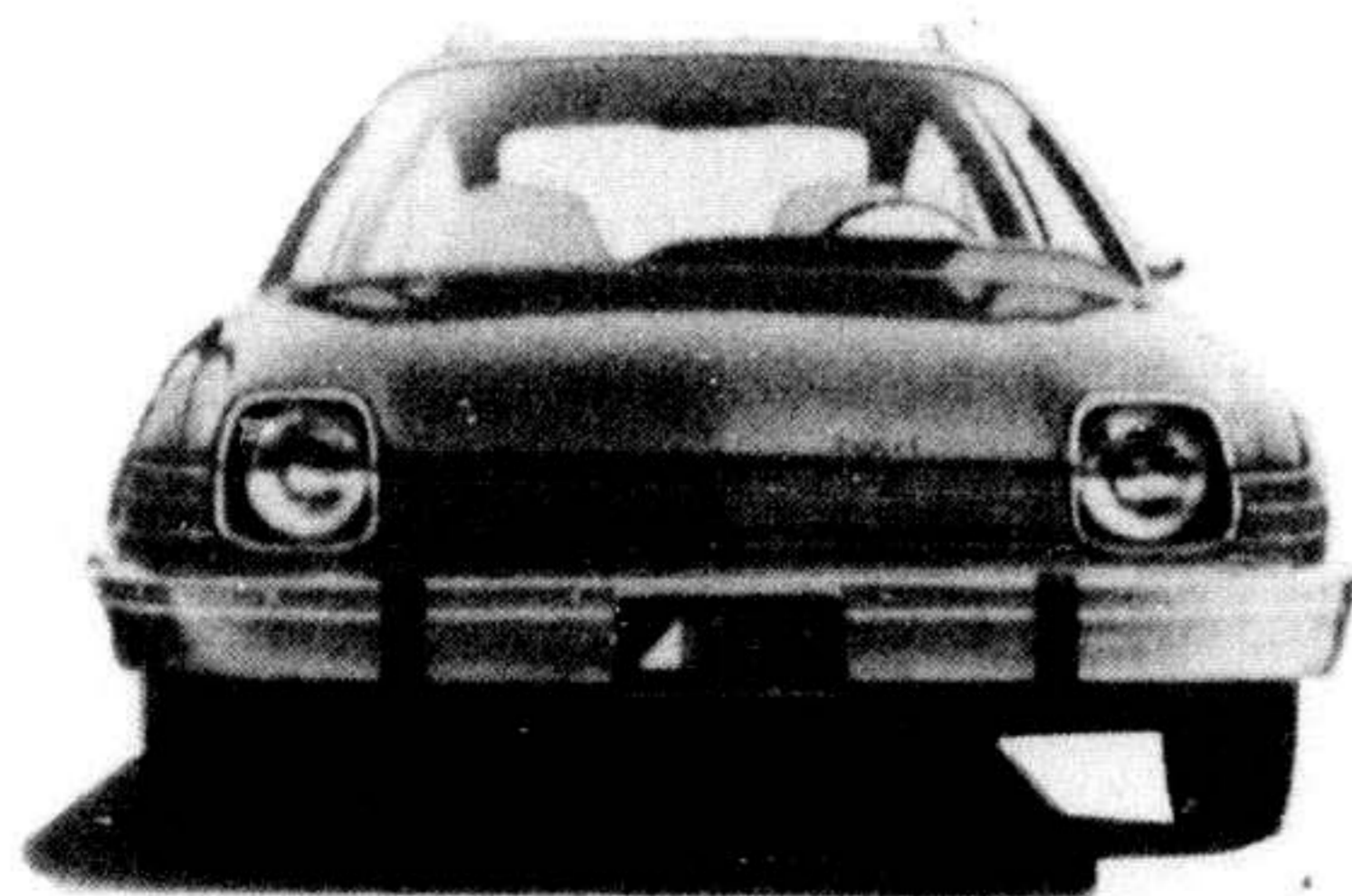
A wider door on the passenger side (nearly 4 inches wider than driver's side) makes getting in or out—front seat or especially the rear—easier than you've had it before.

Electric windshield wipers are completely hidden when not in use—nothing interferes with Pacer's remarkable forward visibility. Unique "wet-arm" washers assure a clean sweep.

Ventless side glass for clear, unobstructed visibility is standard in Pacer. However, if you'd like front vent windows they're yours as an option.

Pacer's cockpit-style instrument panel. Dials can be read at a glance, controls are close at hand. Panel is recessed on right side for more passenger knee and leg room. "D/L" panel (shown) and the "X" both feature luxury woodgrain look. The "X" includes a 3-spoke sports steering wheel.

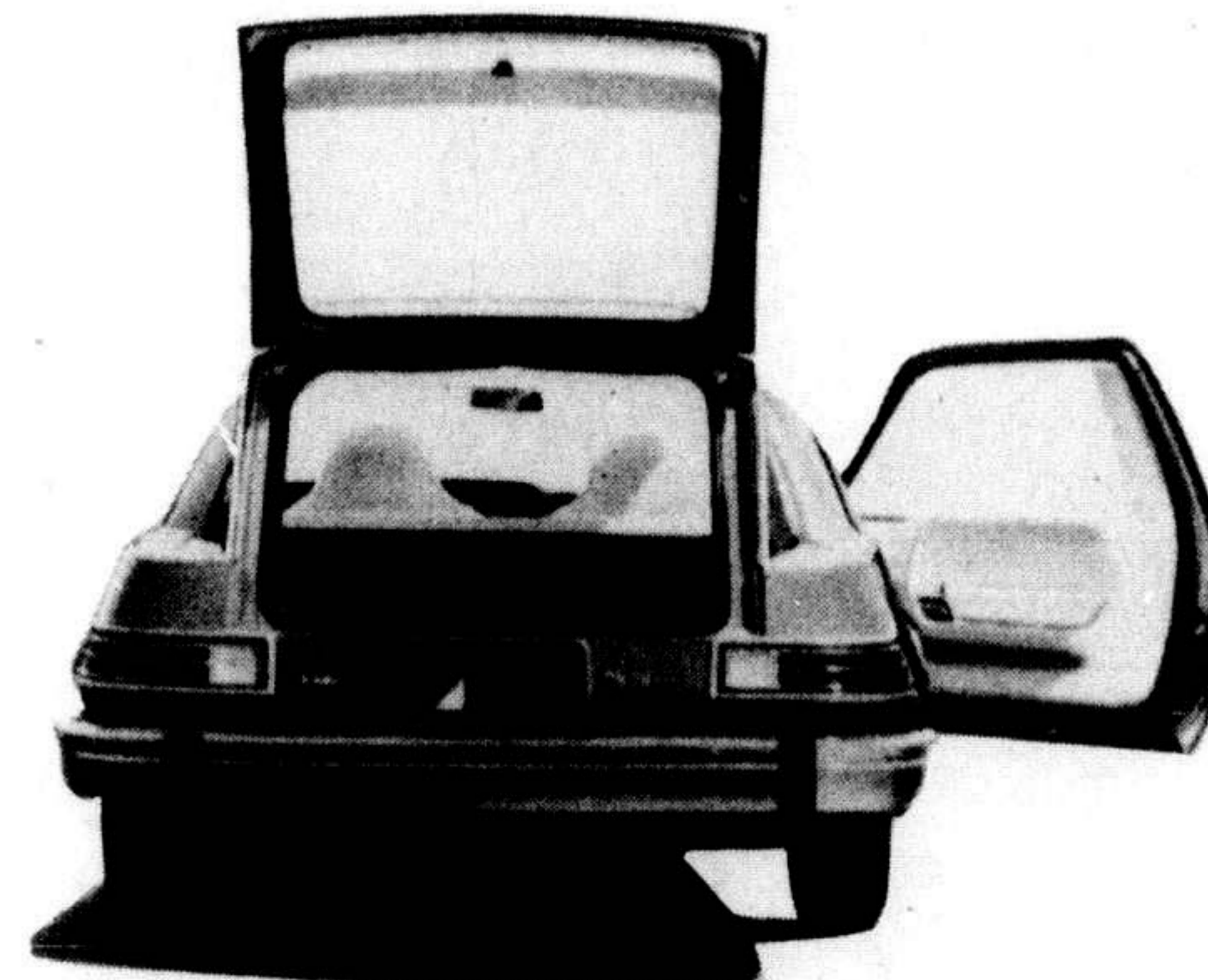
15 exterior color choices in "Luster-Guard" Acrylic Enamel



THE ALL NEW
PACER
THE WIDE
SMALL CAR

This amazing automobile probably has more options as standard and more extra options available than any automobile built

ON DISPLAY
MONDAY MARCH 3



AMC Pacer with AMC Buyer Protection Plan

CLEMENTS MOTORS

BRONTE ST.

JUST NORTH OF HOSPITAL

878-2328

OF
MILTON

THE ECONOMY EXPERTS

★ ALSO HOME OF '75 JEEP CHEROKEE