

# HUNT CHRYSLER'S MARATHON II SALES EVENT

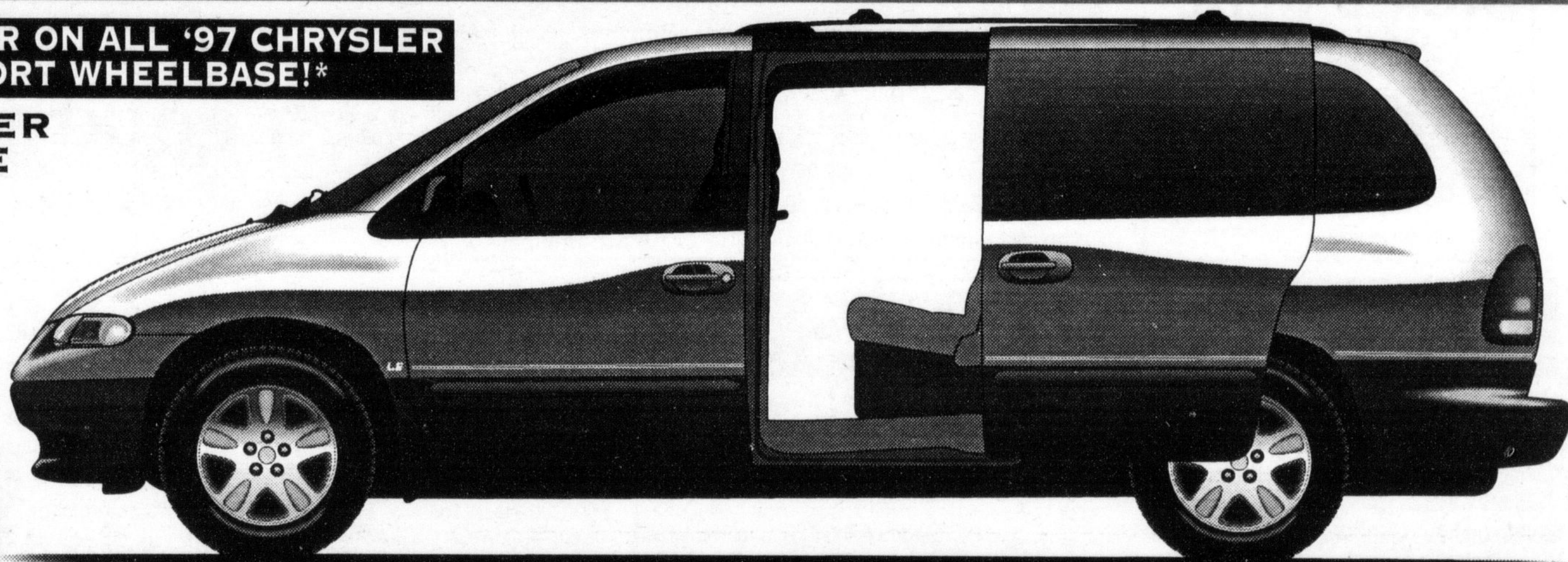
**NO CHARGE 2ND SLIDING DOOR ON ALL '97 CHRYSLER MINIVANS, LONG OR SHORT WHEELBASE!\***

**1997 PLYMOUTH VOYAGER 24T SHORT WHEELBASE**

- 3.0L V6 ENGINE
- AIR CONDITIONING
- AUTOMATIC TRANSMISSION
- DUAL AIR BAGS
- AM/FM STEREO
- EASY OUT ROLLER SEATS™

**\$19,988\***

**\$229†** A MONTH FOR 30 MONTHS  
PLUS \$2,343 DOWNPAYMENT OR EQUIVALENT TRADE, \$275 SECURITY DEPOSIT AND \$840 FREIGHT



**1997 PLYMOUTH NEON 22D**

- 2.0L 16 VALVE 132 HP ENGINE, MOST POWERFUL IN ITS CLASS.
- AIR CONDITIONING
- AUTOMATIC TRANSMISSION
- DUAL AIR BAGS
- AM/FM STEREO
- CENTRE CONSOLE
- PLUS 36 STANDARD FEATURES

**LEASE IT**

**\$299†** OR

A MONTH FOR 30 MONTHS WITH DOWNPAYMENT OF \$299

**OWN IT**

**0%\*\***

FINANCING ON ALL '97 NEONS

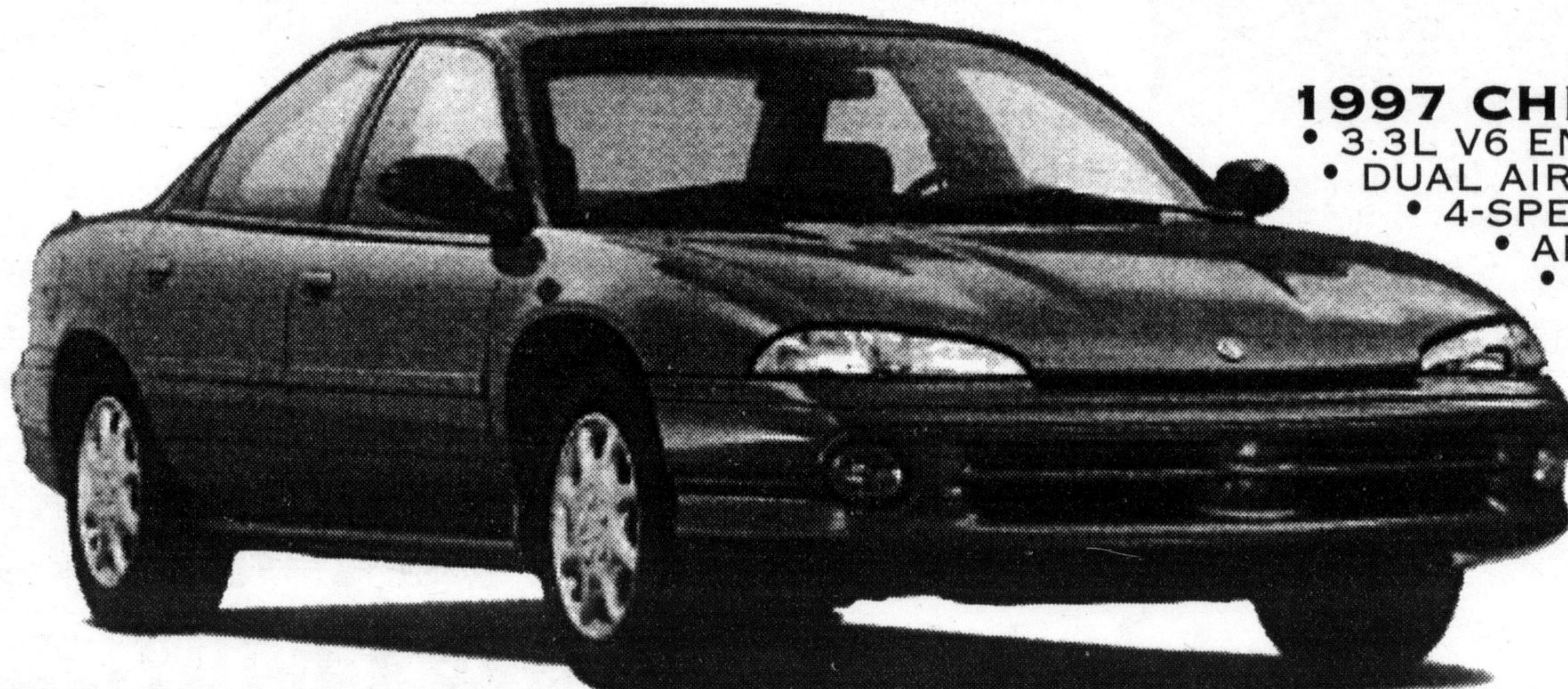


**1997 CHRYSLER INTREPID 22C**

- 3.3L V6 ENGINE • AIR CONDITIONING
- DUAL AIR BAGS • INTEGRAL FOG LAMPS
- 4-SPEED AUTOMATIC TRANSMISSION
- AM/FM STEREO CASSETTE
- POWER DOOR LOCKS/WINDOWS

**\$20,388\***

**\$259†** A MONTH FOR 30 MONTHS  
PLUS \$3,359 DOWNPAYMENT OR EQUIVALENT TRADE, AND \$790 FREIGHT



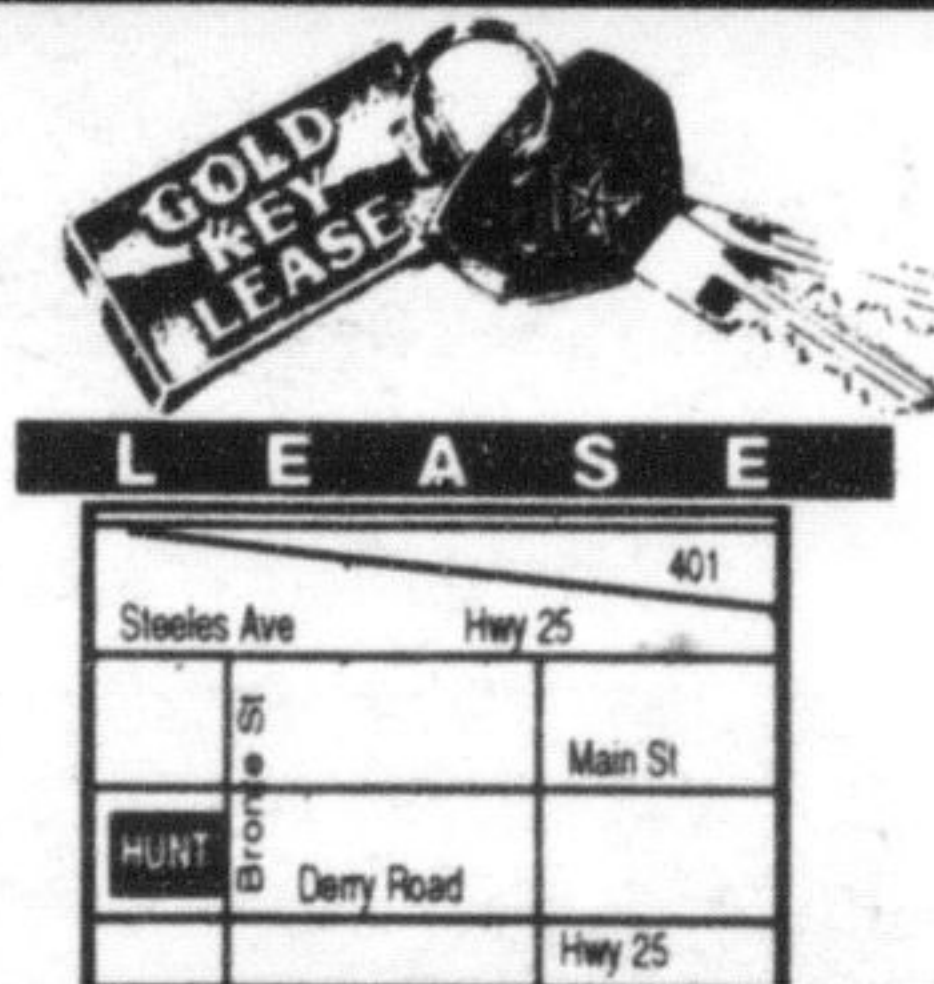
**We will not be knowingly undersold!**



**Hunt**  
Plymouth Chrysler Jeep & Eagle

500 Bronte Street, Milton 876-2580

DIAMOND CLUB  
ACHIEVEMENT  
AWARD



**CHRYSLER PLYMOUTH Eagle Dodge Trucks Jeep**

\*\*\* THESE ARE LIMITED TIME OFFERS AND APPLY TO RETAIL DELIVERIES OF 1997 MODELS FOR PERSONAL USE ONLY AND MAY NOT BE COMBINED WITH ANY OTHER OFFERS. DEALER TRADE MAY BE NECESSARY. SEE DEALER FOR COMPLETE DETAILS. \* PRICE INCLUDES RETAIL DELIVERY ALLOWANCE OF \$2,000 INTREPID, \$500 CARAVAN VOYAGER AND INCLUDES NO CHARGE 4TH DOOR ON ALL CHRYSLER MINIVANS (IN THOSE INSTANCES WHERE OPTIONAL SLIDING DOOR IS ALREADY INCLUDED IN PACKAGE OR FOR CUSTOMERS CHOOSING 3-DOOR VEHICLES, \$500 CREDIT AVAILABLE). \*\*0% (APPLIES TO ALL '97 NEONS) † BASED ON A 30 MONTH LEASE. TOTAL OBLIGATION IS \$9,269 NEON HIGHLINE, \$10,328 CARAVAN VOYAGER, \$12,219 INTREPID. FREE KILOMETERS ARE LIMITED TO 51,000. CHARGE OF \$0.90/KM FOR EXCESS KILOMETERS. SUBJECT TO APPROVAL BY CHRYSLER CREDIT CANADA LTD. THESE ARE CLOSED END LEASES WITH NO BUYBACK REQUIREMENT. \* † PRICE/LEASE FOR VEHICLES EQUIPPED AS DESCRIBED. PRICE/LEASE EXCLUDES FREIGHT \$840 CARAVAN VOYAGER \$790 INTREPID, LICENCE, INSURANCE, REGISTRATION AND TAXES. NEON HIGHLINE LEASE INCLUDES FREIGHT \$830, SECURITY DEPOSIT AND TAXES.