



# Krantz says proposal could benefit Milton

• From **RELUCTANT** on page one  
Oakville Councillor Kevin Flynn was against the plan, complaining that it represents a central planning approach to municipal government.  
"Look at old Moscow. This GSTB thing is central planning gone wacky."

Halton Chair Joyce Savoline said Halton has been in the Greater Toronto Area since the province began considering it one economic unit, as early as the 1950s. She added nobody at that time knew what where being in the GTA might lead.  
Milton Mayor Gord Krantz tried to rally

Halton councillors to support the formation of the GSTB.  
"Milton is a prime example of why the board should exist," he said before the meeting. "Halton has not been able to take care of one of its constituent members (in providing water services for Milton).

Milton getting water from Peel is a prime example of why the board should work."  
Burlington Mayor Walter Mulkeiwich also asked for support of the GSTB but for different reasons.  
Quoting Municipal Affairs Minister Al Leach, Mr. Mulkeiwich said the board would eventually become a tier of government, pushing out one of the existing levels.

He suggested support for the GSTB was the best protection for the local level of government because it gives municipalities the opportunity to make servicing deals with neighbouring towns and cities.

Mr. Mulkeiwich said the alternative is an amalgamation along regional lines which would lead to a City of Halton. He added it is possible neither local municipalities nor Halton itself would survive changes in government structure.

Councillors rejected Mr. Mulkeiwich's vision, saying that its conclusions rest on a large number of assumptions.

"Mr. Mulkeiwich's position is based on highly speculative assumptions," said Burlington Councillor Rob MacIsaac after the meeting. "People here don't want to cede jurisdiction to a Toronto government and they don't want an extra level of government."

Council agreed it is important to be at the GTSB negotiating table in order to protect Halton's interests.

Oakville Mayor Ann Mulvale said Halton's position is merely a comment on a proposal. She said the provincial government has changed its mind on some issues and it is important for Halton to make its views known if it wants to effect change.

Ms Mulvale said it may be that Halton can opt into the GSTB at whatever level suits local politicians.

"It might be hard to say emotionally but it is not hard to say intellectually . . . we are part of the Greater Toronto Area," she noted. "The public has no feeling for this region. That's reality."

Ms Mulvale said if the province wants an evolution of the GTSB into a level of government then it should opt for a model which will provide equal representation to all municipalities regardless of their size. The current proposal by former civil servant Milt Farrow would operate on a representation by population basis with a 28 member board, 14 of them coming from Metro Toronto.

Several councillors were adamant they would not support the GTSB because it is a new level of government.

"Mr. Farrow finally admitted it was a level of government and would act as a level of government," said Burlington Councillor Ralph Scholtens, who stood firmly behind a City of Burlington survey that said joining Toronto was at the bottom of his constituents' priority list.

"If you're going to try to negotiate what makes you think that your landfill won't become a negotiation chip?" he asked, in reference to what he sees as the potential risk of having Toronto bargain to use the Halton landfill in Milton.

Some councillors were looking ahead to how government may look after the GTSB evolves into a level of government.

Milton's Colin Best said many of the same arguments against the GTSB were used when Toronto amalgamated several nearby towns such as Weston, Mimico, and Leaside.

Using Seattle, Washington as an example, Mr. Mulkeiwich said the world's economy is being driven by effective and unified city-states rather than national governments.

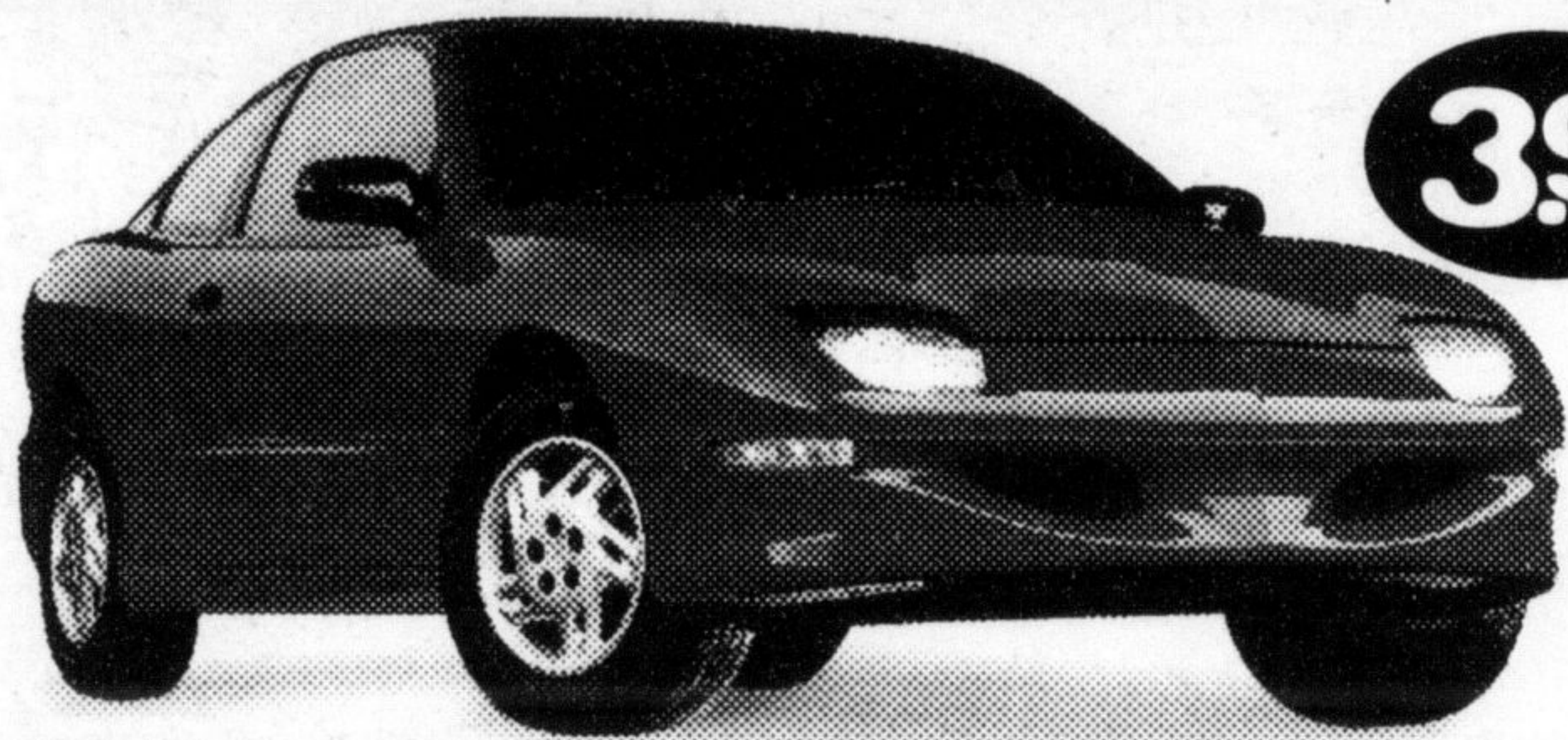
PONTIAC/BUICK/GMC'S 3<sup>rd</sup> ANNUAL

# CANADA-WIDE CLEARANCE

Great prices and 3.9%\*\* financing on most '97 models (purchase only).

**3.9%\*\***

## '97 Pontiac Sunfire Coupe



**3.9%** Purchase **\$15,888\*** SMARTLEASE **\$198** per month/36 months plus a down payment of \$2,000 or equivalent trade, security deposit \$300 and freight \$620.

**Sporty fun for life on the go**  
2.2 litre engine, 5-speed transmission, air conditioning, rear spoiler, dual air bags, 4-wheel ABS

## '97 Pontiac Grand Am Sedan



**3.9%** Purchase **\$17,988\*** SMARTLEASE **\$228** per month/36 months plus a down payment of \$3,420 or equivalent trade, security deposit \$300 and freight \$620.

**Built for Drivers**  
155 HP 3.1 litre SFI V6 engine, 4-speed automatic transmission with enhanced traction system, 4-wheel ABS, air conditioning, power door locks, PASSLock® theft deterrent system, rear door child safety locks

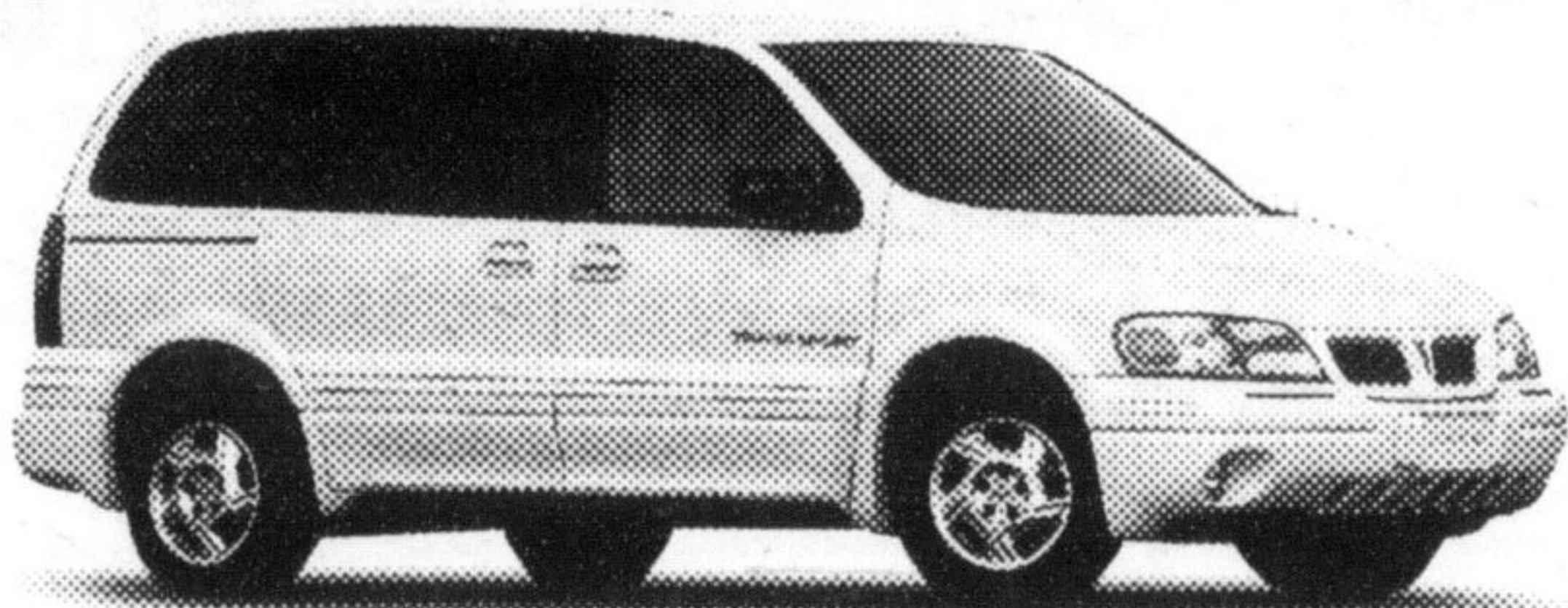
## '97 GMC Sierra Regular Cab 2WD



**3.9%** Purchase **\$19,988\*** SMARTLEASE **\$198** per month/36 months plus a down payment of \$1,800 or equivalent trade, security deposit \$300 and freight \$895.

**365 days a year**  
200 HP Vortec 4300 SFI V6 engine, 4-speed automatic transmission, cloth seats, air conditioning, 8 ft. cargo box, two-tier loading, deluxe chrome grille

## '97 Pontiac Trans Sport



Purchase **\$22,888\*** SMARTLEASE **\$228** per month/36 months plus a down payment of \$3,720 or equivalent trade, security deposit \$300 and freight \$840.

**Rugged and sporty**  
180 HP 3400 engine, tinted glass, AM/FM cassette, air conditioning, pollen filter, child safety locks on sliding side door

## '97 GMC Jimmy



**3.9%** Purchase **\$31,888\*** SMARTLEASE **\$298** per month/36 months plus a down payment of \$3,998 or equivalent trade, security deposit \$350 and freight \$695.

**Conquer the world you drive in**  
190 HP Vortec 4.3 litre SFI V6 engine, automatic transmission, power windows/locks/mirrors, air conditioning, remote keyless entry, 6-way power driver's seat, overhead console



Get what you want from your Pontiac Performance Team.



You should know this: \*\*Financing on approved GMAC credit only. Example \$10,000 at 3.9% APR, the monthly is \$225.33 for 48 months. Cost of borrowing is \$815.84. Total obligation is \$10,815.84. Down payment may be required. †Based on a 36 month lease for vehicles equipped as described. Annual kilometre limit 20,000 km. \$0.08 per excess kilometre. Other lease terms available. \*\*\*Price/lease for vehicles equipped as described. Freight, as indicated, licence, taxes and insurance not included. Dealer may sell/lease for less. Offer applies in Central Ontario to qualified retail customers only. Limited time offers. Not all vehicles available at all dealers. Offers may not be combined or used with other offers. OAC. See dealer for conditions and details. www.gmcanada.com is a trademark of General Motors Corporation.