

of Commerce

9T 2Y3 878-0581
interhop.net

NEWS

Milton Chamber of Commerce

Partnership in promoting,
enhancing the well being of
and the community of Milton.

Thank you for the generosity of the following businesses who donated to the tournament held at Granite Ridge Golf Club on June 24th. Thank you again.

HOLE SPONSORS

- Bank of Montreal
- Bergsma's Paint & Wallpaper
- Bermis Inc.
- Bill's Autobody
- Bruce Hood Travel
- Discount Car & Truck Rental
- Halton Automotive & Industrial Supply
- Halton Community Credit Union
- Halton Pools n' Spas
- Harry Snoek Ltd.
- Hutchinson Thompson
- Henderson & Mott
- Kelly Services
- Kwik Kopy Printing
- M & M Meat Shops
- Mercer Hildebrand & Zehr
- Milton Graphics
- Milton Canadian Champion
- Miltown Computer Services
- Miltowne Insurance Agency
- Ontario Renaissance Festival
- Royal Bank—
Halton Business Banking
- Royal LePage Real Estate
- SKD Company
- Standard Auto Glass
- TD Bank/TD Evergreen
- Union Gas
- Wallace Pontiac Buick Cadillac
- Waltzing Weasel

NEW MEMBERS

Edward or Rod Core - Owners
CORE'S WELL DRILLING & PUMP SERVICE
264 Bronte Street S. Unit #10,
Milton, ON L9T 5A3
Phone 878-4515 Fax 878-5341
Core's Well Drilling & Pump Service specializes in water well drilling and installation of water pumps, and purification systems for rural customers.

Linda & Nelson Shaw - Owners
HALTON SOD
9308 #10 Sideroad,
Milton, ON L9T 2X9
Phone 878-1011 Fax 878-6099
e-mail hltnsod@aztec-net.com
Linda & Nelson Shaw have been in business for 7 years. They grow sod for commercial and residential use plus they lay the sod. The Shaw's have been residents of Milton for 21 years.

A. Beatrice Cross - Manager
WINE RACK
55 Ontario Street S., Milton Mall
Milton, ON L9T 2M3
Phone 878-4919
The Wine Rack is a retail wine store featuring Ontario wines from the Niagara Region. In addition, gift items are available.

Roman Jirasek - Owner/Operator
D & S SIGNS
295 Alliance Rd.,
Milton, ON L0T 4W8
Phone 878-7769 Fax 878-8731
D & S Signs was established in 1979 and is a full service sign company providing the full range of signs from vinyl graphics to illuminated fascia signs to 64 colour LED electronic moving message display signs. We manufacture and install all the above types of signs.

REGIONAL REPORT

by COUNCILLOR COLIN BEST

For interest to Chamber members, a number of activities are occurring at the Region during the summer. On July 9th Regional Council will be approving Milton's new Official Plan setting the stage for a new Zoning By-law for the Town, and the preparation for new urban secondary plans around the current urban area.

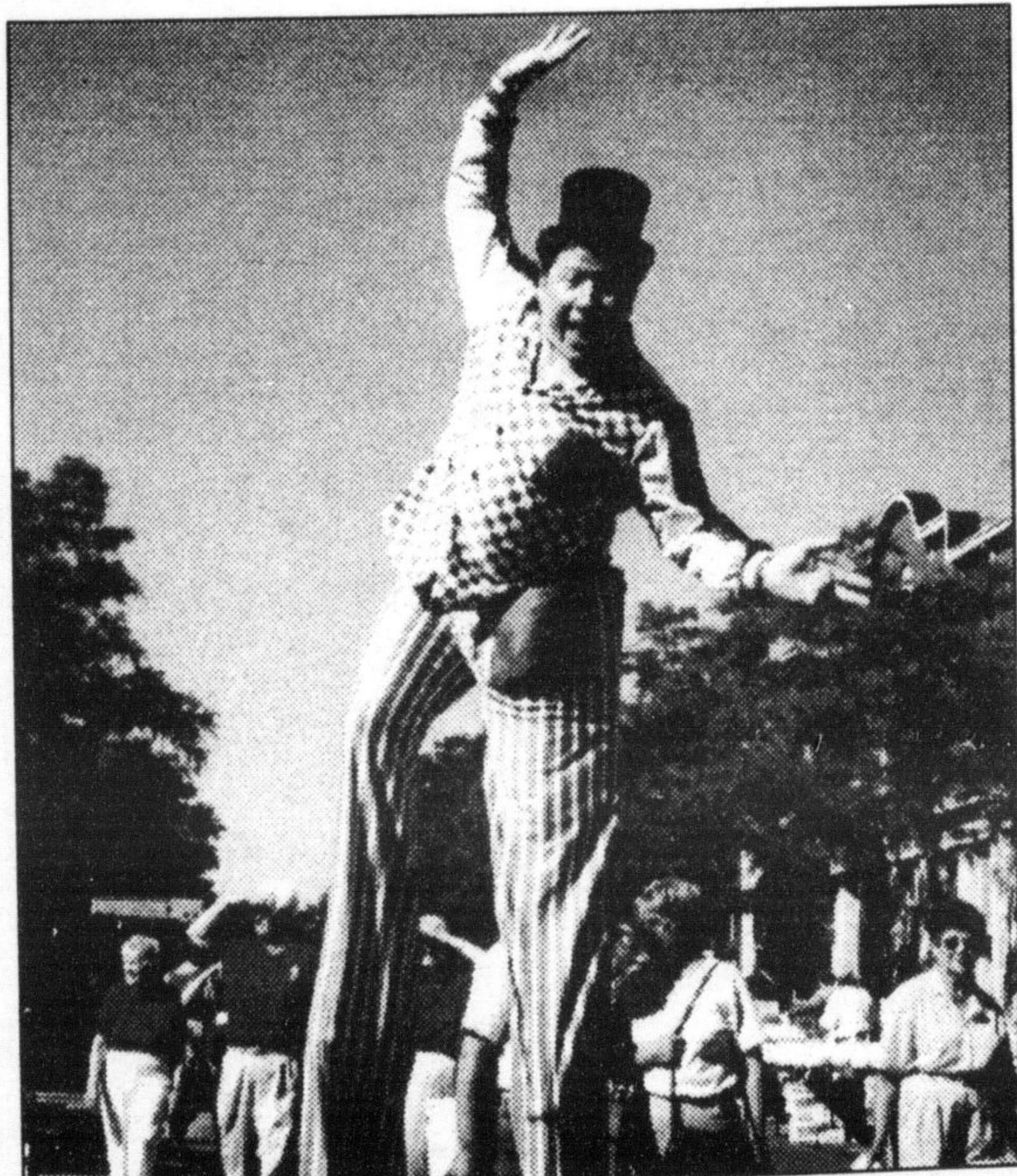
If you have any questions or want to be involved in groups considered Commercial, Residential and Industrial zoning please call Bill Mann of the Town Planning Dept. at 878-7211.

Also the Region and Town will be responding to the Greater Toronto Servicing Board proposals put forward by Milt Farrow by July 31st for Provincial consideration and possible adoption by January 1st, 1998.

Both the Region and all area municipalities are participating in an Area Services Review, a detailed study on how all area governments can reduce costs and improve services for all taxpayers, if you have any comments or ideas to improve both Regional and Town services call me at 878-3623.

By the end of September the Regional C.A.O. Barry Malmsten will be bringing recommendations on servicing for the Milton area including the Peel connection and other options to allow Milton a balanced growth strategy of residential, commercial and industrial development in keeping with public concerns for a better community not just a bigger one.

In the meantime have an enjoyable and prosperous summer!



DADDY LONGLEGS entertains at the 25th Farmers' Market Anniversary Party.

We've Got Everybody Talking!

UNLIMITED CALLING to Toronto & Mississauga
\$13.99 Per Month

EXTENDED SERVICE
\$25.99 Per Month

FREE OSHAWA WHITBY NEWMARKET and more... CALL FOR DETAILS

Unbelievable! Save Money!
Make long distance calls 24 hours a day - not just during discount periods. You can call anywhere in Ontario - Flat Rate!

Only **10¢** Per. Min.

\$9.99 100 min/month (Add 1 minute 15¢ ea.)

\$19.99 200 min/month (Add 1 minute 15¢ ea.)

\$39.99 400 min/month (Add 1 minute 10¢ ea.)

Telehop™
Your Local Full Service Communications Company
155 Main St. E., Milton
(905) 878-3918

INTERNET ACCESS from \$9.99 Per Month

- Fast, Easy Hook-Up
- High Speed Service
- Reliable, Accessible Support
- No Busy Signals!
- Ontario's Widest Network

TAKE ONE GIANT LEAP IN THE RIGHT DIRECTION

INTERNOP
LAUNCHING YOUR INTERNET FUTURE

Superior Propane Inc.

130 Thompson Rd., Milton

878-2318

SERVICE - SAVINGS - SELECTION

HELP WANTED! JA ADVISOR RECRUITMENT DRIVE

Volunteer and brush up on your own professional skills!
Junior Achievement is looking for Advisors for our Company program. You will help high school students to own and operate a business. This is a learn-by-doing program that runs weekday evenings September through April. Business background preferred, no experience necessary, training provided. Please consider this opportunity to support the entrepreneurial youth of our community. CONTACT MIKE SHEPHERD AT 875-8105 OR JANET DELINE AT 878-5029

KELLY SERVICES Delivering Quality & Service

The largest Service Industry Company in Canada with ISO 9000 Certification. At Kelly Services we provide our clients with superior service in the area of office, technical, light industrial and Kelly Select™. Always delivering the highest standards. Call us today! Oakville 842-4400 Kelly Services (Canada) Ltd.

H.J.M. Insurance Brokers (Ontario) Inc.
Aaron MacFarlane • Ken Armstrong
Doug Peddie

"Planning Today for Tomorrow"
Milton Chamber Auto & Home Group Representative
245 Commercial St. Milton, Ont. L9T 2J3
Bus: (905) 876-4607
Fax: (905) 876-1001

Royal Insurance
Our expertise is your best policy.

Bob Lee: (905) 878-5786
Roger Lauzon: (905) 878-7217

Miltowne Insurance Agency Ltd.
MILTON CHAMBER OF COMMERCE GROUP LIFE & HEALTH PLAN
features "ASSURE CARD"
Life Insurance • Long & Short Term Disability
Accidental Death & Dismemberment • Dental Plan
Extended Health Care • Dependent Life
Available to all member businesses with as few as one person
Computerized quotes now available
Call today for an interview to discuss your needs.