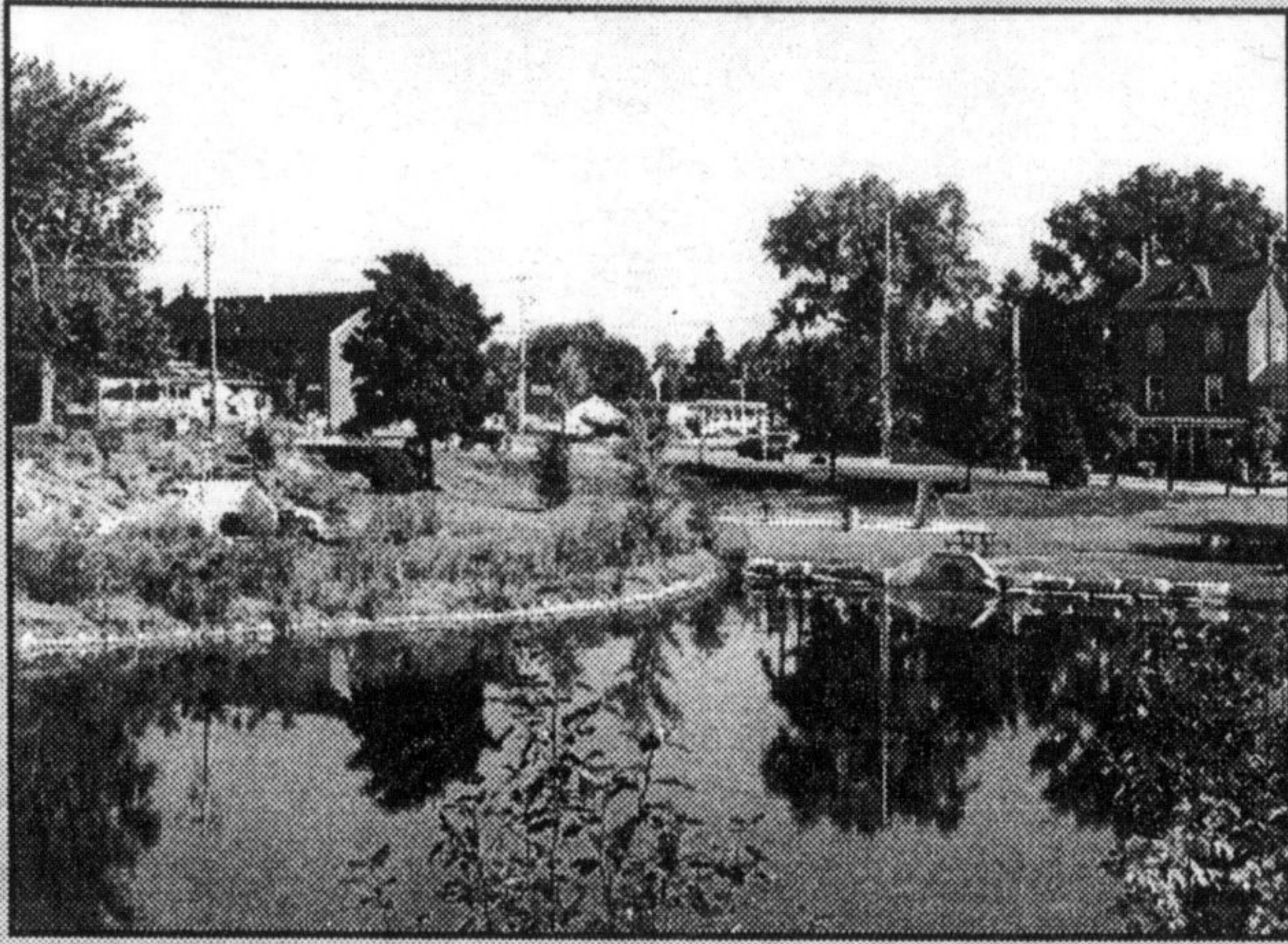
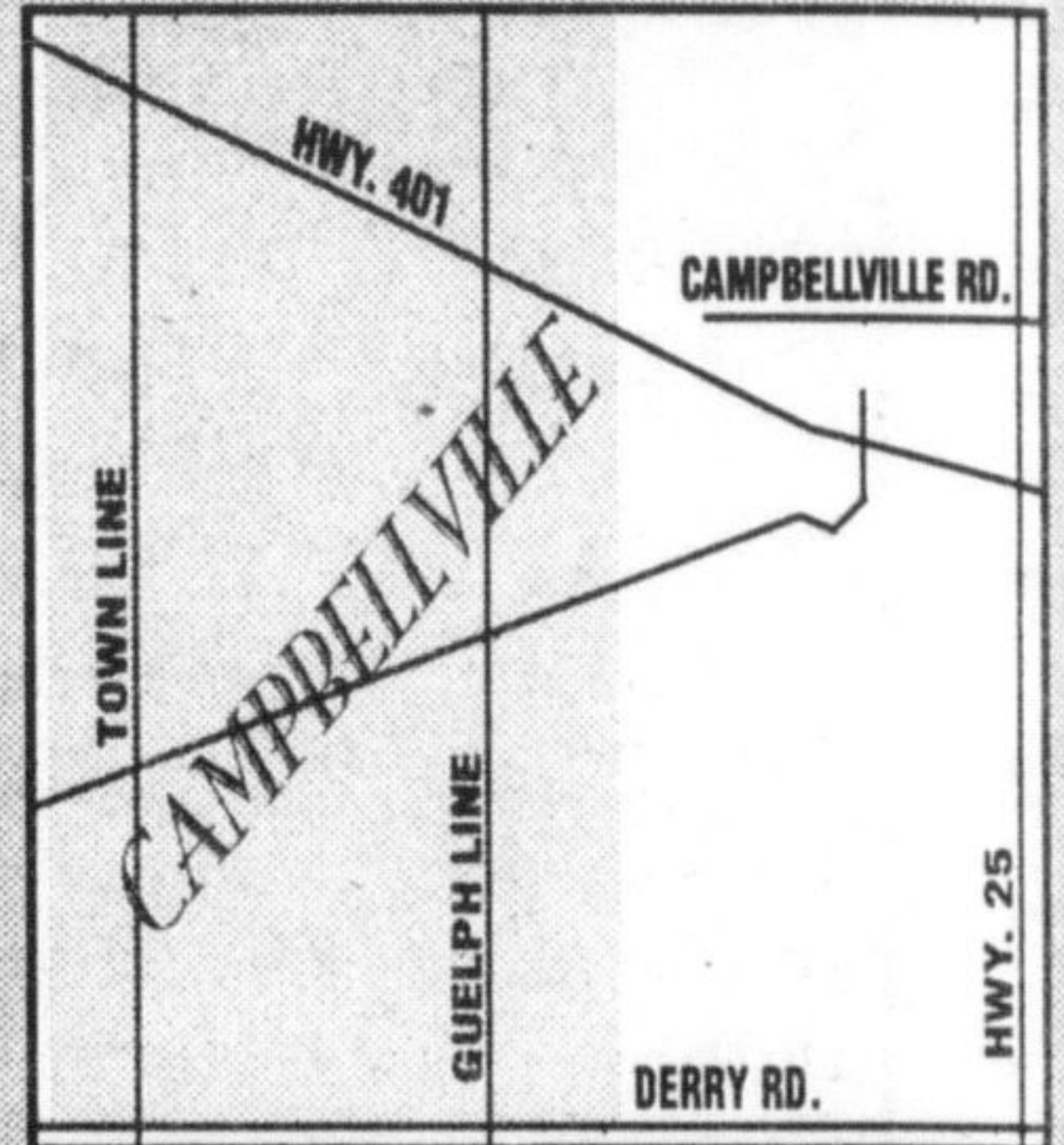


# Discover **JUST 10 MINUTES AWAY** CAMPBELLVILLE



**T**he Campbellville area within the Town of Milton extends north and south of Highway 401 at Guelph Line and encompasses the historic township of Nassagaweya and the hamlets of Brookville, Moffat and Campbellville.

**E**veryone will enjoy the antique, craft and specialty shops, art galleries and many service businesses. Inns, campgrounds, bed and breakfasts, restaurants and tea rooms all invite you to spend a day to discover Campbellville.



## Welcome to Nadean Services

**"HOT, HOT, HOT"**  
Have your Honeymoon at  
*Sandals or Beaches*  
and receive  
**FREE** a 20 piece setting of  
Royal Doulton China  
*"Love is all you need"*  
**MANY OTHER SPECIALS!**  
*It's worth the call to Campbellville!*  
Inquire about our other vacation packages  
**C'Ville Travel**  
35 Crawford Cres., Campbellville 905-854-2033/34

**NADEAN SERVICES**  
**Scenic, Western Trail Riding**

- Guided rides (flexible times and durations)
- Day Camp
- Unescorted rides also available

Call for reservations  
**854-3300**  
Your hosts: Nancy & Dean

**N**ot so far from you, there is a beautiful, scenic countryside. A pleasant, enjoyable atmosphere, people... and horses!

**N**estled in this area, just outside of Campbellville, is the area's newest trail-riding business, **NADEAN SERVICES**.

**T**hanks to this new venture, you can now enjoy the wonderful outdoors while on horse-back.

**N**adean services has much to offer, including

guided trail riding and unescorted rides for those more experienced riders.

**N**adean Services provides trail riding parties, such as birthday parties, accommodating up to 7 people, for rides lasting 1 to 3 hours. Day camp for kids is also available during the summer months. What a great idea!

**R**iding times are flexible. Safety gear is available. For further information, or to book your ride, please give Nancy or Dean a call at (905) 854-3300.

Visit **HISTORIC Mohawk Inn**  
*more than a great overnite stay*

7 Days a Week **FULL SERVICE DINING ROOM** 7 Days a Week  
MON. - SAT. from 7:00 am  
SUN. from 8:00 am  
*Serving Breakfast, Lunch & Dinner*

401 & Guelph Line, Milton/Campbellville  
**(905)854-2277**  
email:alexso@inforamp.net

**THE ICE HOUSE**  
LICENSED Restaurant

19 Main St., N., Campbellville

- All Day Breakfast
- Homemade Pastries & Pies
- Fresh Pasta Daily
- Fully Licensed Patio
- Full Take-Out Menu
- Lunch & Dinner Specials
- Children's Menu & Friendly Service!

**HOURS** Mon.- Fri. 7:00 am - 9:00 pm  
Sat. & Sun 8:00 am - 9:00 pm  
**(905) 854-0997**

*We've extended our menu! Bigger & better! Lots more variety!*

**ROBIN'S**  
In the of Campbellville

For All Your Hair Care Needs

Call now to inquire about Robin's *New* Summer Hours!  
**854-0376**  
70 Main St. S., Campbellville

*"There are the Restaurants you go to—and then there are THOSE YOU GO BACK TO!"*

Open Daily 8:30 am - 5:00 pm  
Dinners Thurs. to Sunday 5:00 pm - 10:00 pm

**Country Laine Café**  
43 Main St. South  
Campbellville  
**(905) 854-1884**

*Your Host eLaine* • Breakfast • Lunch • Dinner • Take-out *Lic. L.L.B.O.*

**Fine Dining in a cozy, casual atmosphere.**

**eLaine** from famous Lainey's of Port Credit has relocated to Campbellville. Her 13 years of gourmet experience (and her great new chef "Kelly"), will offer you excellent, creative dishes and daily specials at reasonable prices, all freshly prepared.

Afternoon Teas - Fabulous Desserts - Patio now open