

**ZAK'S PHARMACY**  
Milton's Independent Pharmacy

- Free Delivery
- 10% Seniors Discount
- All Drug Plans Accepted
- Written Drug Information Available

**"At Zak's We Care About Your Health"**  
86 Main St. E. 875-2424

# Weekend Champion



**KAREN'S FLOWER SHOP**  
"Celebrating 30 years in business"  
487 Laurier Ave.,  
878-2881

A Metroland Community Newspaper

Vol. 13 No. 13

Friday, June 27, 1997

36 Pages

75¢ (GST included)

## Garden display Sunday

The Milton and District Horticultural Society has carefully chosen 13 of the area's most beautiful gardens for its annual Garden Tour Sunday, June 29, an organization spokesperson said.

"The diversity of these gardens is the overall impression one gets," said group member Kryz Good.

"Represented are relatively small town lots gradually eliminating the lawn and filled with areas of coloured stone and rock with complimentary plants."

English cottage and escarpment gardens hidden behind hedges and fences can be seen in full view in the tour, which runs from noon to 5 p.m., she said.

"The gardeners on the tour are quite excited about welcoming visitors and sharing some of their secrets."

Participants receive a map and can visit the gardens in any order at their own pace. Rides are available.

Tickets, which cost \$5 each or \$8 per family, can be obtained on the day of the tour at the Town Hall gardens or prior to the event at Spice O' Life on Main Street.

Proceeds will be used to beautify Milton.



Kim Kippax is asking for co-operation from the community in coping with her daughter Dawn's severe allergy to pesticides.

Photo by GRAHAM PAINE

## Mother asks for help to protect a frail daughter

The mother of a four-year-old girl with life-threatening allergies is asking for understanding and consideration from area residents during the spring and summer months.

By KAREN SMITH  
*The Champion*

Kim Kippax, 35, of the townhouse complex at 154 Bronte St. S. is pleading with residents of surrounding homes to contact her before spraying pesticides on their lawns.

Her daughter Dawn, who suffers from anaphylaxis, has a severe allergic reaction to the weed-killing chemicals and could possibly die without immediate medical attention.

She could suffer a reaction by simply breathing in airborne chemicals, Ms Kippax said.

"I don't expect people not to spray, but just let me know so I can move my daughter somewhere else for a few days," said the concerned mother.

Dawn has anaphylactic reactions, a life-threatening form of allergic reactions, from a long list of foods, substances and chemicals.

While Ms Kippax can control what

Dawn eats and what substances she comes into contact with in her own home, she can't stop pesticide chemicals from spreading in the air through her front window.

Dr. Shawn Kao, a Bramalea pediatrician whose patients are mostly allergy sufferers, confirmed that Dawn has a potential to suffer an anaphylactic shock to chemicals in pesticides and added that the little girl is the most serious case of the disorder he has ever seen.

He noted that Dawn has severe asthma and is allergic to so many things that the cause is hard to diagnose.

"She's a bit of a medical mystery," he said.

From eating eggs, peanuts or a variety of vegetables to coming into contact with latex and adhesive tape, Dawn is restricted in her mobility in life.

• Continued on page 5

## Halton stays in chlorine fray

By BRAD REAUME  
*The Champion*

Halton has returned to the front lines and will fight another day.

An attempt to remove the region from any further wrangling over chlorine in Milton's water supply was defeated 12-8 Wednesday by full regional council.

"I'm surprised but pleased," said Milton Mayor Gord Krantz. "I was concerned after the position (to take no further action) received solid backing at committee. I told Joyce (Savoline) I was not very pleased."

Milton representatives considered the position, championed by Halton Chair Joyce Savoline, as a needless negative in their ongoing battle with provincial officials to remove the chlorine. They explained they knew the region had done everything in its power to have the chlorine taken out but did not want Halton to abandon the fight.

"The timing is wrong for this type of motion," said Mr. Krantz, pointing to political pressure being applied by



"The region is trying to wash its hands of this and I don't want any part of it."

MAYOR GORD KRANTZ

Halton North MPP Ted Chudleigh and a move to get the issue on the ballot in November's municipal election. "I believe the biggest majority of people in Milton will feel abandoned. 'Take no further action' means abandonment."

Ms Savoline explained that the region's request for an exemption from Ontario water safety regulations would still stand if the resolution passed. However, Milton councillors took exception to the position that the region would "take no further action" on the situation.

The issue revolves around whether Milton needs continuous chlorination to kill bacteria its water or a standby sys-

• Continued on page 3

### NEWSLINES

#### Weekend strawberry fun

There's plenty of food and fun to sink one's teeth into at Andrews Scenic Acres this weekend, during the annual Strawberry Festival Pioneer Days Celebration.

The event, put on by Friends of the Halton Region Museum, will be held from Saturday to Canada Day Tuesday. Festivities will run between 8 a.m. and 8 p.m. each day.

Wagon rides, pony rides, antique tractors, farm history and

Victorian toys will be among the attractions as will everyone's favorite pick-your-own or picked strawberries.

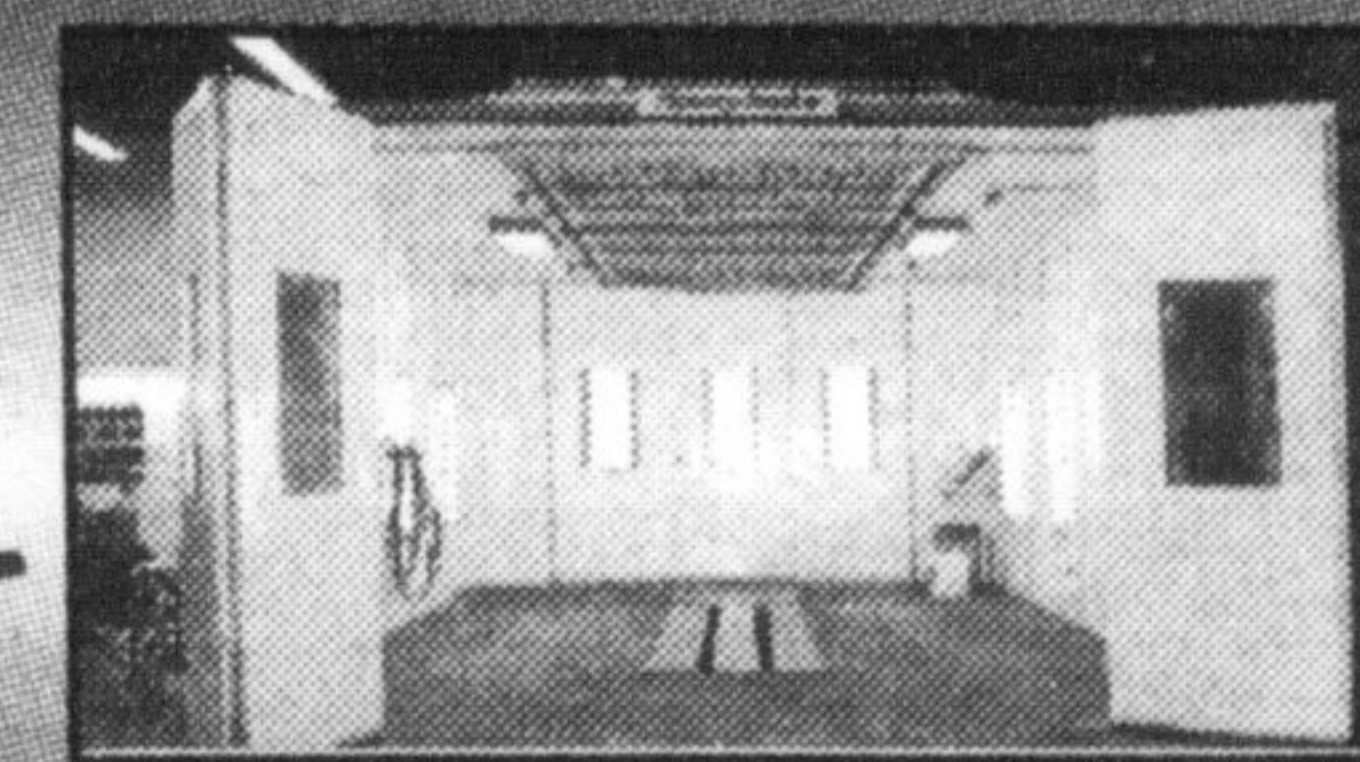
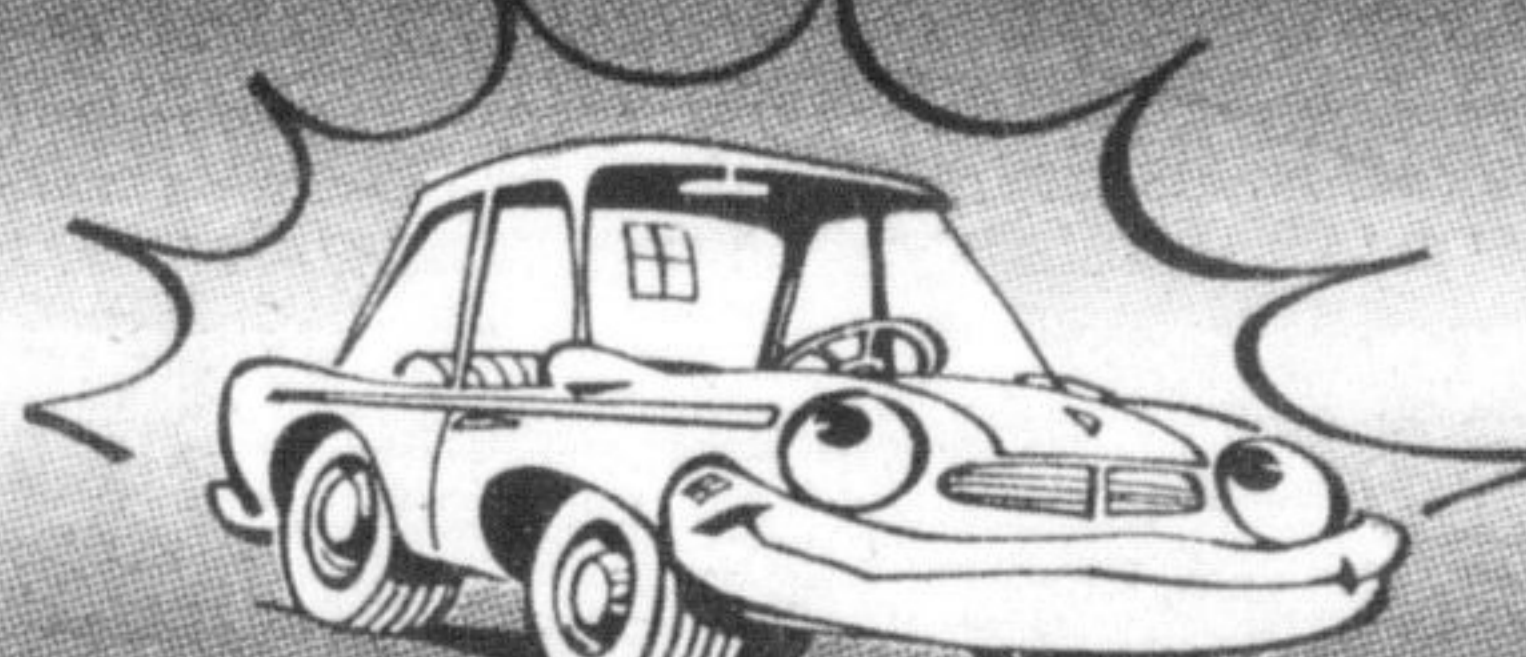
Andrews Scenic Acres is located on 10 Sideroad, just off Hwy. 25 north of Milton.

**MOUNTAINVIEW VETERINARY SERVICES**  
327 Bronte St. S. Milton L9T 4A4  
New Location  
Dr. Jo-Ann McKinnon  
875-1322

WHAT DO YOU WANT YOUR CAR TO LOOK LIKE?



OR



We have the latest State of The Art Equipment with Computerized Technology!

655 Main St. E., Milton • FREE COURTESY CAR • 875-3673 Ext. 238

**GALLINGER**  
COLLISION & REFINISHING CENTRE  
"NEW" Chroma Vision Color Matching System  
100% PAINT MATCH