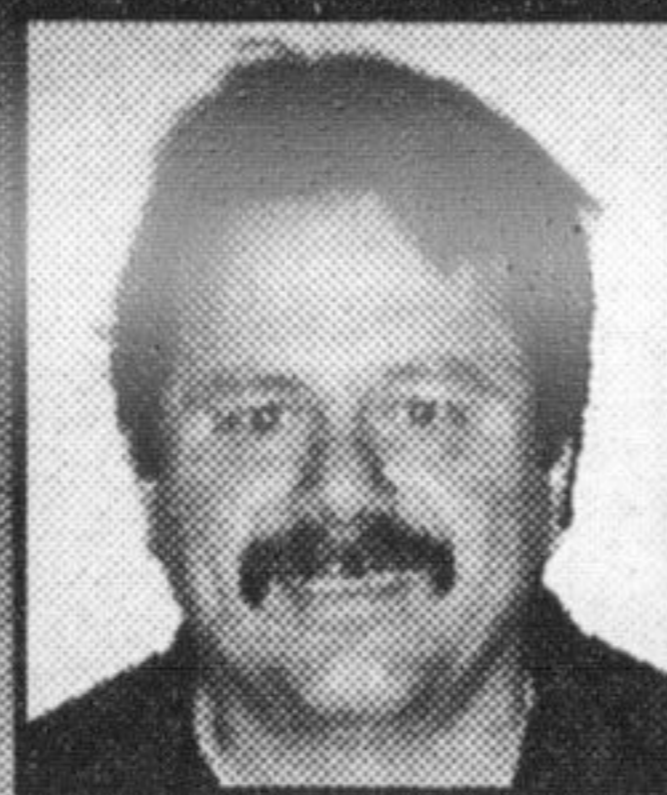


Beat the Heat!



KEVIN BLACKLOCK

Air Conditioning Check-up

- Diagnostic performance test
- Check belts & hoses
- System recharge

Service available for both R12 & R134A systems

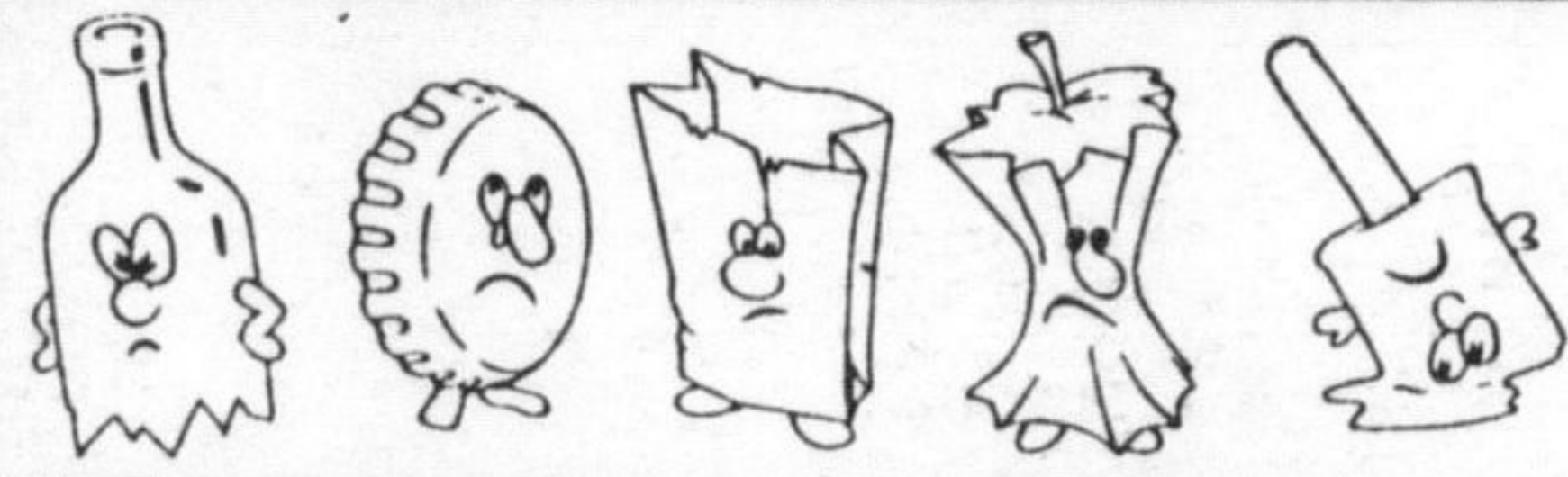
\$34.95*

Offer Extended till June 30/97

*PARTS & FREON EXTRA

K&B AUTO SERVICE

715 Main Street E. Milton 876-3148



YUKKIE SEASON OPEN ALL YEAR
Put yukkies in their place!

Fabricland's Annual INVENTORY CLEARANCE SALE

SALE ON NOW!

EVERY FABRIC NOW

Ask about your **FREE GIFT!**
With a \$20 purchase, while quantities last.

REDUCED FROM **20-66% OFF**

Our Regular Price

(Excluding promotional goods & ends)

*Sewing Club Members

Save an extra 10%!

See Fabricland's Inventory Clearance Sale Flyer for full details.

Sale in effect June 2-30, 1997. Most items available in most stores. Look for the red sale tags.

Special Selection! BOTTOMWEIGHT SPORTSWEAR 150cm wide. Our Reg. 8.98 m	NOW 4.49 m	YOU SAVE 50%!*
Special Selection! 'Lifestyle' LINEN-LOOK 150cm wide. Our Reg. 12.98 m	NOW 6.49 m	YOU SAVE 50%!*
Special Selection! ARCTIC FLEECE SOLIDS 150cm wide. Our Reg. 14.98-16.98 m	NOW 5.99-7.79 m	YOU SAVE 60%!*
Special Selection! 'Festival' RAYON PRINTS 115cm wide. Our Reg. 9.98 m	NOW 4.99 m	YOU SAVE 50%!*
Special Selection! 'Pucker' POLYESTER SOLIDS 115cm wide. Our Reg. 12.98 m	NOW 6.49 m	YOU SAVE 50%!*
Special Selection! 'Camille' COTTON PRINTS 115cm wide. Our Reg. 7.98 m	NOW 3.99 m	YOU SAVE 50%!*
Special Selection! POLYESTER PRINTS 115cm wide. Our Reg. 10.98-12.98 m	NOW 3.73-4.41 m	YOU SAVE 66%!*
Special Selection! POLYESTER SOLIDS 115cm wide. Our Reg. 7.98-9.98 m	NOW 2.71-3.39 m	YOU SAVE 66%!*
Special Selection! POLYESTER JACQUARDS 115cm wide. Our Reg. 12.98 m	NOW 4.41 m	YOU SAVE 66%!*
Special Selection! MALDEN® VELVET UPHOLSTERY 140cm wide. Our Reg. 18.98 m	NOW 9.49 m	YOU SAVE 50%!*
Special Selection! ASST. JACQUARD UPHOLSTERY 140cm Our Reg. 9.98-12.98 m	NOW 4.99 m	SAVE UP TO 61%!*
Special Selection! EXTRA W-I-D-E SHEETING SOLIDS 230cm Our Reg. 12.98-14.98 m	NOW 6.49-7.49 m	YOU SAVE 50%!*
Special Selection! AWNING CANVAS 37-75cm wide, solids & stripes. Our Reg. 4.49-9.98 m	NOW 2.25-4.99 m	YOU SAVE 50%!*
Entire Stock! CUSHIONS Tapestry, Matelasse, Decorator Prints Individually priced.	NOW 50% OFF Our Reg. Price (At Home Dec Centres only)	

547 Main St. E. Milton 878-0931

Call our info-line at 1-888-780-0333 (or 780-0333 within the local 416 and 905 area codes), and visit our website at www.fabricland.ca

FABRICLAND
CANADA'S LARGEST FASHION FABRIC DISTRIBUTOR

The Best in Selection and Price Anywhere

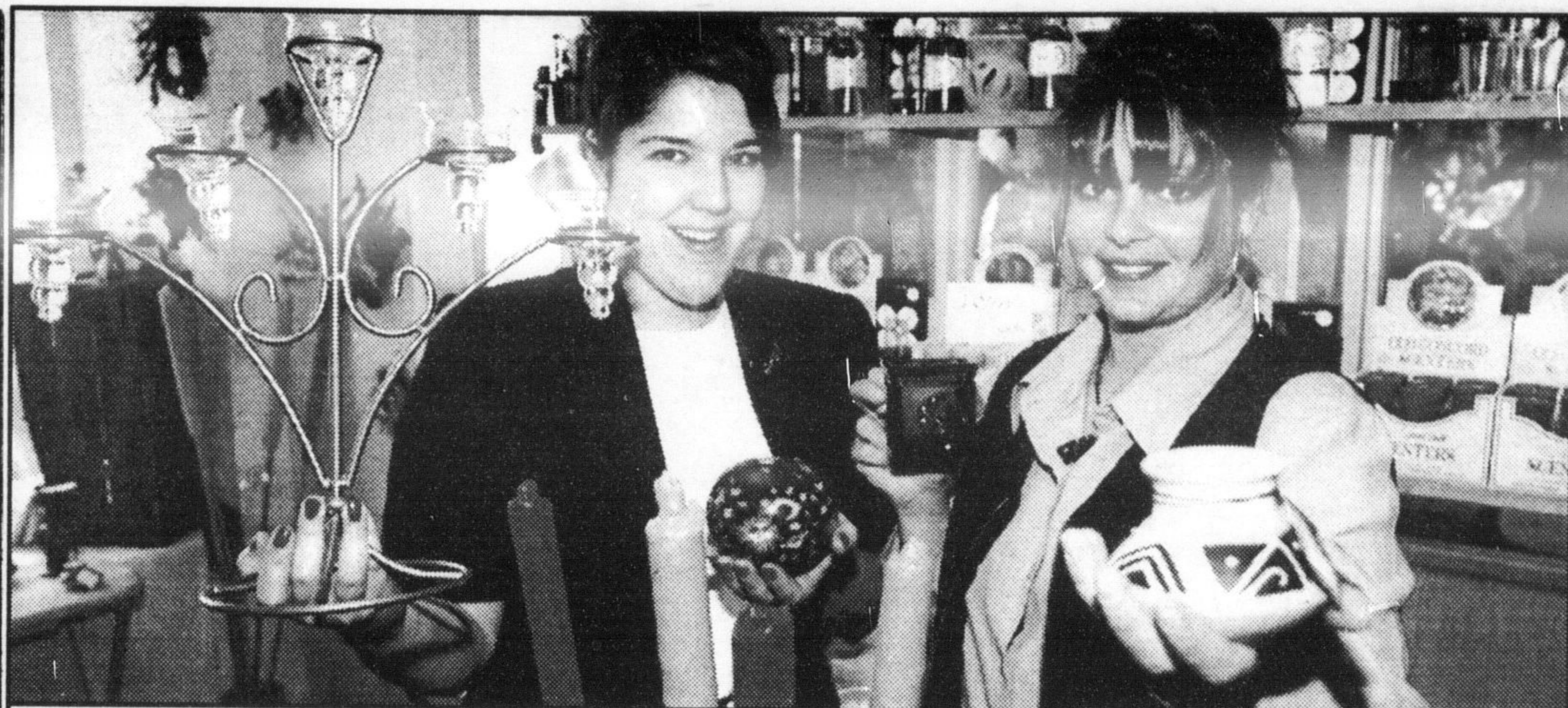


Photo by GRAHAM PAINE

Candle creativity

Wicks & Nicks co-owners Kyawnee Lynch (left) and Denise Peruzzi display some of the various candles available at their downtown Main Street business. The store opened late last month.

Crime Watch



Crime Watch is presented in co-operation with Halton Regional Police Services and is aimed at promoting awareness of criminal activity in our community and a better understanding of the security issues facing Milton residents.

The following is a list of Milton-area break-ins reported to Halton Police. Some occurrences may not appear because of delays in reporting the incidents.

June 1st to 7th, 1997 Break & Enters

Date	Location	What	How
June 2	Cabot Trail (Other)	Nothing taken	Entered Garden Shed
June 3	Satok Cres. (Residence)	Nothing taken	Unlocked rear window
June 3	Fourth Line (Residence)	Electronics, Jewelry, TV	Unknown
June 2	No. 10 Sd. Rd. (Residence)	Electronic Equipment	Unlocked patio door

If you have information regarding the above crimes, please contact #1 District Criminal Investigations at 825-4777, ext. 2416 or Crime Stoppers at 825-TIPS (825-8477) or 1-800-222-TIPS.

Callers will never have to identify themselves

Secur-U installs professional monitored alarms to both residential and commercial users.



FOR MORE INFORMATION CALL

878-4634

ALARM SYSTEMS
VIDEO SURVEILLANCE

342 BRONTE ST., UNIT #3

LET US **SECUR-U** CALL NOW!

NOTICE

We've Moved!

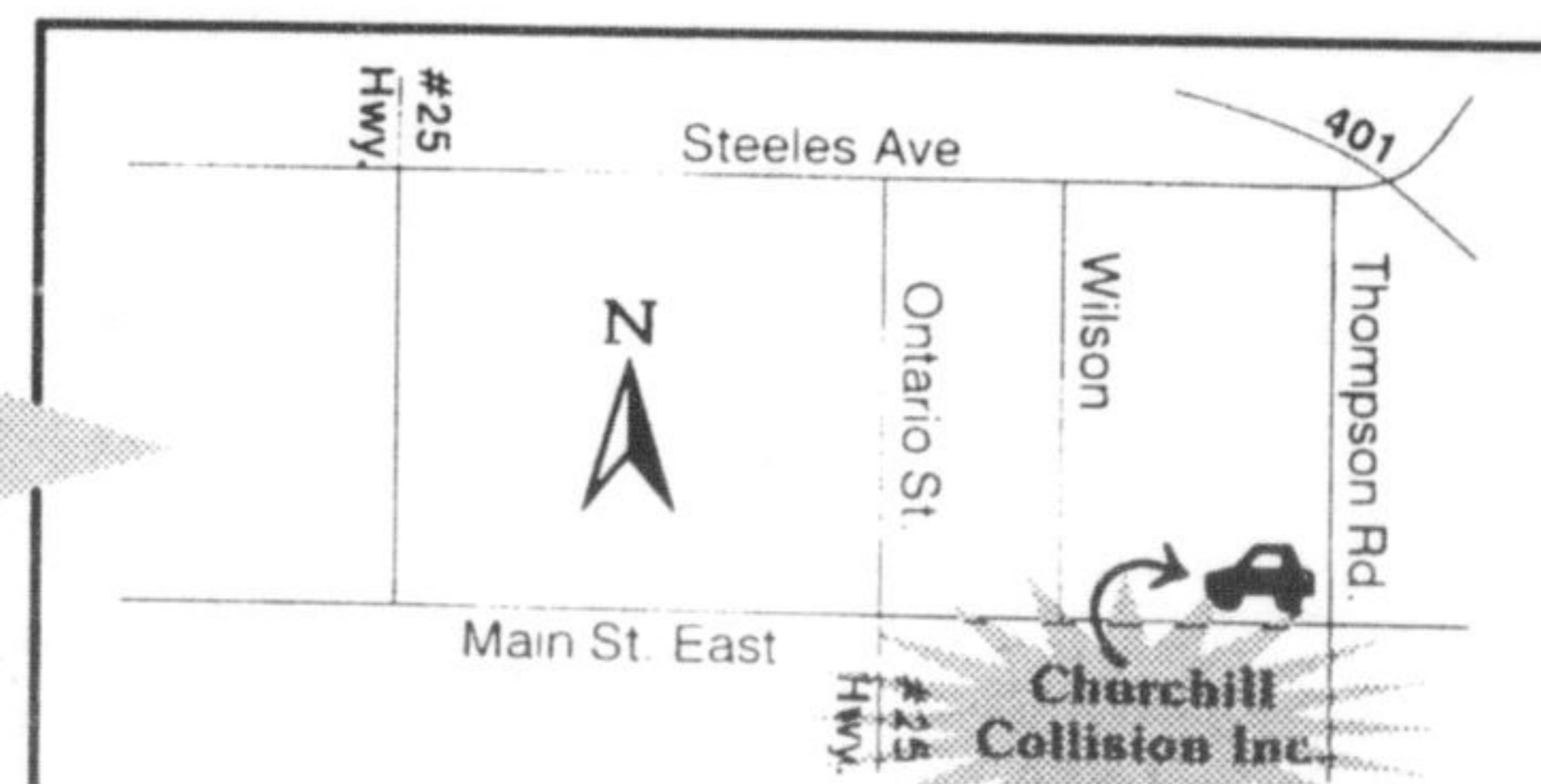
CHURCHILL COLLISION INC.

is now located at ...

885 Main St. E., Units 7 & 8

Northwest corner of Thompson & Main
MILTON

New Location



(905) **875-3208**

INSERTS

TUESDAY, JUNE 10

IN-TOWN & RURAL

- Holland Park Garden Gallery (P)
- Moore's The Suit People (P)
- Shoppers Drug Mart
- Spectrum Flooring (P)
- Zellers

IN-TOWN ONLY

- First Class Educational Services
- In The Classroom

RURAL ONLY

- Connon Nurseries
- Richway Furnishings (broyhill)
- Sears 0631 (P)
- Walmart

*P=Partial Delivery



INSERTS