

THE BOARD OF DIRECTORS AND STAFF



are pleased to invite you to attend our

43rd Annual Meeting

Wednesday, June 19, 1997 at 7:30 p.m.

at St. Judes Anglican Church

160 William Street, Oakville, Ontario

Guest Speaker: Burlington Mayor Walter Mulkeiwich  
"Responding To Today's Changing Times"

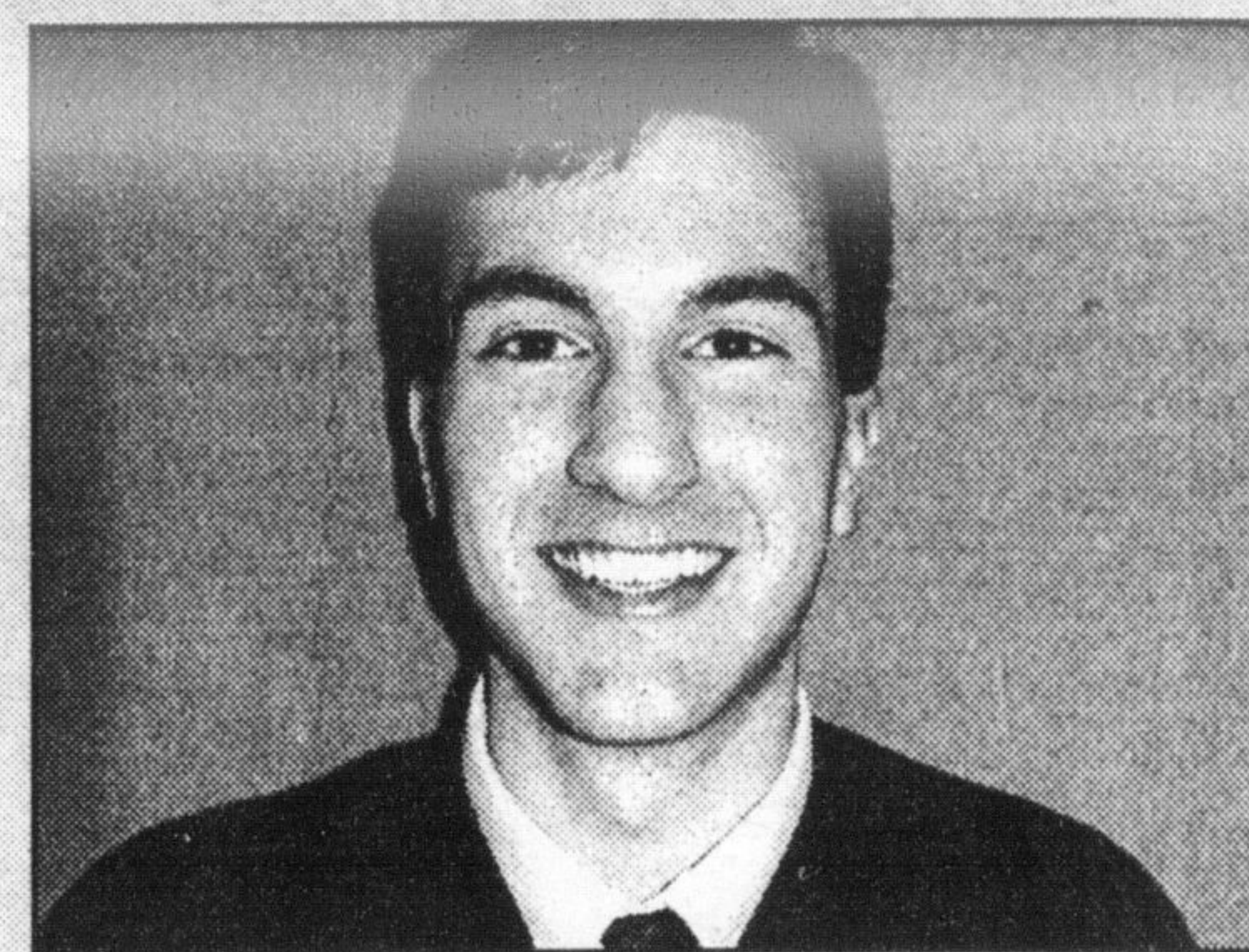
# Sharpe wins academic prize

Milton's David Sharpe was recently honored with the Chancellor's Prize in Education from Mount Allison University of New Brunswick.

Earning a Bachelor of Education degree this spring, Mr. Sharpe won the award as the student with the highest academic standing in the education program.

He has pursued two degrees over his five-year university career. In addition to education, he earned a degree in music and majored in piano.

A past winner of the Young Atlantic Artists competition, he plans to pursue a master's degree in piano performance at the University of Arizona.



David Sharpe

## Police eyeing pushy drivers in campaign

Hard-driving road jockeys beware.

Halton Regional Police, who launched their annual Aggressive Driving Campaign yesterday, are watching closely for motorists with dangerous driving habits.

During the June 9-22 campaign, police services across Ontario are sending a message to motorists to drive in a friendly manner. The message goes to those who speed, weave in and out of lanes, fail to signal and tailgate.

A total of 2,290 accidents — including four fatalities and 409 involving injury — occurred in Halton last year.

"Most of us have no problem seeing the aggressive drivers around us, but many of us fail to recognize our own bad driving habits," said Sgt. Tom Chapman of the Halton police's public safety unit.

"Too many drivers defy the rules of the road with no concern for safety. These drivers for some reason change into a monster behind the wheel."

## Bush parties addressed at cop meeting

Bush Parties: Concerns and Risks is the topic of a special Wednesday (June 11) public meeting.

The free event — from 7 p.m. to 9 p.m. in the auditorium of the Halton Regional Centre — is being sponsored by Halton Regional Police, the Halton Regional Health Department and Parent Watch.

The groups are joining forces to raise awareness about bush parties and related issues such as substance abuse, drinking and driving as well as personal safety and injury. Also presented will be community initiatives that provide alternatives to bush parties.

The evening will feature a student-made video presentation depicting a typical bush party site and a student panel discussion.

The Regional Centre is located at 1151 Bronte Rd.

For more information call Community Policing Co-ordinator Sgt. Ray Hendry at 878-5511 ext. 5064.

1997 EXPLORER 4x4 2-DOOR SPORT AND 4-DOOR XLS

# Two Easy Ways To The Top

Great Lease Payments and Value-Added Packages Now Available on North America's Leading Sport Utility Vehicle!

1997 EXPLORER 4x4 2-DOOR SPORT

**\$299** 24 MONTH LEASE

WITH \$3,345 DOWNPAYMENT OR EQUIVALENT TRADE OR PURCHASE FOR \$31,695\*\*



2-DOOR STANDARD FEATURES:

- 4.0L EFI V6 Engine
- Premium Sound AM/FM Cassette
- Air Conditioning
- Power Windows/Locks/Mirrors
- Cloth Captain's Chairs
- Dual AirBags & ABS Brakes

PLUS NO-EXTRA-CHARGE PREMIUM SPORT PACKAGE!

- Graphite Wheel-Lip Mouldings
- Metal Side Step-Bars
- P255/16" White Letter Tires
- 16" Chrome Steel Wheels

Save up to \$7,000 towards the purchase of a new Ford, Mercury or Lincoln vehicle.†

ASK ABOUT FORD'S ADDITIONAL \$750 GRADUATE CASHBACK\*

4-DOOR STANDARD FEATURES:

- 4.0L EFI V6 Engine
- 5-Speed Automatic
- Air Conditioning
- Tilt Steering & Speed Control
- Dual AirBags & ABS Brakes
- Premium Sound AM/FM Cassette

PLUS VALUE-ADDED XLS PACKAGE!

- Power Windows
- Power Mirrors
- Power Locks

1997 EXPLORER 4x4 4-DOOR XLS

**\$3999**

WITH \$2,995 DOWNPAYMENT OR EQUIVALENT TRADE OR PURCHASE FOR \$32,853\*\*

With a '97 Explorer 4x4, Getting to the Top Has Never Been More Fun... or More Affordable!

**FORD SEE YOUR ONTARIO FORD & MERCURY DEALERS MERCURY**

WISE BUYERS READ THE LEGAL COPY. \*\*New 1997 Explorer 2-Door Sport with P.E.P. 676D or Explorer 4-Door XLS with P.E.P. 686A, monthly lease payment of \$299/\$399 based on 24 month lease from Ford Credit to qualified retail lessees, on approved credit. Some conditions and a mileage restriction of 36,000km over 2 years apply. \$3,345/\$2,995 downpayment or equivalent trade required. First month payment and security deposit required. \*\*Or purchase new Explorer 2-Door Sport with P.E.P. 676D or Explorer 4-Door XLS with P.E.P. 686A \$31,095/\$32,853. Offers exclude freight (\$780), license, insurance and all applicable taxes. Dealer may lease and sell for less. See Dealer for details. †124 month lease available to qualified retail lessees on approved credit. Total lease payment due at inception of the lease. †Save up to \$700 a year to a maximum of \$3,500 over five years with the CIBC Ford Visa Card and up to \$1,400 a year to a maximum of \$7,000 over five years with the CIBC Ford Visa Gold Card towards the purchase or lease of a new Ford, Mercury or Lincoln vehicle. Some conditions and an annual fee apply. Credit approval required. Ask for details on this program. Visa is a registered trademark of Visa International. •Service Association, CIBC and Ford Motor Company of Canada. Limited licensees of Mark. Some conditions apply to Graduate Cashback program, see dealer for details. †Based on Autofacts. Ontario FMDA, P.O. Box 2000, Oakville, Ontario L6J 5E4

**DO YOUR PART**

Please put yukky's in their place JOIN US!