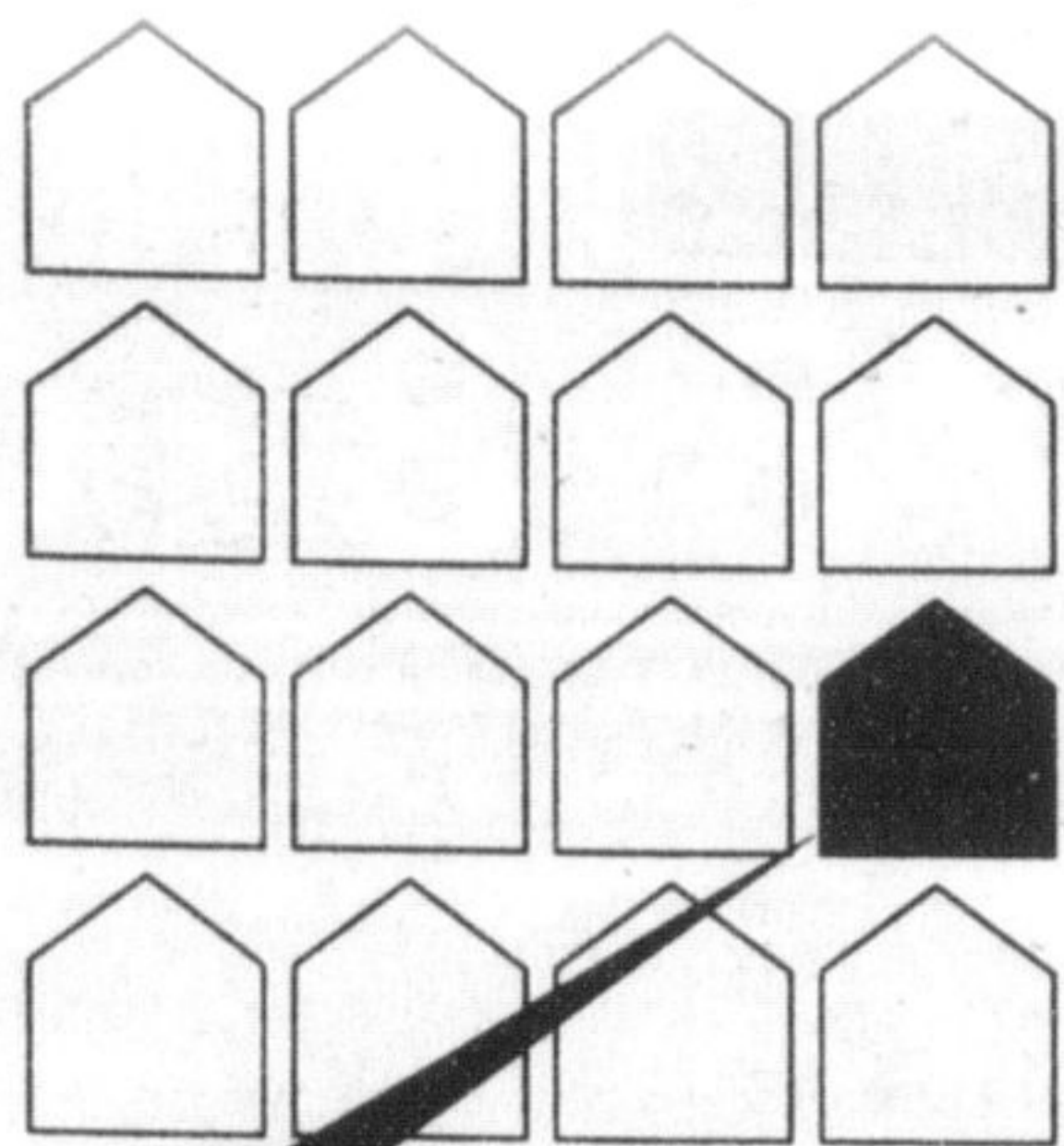


Sometimes looking For The Right Home Can Be Like Finding A Needle In A Haystack!



Let A Licensed Real Estate Professional Find It For You!

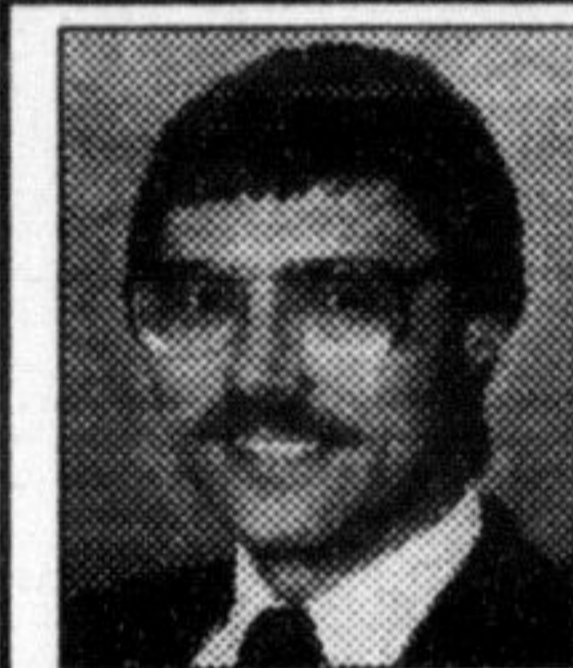


SHARON KERLEY
Sales Representative
Registered Relocation Specialist
Office 878-7777
Tor. Line 825-4485



4 BEDROOMS

2 storey townhome in one of Miltons nicest areas. Eat-in kitchen, spacious living/dining room. Basement has been partially finished and offers in-law suite potential.



RON FURIK
Sales Representative
Office 878-7777
Res. 878-3337
Tor. Line 825-4485

HOT OFF THE PRESS



Located on a quiet residential street close to schools and parkland. This all brick 5 level home offers ceramic flooring in hallways, bathrooms and kitchen, dining room overlooking living room, 3 bathrooms, spacious eat-in kitchen, central air and family room with fireplace. Call Ron today. Asking \$227,900.

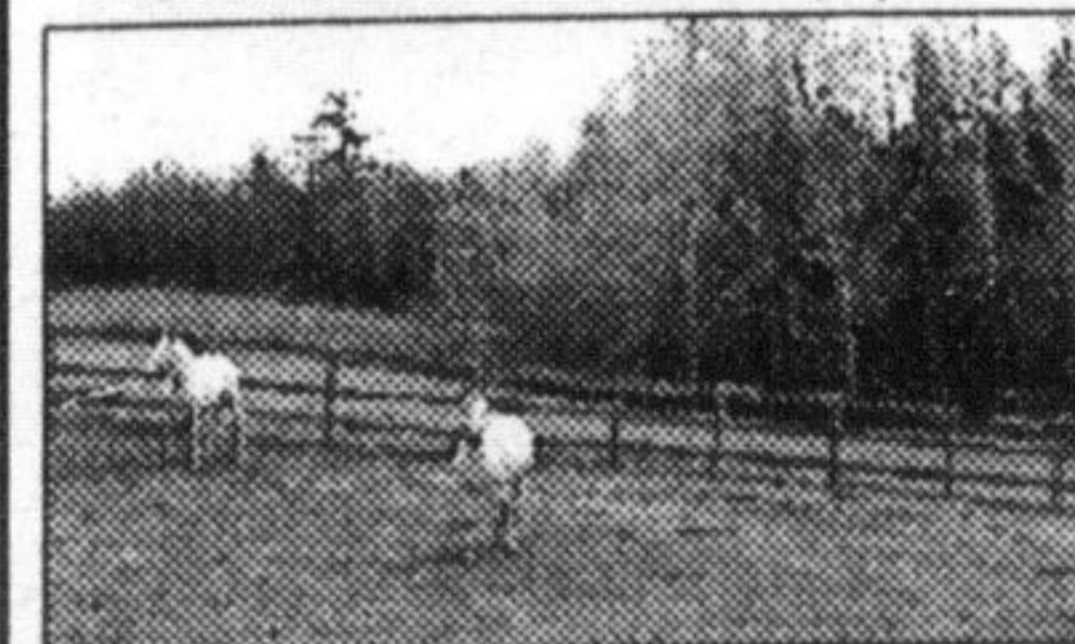
POWER OF SALE

1/3 of an acre building lot located south of Campbellville Village. Now listed at \$74,900.



JEAN SNOWDEN
Sales Rep.
878-7777
Office

OPEN HOUSE - SUN. JUNE 8, 2-4 PM
2130 DERRY RD., (JUST EAST OF MCNIVEN)



Lovely 3000 sq. ft. home on 13 1/2 acres, stream, 2 barns, 5 paddocks. 4 car garage. Ideal hobby/ horse farm. \$419,000.



FIRST-TIME BUYER ALERT!!!
THE BANK WILL PAY YOUR CLOSING COSTS on this 3 bedroom bungalow set on private lot with mature trees. Call Jean for full details.
\$164,900!!

Hike For Health MDH May 25

"These boots were made for walkin'"
and walking they did to the tune of

\$1200

THANK YOU FOR YOUR PLEDGES.

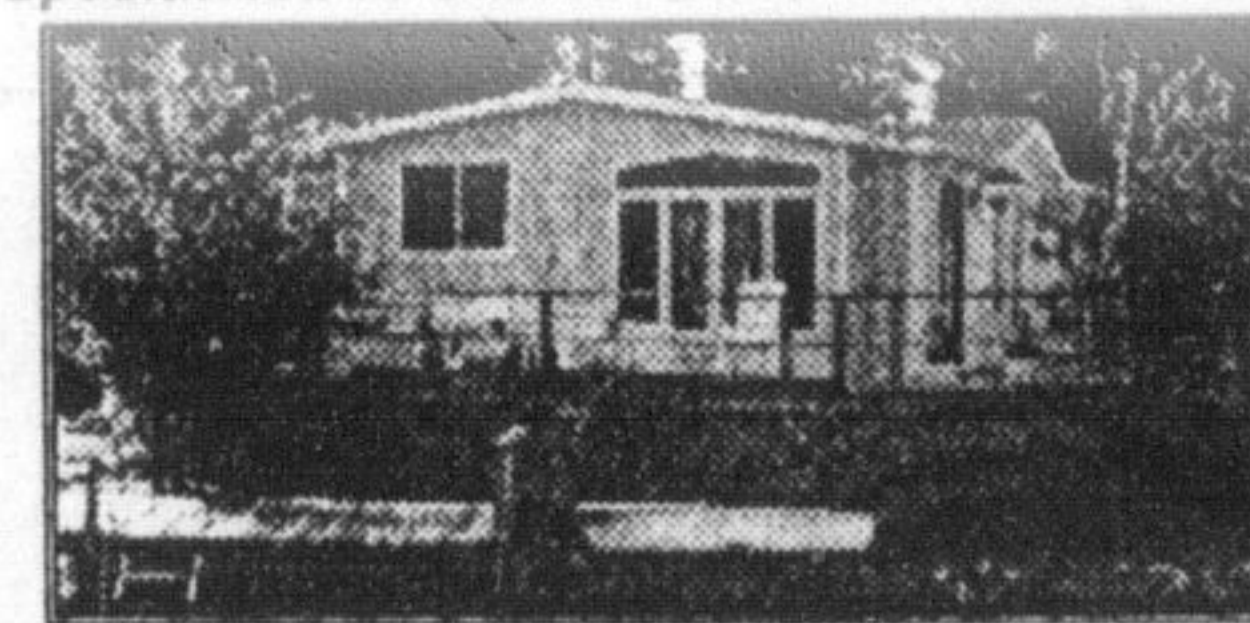
Betty Ingle

RE/MAX MILTOWNE REALTY CORPORATION.

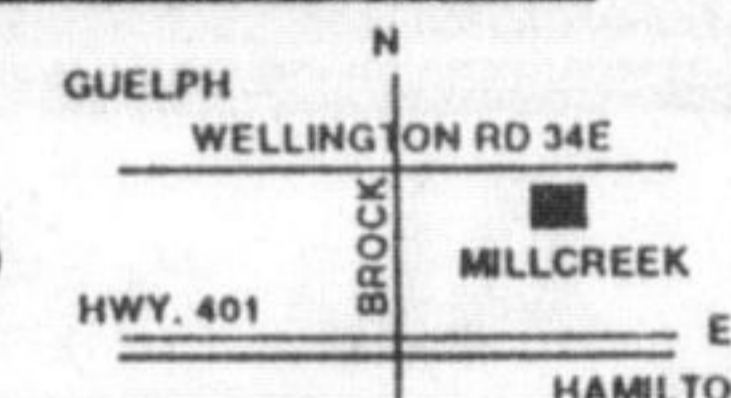


AFFORDABLE LIVING IN A YEAR ROUND ADULT COMMUNITY

Modular Homes
Priced From: **\$64,900**
One Bedroom & Two Bedroom, Two Bathroom
"Specialized in Custom Built Modular Homes"



Millcreek Adult Community
(519) 763-1048
Aberfoyle, Ontario



" THE ART OF ACCOMMODATION "

Roseland GREEN

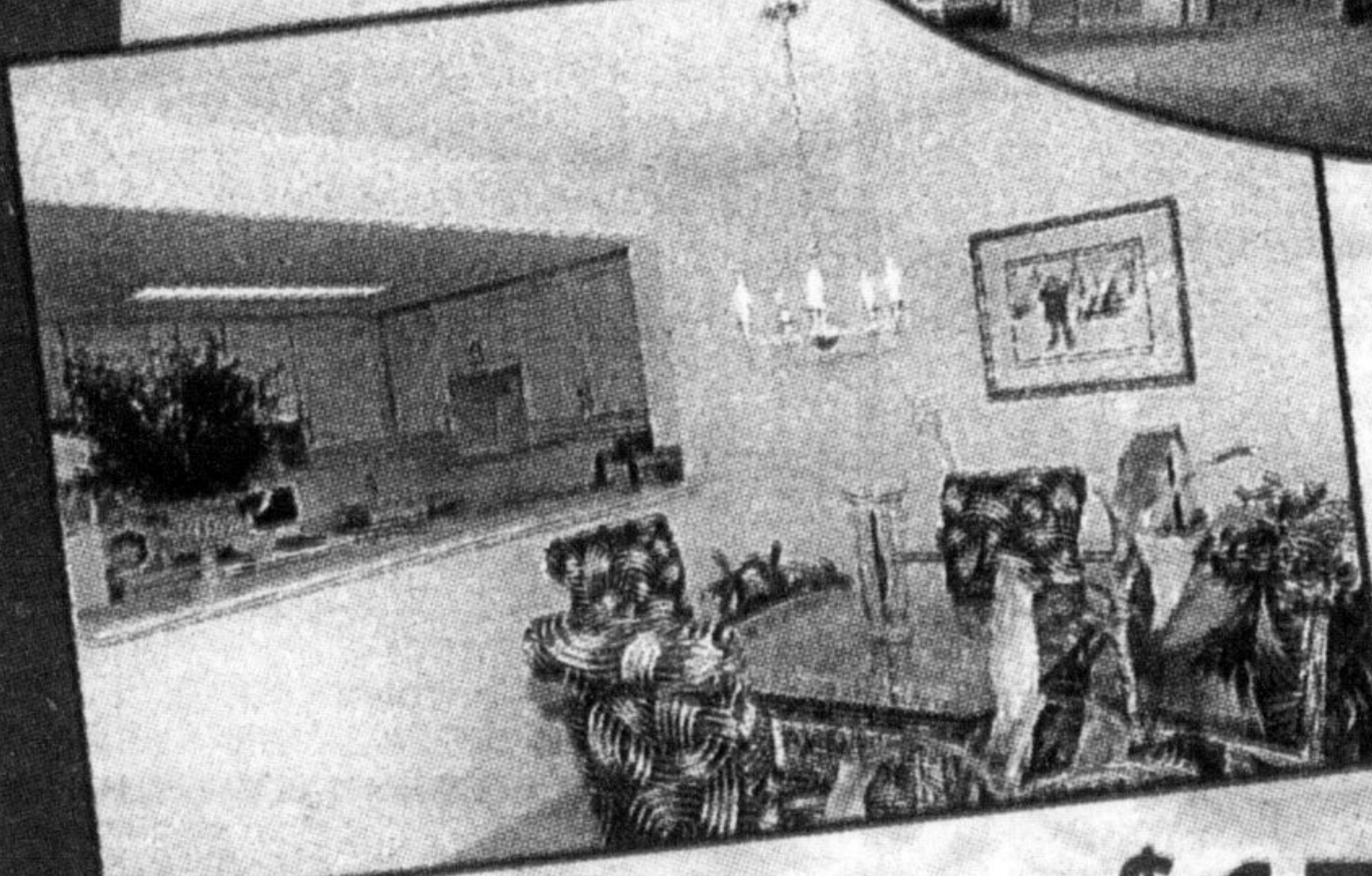
Bringing Innovative Design to the Condominium Community of South Burlington

Luxury you can Afford

"Carefree Lifestyle close to the Lake"

Possession from 30 Days

Bright open innovative layouts



from **\$172,900**

The Cartier

*2475 sq. ft.
*Ground Floor Family Room
*Double Garage
*\$267,900

The Saphir

*1565-1679 sq. ft.
*Luxurious Ensuite
*2 Walk-ins
*From \$192,900

The Tiffany

*1930 sq. ft.
*Elegant & Spacious
*Double Garage
*From \$227,900

The Versailles

*1265-1365 sq. ft.
*Beautiful Bay Window & Corner Fireplace
*Stunning Ensuite
*From \$172,900



BROKERS PROTECTED

Westbury International is pleased to invite you to Roseland Green



HOURS: Mon.-Fri. Noon-6 p.m., Sat. & Sun. 11 -5 p.m.

EXCLUSIVE AGENT: Michael Brierley Ltd., Realtor
Michael Brierley, Broker
Sydney Brierley, Sales Rep.
Wayne Heslop, Sales Rep.

For details please come and visit our fully furnished models or call 632-3837

"Time is running out to live in the best luxury project in town"