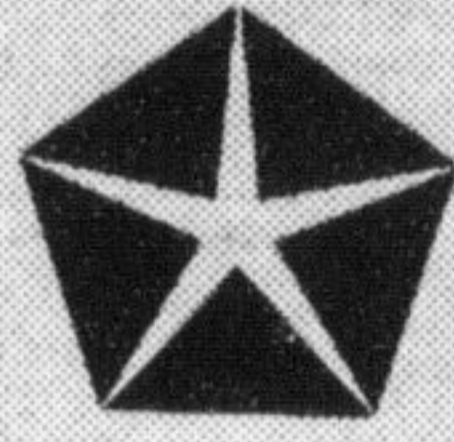


USED CAR SPECIALS

1997 Plymouth Breeze, 4 dr., green.....\$17,995.....\$334.24/48 mo.*	1993 Plymouth Voyager, wagon, green.....\$11,995
1996 Dodge Caravan SE, wagon, green.....\$21,995.....\$390.20/48 mo.*	1993 Plymouth Gr. Voyager SE, wagon, green\$12,995
1995 Chrysler Sebring LXI, 2 dr., silver.....\$16,995.....\$341.33/36 mo.*	1993 Plymouth Voyager, wagon, blue.....\$11,995
1995 Plymouth Voyager SE Rally, wgn, black \$16,995.....\$331.29/36 mo.*	1993 Plymouth Sundance, 4 dr., green.....\$ 7,995
1995 Chrysler Intrepid, 4 dr., green.....\$15,995.....\$338.69/36 mo.*	1993 Plymouth Voyager Gld Pkg., wagon, green\$11,995
1995 Chrysler Intrepid, 4 dr., chrgold.....\$12,995.....\$271.84/36 mo.*	1993 Dodge Caravan, wagon, green.....\$10,995
1994 Dodge Shadow, 4 dr., teal.....\$ 8,995.....\$203.58/24 mo.*	1993 Chrysler Intrepid, 4 dr., green.....\$10,995
1994 Chrysler Concorde, 4 dr., black.....\$16,995.....\$390.03/24 mo.*	1991 Plymouth Colt 200GT, 2 dr., white.....\$5,595

PLYMOUTH
DODGE TRUCKS
CHRYSLER



Hunt
Plymouth, Chrysler, Jeep & Eagle
500 BRONTE ST. MILTON
876-2580

SALES
LEASING
SERVICE
PARTS

*LEASE PRICES ARE WITH \$0 DOWNPAYMENT, PLUS TAXES.

**LEASE PRICE WITH \$370. DOWNPAYMENT, PLUS TAXES.

A PROUD SUPPORTER OF LOCAL SPORTS ORGANIZATIONS

Dateline

Dateline is a free listing of coming events only. The column is available to local community groups to assist in promoting their future events. Only charitable or non-profit community groups may use this service. We can only guarantee one issue of publicity closest to the date of the occurrence although more insertions are possible if demand is low.

Notices for Dateline should be handed in at the office of The Champion, 191 Main St. E., mailed to P.O. Box 248, Milton, Ont., L9T 4N9, or faxed to (905)878-4943. The final deadline is noon Friday for Tuesday's edition and noon Wednesday for Friday's edition. Dateline items will not be accepted by telephone.

Friday May 16

It's **Hot Meal Deal Day** at the Milton Seniors' Activity Centre, 500 Childs Dr., from 11:45 a.m. to 1:15 p.m. Seniors are invited to join in for great food and fellow-

ship. For more information, call 875-1681.

Saturday May 17

St. John's Plant Sale takes place at Guelph Line and No. 10 Sideroad from 9:30 a.m. to 2 p.m. The event also features crafts, home baking, kids craft table and light luncheon. Donations of unwanted indoor/outdoor plants, garden tools and books can be made by calling 854-0328, 854-0479, 854-2363 or (519) 853-0605.

Tuesday May 20

The **Calling New Parents Group** meets at CHERISH Parent-Child Centre, 540 Childs Dr., from 1:30 to 3:30 p.m. For information, call 825-6060, ext. 7365.

The Milton Children and Youth Centre, 917 Nipissing Rd., holds the **Leisure Time drop off program** for infants to five-year-olds from 1 to 3 p.m. The cost is \$5.50.

The Milton Women's Centre hosts an Exploring Health Alternatives workshop on **acupuncture** with Alice Pearcey. The centre is located at Hopedale Mall, 1515 Rebecca St., Suite 301, in Oakville from 7 to 9 p.m. The cost is \$6. To register, call 847-5520.

Tuesday May 20 - 21

Bishop Reding Secondary School on Main Street holds a used uniform sale from 3 to 8 p.m.

Tuesday May 20 - 26

The Halton Youth Symphony hosts a fundraising **book sale** in the centre court of Milton Mall.

Wednesday May 21

It's **Hot Meal Deal Day** at the Milton Seniors' Activity Centre, 500 Childs Dr., from 11:45 a.m. to 1:15 p.m. Seniors are invited to join in for great food and fellowship. For more information, call 875-1681.

The Milton Children and Youth Centre, 917 Nipissing Rd., holds a **drop-in for parents and infants to five-year-olds** from 1-3 p.m. The cost ranges from \$4 to \$6.

Ladies are invited to **Neighbourhood Coffee Hour** at Allendale auditorium, 185 Ontario St., from 9:30 to 11 a.m. The special feature is 'What's a Salad Without a Dressing.' An interlude of musical selections follows. The guest speaker is Pauline Beange. Admission is free. Babysitting is provided.

The **Milton La Leche League** meets at CHERISH Family Resource Centre, 540 Childs Dr., at 8 p.m. Women interested in breastfeeding information are invited to attend. For information, call 878-6387.

• see **DATLINE** on page 20

All this **CHOICE** on one lot!

HALTON'S ONLY ONE STOP LOT FOR FORD, LINCOLN, MERCURY & FORD TRUCK PRODUCTS



'95 FORD CONTOUR

Stock#898A. Automatic, air, stereo, cass., red on grey, only 33,000 km.

Lease or buy.

\$11,995
Buy: + taxes



'96 LINCOLN TOWN CAR

Stock#875A. Automatic, loaded, leather, white on grey. Only 22,000 kms.

Lease or buy.

\$32,995
Buy: + taxes



'96 SABLE WAGON

Stock#886A. Fully loaded, green on green.

Lease or buy.

\$19,995
Buy: + taxes



'96 F150

Stock#851A. Stick, air, black on grey.

Buy for:

\$19,995
+ taxes

Serving Halton since 1967

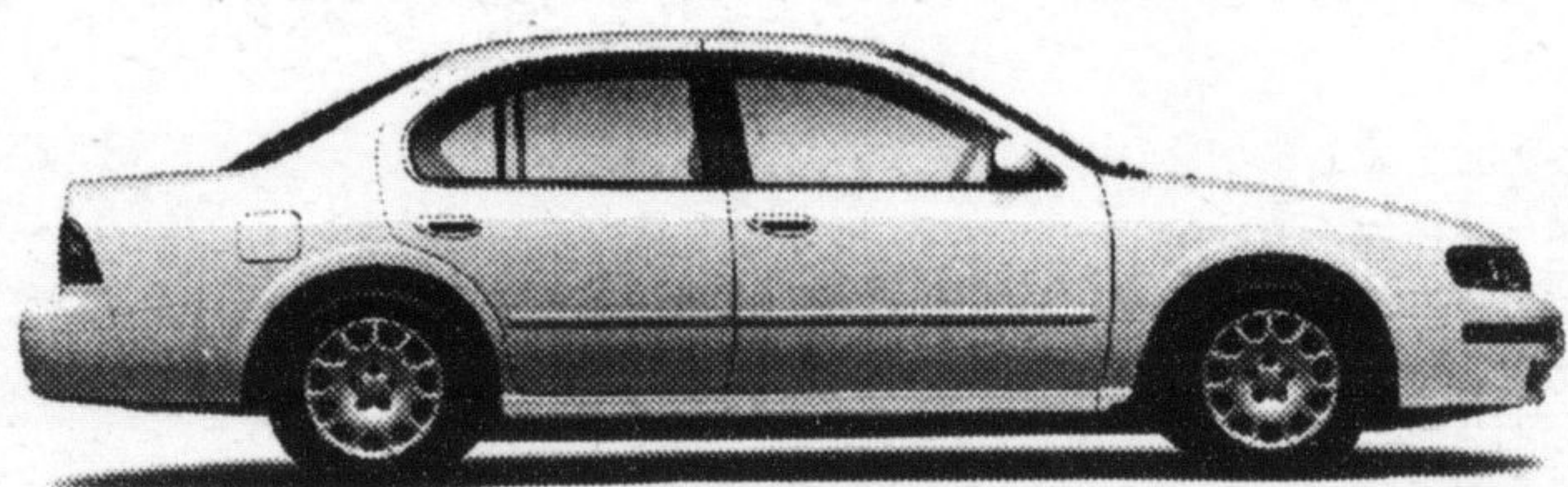


GALLINGER
MOTORS LIMITED

FORD
LINCOLN
MERCURY

• 655 MAIN ST. E., MILTON • 875-3673

The 1997 Nissan Maxima



6.8%

Lease Rate
\$399*

24-month lease
or buy from
\$28,698

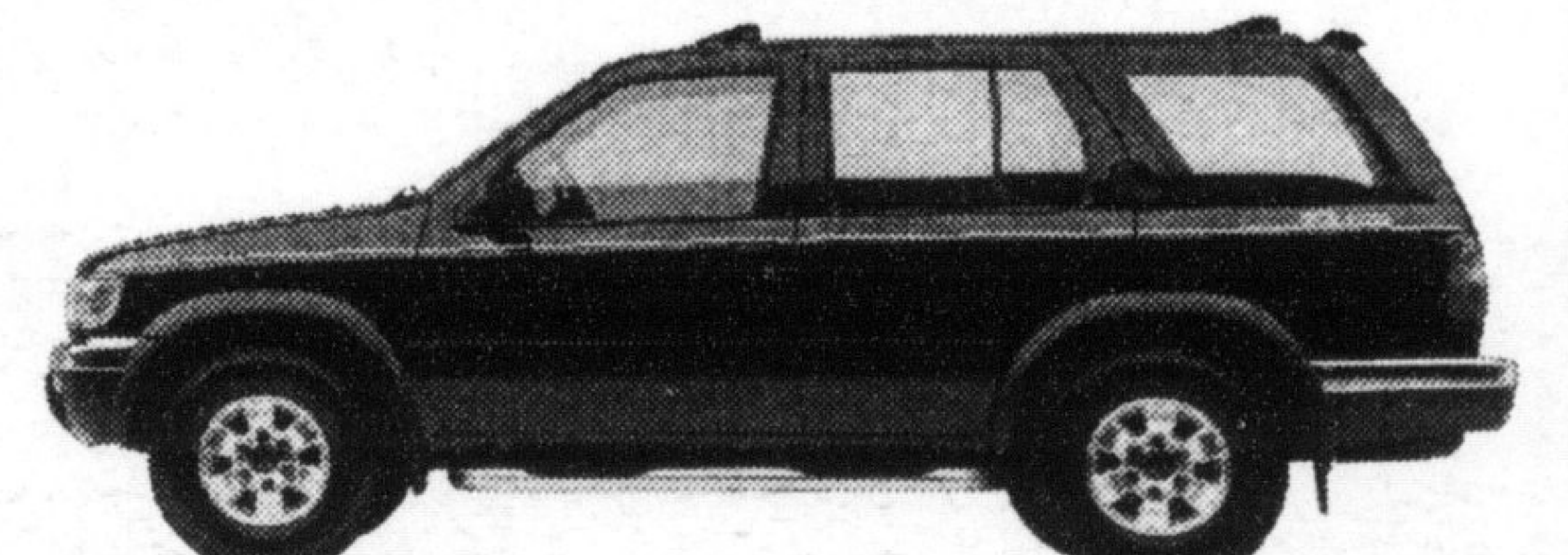
Automatic Transmission, CD player with AM/FM Cassette & 6 Speakers, air conditioning, heated power mirrors, 3.0L, 24-valve 190 hp engine, keyless entry & anti-theft system, front & rear disc brakes, full instrumentation, full power equipment, illuminated entry system, heated front seats, full-size spare tire, 8-way power driver's seat. The Best Automotive Full-Line Warranty. *Ask us about N.C.F.I. No-Nonsense leasing.

Smart people always read the fine print. And they always wear their seatbelts. '97 Maxima GXE (U4RG77 CK00), A.L.R. 6.8% \$399/mo.; Pathfinder XE (5CLG57 CC000 A.L.P.) 6.8% \$399/mo. with down payment (Maxima \$2,389; Pathfinder \$3,331) or equivalent trade. 1st payment (\$399, \$399) & security deposit (\$475, \$475) due at lease signing. Option to buy at lease end (Maxima \$19,871. Pathfinder \$22,113 based on max. of 40,000 km. Additional km charge of \$0.08/km if applicable. All offers through Nissan Canada Finance Inc. O.A.C. and exclude freight, P.D.I., licence, insurance & taxes. See dealer for details.



NORTH END NISSAN

The 1997 Nissan Pathfinder



6.8%

Lease Rate
\$399*

24-month lease
or buy from
\$31,598

3.3L, SOHC V6 engine, full power equipment & cruise control, "Shift-On-The-Fly" 4WD system, keyless entry & anti-theft system, "All-Terrain" 4-wheel ABS brakes, roof rack, heavy duty "MonoFrame" construction, tonneau cover & cargo net, air-conditioning, dual airbags, CD player with AM/FM & 6 speakers. The Best Automotive Full-Line Warranty. *Ask us about N.C.F.I. No-Nonsense leasing.

610 MARTIN ST.
MILTON

878-4137

ALL VEHICLES SOLD BACKED BY 36 YEARS EXPERIENCE.