

Relief over final shape of provincial legislation

By **BRAD REAUME**
The Champion

Amendments to proposed development charge legislation will protect current residents from the costs of new development, according to Hazel McCallion, chair of a Greater

Toronto Area (GTA) mayor's subcommittee on the issue.

Mayor McCallion, Oakville Mayor Ann Mulvale and Markham mayor Don Cousens led the municipal negotiating team that recently feared current homeowners would be hit with a substantial shift in those costs.

Developers had taken a position that soft services, such as libraries, arenas, and sport fields, should not be funded through development charges. An initial draft of provincial legislation called for a 30 per cent reduction in the amount municipalities could charge developers for those services.

The final bill includes only a 10 per cent reduction, which Mayor McCallion said municipalities could work with, despite their desire for the status quo. She said that new facilities will simply have to be staged carefully with an eye on finances to avoid tax hikes to current residents.

In the debate over the legislation, developers suggested only services specifically used by new homeowners like water, sewers, and roads, should be paid for through the development fees.

Milton council recently debated the
• see **COMPROMISE** on page 12

Allendale gets boost

• from **MPP JACKSON** on page 1 more than double because of this government funding.

"This was a wonderful surprise, all the residents and staff members here will be thrilled."

Supportive housing coordinator Karen Aikman said new funds will allow for more 'on-call' service at Allendale's two building complexes. Additional staff will be hired to provide on-site care 12 hours a day, seven days a week.

Provincial funding will also pave the way for other new projects for various organizations, including:

- Community Care Access Centre of Halton — to expand home care services;
- Brain Injury Services of Hamilton Inc. — to expand personal support services to people with acquired brain injuries;
- Joyce Scott Non-Profit Homes Inc. — to provide outreach services to people with physical disabilities living in Halton;
- Acton Support Services and Information Centre — to expand community support services including caregiver support and meals-on-wheels for seniors and their families in Halton Hills;
- Canadian Red Cross Society (Milton branch) — to coordinate a centralized volunteer transportation service for a variety of people living in north Halton.

Friday's announcement comes on the heels of the Ontario government's commitment to reinvest \$170 million in community-based, long-term care services across the province.

Halton/Hamilton-Wentworth's slice of the pie will potentially benefit 80,000 people and create 4,400 full-time jobs.

"The restructuring of our health care system is not being driven by any need to save money. We have kept our promise to protect health care spending in Ontario at \$17.4 billion and, in fact, we exceeded that level by spending \$17.7 billion in the last fiscal year. That's more than any government in the history of the province," stressed Mr. Jackson.

"But not only are we spending more, we are spending smarter. Fewer dollars are going to administration, upkeep of aging buildings, and duplicated services and more are being spent on direct patient care — more heart surgery, more cancer treatment and more community-based services."

COUNTRY RAD SERVICE

- Radiator & Fuel Tank Repairs
- Aluminum Welding
- Silver Soldering

400 MOROBEL DR., UNIT 4,
MILTON, ON. L9T 4N6

•878-5924

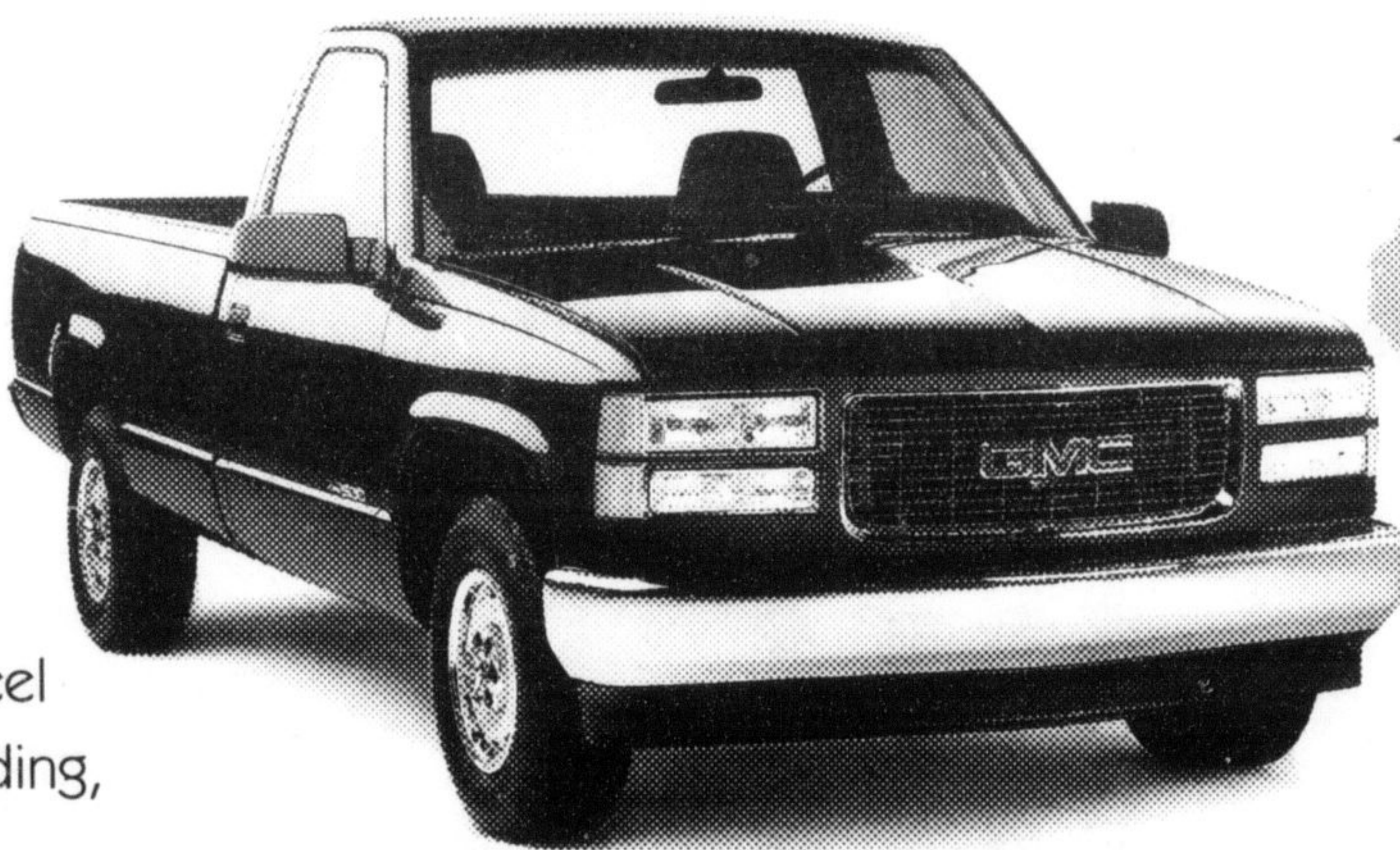
TRUCK DEALERS

YOUR GMC

**IN THIS WORLD,
IT'S SURVIVAL OF THE FITTEST.
MEET THE FITTEST.**

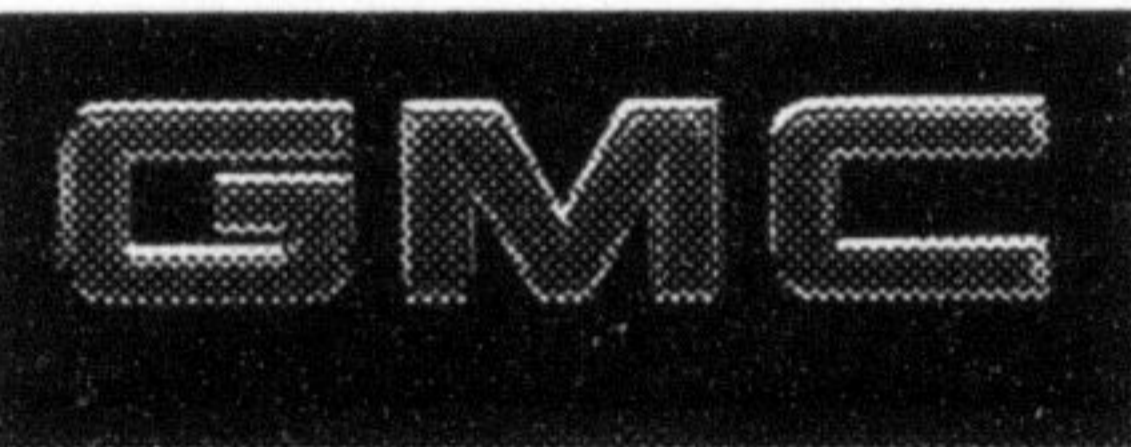
1997 KODIAK SIERRA REGULAR CAB

200 HP Vortec 4300 SFI V6 engine, 4-speed automatic transmission, cloth seats, 4-wheel ABS, dual air bags, air conditioning, deluxe chrome grille, galvanized steel 8 ft. cargo box, two-tier loading, speed sensitive steering



\$199*
(36 MONTHS / \$2,100 DOWN)

\$20,599†
(EXCLUDES FREIGHT \$895)



Offer Available For A Limited Time Only.
KODIAK SIERRAS



\$233*
(36 MONTHS / \$2,100 DOWN)

\$23,859†
(EXCLUDES FREIGHT \$895)

1997 KODIAK SIERRA EXTENDED CAB

230 HP Vortec 5000 SFI V8 engine, 4-speed automatic transmission, air conditioning, 4-wheel ABS, dual air bags, cloth seats, cruise control, tilt-wheel™ steering, chrome wheels, galvanized steel cargo box, two-tier loading, speed sensitive steering



See Your Dealer Now For Details!

Don't forget to use your GM Card Earnings toward The Total Purchase Price or lease down payment of your next new GM vehicle.†

What's your card done for you lately?‡

GM Card Earnings may be applied toward The Total Purchase Price or lease down payment of any eligible new General Motors Vehicle. Fleet sales and commercial leases excluded. For complete details on vehicle eligibility, see your General Motors Dealer.

39% VALUE FINANCING
ON SELECTED MODELS

You Should Know This: *Based on a 36 month lease for 1997 GMC Sierra Regular Cab 1SB and 1997 GMC Sierra Extended Cab 1SB equipped as described. Annual kilometre limit: 20,000 km. \$0.08 per excess kilometre. A minimum down payment of \$2,100 and \$300 security deposit are required. †Freight \$895, licence, insurance and taxes are not included. Dealer trade may be necessary. Dealer may sell/lease for less. See Dealer for details. ‡Financing on approved GMAC credit only. Example: \$10,000 borrowed at 3.9% APR, the monthly payment is \$225.33 for 48 months. Cost of borrowing is \$815.84. Total obligation is \$10,815.84. Down payment may be required. †††Offers apply to 1997 new or demonstrator models only and applies to qualified retail customers only. Limited time offers which may not be combined with other offers. See Dealer for details.

Get what you want from your GMC Truck Dealers

