

Royal Trust

REALTOR

CORP. OF CANADA, REALTOR

400 MAIN ST. E., MILTON

Royal Trust
THE SIGN
THAT SELLS

878-8188

The Canadian Champion

Milton Real Estate

Wednesday, November 16, 1983



RE/MAX



miltowne realty corp.
22 ontario st. s.
milton, ont.
878-2365



"Bright, large with convenient ensuite."



"Warm, frolicking family room."



"Cozy neighbourly eat-in style."

"IN TOWN CONVENIENCE"

You'll find this home in a quiet neighbourhood handy to 401 Highway. Approaching the home it's obvious from the brick and aluminum construction, double width concrete driveway, concrete steps and porch leading to the front entrance that here is a well constructed solid property.

As you enter the hallway, to your right, an archway leads into the combination living and dining room with it's wide bright windows across the front.

Walk thru into the dining room and step into the large but cosy kitchen with its eat-in area, overlooking the spacious, warmly panelled family room complete with open brick fireplace. Here you have a cosy place to relax in winter, and with the walkout to patio, a great place to entertain and barbeque in the summer.

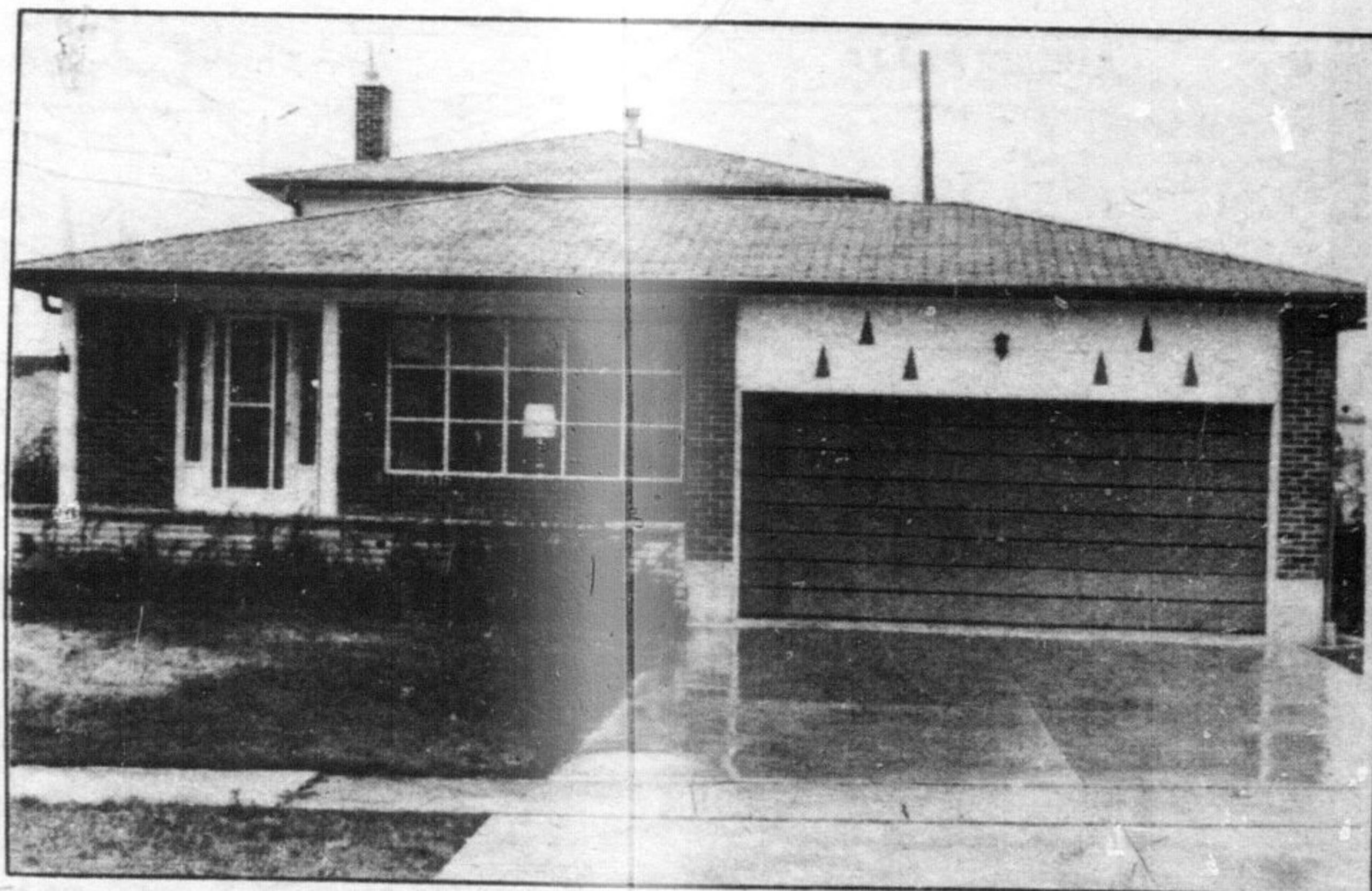
The three bedrooms are away from the living area on another level, together with a 4 piece bathroom. The master bedroom has a 2 piece washroom ensuite.

Returning to the main level, you'll notice the side door leading to a large patio area. There is a convenient adjacent 2 piece washroom, making it a great service area for family use during bad weather. On this same level a den or 4th bedroom complete this true family home of the right dimension.

Now asking \$109,000.

To view, call us now at ROYAL TRUST CORPORATION OF CANADA, 878-8188.

realtor's choice



Solid home in a quiet neighbourhood.