

Real Estate

RE/MAX RE/MAX RE/MAX RE/MAX RE/MAX RE/MAX RE/MAX

RE/MAX mitowne realty corp.

Call **JEAN SNOWDEN**
OFFICE: 878-2365
RES: 878-3155



RE/MAX Above the Crowd!




COUNT THE BONUSES at this 4 bedroom backsplitted—huge fenced lot, walkout from living room, deck and patio, new siding, central vacuum, extra 2 pc. washroom. It all adds up to a terrific buy for you. Call Jean Snowden to see inside this beauty! **\$79,500**

HOOK, LINE AND SINKER! That's how you'll fall for this super 4 bedroom home including extra 2 pc. washroom, mn. fl. laundry, dishwasher, family rm. with fireplace, French doors and walkout to deck. Don't go fishing around! This is the catch you want! Call Jean Snowden. **\$95,500**

RE/MAX RE/MAX RE/MAX RE/MAX RE/MAX RE/MAX RE/MAX

RE/MAX RE/MAX RE/MAX RE/MAX RE/MAX RE/MAX RE/MAX

Announcement

RE/MAX Above the Crowd!



RE/MAX mitowne realty corporation is pleased to announce the appointment of HAZEL HORTON to its staff of real estate representatives.

Hazel is a Milton resident and through her previous experience in real estate has become familiar with the market place. She is very enthusiastic about becoming a part of the RE/MAX team and is pledged to giving full time maximum service.

Contact Hazel for assistance with your real estate needs.

HAZEL HORTON
OFFICE: 878-2365
RES: 878-1590

RE/MAX mitowne realty corp. 

RE/MAX RE/MAX RE/MAX RE/MAX RE/MAX RE/MAX RE/MAX

Royal Trust Real Estate

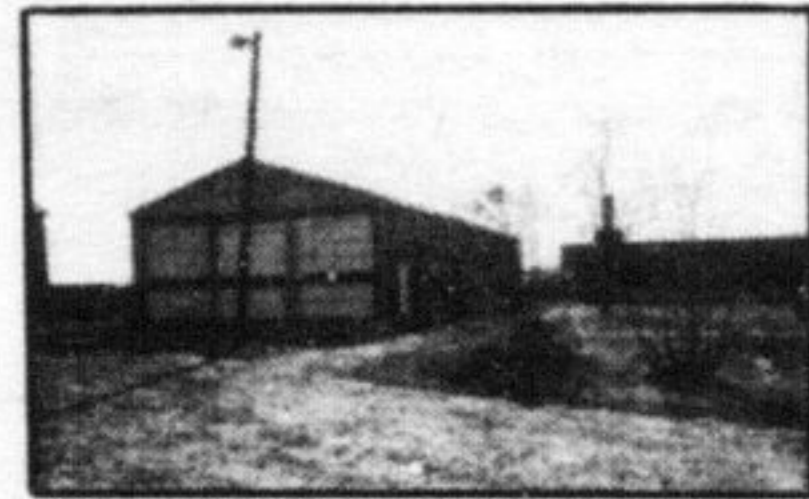
ROYAL TRUST CORPORATION OF CANADA, REALTOR



Toronto Line
826-9707

400 MAIN ST. E., MILTON

878-8188



INDUSTRIAL INVESTMENT. 3 1/2 Acres on Main Street, Milton. 3 bay garage, fully serviced—400 amp electrics. Area is lighted with loading ramp. \$298,000. Call **RON NORTH 878-8188.**



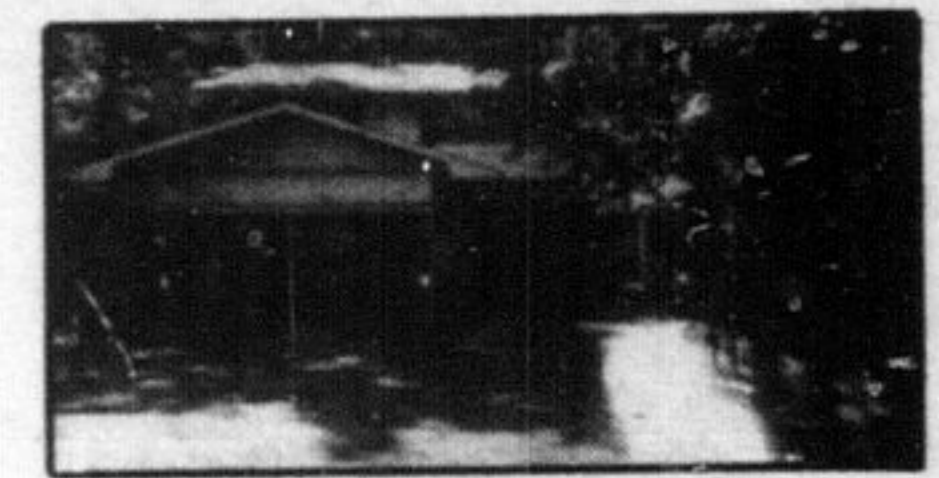
HURRY OUT! TOO GOOD TO MISS! Spacious & comfortable home with large master suite, walk-out from dining room and 2 baths. Only \$71,900. **DENISE KERSLAKE 878-8188.**



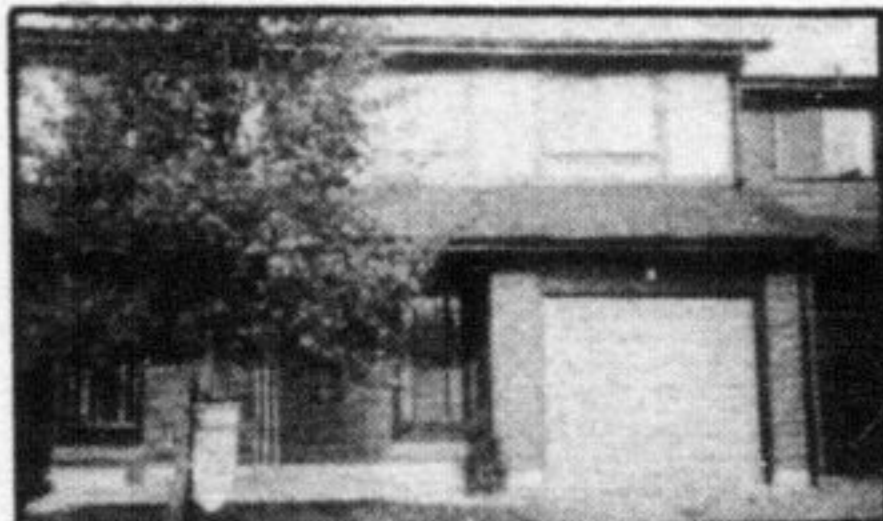
10 ACRE ESTATE LOT. Beautiful property located approx. 3 miles southwest of 401. Partially wooded, spring fed pond and garden soil. \$79,900. **DENISE KERSLAKE 878-8188.**



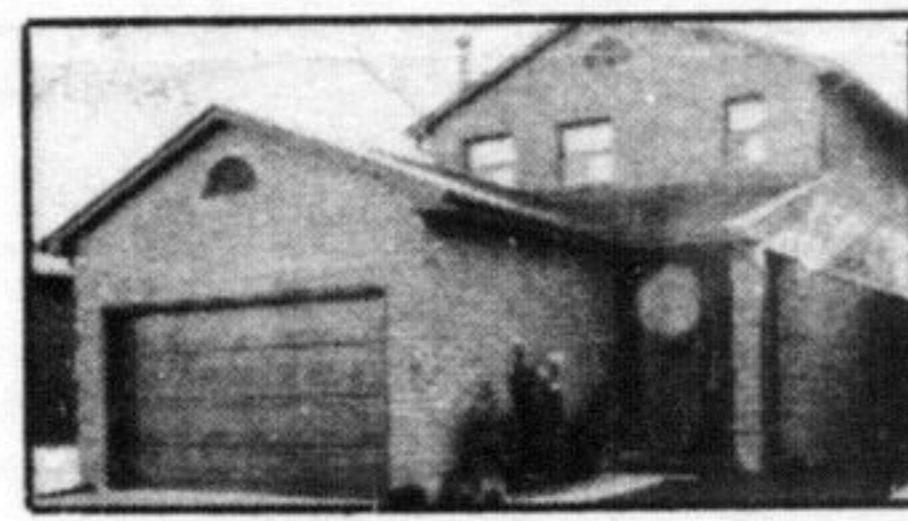
WHY PAY RENT—CALL NOW. 2 storey, 4 bedroom large townhouse. Bright and attractive end unit with the advantages of a semi-detached. Desirable 250 Setok. Call **ED PROVEAU 878-8188.**



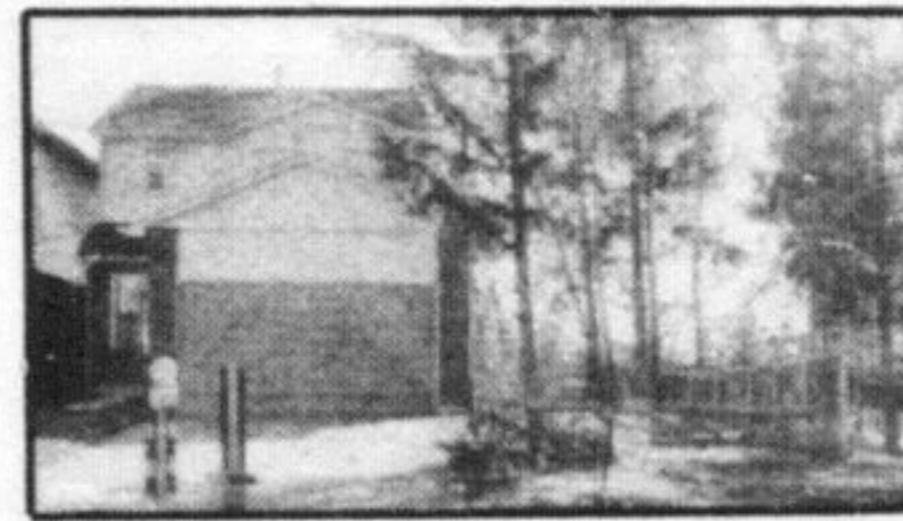
CAMPBELLVILLE BEAUTY. Large comfortable 4 bdrm home on 3 plus acres. Family room with fireplace, rec room with wood stove, etc. Be settled for Xmas. \$159,900. **LYNN GORDON 878-8188.**



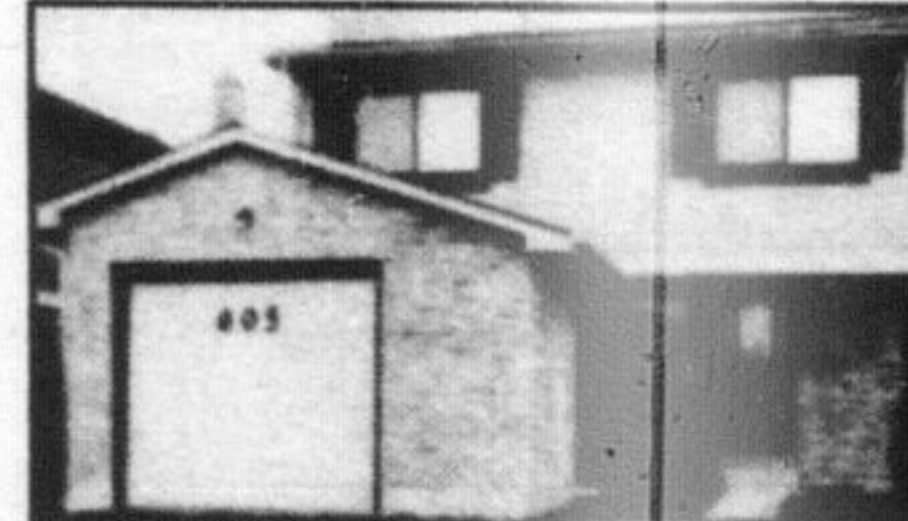
TOWNHOUSE. Spacious 4 bedroom, 1 1/2 baths. Full basement which would be great for future rec room. Very clean and tidy. Call **BETTY BRADING 878-8188**



2 STOREY DETACHED \$84,900. Brick and aluminum, 3 bedrooms, family room with fireplace, fenced garden, double garage. Call **SUZANNAH JOHNSTON 878-8188.**



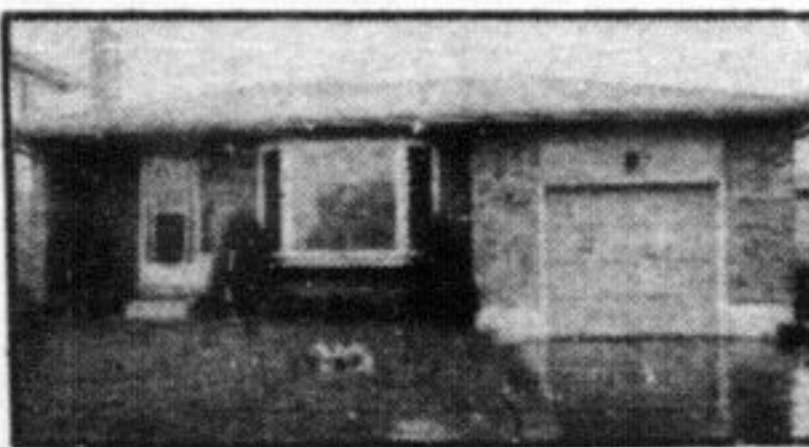
HUGE LOT! DRIVE OUT NOW! Spacious, comfortable home near schools & shopping. Panelled family room, 2 piece ensuite. Only \$80,900. **AUDREA LEAR-COSTIGAN or DENISE KERSLAKE 878-8188.**



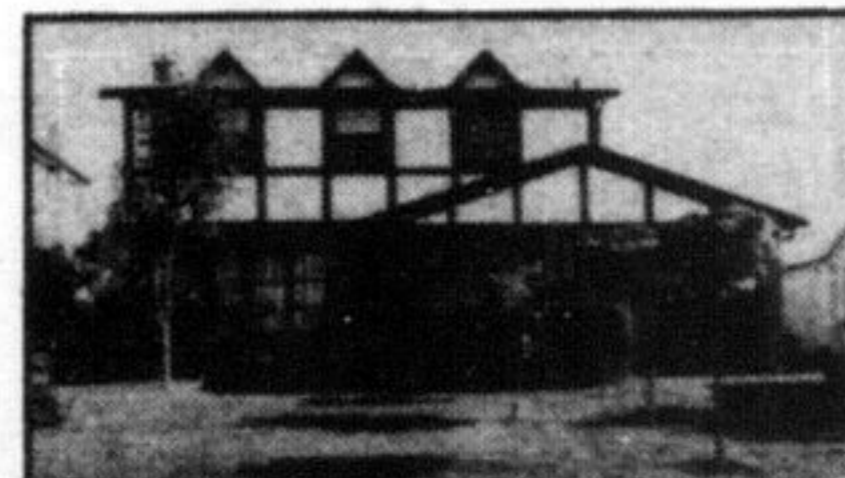
DETACHED AT SEMI PRICES. Only \$76,900 for this excellent family home with main floor family room, fireplace, large living room with cathedral ceiling overlooking dining room, & walkout to fenced yard. **SYLVIA BURSEY 878-8188.**



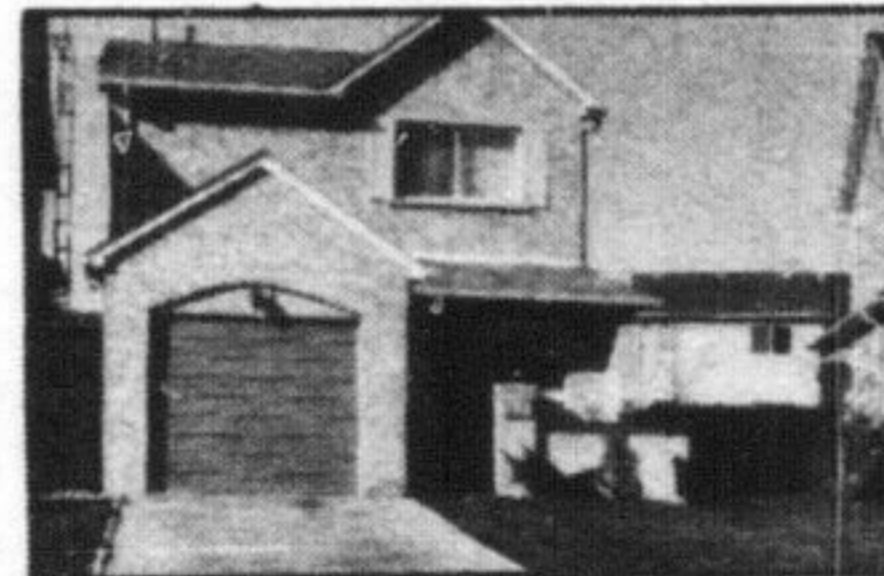
QUIET CRESCENT IN TOWN. Unique 4 bedroom brick home on Ravine lot. Cosy main floor family room with fireplace. A property well worth seeing. Call **BILL LENIZKY 878-8188.**



PRICED DROPPED \$5,000. Vendor anxious. Neat backsplitted on 50 x 120 ft. lot in Timberlea. Huge kitchen, nicely finished family room with fireplace. Asking only \$87,900. Call **SYLVIA BURSEY 878-8188.**



LARGE DORSET PARK HOME needs a big family. 4-5 bdrms., family room, rec room, eat-in kitchen. 3 Fireplaces, fenced yard. Totally immaculate. \$97,900. Call **LYNN GORDON 878-8188.**



JUST LISTED \$84,900. Large 4 bedroom home. Huge master with ensuite, fireplace in living room, separate dining room, bright eat-in kitchen, finished rec room. For appt. call **SYLVIA BURSEY 878-8188.**



SECLUDED ELEGANCE in Campbellville. Architecturally designed cedar & glass home on 25 wooded acres with 2 streams. \$219,000. To view call **LYNN GORDON 878-8188.**

TAKE A DRIVE THIS SUNDAY and drop by the **OPEN HOUSE** from 1:00-4:00, 6606 Pantou St., Kildride. 3 or 4 bedroom backsplitted on 1/2 acre. Call Carol Free for directions, 878-8188.

NEW LISTING. Immaculate 3 bedroom townhome. 2 1/2 baths, nicely decorated. A must to see. Asking \$52,900. Call **A. LEAR-COSTIGAN 878-8188.**

STABILITY, INTEGRITY AND HIGH PROFESSIONAL STANDARDS

There's an advantage to working with Royal Trust, one of Canada's leading residential real estate brokers.

AL CARTER 878-8138
BETTY BRADING 878-6716
SYLVIA BURSEY 878-1038

SHIRLEY CHABAN 878-0615
CAROL FREE 335-4486
LYNN GORDON 854-2719

SUZANNAH JOHNSTON 845-4092
DENISE KERSLAKE 876-1735
AUDREA LEAR-COSTIGAN 878-9151

BILL LENIZKY 853-3797
RON NORTH 335-1526
ED PROVEAU 876-1707

LORRAINE RANDALL 878-7101
CONNIE REYNOLDS 854-2337
DCUG SAWYER 854-2247