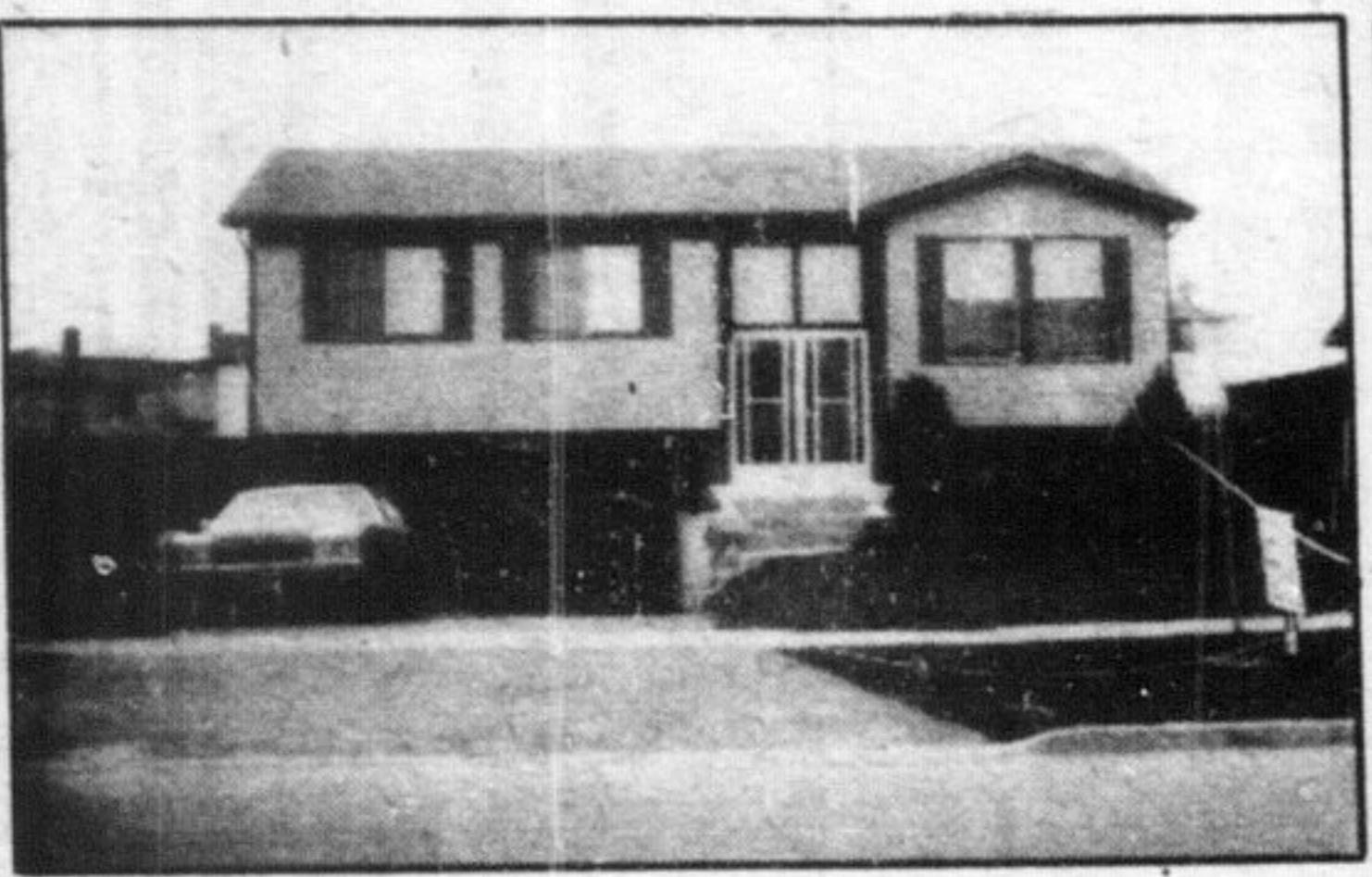


A.E. LePAGE
REAL ESTATE SERVICES LTD. REALTOR



OPEN HOUSE

Sunday, August 7th, 1983

2 p.m.-4 p.m. 547 WOODWARD AVENUE

Stella Hall in attendance.

389 MAIN ST., MILTON

878-8101

real estate

INSURANCE DIRECTORY

"ALL THE CHOICE IN THE WORLD"



PETER R. SHERRY INSURANCE

ALL CLASSES OF INSURANCE

ALL THE CHOICE IN THE WORLD



855 SYER DRIVE
MILTON, ONTARIO 878-6774

"ALL THE CHOICE IN THE WORLD"



AUSTEN & NOBLE
INSURANCE BROKERS LTD.

"ALL THE CHOICE IN THE WORLD"



205 MAIN STREET, MILTON
878-7217
"WE SELL ALL CLASSES OF INSURANCE"

"ALL THE CHOICE IN THE WORLD"

McCaig INSURANCE LTD.

208 Main Street E., Milton L9T 1N8 878-2894

KNIGHT INSURANCE
BROKERS LIMITED
Don Knight, A.I.I.C.

17 Wilson Drive
Milton

878-8459

"ALL THE CHOICE IN THE WORLD"

FITZGERALD INSURANCE
BROKERS LTD.

216 Main St., Milton, Ont.

"ALL THE CHOICE IN THE WORLD"

YOUR INDEPENDENT AGENT
SINCE 1934
878-2326

Your Personal Agent Is Always At Your Service

DON'T FORGET! SEE RE/MAX

miltowne realty
LISTINGS



ON THE BACK PAGE

THEN CALL

878-2365



"OUR STRENGTH IS OUR PEOPLE"



ILONA NICHOLSON



PAULINE HOBBS

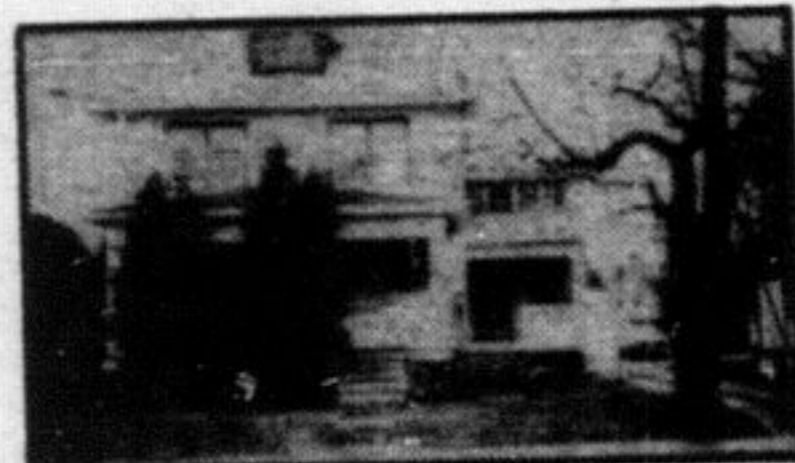


EVA GOODING



NEW LISTING

3 Bdrm. raised bungalow in Timberlea, finished fam. rm. with fir. to ceiling fireplace, 3 bathrms. \$97,800.00. Call Suzanne Groom. M3109



4 BEDROOM

This property has commercial potential with a possible second floor apartment, \$125,000.00. Call Wayne Casson. M3011



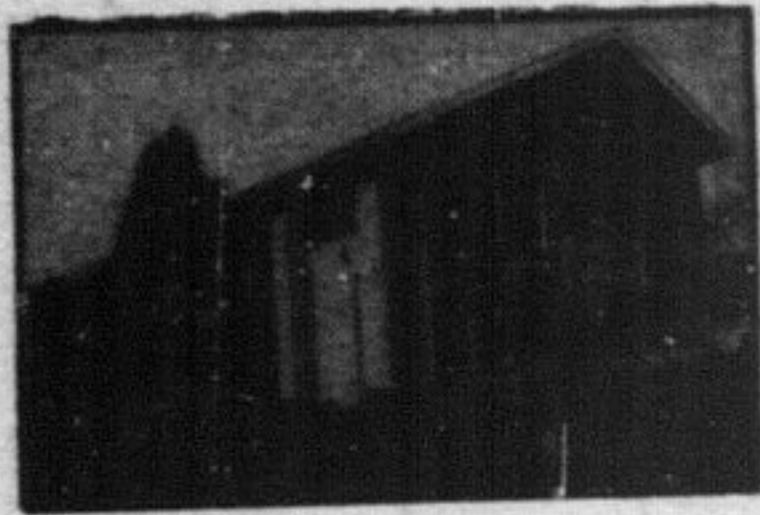
REDUCED—MOVE IN TODAY

Over 1500 sq. ft., 4 bedrooms, 2 baths, oversized garage, deck, 2 sliding glass doors and corner brick fireplace. Now only \$76,500. Call Dave Addison. M3020



**APPROX. 1800 SQ. FT.
\$84,500.00**

Comes complete with 3 large bedrms., 3 baths, main floor family rm., 2 walkouts, 10.8% Mtge., dble. garage, large lot. Call Eva Gooding or Suzanne Groom. M3057



THINK BIG "MILTON"

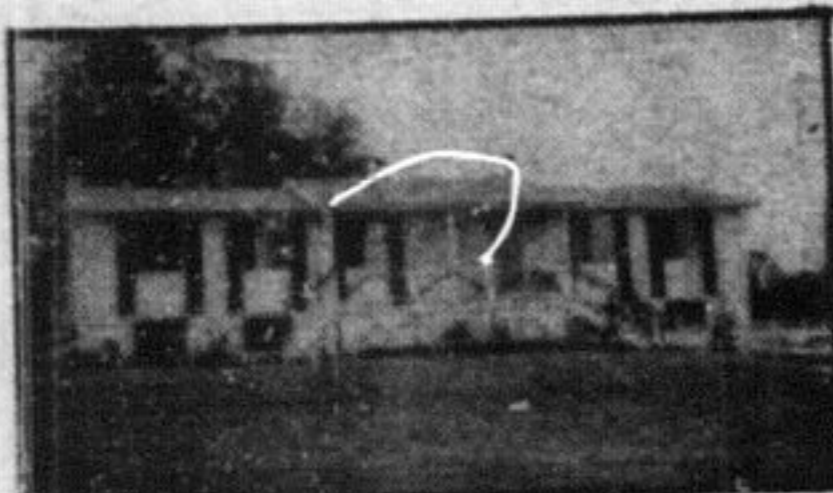
155 plus seater church offers excellent location, 2 portables, lots of parking, lot size 100 x 220. Call Brian Green. M3076

FOR LEASE

1500 Sq. Ft. on Main Street. Call Bill Currie to view. BC1

COTTAGE COUNTRY

Over 2 1/2 acres of mixed bush with spring surveyed and marked only \$8,500. Located south of Haliburton & North of Minden. Call Dave Addison. M3074



**FOR THE LARGE FAMILY
COUNTRY LIVING AT ITS BEST**

Just what the doctor ordered, country living, pleasant fields, 2 homes on this 10 acre parcel. Barn, sauna. To view please call Margaret Boyd. M3105



GREAT STARTER

Reduced to sell, \$68,900, 3 bedrooms, newly upgraded carpet, beautifully decorated, close to schools and shopping. Call Brian Green. M3042



IDEAL STARTER HOME

Spacious 3 bedroom semi, located in a mature area, features eat in kitchen, dining rm., 2 baths, large basement, double paved driveway, listed at \$67,900. Call Eva Gooding. M3111



WALK YOUR OWN 2 ACRES

Treed lot. With this very elegant 4 bedroom home, well appointed kitchen (eat-in), roomy living room with fireplace. Space is the word for this home with rec. room with fireplace and lots more. Call Stewart Haddon. M3101



IMMACULATE PLUS

This three bedroom charmer comes complete with a huge eat in kitchen, separate living room, finished rec. room, fireplace, extra wash-room and 4th bedroom or den. All for only \$77,900.00. Call Bill Currie. M3110



COMPARE—CAMPBELLVILLE SOUTH

And you will stop looking, 5 acres, 5 bedrooms, Florida room, large living room with fireplace. Custom built, 8 years old. V.T.B.M. \$142,900. Ask for Ilona Nicholson. M3022

89 ONTARIO ST. N., MILTON 876-1156

Tor. (416) 826-6390

SUZANNE GROOM
STEWART HADDON
EVA GOODING
WAYNE CASSON

878-5261
878-3574
876-1641
878-0466

MARGARET BOYD
BRIAN GREEN
BILL CURRIE
ILONA NICHOLSON

876-4434
878-0322
878-4944
864-9883

DAVE ADDISON
SANDI KINSALE
PAULINE HOBBS
ELLEANOR ALEXANDER

878-7079
876-2567
878-7747
853-0532