

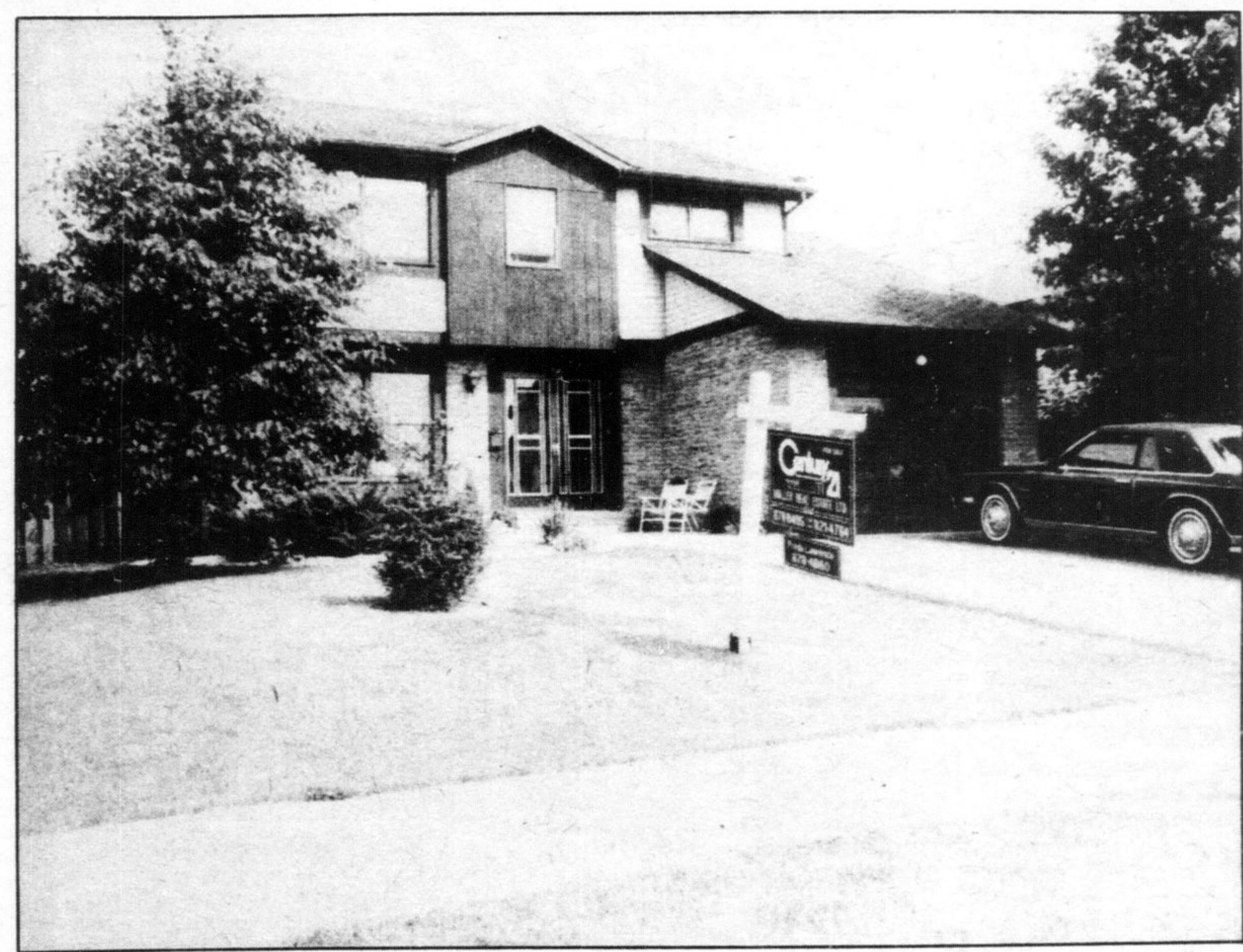
**Royal Trust**  
 REALTOR  
 CORP. OF CANADA, REALTOR  
 400 MAIN ST. E., MILTON  
 878-8188

# The Canadian Champion

## Milton Real Estate

Wednesday, August 3, 1983

**RE/MAX**  
 milton realty corp.  
 22 ontario st. s.  
 milton, ont.  
 878-2365



A nicely landscaped lot is the setting for this home which has a single car garage attached.

## CATHEDRAL CEILINGS ACCENT THIS HOUSE

After admiring this beautiful landscaping, you enter the elegant home through double doors to a bright, spacious foyer with parchment beige ceramic tiles that are extended through the kitchen and dinette.

The new Scandinavian kitchen provides superior lighting and cupboards that answer every woman's dream. A bright spacious dinette adjoins the kitchen and opens into a large, cheery family room with cushiony-soft broadloom, a log-burning fireplace bricked to the cathedral ceiling and patio walkout to the pool-sized rear yard with full privacy fence and utility shed.

For more formal entertaining, the living room and dining room have new top quality broadloom which is also extended up the stairs. The ground floor also provides a convenient laundry room and two piece washroom.

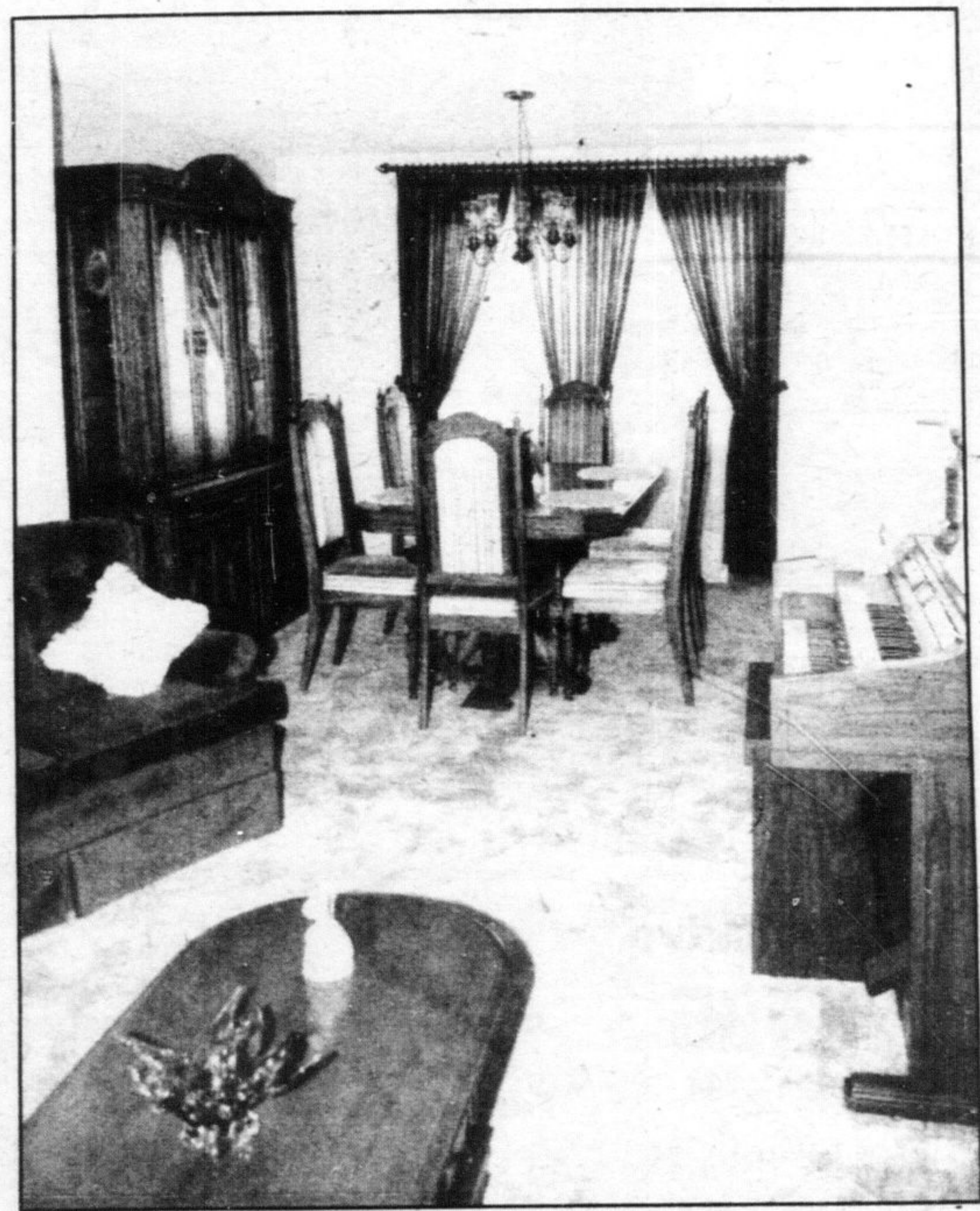
The upper level provides four good sized bedrooms and a four-piece washroom. The king sized master has a walk-in closet. All bedrooms are tastefully decorated and broadloomed coinciding with the exceptional decor on the lower level.

Insulation has been added in the full basement which has a dust proof painted floor and high ceiling.

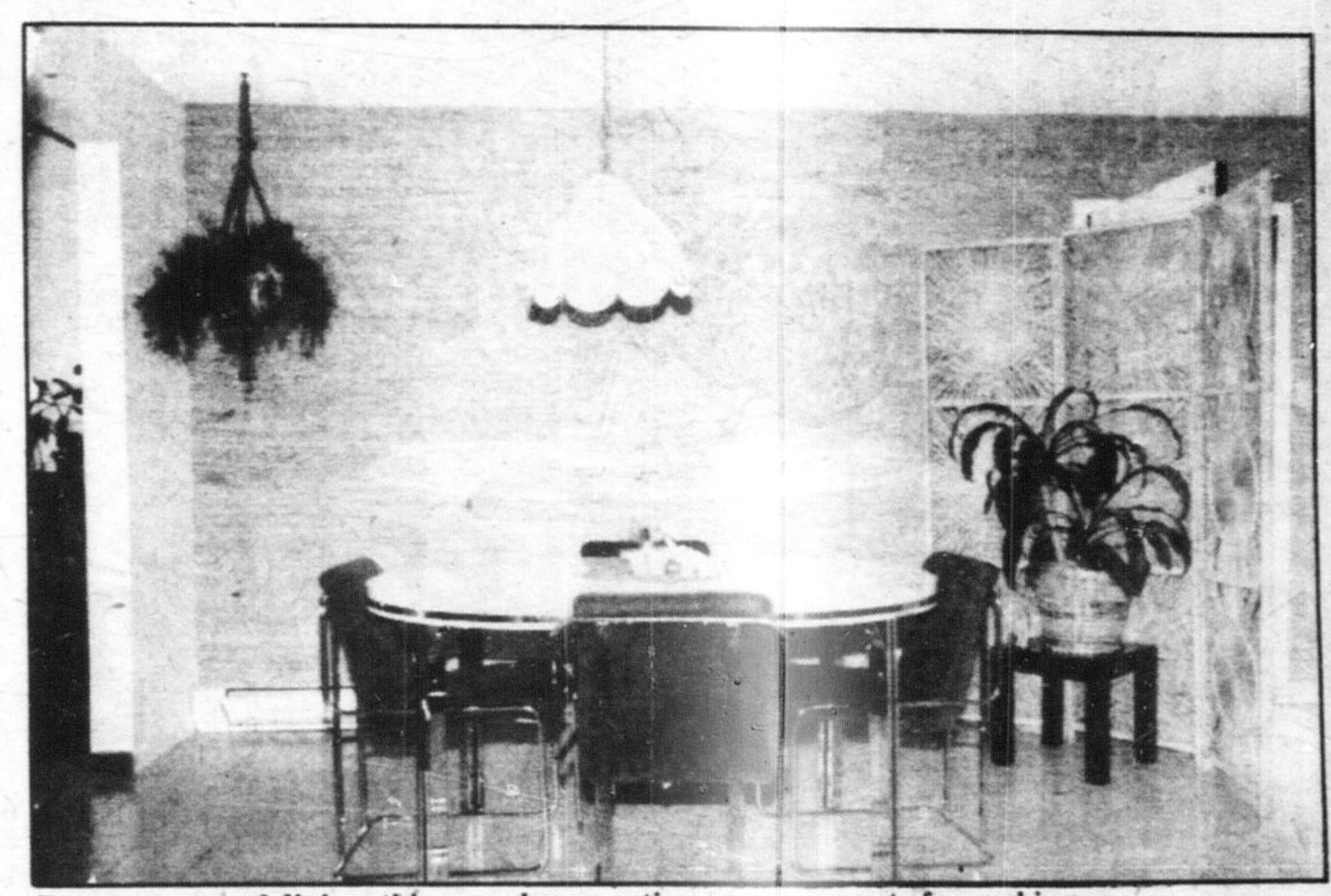
This house has been extended with top quality construction, making it a luxurious family home in a good location at the affordable price of \$102,500.00.

To view this home of the week please call Century 21 Golden Real Estate Limited at 878-8495.

## realtor's choice



A beautifully broadloomed formal dining room complete with a large window adjoins the living room.



For more casual dining, this room keeps eating space separate for cooking space.