

# Driver injured

Five people escaped serious injury Friday morning in a collision involving two transport trucks and a station wagon.

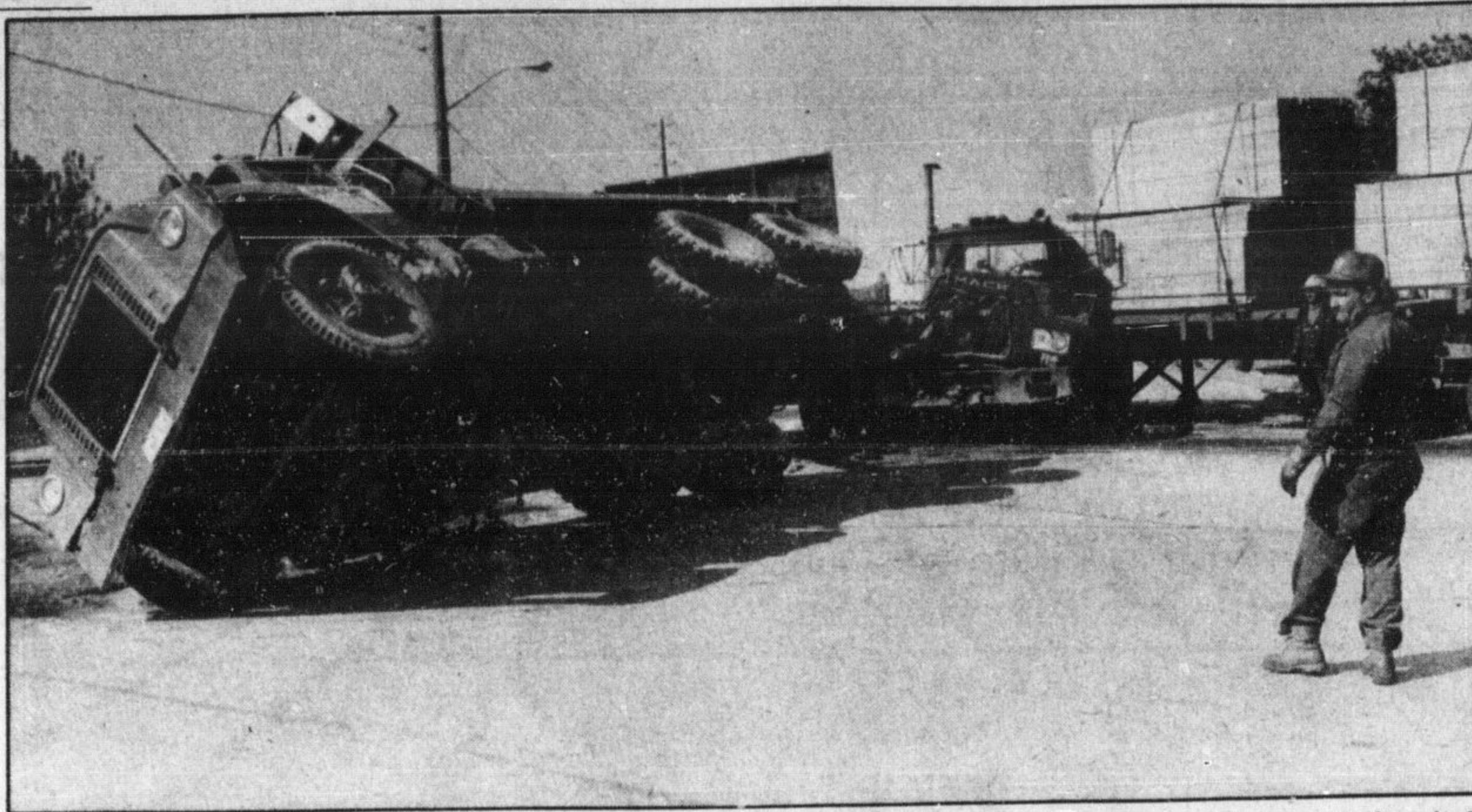
Bill Hamilton of Milton, the driver of one of the trucks, was taken to Oakville Trafalgar Hospital and was released the same day with only minor injuries.

Mr. Hamilton's truck was travelling south on Hwy. 25 when it collided with a truck driven by David B. Hunt, 20, of R. R. 1 Troy, Flamborough. The two trucks then hit a light standard and a station wagon.

Three Hamilton men, inside the car, were not injured in the crash.

The station wagon was just stopped at the light when the two trucks, laden with lumber, hit it, said an OPP spokesman.

Milton OPP have charged Mr. Hunt with failing to stop for a red light in the accident which caused extensive damage to both trucks.



An early morning collision Friday, involving two transport trucks and a station wagon sent one man to hospital with minor injuries, and left several loads of lumber scattered over the junction of Highways 25 and 5. One of the drivers has been charged with failing to stop at a red light.

(Picture by Irv Mintz)

# Police negotiations arrested

By ALEX MATHESON

Contract negotiations between the Halton Police Association and the Halton Regional Commissioners of Police have broken down with the officers having rejected the commission's "final offer."

Both sides agree the main issue in dispute is the interrelationship between the contract for the officers and the contract for the police department's civilian employees.

Treasurer of the police association Sgt. Gary Bogue, said that the commission is trying to force the officers to accept something they don't want in order that the civilians be given something they do want.

Sgt. Bogue stressed that they are two separate contracts.

One of the main issues for the officers is the reduction in pay demanded by the commission for constables working as detectives in the criminal investigation bureaus. Currently they have been paid sergeants' rates, which is about \$2,200 a year more than the \$31,285 that first-class constables get, said Sgt. Bogue.

He said the commission wants these detectives to accept pay at a rate between the two. That would mean a loss of about \$1,100 per man and it would affect about 40 constables.

If the commission wants concessions in this area it must be prepared

to give the benefits back somewhere else, added Sgt. Bogue.

The number of officers involved accounts for about three-quarters of the strength of the C.I.B. units.

The commission is countering this refusal to agree by putting detectives back in uniform to do essentially the same job, he said.

He said this is being coupled with a change in title for the investigator.

Now the public, instead of being told that a "detective will be around" are told that "the investigating officer will be around," said Sgt. Bogue.

The arrival of a police officer at a person's home is now more conspicuous, added Sgt. Bogue.

For the civilian staff, an increase of \$1,000 annually can be granted for those making less than \$20,000. Others are bound to a five per cent hike, said Sgt. Bogue.

He added that pay increases have been in effect since the first of the year.

Sgt. Bogue said the commission want to tie the \$1,000 increase to civilians with the officers' contract. "It is not bargaining in good faith if agreement on one contract hinges on another," he added.

The commission's final offer was brought to the membership and rejected by the majority at a meeting, said Sgt. Bogue.

Announcing...

## Cheers presents their new menus.

### Dinner menu

from escargot to surf 'n turf, from seafood cocktail to coq au vin, . . . a new repertoire of salads, entrees & a tempting dessert tray

### Luncheon menu

Soups, salads, burgers, sandwiches galore, dessert tray and other specialties, plus daily luncheon specials

### "Nibblers" menu

for those in between times . . . a selection of snacks and light meals to tempt your palate

GOOD FOOD AT REASONABLE PRICES

# Cheers

400 Main St.  
Milton

876-4444

**CANADIAN STAR PAGEANT**

• BEAUTY • MODEL • TALENT

ENTER NOW!  
Phone or Write

Open to All Age Divisions:  
• Beauty Girls 2 27 Yrs & Boys 3 7 Yrs  
• Model Girls 3 30 Yrs & Boys 3 30 Yrs  
• Talent Males & Females 3 30 Yrs (Single Performers or Groups)

OVER \$15,000 IN PRIZES

Saturday, June 25th & Sunday, June 26th  
Toronto Harbor Castle Hilton Hotel

• Paganant finale will be highlighted with a special appearance of the Canadian Star Showband and Dancers featuring Prima Ballerina LUBICA DOBALOVA

• Spector Tickets can be purchased at the door or through major ticket agents. OR WRITE: CANADIAN STAR PAGEANT, 7 QUEEN ST. EAST, SUITE 151 TORONTO, ONT. M5C 1P7

FOR ENTRY FORM PHONE: (416) 927-1627

**9th Annual FISHING DERBY**

to be held at Burns Nature Area

by the HALTON REGION CONSERVATION AUTHORITY

Saturday, June 4/83  
8:30 a.m. - 3:30 p.m.  
Sunday, June 5/83  
8:30 a.m. - 6:00 p.m.

- The derby is open to all ages.
- Registration is \$3.50 per person for the weekend. Children under 12 & Senior Citizens \$1.50 for the weekend.
- Prizes will be awarded each day for specific categories.
- Refreshments & Hot Dogs available.
- Early Bird Breakfast Special: Pancakes served free for first 75 people to register for the Derby each morning.

Last year over 400 people attended the derby. The prize winning catch was 26". This year the Conservation Authority will be stocking the pond with 8" - 24" rainbow trout just for this event.

Burns Nature Area is located on No. 10 Side Road at the 1st Line NW of Campbellville. Take the Guelph Line interchange off Hwy. 401 and proceed North to No. 10 Side Road, then proceed West to the 1st Line.

For further information please call 878-4131 or 854-2741.

Ministry of Municipal Affairs and Housing Ontario

**NOTICE**

The Ontario Planning and Development Act R.S.O. 1980, C 354, Section 6(1) (b) and The Parkway Belt Planning and Development Act, R.S.O. 1980, C 368

The Minister of Municipal Affairs and Housing has initiated an amendment to the Parkway Belt West Plan, July 1978, as requested by the Council of the Corporation of the City of Brampton. The amendment proposes various redesignations of certain lands in the City of Brampton that are generally located between Torbram Road and Eighth Line East (Gorewood Drive). The most significant redesignation is to allow for industrial development on approximately 100 ha (250 acres) of land in addition to the existing 200 ha (500 acres) of industrially designated land in the area.

A copy of the proposed amendment together with the material used in preparation thereof can be examined at:

- Office of the Minister of Municipal Affairs and Housing, c/o Plans Administration Branch, 56 Wellesey St. W., 8th Floor, Toronto, Ontario M7A 2K4
- City of Brampton, c/o Planning Department, 150 Central Park Drive, Brampton, Ontario L6T 2T9

Comments and submissions on the amendment may be made to the Minister of Municipal Affairs and Housing until the 10th day of June, 1983 at the above address.

Claude F. Bennett  
Minister of Municipal Affairs and Housing

**SIDER PRODUCE**

327 BRONTE ST. S. BRONTE ST. S. between DERRY RD. & MAIN ST., MILTON

STORE HOURS:  
Mon.-Fri. 9.00 a.m.-9.00 p.m.  
Saturday 8.30 a.m.-8.00 p.m.  
Sunday 10.00 a.m.-5.00 p.m.

Why Shop the Giant Food Store?

LOW PRICE SERVICE & QUALITY

Smiles are always FREE!

Prices in effect until June 7/83.

FOR ALL YOUR GARDENING NEEDS SIDER PRODUCE

**GARDEN CENTRE IS NOW OPEN**

SUNLIGHT LIQUID DISHWASHING DETERGENT 500 mL <b>.99</b>	Menu Making		MEATS		Priced Right	SCHNEIDER CHEESE Individually Wrapped 16 Single Slices 500 g pkg. <b>2<sup>79</sup></b>
VALLEY FARM FRENCH FRIES 1 kg pkg. <b>.49</b>	CUT FROM GRADE "A" BEEF T-BONE STEAKS <b>3<sup>63</sup> lb. 7.99 kg</b>	CUT FROM GRADE "A" BEEF SIRLOIN STEAKS <b>3<sup>18</sup> lb. 6.99 kg</b>	REGULAR GROUND BEEF "FRESH DAILY" <b>1<sup>29</sup> lb. 2.84 kg</b>		LEAVER PIECES & STEMS MUSHROOMS 10 oz. <b>.69</b>	MAPLE LEAF TENDERFLAKE PURE LARD 1 lb. pkg. <b>.88</b>
ALLEN'S APPLE JUICE 48 oz. <b>.99</b>	CUT FROM GRADE "A" BEEF WING STEAKS <b>3<sup>18</sup> lb. 6.99 kg</b>	CUT FROM GRADE "A" BEEF SIRLOIN STEAKS <b>3<sup>18</sup> lb. 6.99 kg</b>	SWIFT'S PREMIUM WIENERS 454 gram <b>1<sup>29</sup> pkg.</b>		GLADE FLO THRU 2WAY AIR FRESHENER <b>.99</b>	LEAVER PIECES & STEMS MUSHROOMS 10 oz. <b>.69</b>
CANADA PURE WHITE VINEGAR 4 litre <b>1<sup>69</sup></b>	SIDES OF BEEF OR VEAL <b>1<sup>69</sup> lb. 3.72 kg</b>	FRESH ONTARIO LAMB Legs of Lamb <b>2<sup>99</sup> lb. 6.58 kg</b>	COUNTRY MANOR BACON 500 gram <b>1<sup>89</sup> pkg.</b>	McCORMICK'S SOCIAL TEA BISCUITS 400 gram pkg. <b>.98</b>		GLADE FLO THRU 2WAY AIR FRESHENER <b>.99</b>
JAVEX BLEACH 128 oz. <b>1<sup>29</sup></b>	Brand New DELI COUNTER		Cut Fresh		McCORMICK'S SOCIAL TEA BISCUITS 400 gram pkg. <b>.98</b>	
SURTEC GARBAGE BAGS 10 PLUS 5 EXTRA <b>1<sup>29</sup></b>	FRESH SLICED COOKED HAM <b>1.99 lb. 4.38 kg</b>		SWISS CHEESE "SLICED OR BY THE PIECE" <b>2.99 lb. 6.58 kg</b>		FAB POWDER DETERGENT 6 litre <b>3<sup>49</sup></b>	
NESTLE QUIK Chocolate or Strawberry Syrup 350 mL <b>.99</b>	BRANDT MOCK CHICKEN <b>1.99 lb. 4.38 kg</b>		ITALIAN ROMANO CHEESE "GRATED OR BY THE PIECE" <b>4.54 lb. 9.99 kg</b>		KRAFT MIRACLE WHIP 500 mL <b>1<sup>19</sup></b>	
McCAIN FROZEN PEAS 1 kg. pkg. <b>1<sup>49</sup></b>	PRODUCE OF U.S.A. CAN. NO. 1 LETTUCE <b>.59 each</b>	PROD. OF ONT. ENGLISH CUCUMBERS Large Size <b>.89 each</b>	PROD. OF U.S.A. CAN. NO. 1 TOMATOES Large Size <b>1<sup>29</sup> lb. 2.84 kg</b>	PROD. OF U.S.A. PEACHES <b>.99 lb. 2.18 kg</b>	AYLMER TOMATO JUICE 48 oz. tin <b>.98</b>	
	PRODUCE OF U.S.A. STRAWBERRIES <b>.99 pint</b>	PROD. OF U.S.A. CANTALOPES <b>.79 each</b>	"PICK YOUR OWN" RED POTATOES 3 lbs. <b>1<sup>00</sup> .75 kg</b>	PROD. OF NEW ZEALAND GRANNY SMITH APPLES <b>.79 lb. 1.74 kg</b>		