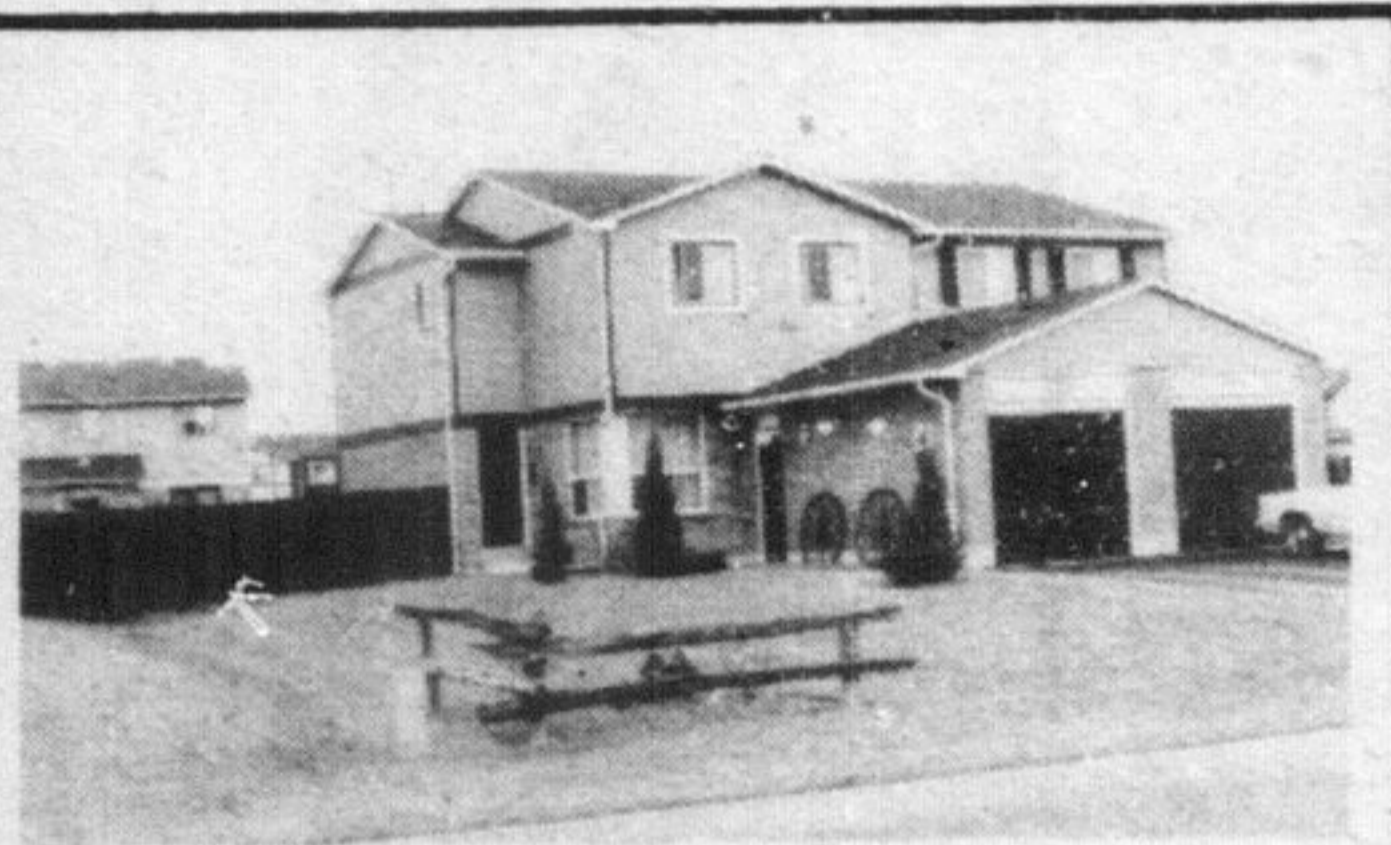
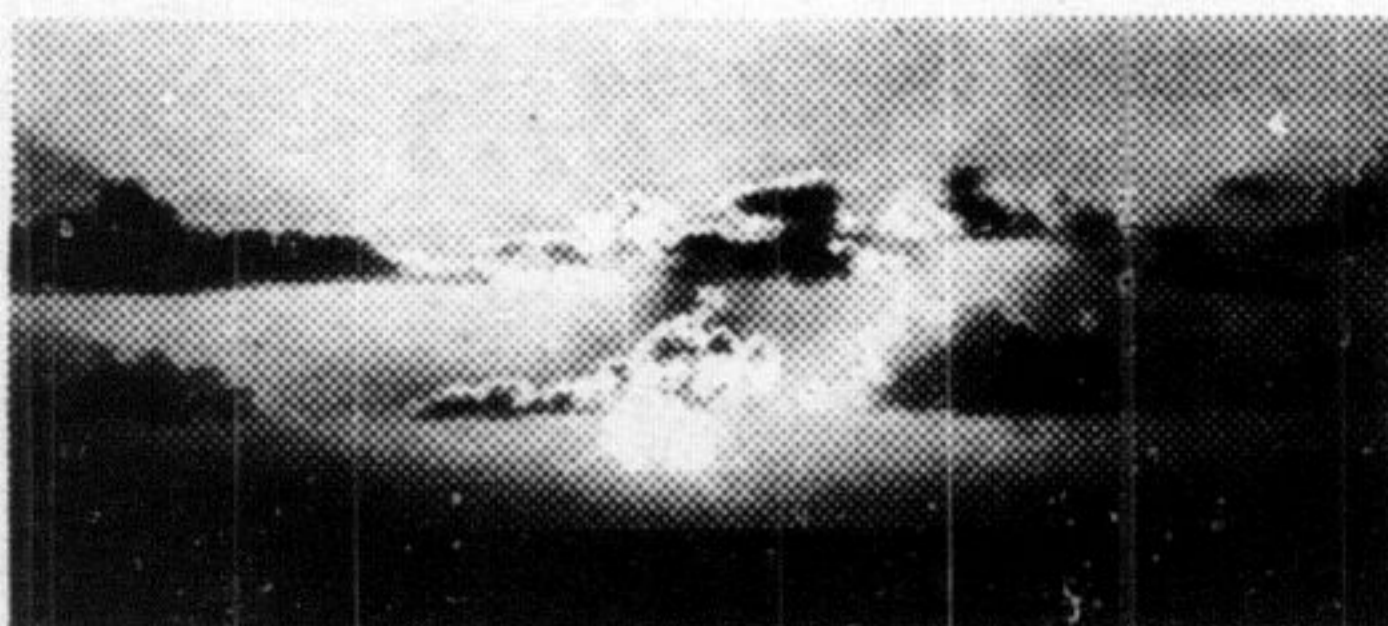


# real estate



**\$68,900**  
**LARGE CLEAN SEMI**  
 with garage, 3 bedrooms, 1 1/2 baths on good size lot. Upgraded broadloom and many extras including a 10 3/4 % mortgage.  
 CALL 878-8718 AFTER 5:00 P.M.

Out there is a restless agent who should now be with the strong.



Work out the math. Royal Trust is one of the most powerful real estate organizations across Canada. Our name opens doors. This is no time to be restless. It is a time to act. Call us for a confidential interview.



**Royal Trust**  
 Real Estate Services

400 MAIN ST. E., MILTON  
**Alan Carter**  
 878-8188

RE/MAX RE/MAX RE/MAX RE/MAX RE/MAX

**ANNOUNCEMENT**

**RE/MAX**

miltoyne realty corp.  
 22 ontario st. s.  
 milton, ont.

Takes great pleasure in announcing the appointment of **LINDSAY J. McLAREN** to its staff of real estate sales representatives.



*Above the Crowd!*



Lindsay J. McLaren

**WHY is this man Above the Crowd?**

- He has been Milton's top producer for the last four years.
- He has been consistently honoured as a top achiever in M.L.S. listing and sales on the Oakville Real Estate Board and stood in first place for two consecutive years.
- He has almost five years experience in the real estate field.
- He is a full time agent, pledged to giving you maximum real estate service.

CALL LINDSAY

OFFICE 878-2365

RES. 854-2451

RE/MAX RE/MAX RE/MAX RE/MAX RE/MAX



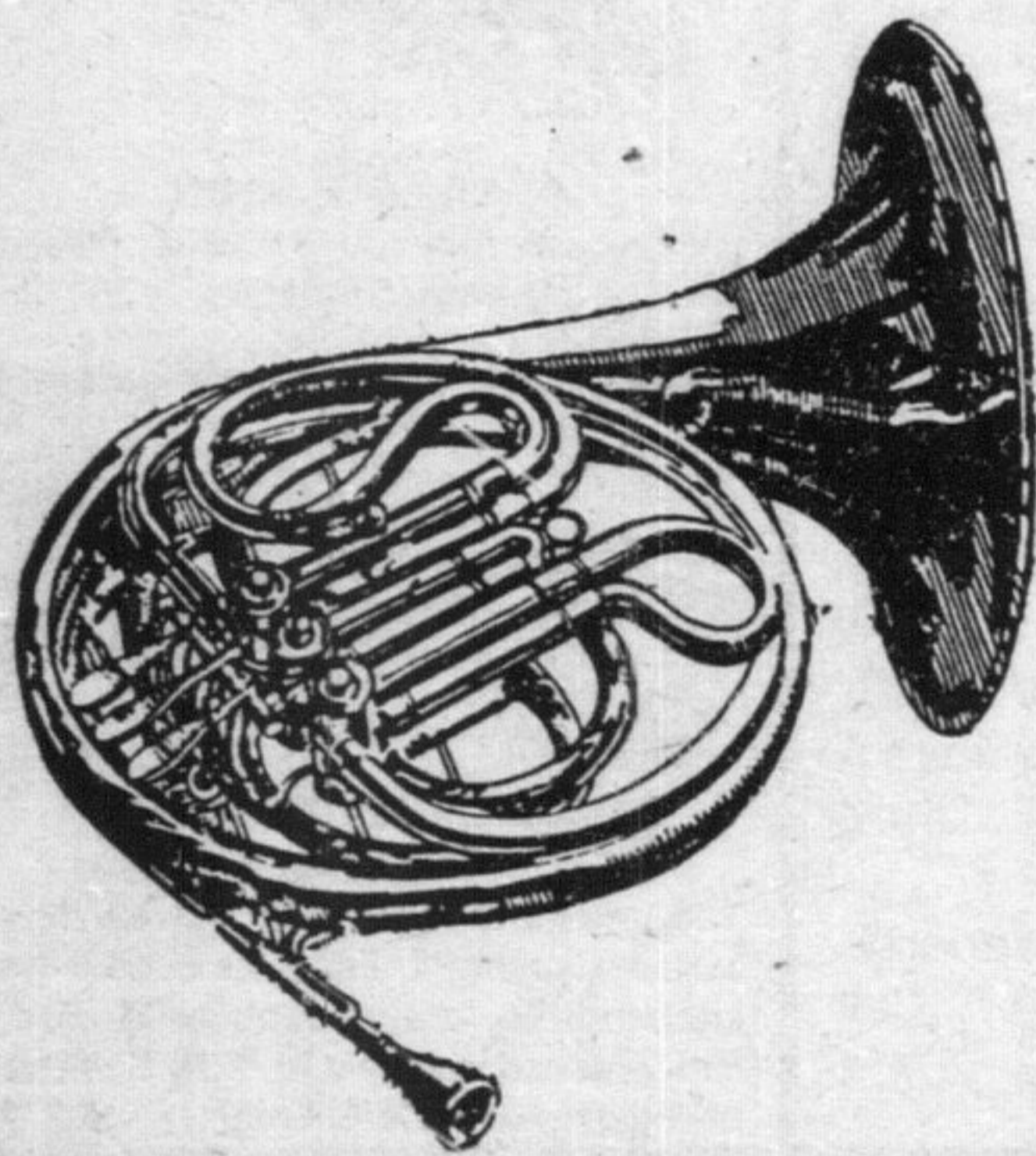
# Royal Trust

400 MAIN ST. E., MILTON

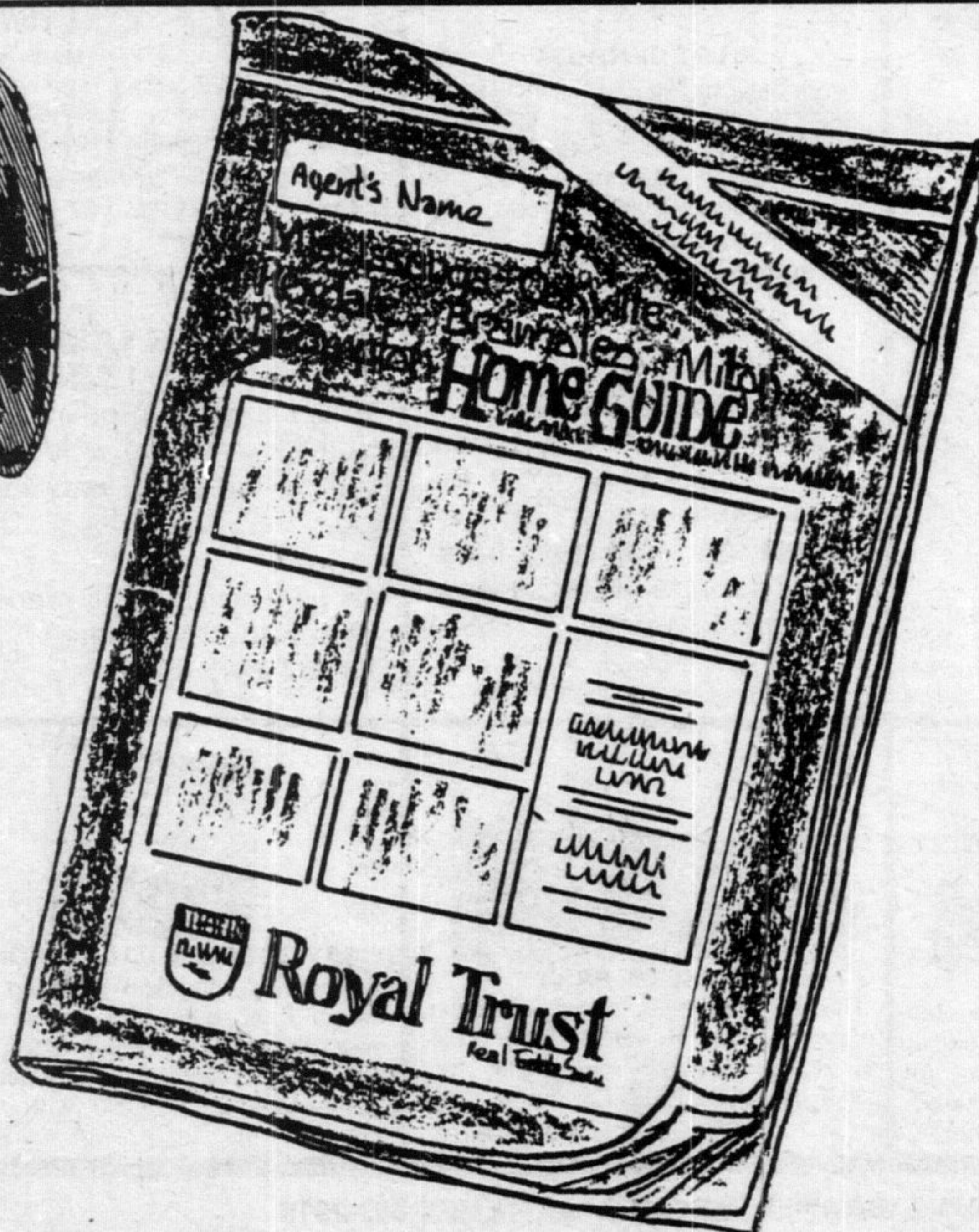
878-8188

REAL ESTATE,  
 FINANCIAL AND  
 TRUST SERVICES

Toronto Line  
 826-9707



COPIES  
 DISTRIBUTED  
 TO ALL OFFICES  
 COAST TO COAST



Canada's  
 Largest Residential  
 Realtor introduces  
 the New Royal Trust  
 Home Catalogue

- Featuring —
- Resale Homes
  - New Homes
  - Country Homes
  - Estates
  - Heritage Homes
  - Royal Manor Homes

INCLUDED IN TODAY'S MILTON CANADIAN CHAMPION, OR CALL TODAY FOR YOUR COMPLIMENTARY COPY 878-8188.

*If your property isn't listed in the New Home Catalogue — you're not quite in the market.*