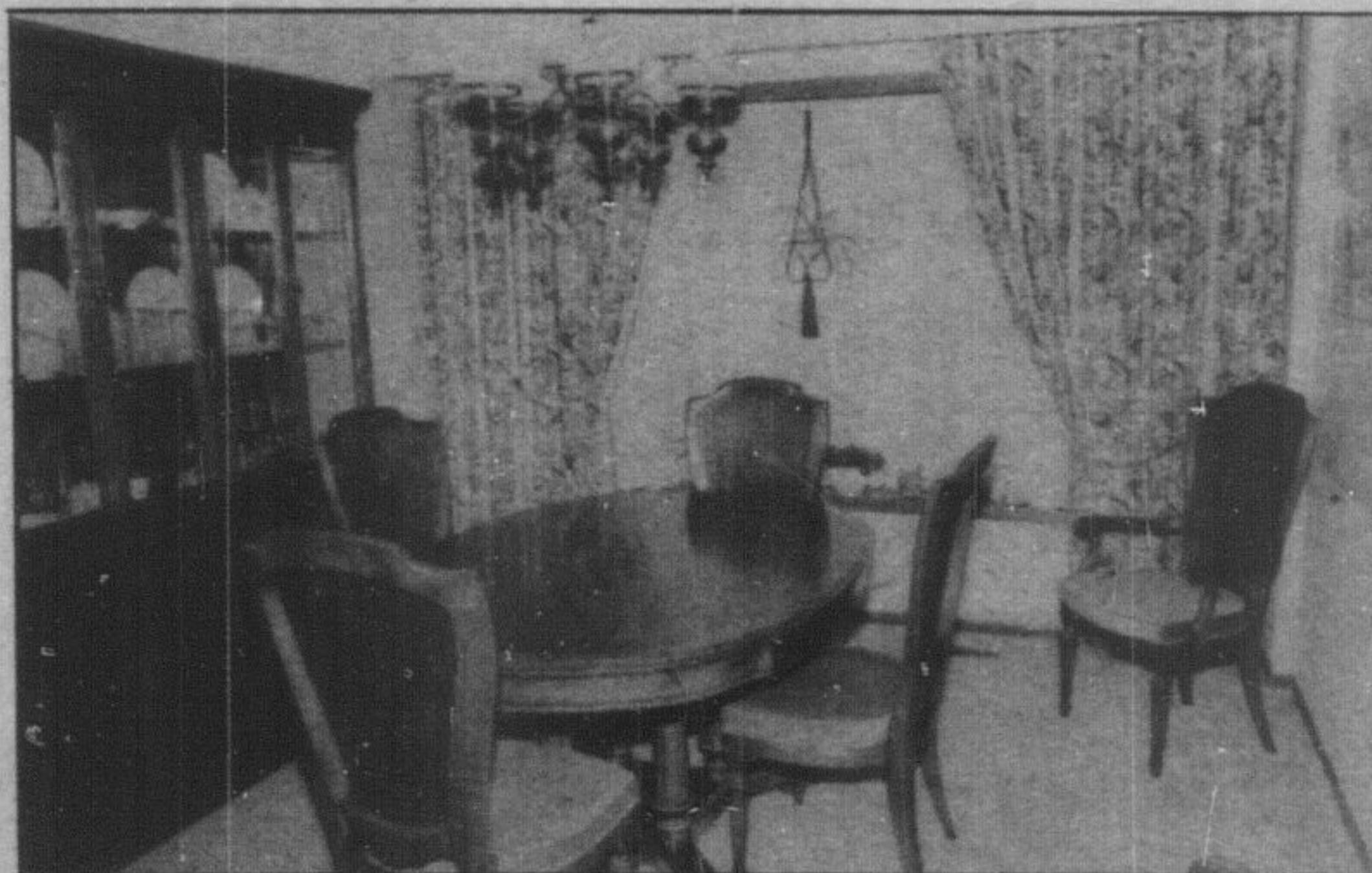




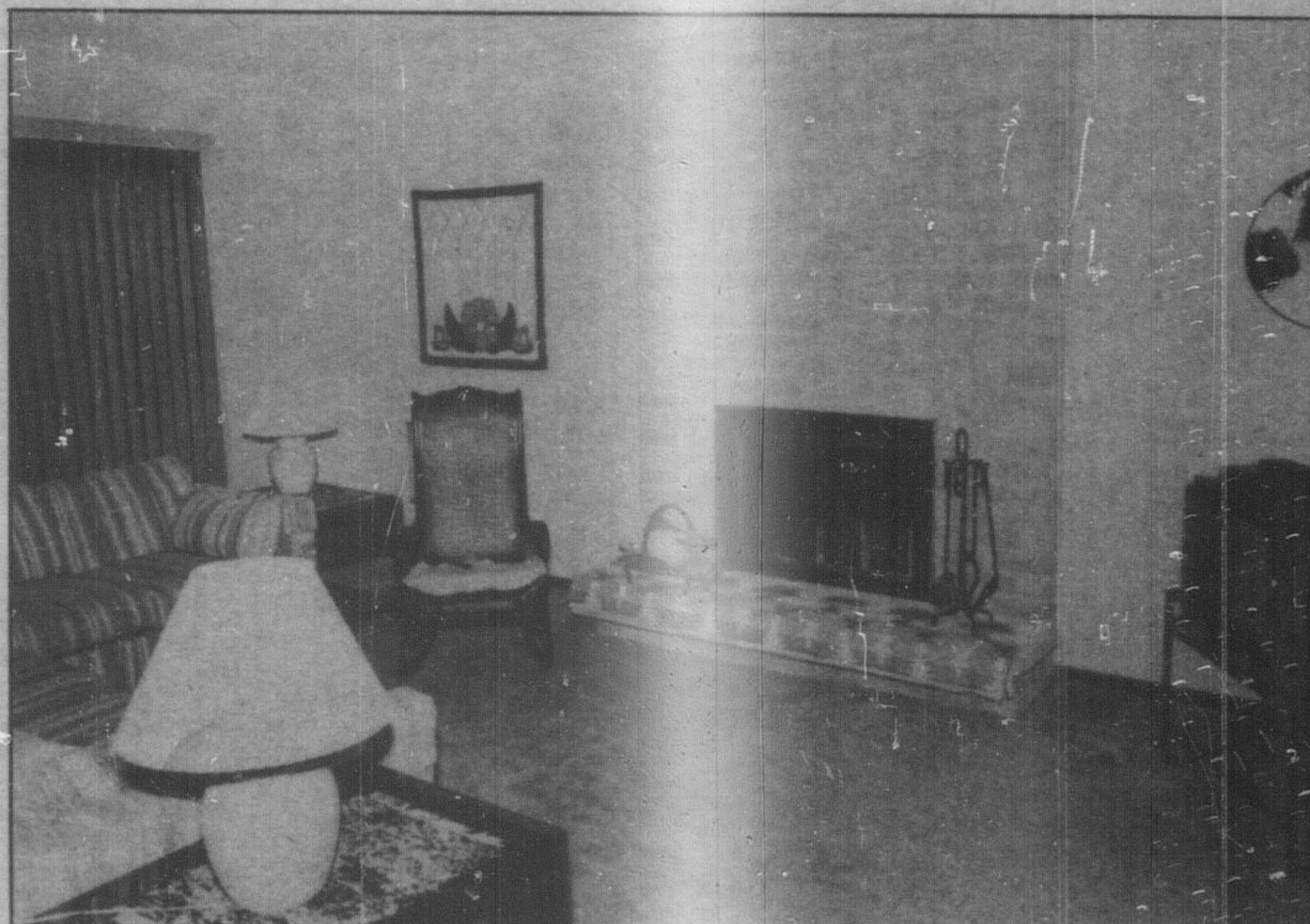
This lovely four-bedroom brick home includes some extras such as a main level family room, air conditioning and a partially completed basement.



The separate dining area adjoins the formal living room and is only steps from the kitchen.



The central foyer affords plenty of room for greeting guests. The solid oak bannister leads to four bedrooms on the upper level.



A lovely brick fireplace enhances this main level family room.

Comfortable living

This lovely four-bedroom brick home features over 2,300 square feet of living area.

Well kept and immaculate throughout, it has much to offer, including close proximity to schools and shopping.

A larger than average foyer affords plenty of room for greeting guests. A solid oak staircase leads to the upper level bedroom area.

The main level family room is large and includes a fireplace. A floor to ceiling picture window provides a lovely view of the rear yard.

A spacious Hollywood style kitchen offers plenty of room for the ambitious homemaker and the convenience of a walkout to the back yard.

Also on the main floor are a two-piece bathroom and laundry room.

The large master includes a walk-in closet dressing area plus a four-piece ensuite.

The basement is partially finished with a two-piece bathroom and fireplace.

Extras include central air conditioning and some drapes and vertical blinds.

For an appointment to view this home, please call Royal Trust Real Estate at 878-8188.

realtor's choice

By LINDA KIRBY