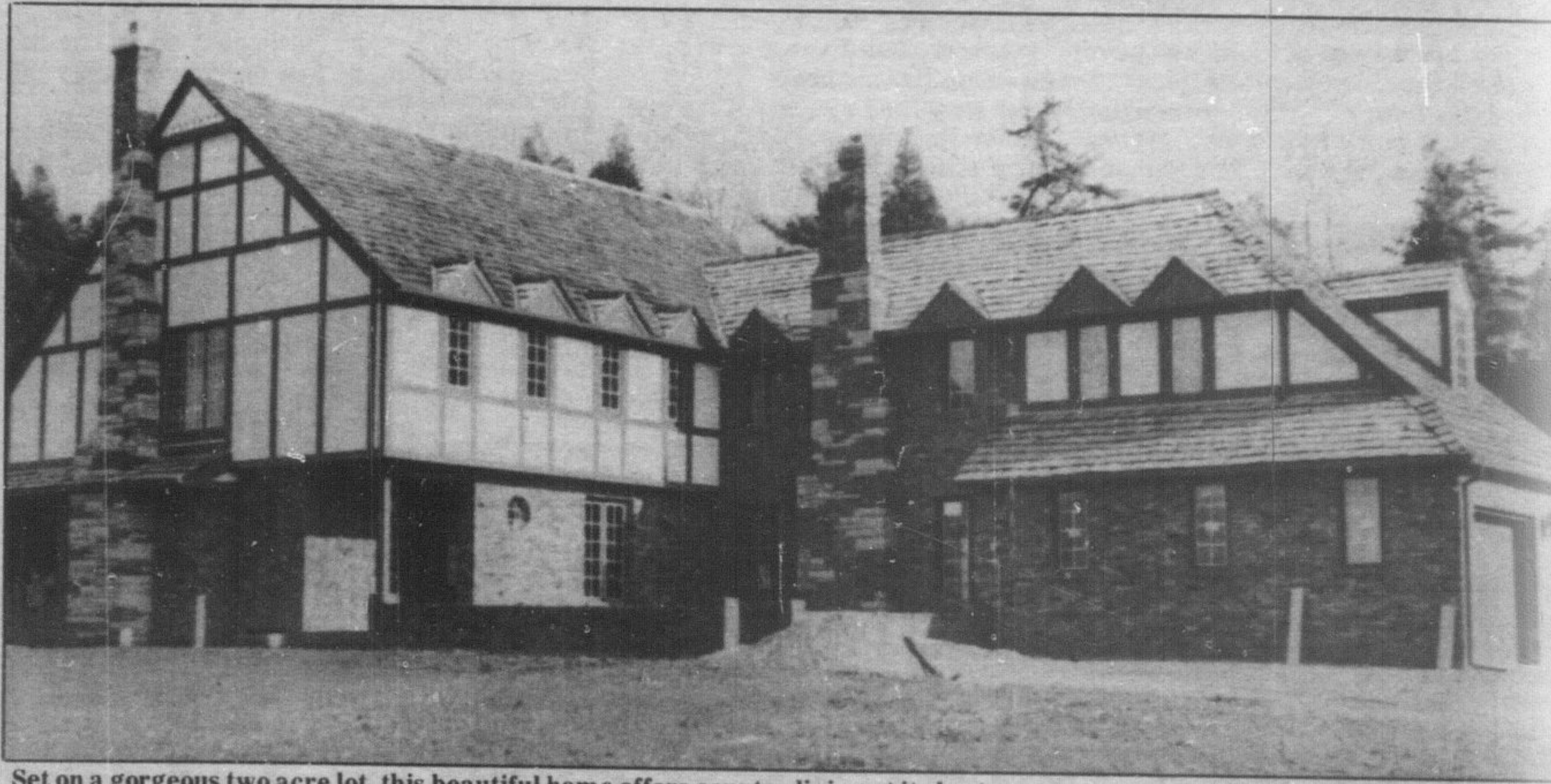


WEDNESDAY, DECEMBER 1, 1982

RE1



Set on a gorgeous two acre lot, this beautiful home offers country living at its best.



A beamed cathedral ceiling, English panelling and open fireplace make this main level family room something very special.



The large country size kitchen is built in solid rock maple and offers every convenience imaginable.

## Atmospheric Old English Tudor

Nestled on a beautiful two acre treed ravine lot in an area of large country estates in this beautiful 4,000 square foot two-story house.

It features a large traditional foyer with a winding oak staircase, spacious landing and powder room, formal living room with open fireplace and French doors to a large, dining room (which features English panelling and vaulted ceilings).

The large family room has the charm and character of the past with beamed cathedral ceilings, English panelling, open fireplace and a studio loft.

A country size kitchen built in solid rock maple combines every modern built-in imaginable with 18th century atmosphere.

The den boasts wainscoting, open fireplace and French doors to a covered patio. There are four large bedrooms including the master with ensuite and dressing room.

In true Tudor tradition, this home has numerous French doors leading to decks and patios. Other features include oak, walnut and pine floors, heat pump, central air, central stereo and built-in vacuum.

Asking \$325,000. To view this traditional home, please call Inge Winther at A.E. LePage Real Estate Services Ltd., at 878-8101.

## realtor's choice

By LINDA KIRBY



A large traditional style foyer is enhanced by a winding oak staircase leading to a spacious landing and powder room.