

## RHLI Affiliate

# Local cadet corps seeks members

Despite what organizers term a good response to registration of cadets last week more teenagers are needed to make this fledgling group complete.

There are presently 25 members of the Affiliation to the Royal Hamilton Light In-

fantry, but at least double that number is the registration goal. The military organization is open to males and females age 13 to 18 years.

The local cadets held their first meeting Monday at the Milton Fair Grounds. Teenagers

interested in adding to the group's numbers are invited to drop into the next meeting to get an idea of what the organization is about.

There is no registration fee as the corps is funded by the Ministry of National Defense. The sponsoring agency

is responsible for two summer camps offered to cadets.

The six week summer course will give cadets practical training as well as a cash bonus of \$240. A two week course is offered with no monetary reward.

The Halton Agricul-

tural Society is the only local sponsor for the newly formed corps and more are being sought to finance various activities.

Army uniforms will be issued to members for parade nights and summer camps.

As cadets, teenagers

learn self discipline, leadership abilities and physical fitness. Cadets also have information regarding military careers with the Canadian Armed Forces available to them.

Sponsors are needed to finance transportation for what are hoped

to be regular excursions to the James St. Armories in Hamilton for rifle shooting practice.

Teenagers interested in becoming cadets can register by contacting Kevin Brackley at 878-5658 or Bill Saddington at 878-0782.



Realtor

# Royal City 876-1156

(416) 800-268-5048

REALTY LIMITED



SANDI KINSALE



BRIAN GREEN

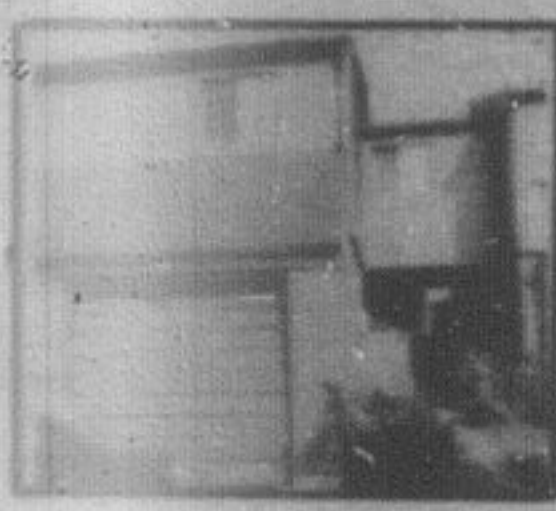


EVA GOODING



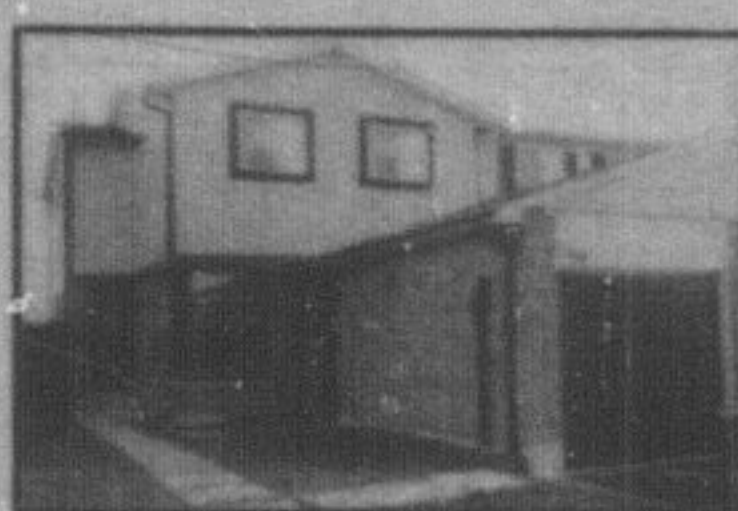
VILLAGE CHARM  
MOFFAT

Brick bungalow located on a mature tree 1/2 acre lot, separate 2 car garage. Call Brian Green. M82-103



END UNIT

2 storey 4 bedroom townhome, large yard beside it, fridge & stove included, eat in kitchen, walkout from living room. Listed at \$49,900. Call Eva Gooding. M82-101



QUIET CRESCENT

Listed at \$76,500 a 3 bedroom semi, garage, fireplace in living room, extra window, large kitchen, fenced lot, 13.37% mortgage until 1986. Call Eva Gooding. M82-92

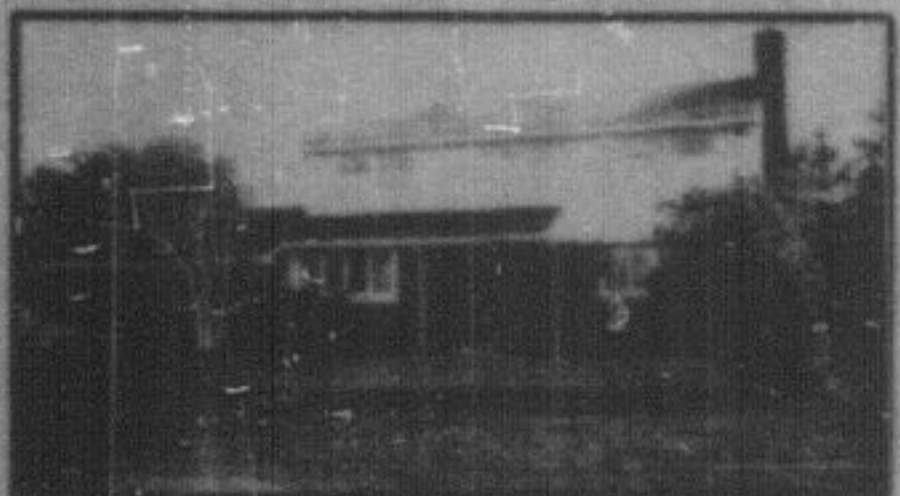


\* Plus much more, a must to see  
\* 11% financing  
\* View today. Call Marg Boyd. M82-72



JUST LISTED AT  
\$85,900

4 bedroom, ground floor family room with walk-out to pool & patio. Dave Addison. M82-104



BRITANNIA & TRAFALGAR

2 1/2 acres with large 4 bedroom home, featuring marble fireplace, large bright kitchen, 3 bathrooms, main floor office. Priced to sell at \$120,000.00. Good financing available. Call Pauline Hobbs for details. M82-87



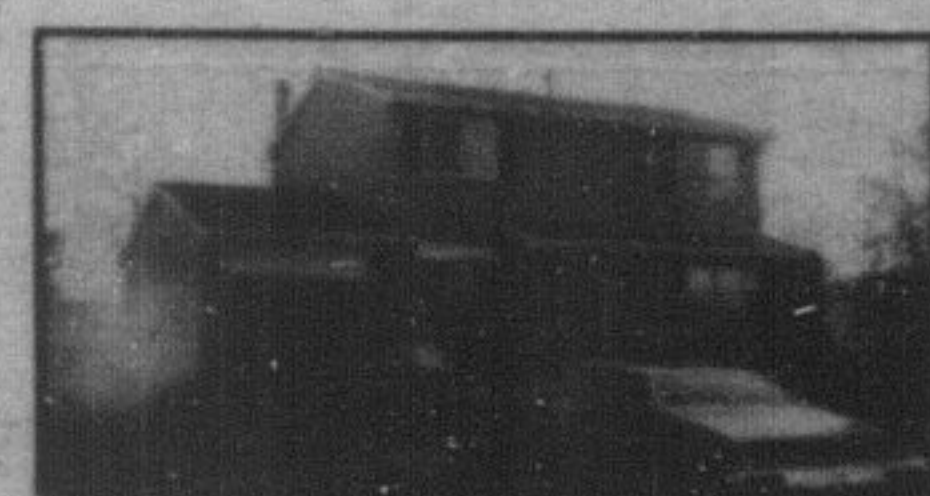
PREFER TO LIVE ON  
A CRESCENT?

You'll just love this three bedroom semi. Other features include brick fireplace, separate dining room, full basement, large lot and an 11% mortgage. Listed at \$76,900. Call Bill Currie. M82-80



JUST WHAT THE  
FAMILY ORDERED-

4 bedrooms, 2 washrooms, large living room and dining room, den with fireplace, spacious eat in kitchen and 133.4% financing. Reduced to \$82,500. Call Bill Currie. M82-90



STOP, LOOK AND  
PURCHASE

4 bedrooms, eat in kitchen, family room, rec. room, fireplace, den, sauna, 2 walkouts, huge deck, fenced yard and backs onto park. Only \$76,900.00. Call Bill Currie. M82-96



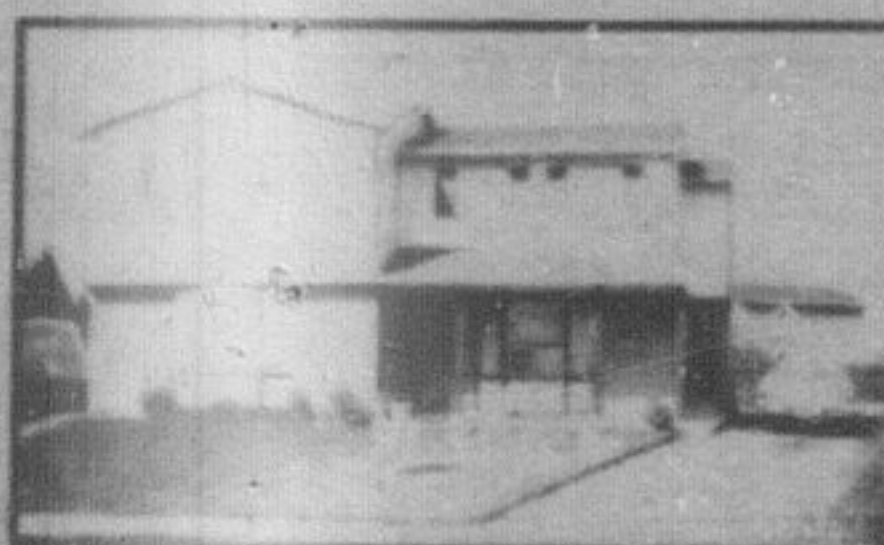
PRIVATE AND SCENIC

Gorgeous country sidesplit features 2 brick fireplaces, patio, landscaped lot, circular drive, 3 bedrooms, 2 washrooms, family room, hobby room, a 11 1/2% mortgage until Nov. 84. Listed at \$109,900. Call Eva Gooding. M82-98



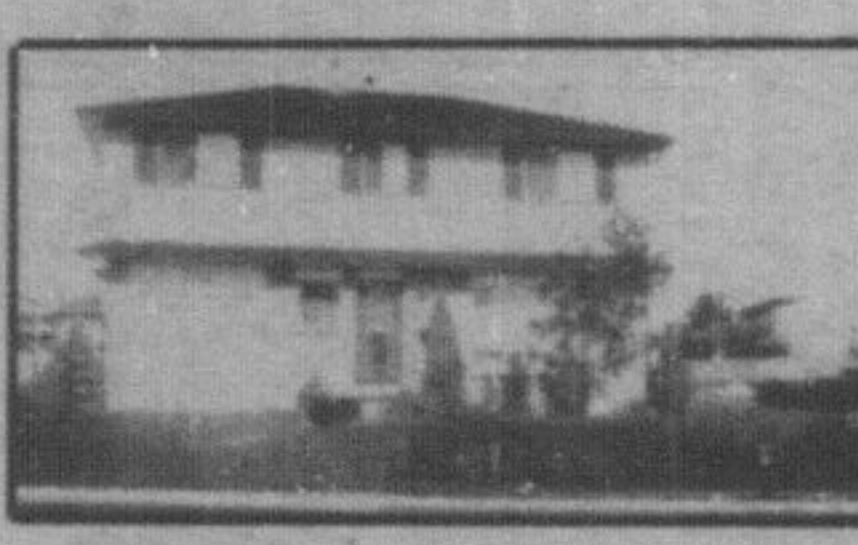
AFFORDABLE DELIGHT  
(OWNER TRANSFERRED)

Large 11% mortgage, shows better than new. Living room with fireplace, main floor laundry, eat in kitchen with lots of storage, fenced yard, ideal for stoves, park, transport etc. Only \$79,900. Call Stewart Haddon. M82-94



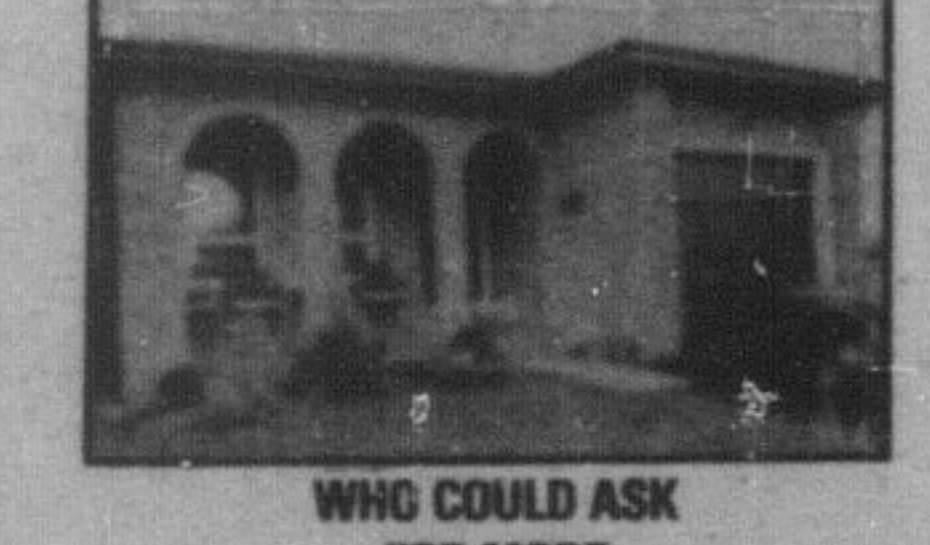
LOCATION IS  
EVERYTHING

Where better than on the finest lot on a quiet court in a newer subdivision? What better financing than \$45,500 at 10 1/2%? Call today for more details. Please contact Helene Page. M82-89



REDUCED TO  
\$81,500.00

See this great buy today. Located in Dorset Park, this home offers 4 bedrooms, separate dining room, finished rec. room, 2 baths, extra large lot and beautifully landscaped. For an appointment to inspect contact Helene Page. M82-74



WHO COULD ASK  
FOR MORE

A 4 level backsplit with 3 bedrooms, 5 piece washroom, hollywood kitchen, family room complemented by a fireplace, neutral tones thru-out, upgraded broadloom, 13 1/2% mortgage for 3 years. Listed at \$87,900. Call Eva Gooding. M82-93



HORSE LOVERS OR INVESTORS  
WANTED - \$169,900

30 acres of true country. A spacious 4 bedroom farmhouse with a 2 bedroom apartment attached. Included in this deal is a 9 box stall bank barn and a half mile all weather training track. For more information call Ilona Nicholson.



EXECUTIVE TOWNHOME

Finished to a "T", 4 bedrooms, eat in kitchen, with pantry, separate dining room, with mahogany trim, new floors, divided rec. room, garage, landscaped lot, 10 1/2% mortgage. Listed at \$55,900. Please call Eva Gooding. M82-59



RODENT RANCH

On 1/2 acre central to Milton, Georgetown and 401. 4 bedroom bungalow with \$58,000 1st mortgage at 10 1/2% till Sept. 84. Big rabbit barn, Asking \$99,500. Make any offer with Barbara Jennings 877-5296. M82-227



GUELPH LINE

Custom brick bungalow on 2 1/2 acres, formal living room, main floor family room with fireplace, eat in kitchen, three walkouts to this beautiful landscaped lot, 5 minutes to 401. Ilona Nicholson. M82-44



VENDOR ANXIOUS  
\$45,000

Bungalow on 57' x 157' lot, 4 appliances, double garage, spotless - move right in, no handy man needed. 5 minutes to 401. Ilona Nicholson. M82-40



DOCTORS, LAWYERS,  
BUSINESSMEN

Located between Oakville and Milton. This home of distinction nestled in 10 acres of towering forest will offer your family and guests many hours of pleasure. Design and decor has been executed to reflect a class of distinction. Price \$239,000.00. Begin a personal tour today by contacting Helene Page. M82-64

INVEST IN 2.04  
ACRES

Landscaped by mother nature ready for your DREAM HOME, terrific location for solar home. 3 miles from 401. Call Marg Boyd. M82-67

\$39,900  
1/2 OF AN ACRE

Build your dream home, in a well established area close to 401, view of escarpment. Please call Eva Gooding. M82-52

INDUSTRIAL SPACE FOR  
LEASE

2-1500 square foot units, Main street. Call Bill Currie. M82-66

ATTRACTIVE TOWNHOUSE

Three bedrooms, 2 washrooms, separate dining room, family room, private yard, close to mall. Listed at \$47,900. Call Bill Currie. M82-79

EXTRAS, EXTRAS, READ  
ALL ABOUT THEM

four levels, three bedrooms, three washrooms, family room, fireplace, upgraded flooring, covered patio, professional landscaping and lovely area. Listed at \$114,900. Call Bill Currie. M82-14

COUNTRY LIVING WITH  
INCOME

Self contained apartment plus 4 bedrooms, 3 washrooms, family room, fireplace, half acre lot and 14% mortgage. Listed at \$109,900. Call Bill Currie. M82-07

DREAMS CAN COME TRUE

Beautiful 5 1/2 acres near Campbellville, 1/2 hard bush, rest clear on a hill overlooking conservation and horse farm. 480' frontage, drilled well, all leaves paid, priced right at \$61,900. Ilona Nicholson. M82-42

COUNTRY, 1/2 PLUS ACRE,  
MINS. NORTH MILTON

On a school bus route, plenty of fresh air. This delightful sidesplit has 3 good size bedrooms, 1 1/2 bathrooms, and for those Christmas parties large rec. room with a fireplace for burning the yuletide log. Large kitchen eat in and lots more. Call Stewart Haddon. M82-95

CALEDON MOUNTAIN  
ESTATES

3 1/2 acres of golden maples in village of Bel fountain - 3200 square foot home is 50% finished - prestige area - \$124,900. Call Sandi Kinsale. M82-65

IDEAL FOR CAMPERS

5.8 acres, located near Grand Valley within conservation area, listed at \$18,500.00 Call Eva Gooding. M82-51

ROLLING ACRES

50 acres of arable land - ideal for horses or cattle - good bank barn - home has been all updated - \$169,900. Call Sandi Kinsale. M82-63

LOT

On Kingsway Place, 55 x 178 irregular. Close to Parks and schools. Call Pauline Hobbs for details. M82-77

50 ACRES

With 1000 ft. frontage on Highway 25 ideal future potential. Excellent financing available. Call Pauline Hobbs. M82-38

SUPER VALUE  
\$103,900.00

Do not miss this great value, plus terrific home, excellent financing. Call Marg Boyd today. M82-73

17 ACRES

Vacant land south of Milton, asking \$29,900.00 Call Brian Green. M82-91



\$42,500  
4 APPLIANCES

3 bedroom townhome, close to all amenities, eat in kitchen, walkout, paneled rec. room, combined living & dining room. Call Eva Gooding. M82-43

11% MORTGAGE UNTIL  
DEC. 85

3 bedrooms, 3 washrooms, separate dining room, family room, 2 fireplaces, central air, fenced yard. Listed at \$84,500. Call Bill Currie. M82-84

"Our Strength is our People"

Dave Addison  
878-7079

Sandi Kinsale  
876-2567

Pauline Hobbs  
878-7747

Bill Currie  
878-4944

Ilona Nicholson  
854-9883

Helene Page  
878-2995

Eva Gooding  
876-1641

Marg Boyd  
854-2106

Brian Green  
878-0322

Stewart Haddon  
878-3574

Bonnie Watson  
878-2274

Wayne Casson  
878-0466