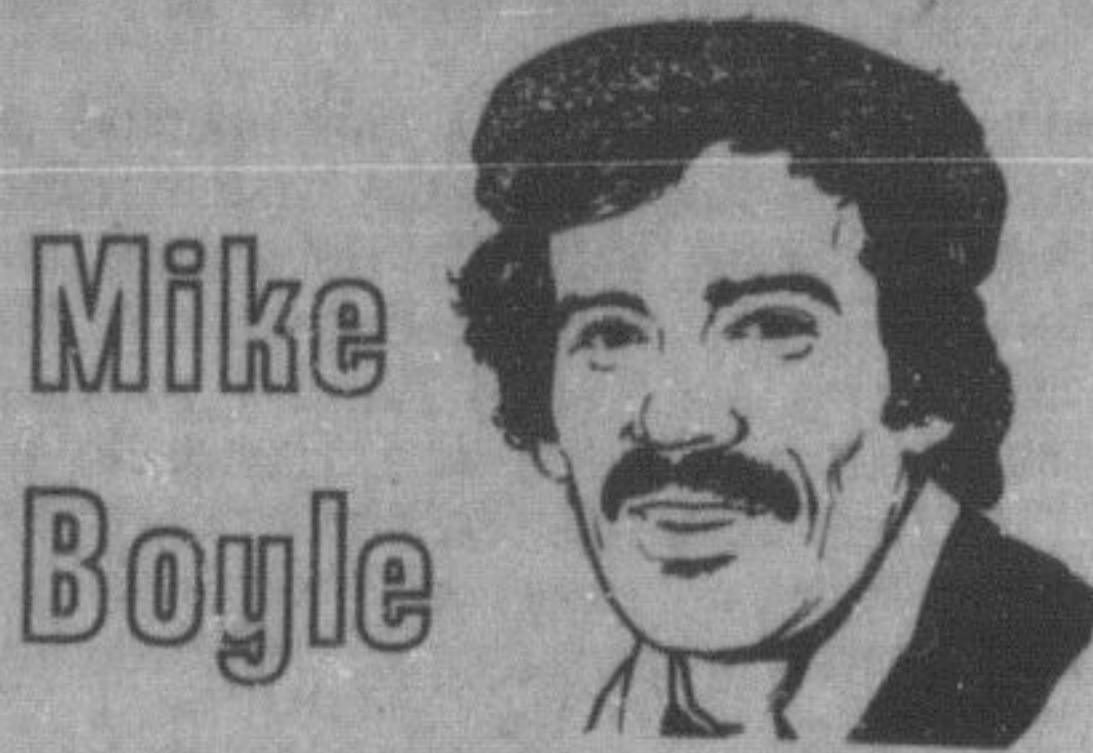


# Champion Sports

**T**HE CHAMPION'S Salute to Summer Sports, which was slated to be published with today's edition of the paper, is being postponed until next week.

Sorry for the inconvenience. We'll be including all the winning and runner-up teams from soccer, minor baseball and girls softball in this special souvenir tabloid section.



Last week, I wrote a column concerning the moving of some minor hockey players from Milton to the Metropolitan Toronto Hockey League.

Unfortunately, I don't think I clarified the difference between a legal adoption and legal guardianship which, rightfully, upset some parents and people involved.

Legal guardianship is different from adoption in that the parents haven't given up their rights to the child. Originally, legal guardianship came about to deal with orphans.

Legal guardianship is the technique used which permits players to move from one hockey area to another. It entitles the player to attend school, among other things. While this system has been abused by many young hockey players, not just from Milton, it is perfectly legal and binding.

I spoke with Vern McCallum, president of the Ontario Minor Hockey Association, concerning the moving of players from OMHA territory to the MTHL.

His sentiments were that the numbers were in fact declining. Although a team could lose all its points if it was proven that a player moved from one area to another totally for the purpose of playing hockey, he said the OMHA doesn't have the time to investigate and the onus would be on the protesting team to prove it.

In the past five years, McCallum said he couldn't remember an incident of a successful protest. It seems the only player it really affected was Wayne Gretzky. The Gretz was forbidden from playing minor hockey in Toronto but signed a junior card instead.

McCallum said the rule protects the small towns and added that the

rule is effective in this regard. Players from Kitchener, for example, who were cut from the top rep team, can't play for Elmira thereby ensuring that small town of its local calibre.

Once again, sorry for the confusion.

As of Tuesday, Milton Minor Hockey Association president Bob Davidson has not resigned his post. He was expected to send a written resignation to the MMHA's directors meeting last Tuesday but no letter nor word was received.

As a result, the board of directors has decided to carry on with its duties as normal. No difficulties are expected. First vice-president Mike Atkinson, will be the co-signer on association cheques along with the treasurer, Bill Harrison.

Since the board was elected in May, five members have left. Along with Davidson have been Howie Scannell, Dunc Currie, Larry Scott and Judy Dillon.

A survey concerning Milton's cultural and recreational future has been travelling around the Town of Milton.

Monday, the meeting was held at the Boyne Community Centre and last night (Tuesday), a public forum was held at E.C. Drury School.

Tonight (Wednesday), the third and final meeting will be held at Brookville Hall at 7.30 p.m.

Eight people are on the panel which will discuss Milton's long-range needs in both culture and recreation. It's a good idea to attend should you feel strongly about a need which isn't yet fulfilled.



Chasing after a loose puck is Racer's Edge Buddy Thomas while Miltowne goalie Glen Horney sprawls to cover up a loose puck. Miltowne's Paul McCann guards the net while Mike Murray prepares in front of the goal. The Edge

battled back from two one-goal disadvantages late in the contest to secure the draw with Miltowne.

## The Edge, Miltowne tie in playoff-style opener

There remains little doubt now that another pretender to the throne in the Milton Hockey League exists.

On paper, Miltowne Realty was determined to be, at the very least, the most improved club in the league. On Sunday, the club proved exactly how much it was improved.

Miltowne played to a hard-fought 3-3 tie with defending champion The Racer's Edge. Fast-paced action characterized the play which could also be described as intensely physical.

Although referee Wayne Timbers called 21 minor penalties in the contest, it wasn't as much dirty as it was physical. Crunching bodychecks were about equally delivered by members of both teams in a contest which more resembled a championship playoff game than the opener of the MHL season.

"I think each team was out there trying to prove a point," explained The Edge's back-up netminder Dave Ballard.

Though he didn't play, Ballard was among the busiest players. On about half a dozen occasions, Ballard was summoned to attend to players who were slightly injured. While several players appeared seriously hurt, all returned to action later in the game.

The game featured brother against brother. Al Horney guarded the nets for The Edge while brother Glen was between the pipes for Miltowne.

Miltowne jumped ahead quickly 1-0 when defenceman Keith Michie scored from Bob Baker and Ernie McConnell just 29 seconds into the first period.

The goal was scored with each club playing five players aside. Just six seconds into the contest, Miltowne's Earl Shepherd and The Edge's Peter McCuaig set the tone for the contest when they were assessed minors for high-sticking.

The goal held up for all of the first period. The Edge tied the score less than two minutes into the middle frame when two newcomers to The Edge, Dean Villa and Buddy Thomas, combined for a goal with Villa poking home the shot.

The teams played the rest of the second period and almost 11 minutes of the third without a goal before sniper Paul McCann finished off a play with a good second effort to put Miltowne ahead 2-1 with 4:09 to play. Michie assisted on the play.

Eighteen seconds later, Thomas came speeding over the Miltowne blue line and was high-sticked by John Dent. The defenceman was assessed a major penalty.

With The Edge on the power play, Mike Murray evened the score with his first MHL goal. Brent Murray and Tom Chuchmach drew assists.

The Edge was still on the power play when Miltowne's Duane Stark corralled a loose puck at centre ice and while being checked, skated down the ice on a partial breakaway. Stark's shot was stopped by Al Horney but "Sparky" didn't give up the battle and successfully poked the puck and Horney into the goal for what appeared to be the winning goal with just 1:05 left.

Racer's Edge coach Steve Gervais

appeared to give Miltowne some added security when he protested the goal vigorously for which Timbers assessed the bench a minor penalty.

The minor evened the numbers on the ice at four each (each team was also assessed a minor with 1:30 left). However, The Edge stormed back and took control of the play quickly in the Miltowne zone. Just 14 seconds after Stark's goal, Brent Murray blasted home a shot to the top corner after taking a nice pass from Brett Patterson to knot the score.

Neither club mounted an offensive in the last minute as each team was content to play for the tie.

In other games, Lou's Place Hawks fired three third-period goals to edge Straight Line Fence 4-3 while John Burns Stable rolled to a comfortable 7-2 win over Milton Chrysler-Dodge.

Penalties hurt Straight Line as the club picked up two minors late in the game. Lou's Place capitalized for two

goals which overturned a 3-2 disadvantage and turned it into a 4-3 Lou's win.

Rookie Jim Newman opened the scoring two minutes into the first period for Lou's Place with a goal from John Volpe and Kim Mountain.

Hawks carried the single-goal lead until midway through the second period when Fencers scored twice in a 33-second span to take the lead.

Rob Champoux tallied the first goal from Bill Lyons and Steve Hannon before Ian Wanless scored a power-play goal from Don Habkirk.

Four minutes into the third period, Hawks tied the score. Richard Shannon fired the goal with Jim Cartwright and Newman picking up assists.

Just 37 seconds later, Straight Line bounced back to regain its one-goal lead with Champoux firing his second of the night with Randy McDonald and Randy Murray earning assists.

However, Straight Line's Moe

Miljour and Wanless were saddled with minor penalties a minute apart later in the game and Lou's Place capitalized on the manpower advantage to sock away the tying and winning goals.

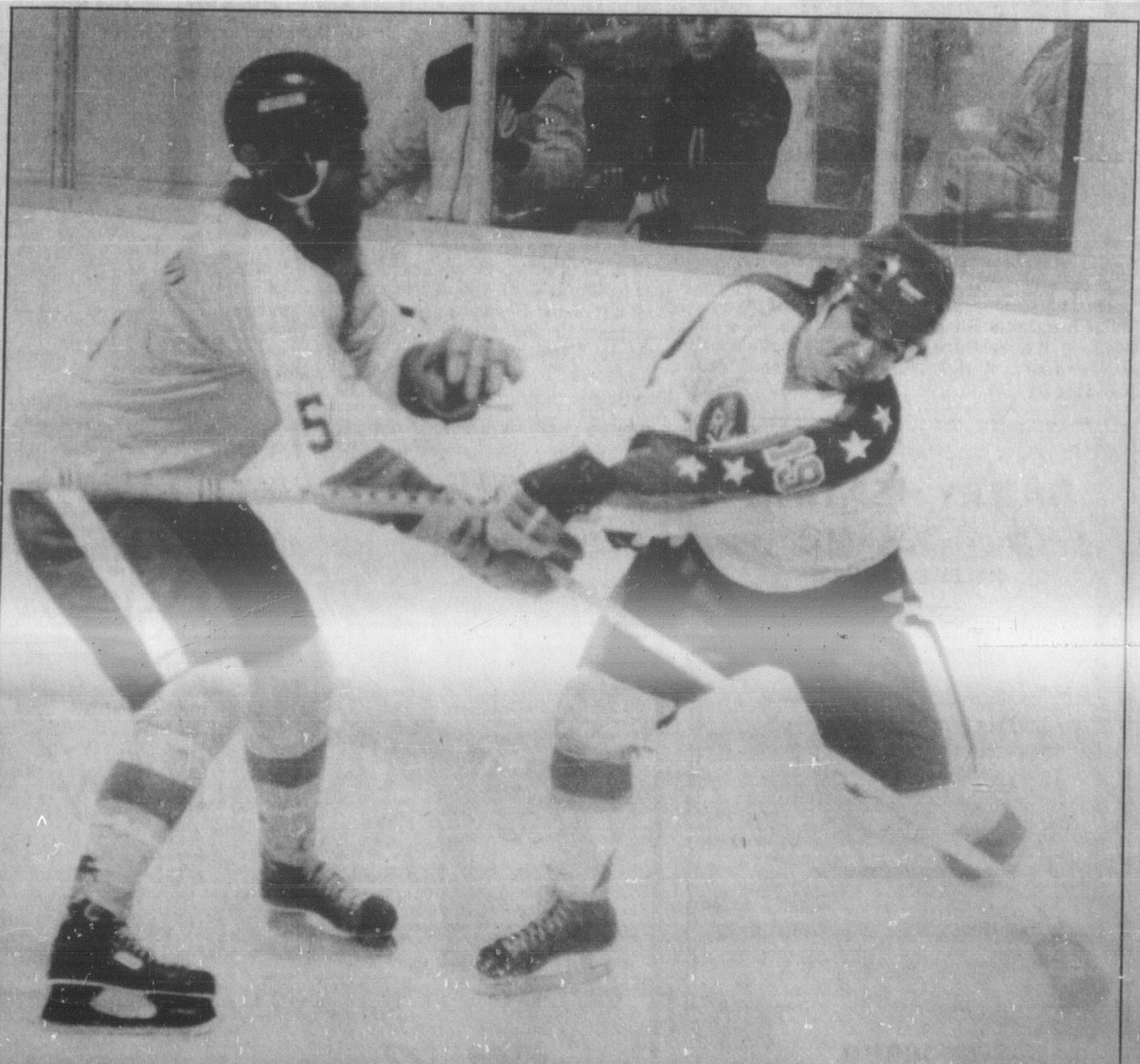
Gord Adams tied the score at 4:52 with Lou D'Arzio and Cartwright assisting before Guy McGinnis salted away the winner at the 3:55 mark. Adams and D'Arzio drew assists.

Newcomer Todd Corradetti sparked John Burns Stable with three goals and an assist over Milton Chrysler-Dodge.

JB Stable built a 5-0 lead five minutes into the third period before Chrysler rallied to close the gap with a pair of goals. JB Stable closed out the scoring with two markers in the final 25 seconds.

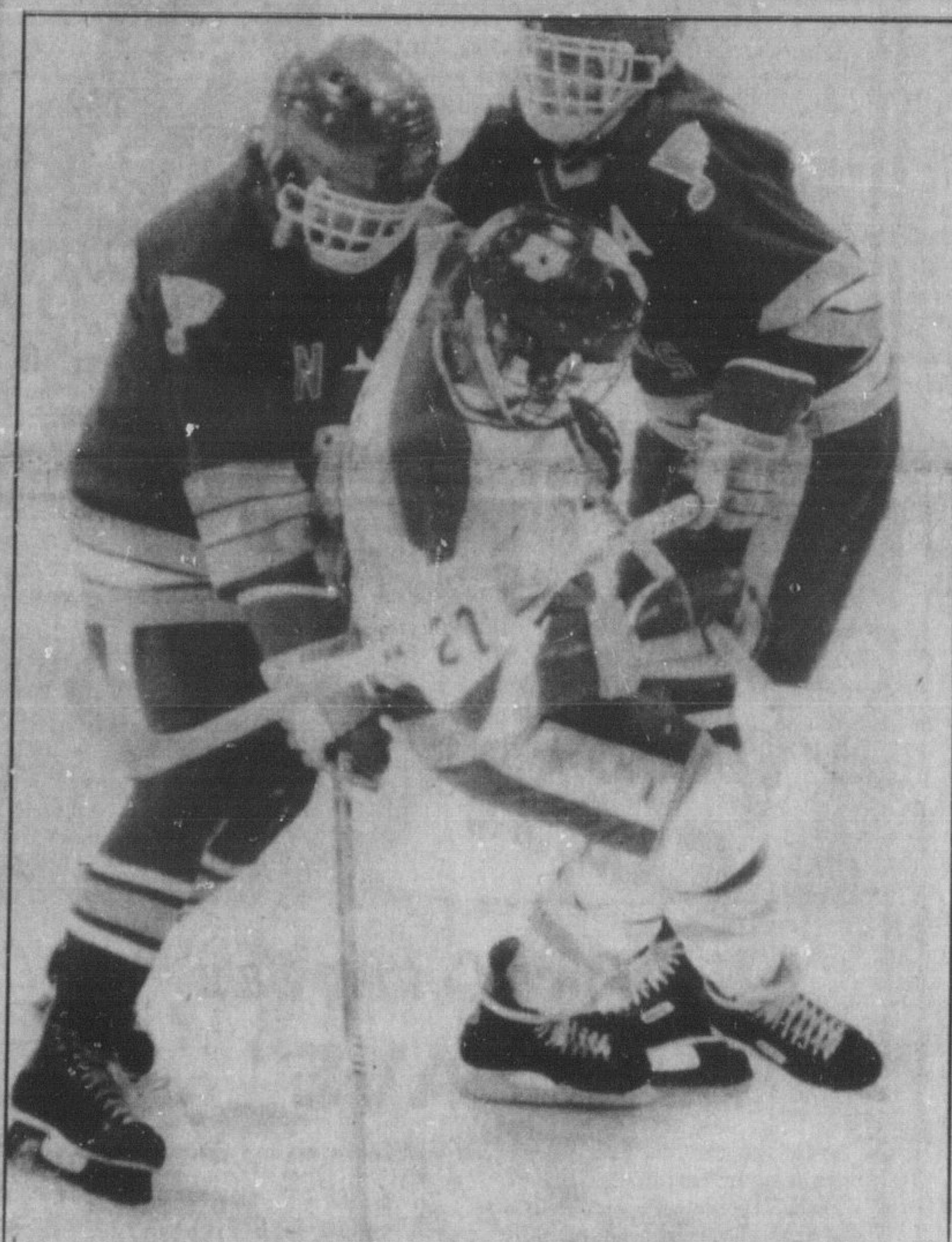
Ron Armstrong added two goals with Les Wilson and Dave Heipel adding singles.

Mitch Lajeunesse and Gary Dance scored for MCD with Bill Goencz assisting on each goal.



Battling for the puck in the corner are Clarence Haringa, of Miltowne, (left), and John Crawford of The Edge. The two teams played a hard-fought physical contest and with the good effort Miltowne has already staked its claim on the champion-

ship of the league. In other games, Lou's Place edged Straight Line Fence while John Burns Stable cruised past Chrysler-Dodge 7-2.



### Squeeze play

Milton's Perri Hood (middle) gets involved in a squeeze play with Dundas Sunday. Milton and Dundas played to a 1-1 tie in the minor midget contest at Memorial Arena.

## Good things come in threes for Optis

They say everything comes in threes. For the Optimist minor peewee team, they had a weekend of threes. Three games in three nights and three wins.

The first game Saturday against Streetsville was more like a three-ring circus with Milton scoring three goals in the first period, six in the second and 10 in the third to give them an easy 19-0 victory.

Goal scorers for Milton in the game resulted in a list of the team's roster. Shawn Healey with three goals and four assists, Jason Blanchard 3-3, Robby Mifsud 2-3, Richard Bray 2-3, Lee Finch 2-2, Chris Fabro 2-1, Todd McLeod 2-1, Robby Turner 1-3, Kyle Hasselheldt 1-2, Greg Harris 1-1, Scott McLeod two assists, and Kevin Moffatt and Mark French each with an assist. Goalie Mark Harrison fended off 17 shots to score his own shutout.

On Sunday Milton came face to face with Georgetown in the teams first meeting since Milton elimination of Georgetown in OMHA playoffs.

The first period was deadlocked until the three-minute mark. Healey picked up the puck in his end and skated in on Georgetown's goalie to break the deadlock unassisted. With just 10 seconds left in the period, Robby Mifsud scored the go-ahead goal assisted by Chris Fabro and Mark French.

Milton's three penalties to Georgetown's one in the second period gave Georgetown some good opportunities to score but, they came away from period unsuccessful.

In the third period, winger Lee Finch came up with a diving save across Milton's empty net to divert a sure goal. Both sides fought it out right up to the end.

With 55 seconds left Milton had two men in the box and Georgetown one. Georgetown pulled its goalie in favor of an extra attacker and were ready for the face-off in Milton's end. Milton goalie Harrison through some superb goaltending had stopped 26 shots and was trying for his second shutout. With 37 seconds left, Georgetown scored but it still wasn't enough and Milton took the 2-1 win.

On Monday, the Optimists faced Flamboro. Mifsud opened the scoring just after three minutes of action with assists to Fabro and French.

Flamboro notched three unanswered goals to give them 3-1 lead at the end of the second period.

In the third period, Milton replied with three goals of their own to give them the 4-3 win.

The unanswered goals came from Blanchard with Bray assisting. French tied the game up with Fabro on the assist, and the final winning goal came from Healey on a pass by Mifsud.