

By ALEX MATHESON
Special to The Champion

Limit class sizes

The Halton board of education doesn't intend to set a policy limiting maximum class size, but does have a commitment to meet its own standards of average class size, says the superintendent of instruction.

Although there are a number of classes with more than 30 students (the figure the teachers want as the maximum is 30), there are 57 classes with 15 students or less in the academic area, said Ray Stoness.

These would include senior Latin and music, as well as upper level technical. There are 67 classes in the four-year program with less than 15 students.

The board will not commit itself to an allocation formula, but it did add eight teachers into the

regular secondary school program, despite declining enrolment. Twelve additional teachers were added into the special education area, but these were mandated by the Province, said Mr. Stoness.

He said that no teachers would be taken from the regular program to staff special education.

It is in grades 9, 10 and 11 academic that the largest number of big classes occur, he said.

To add the approximately 30 teachers required to eliminate classes of more than 30 students in the secondary schools would cost \$1.5 million on a budget in the \$130 million range, he said.

The argument that smaller classes would make for better education doesn't exist, he said, adding that achievements of students from this board are as good or better than most other boards.

Mr. Stoness said no teachers would have all their classes in excess of 30 students. As it is,

teachers take three classes of 75 minutes a day.

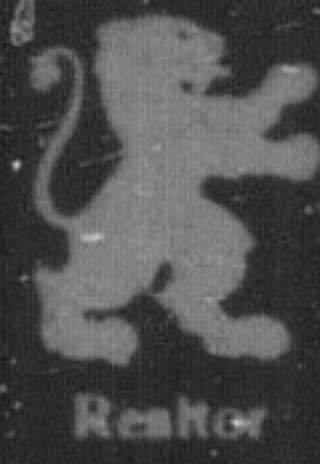
Within each school, the principal and heads of department analyse the effect on all programs of the class size of each subject, he said. They would be aware of a larger English class being created to accommodate a small Latin or music.

Some small classes, such as German at Lord Elgin High School, are being eliminated as too costly, he added.

Halton's average strived-for class sizes are 28 for five-year academic and 18.5 for technical in the high schools.

In elementary schools, kindergarten is aimed at 25, while grades 7 and 8 are to average 32, with 27 as the overall figure, said Mr. Stoness.

He said that Toronto may be lower by one student on its averages and Peel would have about the same number as Halton.



Royal City 876-1156

REALTY LIMITED

(416) 800-268-5048



Dave Addison



Marg Boyd

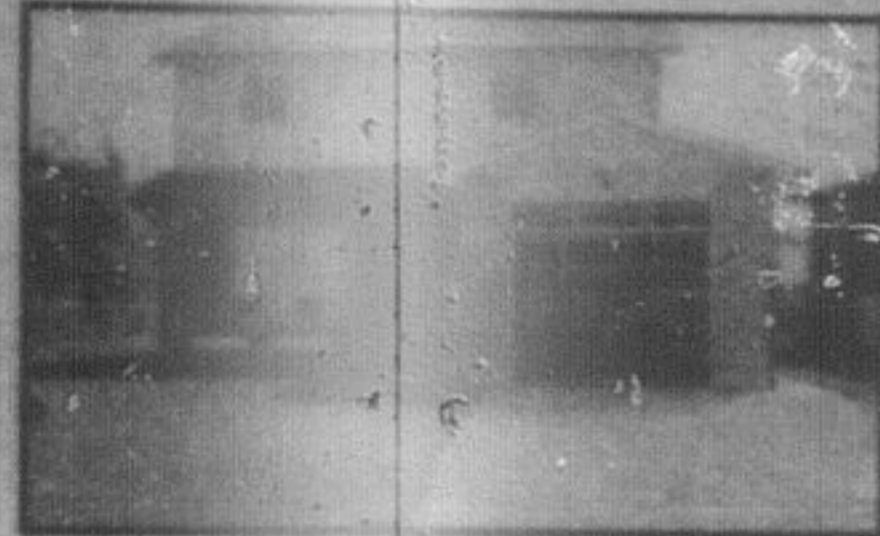


Helene Page



EXECUTIVE HOME - ENTERTAINERS DELIGHT

Magnificent family home in superb condition. Luxuriously appointed. Every feature you could possibly dream of including a gracious foyer with skylight, elegant living and dining room, 2 fireplaces, library and den, recreation and games room in walkout lower level and all set on a ravined 10 acre wooded lot. To see the many extra features too numerous to list, please contact Helene Page. M82-64



"DRASTICALLY REDUCED"

By \$10,000.00 and the vendor will assist in any way possible with financing. One year old, 2 storey 4 bedroom with natural wood trim throughout, oak kitchen cabinets, side and rear double patio doors, upgraded throughout, custom built home on extra large lot. Now listed at \$84,900.00. Please contact Helene Page. M82-85



VALUE SEEKERS

4 levels, 3 bedrooms, 2 washrooms, family room, fireplace, large lot on Crescent listed at \$74,900. Call Bill Currie. M82-49



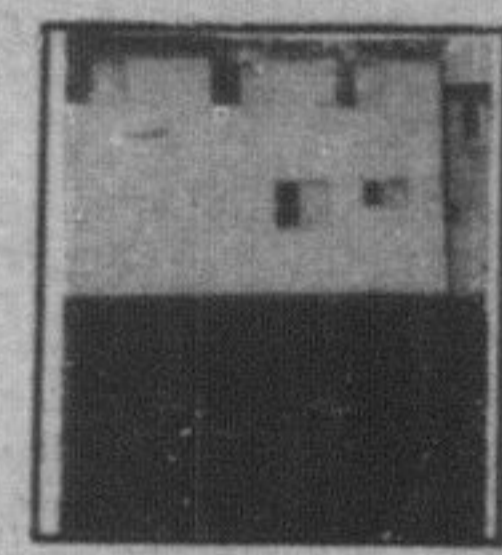
MORE THAN YOU EXPECT

Come view this 3 bedroom family home, it's bigger than it looks, offers excellent financing \$54,338. at 11% till July '84. Call Marg Boyd. M82-75



"ATTENTION-ATTENTION"

This home must sell!!! Immediate possession, listed below market value, assume this fantastic mortgage of \$50,500 at 10% till '85. Call today for more details - please contact Helene Page. M82-72



ATTRACTIVE TOWNHOUSE

Three bedrooms, 2 washrooms, separate dining room, family room, private yard, close to mall. Listed at \$47,900. Call Bill Currie. M82-79



EXTRAS, EXTRAS - READ ALL ABOUT THEM

Four levels, three bedrooms, three washrooms, family room, fireplace, upgraded flooring, covered patio, professional landscaping and lovely area. Listed at \$119,900. Call Bill Currie. M82-14



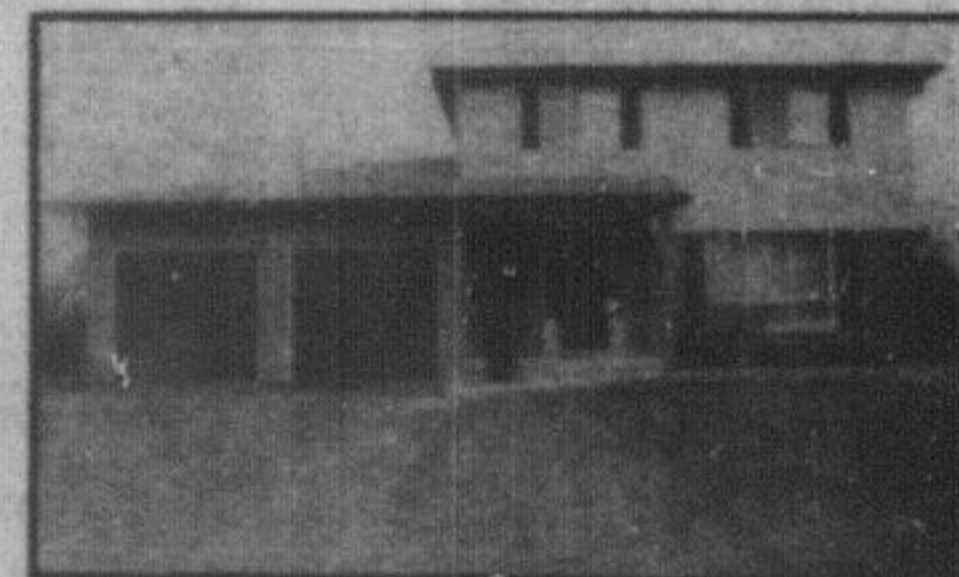
PREFER TO LIVE ON A CRESCENT?

You'll just love this three bedroom semi. Other features include brick fireplace, separate dining room, full basement, large lot and an 11% mortgage. Listed at \$78,900. Call Bill Currie. M82-80



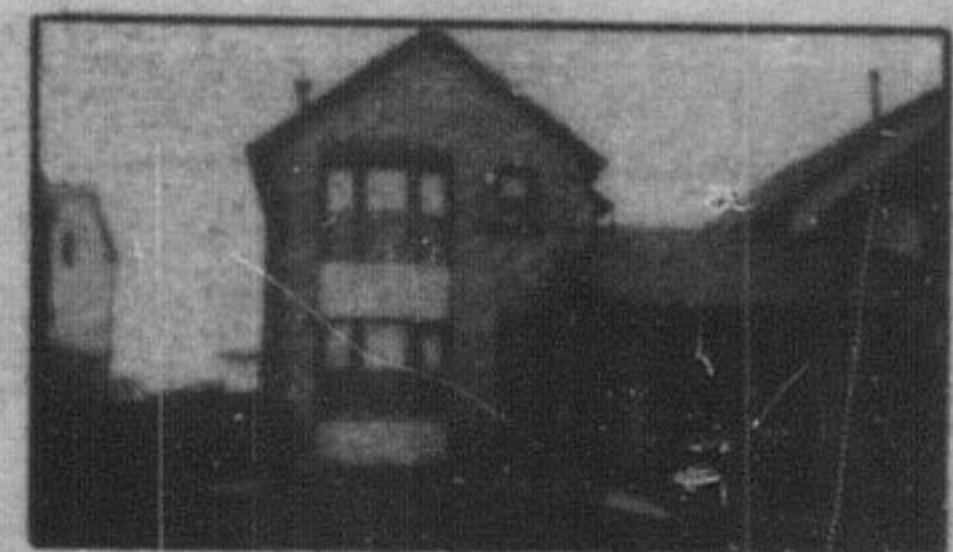
VENDOR WILL HOLD MORTGAGE

Four bedroom home, overlooking private pond, family room, fireplace, self-contained apartment, half acre of land, listed at \$109,900. Call Bill Currie. M82-07



EXECUTIVE AREA

2 storey brick and aluminum, main floor family room, \$70,000 at 11% until '84. Call Brian Green. M82-86



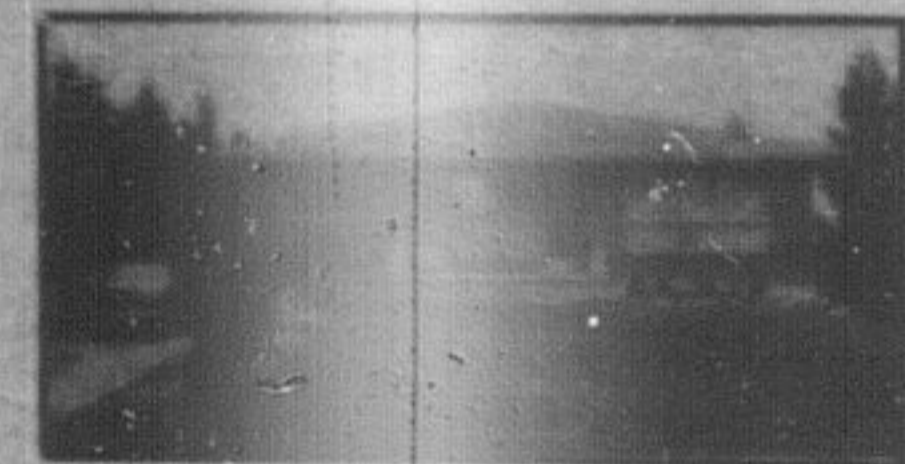
11% MORTGAGE UNTIL DEC. '85

3 bedrooms, 3 washrooms, separate dining room, family room, 2 fireplaces, central air, fenced yard. Listed at \$84,500. Call Bill Currie. M82-84



TAKE A LOOK

at this well maintained 3 bedroom home featuring an eat-in kitchen, separate dining room, 11% mortgage until 1985, wood stove, lot is 50x150 with mature trees and greenhouse, listed at \$74,900. Please call Eva Gooding. M82-83



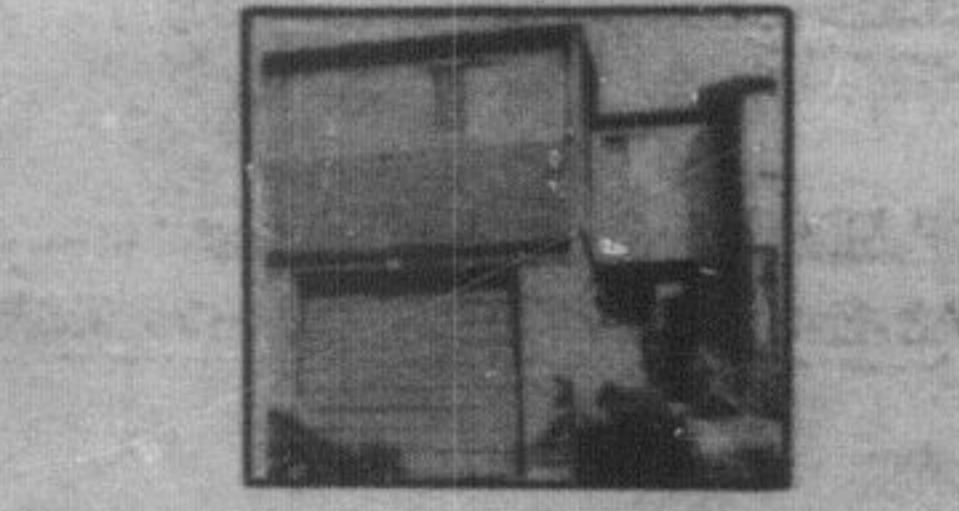
PERFECT FOR THE FAMILY

4 bedroom home fully equipped with large kitchen, separate dining room, with wet bar and airtight stove, games room, mature lot, 10% mortgage, listed at \$81,000. Please call Eva Gooding. M82-45



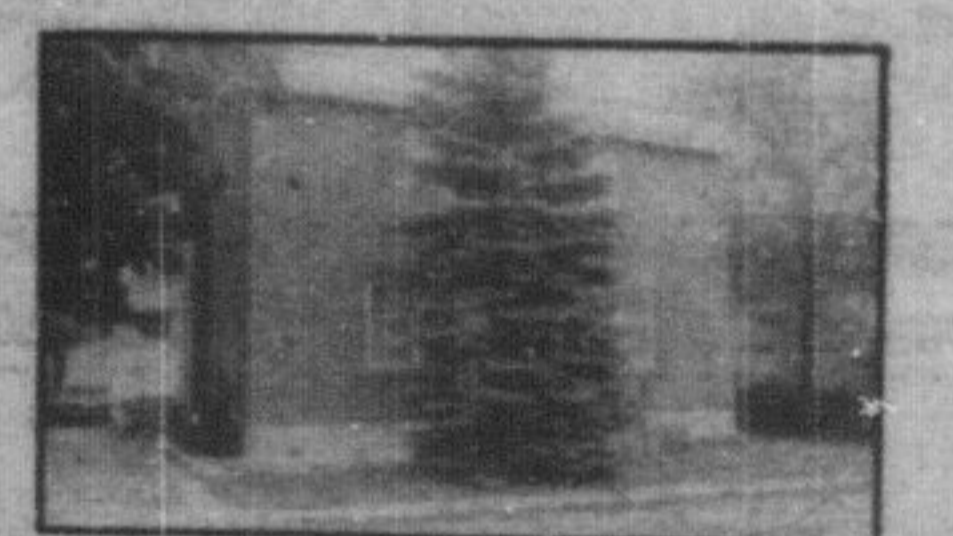
THE FIGURES ARE LOW

Listed at \$42,500, a 3 bedroom townhome with a 12% mortgage until 1985 with 4 appliances included, eat-in kitchen, walkout finished rec room. Please call Eva Gooding. M82-43



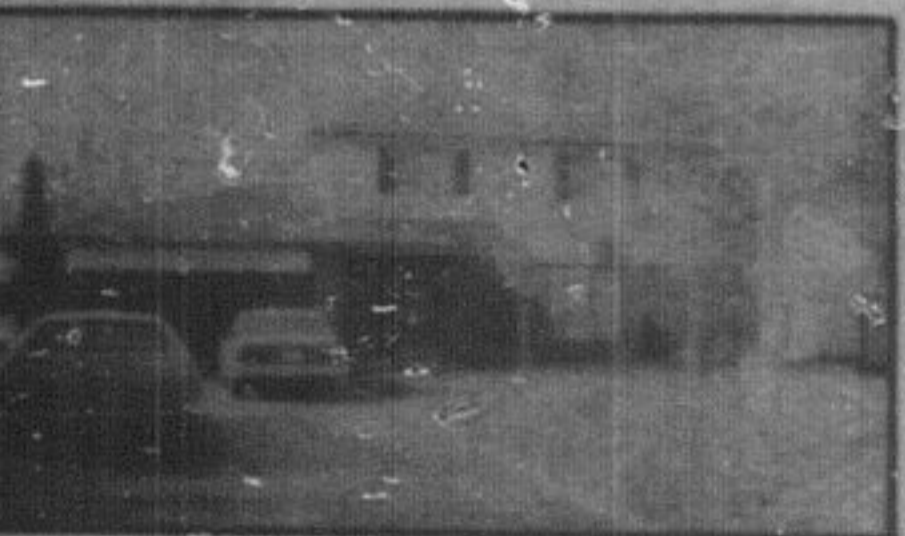
EXECUTIVE TOWNHOME

Completely finished with 4 bedrooms and built-in beds, eat-in kitchen with pantry, separate dining room, walkout, new broadloom, mahogany trim throughout, garage, landscaped lot. Please call Eva Gooding. M82-59



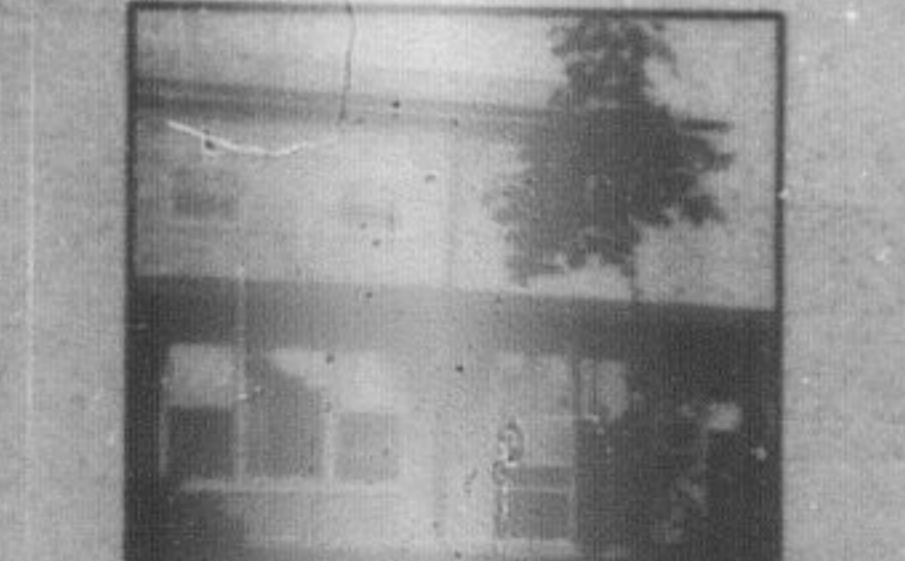
OLDIE GOLDIE - \$59,900

In super condition, eat-in kitchen, separate dining room, 3 bedrooms, detached garage, porch, new furnace and new broadloom, recently redecorated. Please call Eva Gooding. M82-09



EXECUTIVE COURT

Spacious, 2 storey home, close to schools, plenty of privacy. Super lot. Call Brian Green. M82-76



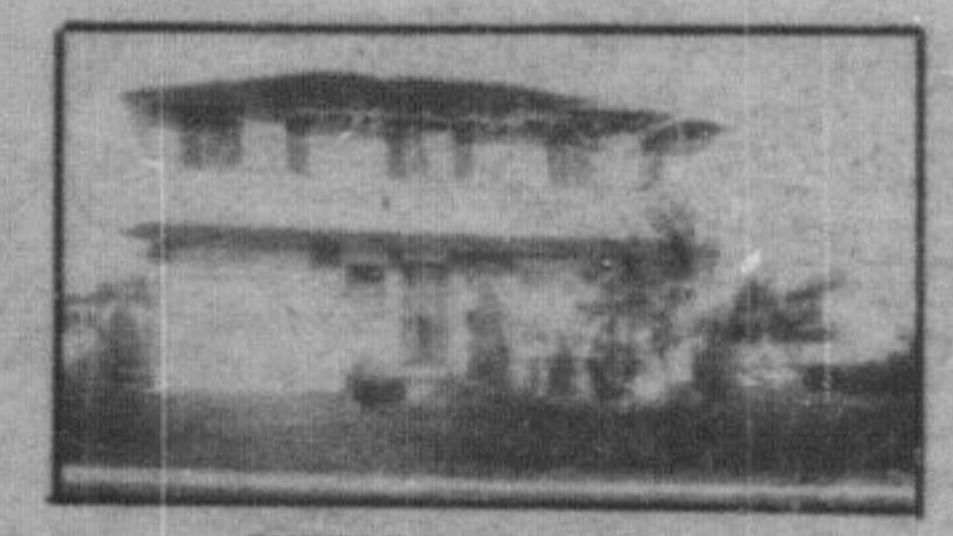
LIVE IN BEAUTIFUL KILBRIDE

Located just minutes west of the Guelph Line. Excellent schools and store. Features inground pool 18x36 completely fenced, family room with reclaimed brick fireplace, bar, many extras. View now. Listed \$109,500. Call Marg. M82-68



COMFORTABLE AFFORDABLE

All this can be yours in this bright 3 bedroom home. Tastefully decorated, main floor family room, fireplace with walkout to patio. Master bedroom has super ensuite, large powder room. Look at the financing \$58,954 at 10% until March, 1985. Call Marg Boyd. Listed at \$107,900. M82-73



SUPERB FAMILY HOME

You won't know what you're missing unless you call and inspect this lovely 4 bedroom, 2 storey home in Dorset Park. Located in the heart of Milton - close to schools, shopping and GO Train. Priced to sell at \$81,500. Please contact Helene Page. M82-74

GREAT BUY
5 1/2 acres in Milton, 480 foot front all levies paid, well water. \$61,900. Vendor will help with financing. Iona Nicholson. M82-42

BUILD YOUR DREAM HOME
Traded building lot. Nice location. Separated and surveyed. Listed at \$38,900.00. Please call Bill Currie. M82-15

RECREATIONAL LOT
5.8 acres with mature trees, ideal for campers, secluded area, listed at \$18,500. Please call Eva Gooding. M82-51

1/2 OF AN ACRE
Build your dream home, minutes from Milton and 401, well established homes in the area, listed at \$45,000. Please call Eva Gooding. M82-52

50 ACRES
Hwy. 25 frontage just south of Milton. Loads of potential, excellent financing. Call Pauline Hobbs for details. M82-38

LANDLORDS? WHO NEEDS THEM!
\$49,900 2 bedroom home, large country lot, 4 appliances, double garage, 4 minutes to 401, call Iona Nicholson. M82-40

CAMPBELLVILLE CUSTOM BRICK
Charming 3 bedroom country home over 1800 sq. ft., family room with lovely fireplace, walkout from formal dining room, beautiful landscaping on 2 1/2 acres \$135,000.00. Iona Nicholson. M82-44

LOT
On Kingsway Place, one of Milton's most exclusive areas. This lot will lend itself to a walk-out basement. Asking \$55,900. Call Pauline Hobbs for details. M82-77

GENTLEMAN FARMER
50 acre working farm - good house and bank barn - close to Mohawk Raceway \$169,000. Call Sandi Kinsale. M82-63

HORSE LOVERS
50 acres with pond, good barns, 8 box stalls, 9 paddocks, century home, \$159,900. Call Sandi Kinsale. M82-82

FOR LEASE
2-1500 sq. ft. units, Main Street location. Call Bill Currie. M82-66

10% DOWN
3 bedrooms, central air, large rec room, single car garage, at an affordable price. Call Pauline Hobbs for details. M82-31

LAND & VIEW & CONVENIENCE
Invest in 2.84 acres, with a super view and build in the future, only 3 miles from 401, a great commuting location. Call Marg Boyd. M82-67

"Our Strength is our People"

Dave Addison
878-7079

Sandi Kinsale
876-1878

Pauline Hobbs
878-7747

Bill Currie
878-4944

Iona Nicholson
854-9883

Helene Page
878-2995

Eva Gooding
876-1641

Marg Boyd
854-2106

Brian Green
878-0322