

# Board delays task force until January

A Needs Task Force will not be considered by the Halton Board of Education until January.

A bid by Halton Hills' trustees Arlene Bruce and Betty Fisher to establish the task force effective September, 1982 was tabled until the new board is inaugurated.

The task force would comprise taxpayers, members of the business community, students, trustees and educators from each municipality of the region. It would examine the educational process so that taxpayers are able to clearly identify educational needs of the Board of Education.

In a report to the board, Bruce and Fisher explained the Task Force would be parallel in some ways to the Special Education Advisory Committee now formed and would centre upon educational needs other than special education.

The Task Force would examine the board's goals; examine the needs of the board as established in the long-term plan; examine issues that have been referred to the Task Force by the Halton Board or by

public and private groups; maintain awareness of provincial developments regarding provisions of educational services; assist in planning information systems for parents and taxpayers; and report to the board in an interim report by November of this year with a final report by January 1983 at which time the committee would disband.

## Black Creek meeting topic

Black Creek Pioneer Village must be doing a lot of things right: in a 10-month season it attracts about 300,000 visitors.

The Milton Historical Society at its May 27 meeting (7.30 p.m. at the Milton Public Library) gets the background story of the village has grown from a single building in 1957 to more than 30 today. All are pre-1867.

Black Creek Pioneer Village, one of metro Toronto's most popular attractions, represents a typical crossroads community of pre-Confederation years. The settlements—and Milton is an example—sprang up to serve neighborhood farmers, the curator says.

When the railroads came through in the latter part of the 19th century, most villages that happened to be on the right-of-way, prospered. Others less strategically placed went into decline.

Jean Hughes, a native of Wales, has a background in education and library work. She joined the Pioneer Village 20 years ago, five years after arriving in Canada. She has been curator since 1971.

not be a committee which would add to the board's costs, instead she said it would be made up of volunteers with the only expense being the rental of the room wherever meetings are held.

"We have in the past few months been deluged with concerns from business community and taxpayers," she told the other trustees. A task force would help the communication system.

The Needs Task Force would help in making certain decisions, Fisher said, but it will not have the power to dictate.

Mary Bullock, trustee for Burlington, wondered if the Task Force would be disrupted because of the November 8 municipal election. She suggested it be tabled for six months, which was supported by Noel Cooper, also of Burlington.

Fisher contended the September timing of the force was excellent.

Bill Lawson, of Milton, claimed he felt the task force was an "over-reaction" to the present

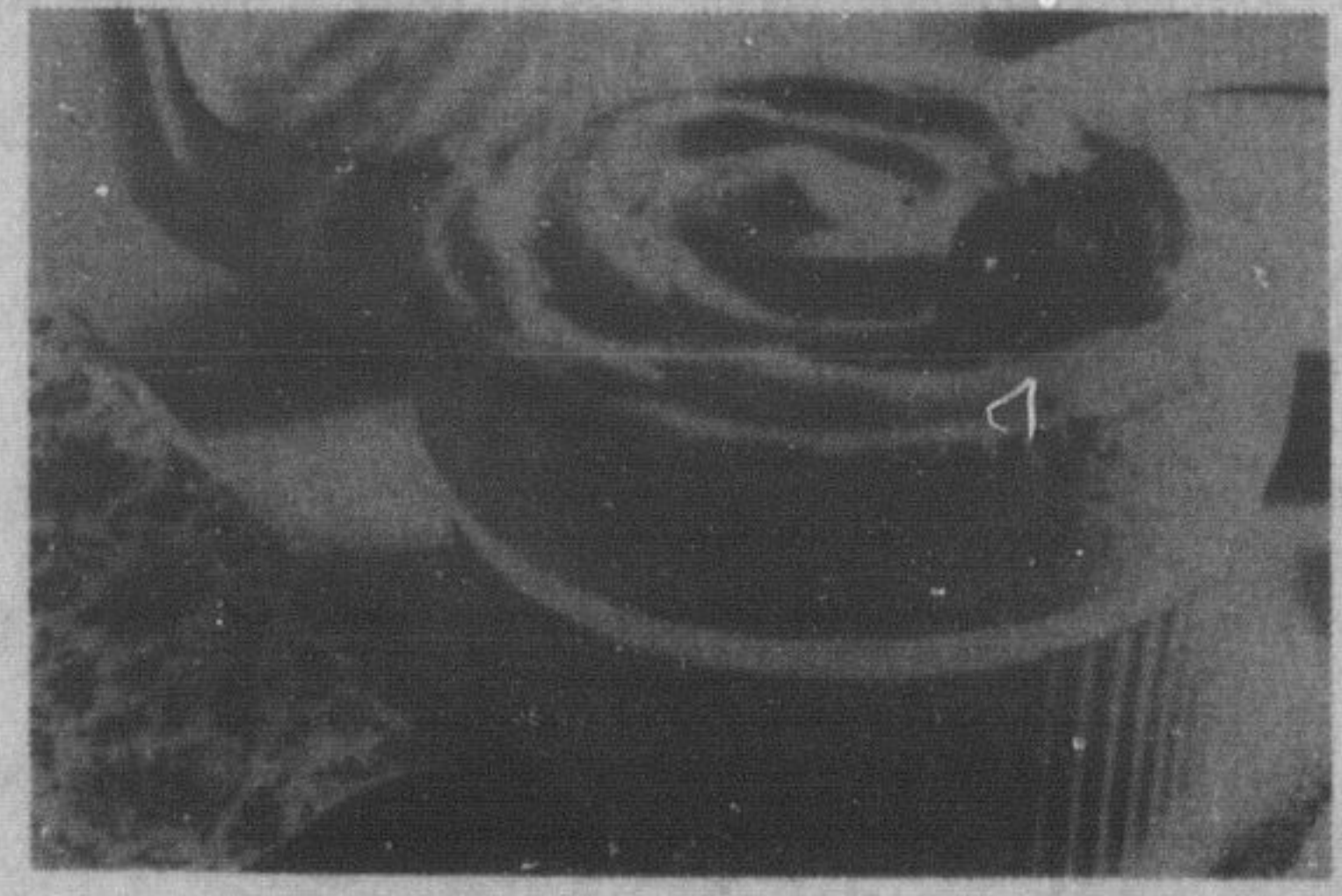
situation in the community. He said he could not support it.

Esqueing representative Betty Walker wanted to know how the task force would be structured, what kind of controls would be on it and how would it be determined who would sit on it. She said she did not want to see it turn into a bitch session, and was concerned about the costs involved.

Fisher explained the costs would be minimal. As far as it turning into a bitch session, she continued, a meeting is only as good as the leadership. If a good person was heading the task force, it would not turn out like that.

Volunteers could be asked to step forward, or they could be handpicked from the communities, Fisher said.

The board voted to deal with the question of a Task Force in January, 1983.



## Recipe Strawberry Souffle

(Makes about 7 cups)  
2 packages (3 ounces each) strawberry jelly powder  
1 1/2 cups boiling water  
1 1/4 cups pureed fresh strawberries\*  
1/2 cup ice water  
1/2 cup Instant Skim Milk Powder  
2 tablespoons lemon juice  
Fresh strawberries  
Mint leaves

Fasten a 2-inch collar around a 1-quart souffle dish. Dissolve jelly powder in boiling water. Stir strawberry puree into dissolved jelly powder. Chill, stirring occasionally, until mixture mounds from a spoon. Combine ice water and skim milk powder in a small mixer bowl. Beat until soft peaks form (3-4 minutes). Add lemon juice. Continue beating until stiff peaks form (3-4 minutes longer). Fold into fruit mixture. Pour into prepared souffle dish. Chill until set. To serve, remove collar from souffle and garnish with whole strawberries and mint leaves, if desired.

\*About 2 1/2 cups washed, hulled whole berries.

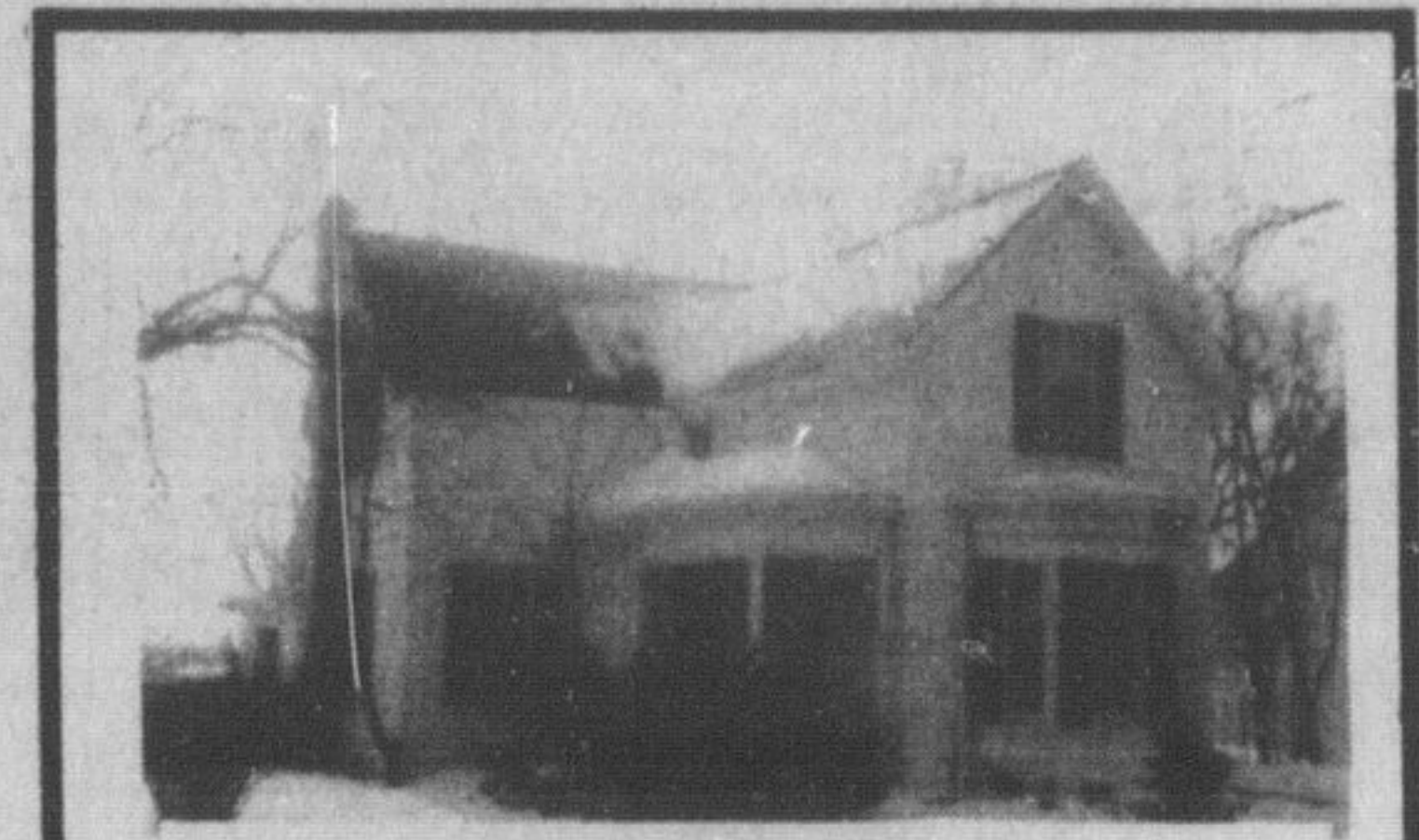
## Society holds plant auction

The bidding was spirited at the recent plant auction held by the Milton and District Horticultural Society. Proceeds from the auction of plants from members' gardens totalled more than a thousand dollars.

Plants put on the block included an exotic hibiscus and an old variety of hydrangea, as well as the more conventional perennials such as iris and delphinium. Even a flower pot full of rocks was offered, and auctioneer Al Odenbach swore that the rocks would grow in size under the proper conditions.

Pies, muffins, biscuits, etc., from member's ovens tempted the large crowd which was in attendance. Several members of the Junior Horticultural group assisted in carrying the purchased plants to the bidders.

Proceeds of the sale of plants and baked goods will be directed toward the beautification of Milton. In the past, funds raised by the Society have been used for such projects as the planters on Main St., the planting of shrubs at the Optimist Centre and trees at the Milton District Hospital.



## CHARMING HOME ON TREET LOT IN QUIET OLDER MILTON

Spacious eat-in kitchen with dishwasher, family room with fireplace and walkout to deck, large dining room and living room with cathedral ceiling, 3 bedrooms, private backyard, close to schools and shopping.

"FINANCING AVAILABLE"

Call 878-5825

**C. GORDON TODD LIMITED**  
2108 LAKESHORE ROAD  
639-3300



## "COUNTRY — 1/2-ACRE — 401 HWY."

- \$99,900 for this gorgeous ranch
- ground-level family room with fireplace
- 3 bedrooms, 2 full baths (incl. en suite)
- located in a subdivision of 54 homes
- central vac., elec. garage opener, 200 amp. elec.

DAN KOVALICK 1-639-3300 or 1-637-2962.



## "REDUCED — CAMPBELLVILLE"

- \$132,500, 10 acres — "HORSES"
- 4 bedrooms, basement walk-out
- bright, private, gorgeous setting
- pool, small barn, orchard
- 389 foot frontage, 1.115 feet deep, great land.

DAN KOVALICK 1-639-3300 or 1-637-2962.

**Bayley MacLean** A Professional Real Estate Team  
REAL ESTATE LTD. 350 Main St. E., Milton 878-0565  
826-9380 Toronto Line

**JUST A TASTE**  
of the long list of luxury features included in this Custom Executive home on 10 gorgeous ACRES with creek and pond. About 5,000 total square ft. of living/playing space including beautiful INDOOR POOL CENTRE. Top quality construction throughout. For a list of features, call today! CY ANDERSON or ELSIE DIMITROPOLOS 632-8222. Realistically priced at \$389,900.

**RE/MAX** of oakville Ltd. 842-4800  
407 speers rd. (in the heart of Oakville Business Park)  
An International Network of individually owned & operated real estate offices.

**WHAT A LOT!!**  
Immaculate 3-bedroom home on beautifully kept oversized lot. Lrg. kitchen, spacious L-shaped LR/DR, air-conditioned, fenced privacy area for those hot days, take a look now. Reduced to sell... Asking \$88,900. Call JUNE JELL 842-4800 or 878-3686.

**COUNTRY LIVING**  
With the conveniences of town. Mature well kept brick bungalow on almost an acre of lawns and garden. 3-bed., LR, DR, kitchen, 4-pc. bath & sun room, 1 1/2 garage. Asking \$127,500. Call JUNE JELL 842-4800 or 878-3686.

**TOWNHOUSE**  
Lrg. light & airy well kept home. Convenient to Town and GO Train. 3-bed., LR, DR, kitchen, laundry room, fully finished family rm., 1 1/2 bath & grge. 10 1/2% mtge. Early possession. Asking \$52,900. Call JUNE JELL 842-4800 or 878-3686.

**TOWNHOUSE**  
Well finished 3-bed. home with fenced-in backyard and grge. Breakfast bar in kitchen. Redwood finished fam. room, lrg. 1st mtge and other features. Asking \$44,900. Call JUNE JELL 842-4800 or 878-3686.

**CONDO**  
4th floor unit with 2 bed., 1 1/2 bath. Close to stores & all conveniences, early poss. at 10 1/4% mtge. Asking \$44,500. Call JUNE JELL 842-4800 or 878-3686.

**TOWNHOUSE**  
9 3/4% mtge. lrg. 3-bed. home with central air, grge. lrg. basement area & fenced yard. Good location. Asking \$53,900. Call JUNE JELL 842-4800 or 878-3686.

**OFFICES OR HOME**  
2-bed. home on lrg. lot suitable as handyman's special or for small business venture. 13 1/4% mtge. Immed. poss. Central Oakville. Asking \$81,900. Call JUNE JELL 842-4800 or 878-3686.

**HWY NO. 5**  
Lrg. Century home, 5-bed. on 2 acres. Everything for the horse lover including barn and fenced paddock. 10 1/4% mtge. Priced to sell. Asking \$159,900.

**OFFICES OR HOME**  
2-bed. home on lrg. lot suitable as handyman's special or for small business venture. 13 1/4% mtge. Immed. poss. Central Oakville. Asking \$81,900. Call JUNE JELL 842-4800 or 878-3686.

**CAREFUL BUYER'S DREAM**  
The price is right on this 3 bedroom stone home on large lot, with excellent mortgage of \$50,000. at 13 1/2% until Aug. 1985 all for \$72,000. More information call Jack or Bonnie 878-0565.

**ONCE YOU'VE LOOKED - YOU'LL BE HOOKED**  
on this 4 level backsplit with a main floor family room with ark trim fireplace, future games room and mortgage at 12 1/2% until Dec. 1985. Call Bonnie & Jack 878-0565.

**A HOMEY GLOW**  
Warmth abounds in this 3 bedroom semi-detached with corner fireplace in living room, mortgage of approx. \$51,000 at 11% until June 1985. Call Bonnie 878-0565.

**THE ANSWER IS YES!**

8.6 Acres	YES
Well	YES
Septic	YES
Hydro & Telephone	YES
Fully Fenced	YES
Vendor Take Back	YES

Call Jack or Bonnie 878-0565.

**LET'S MAKE A DATE**  
to see this newly listed three bedroom home. Full finished basement, huge, well cared for yard. Special features include air tight wood stove, central air, hardwood floors under broadloom and good financing. Priced right at \$92,900. Call Jackie Verdurmen at 878-0565.

**BEGIN THERE**  
Immaculate 3 bedroom townhome backing onto single family homes, extra long drive, 2 baths and exceptional 10% financing. Call Jackie Verdurmen 878-0565.

**ARE YOU TIRED OF CLOSE ENCOUNTERS OF THE FAMILY KIND?**  
because your family has got too large for your present home? We offer a 2 storey, 4 bedroom, 2 baths, family kitchen with ceramic tile floor, spiral staircase, oak wainscoting fireplace and much more! Under \$90,000. Call Jackie Verdurmen 878-0565.

**A CURE FOR THE COMMON HOME**  
Elegantly appointed, very good condition century home with fireplace, high ceilings, hardwood, leaded trees and many extras. For your exclusive appointment call Jackie Verdurmen 878-0565.

**ON THE MOVE**  
This very large backsplit features a large family room with an anglestone fireplace and walkout, main floor laundry, mud room, 4 bedrooms and many more extras. For more information call Wendy 878-0565.

This tastefully decorated bungalow has a finished rec room, fourth bedroom and a workshop in the basement, a large fenced yard and is on a quiet court. For mortgage details please call Wendy Bahn, 878-0565 or 878-1166.

**MUST BE SOLD**  
Step inside this wellbuilt brick home in the older part of town and see the elegance of the separate dining room with a large bay window and a cozy living room with fireplace. Great value at \$89,900 with \$50,000 in good financing. Extra large lot and huge barn with loft are other features. Call Jean Thomson 878-0565 or 878-0767.

**PRICE REDUCED**  
The owner of this attractive townhouse with cedar deck off the living room have already moved and are looking for quick sale. Superior location and excellent financing at 10 1/4%. Definitely worth a visit. Call Jean Thomson 878-0565 or 878-0767.

**PUT ON A HAPPY FACE**  
We have the home for you with assumable 11 7/8% mortgage, three bedrooms, a separate living dining room and an eat-in kitchen. For more information call Wendy or Terry 878-0565.

**LORD SIMCOE CRT.**  
—4 bedrooms  
—main floor family room  
—fireplace  
—excellent location  
—for all the details and to view call Jim Kerr 878-0565.

**COMMERCIAL INVESTMENT**  
—Main street location  
—detailed prospectus available  
—7 commercial units  
—3 residential units  
—redevelopment potential  
—Contact Jim Kerr at 878-0565.

**INCOME PROPERTY**  
This semi has good financing at 15 1/2% until 1984 and is priced at \$68,900. The 2 bedroom apartment rent for \$375 monthly. Excellent opportunity for easy home ownership. Call Jean Thomson 878-0565 or 878-0767.

**SUPER SIDESPLIT**  
4 levels, 3 bedrooms, 2 washrooms, family room with wood burning stove, eat-in kitchen with walkout. Listed at \$85,900. Please call Janice 878-2942 or Wendy 878-1166 or office 878-0565.

**LIVING SPACE**  
Large backsplit family home, 3 plus 1 bedrooms, oversized eat-in kitchen, large family room with fireplace and walkout to fenced backyard. Call Janice 878-2942 or Wendy 878-1166 or office 878-0565.

**\$39,900.**  
This has to be one of the best bargains in town. Bright end unit with walkout to patio and visitor parking. Separate dining room and huge living room. Must be sold. Call Jean Thomson 878-0565 or 878-0767.

**\$79,900.**  
Excellent financing over \$53,000 at 10 7/8% until May 1985. Please call Darleen Williams for details 878-0565 or 878-1731.

**BAYLEY MacLEAN'S PROFESSIONAL REAL ESTATE TEAM**

Darleen Williams	878-1731	Stella Patton	622-1122 x	Jean Thomson	878-0767
Jim Kerr	878-0565	Jack Seenooy	844-8913	Jackie Verdurmen	878-0565
Terry Chuchmuth	878-5359	Bob Martin	878-6996	Bonnie Watson	878-2274
Rejane Petroff	878-8282	Joanne Thompson	878-3794	Janice McMaster	878-2942
Jack McCurdle	878-8955	Dorothy Hoine	878-1467	Wendy Bahn	878-1166