

# Region

## Parents to pay their share

Parents whose children are placed in private residences by court order can expect a call from a Halton Region social worker in the future.

Members of the health and social services committee decided to toughen up on such parents and get them to pay a share of the cost of keeping their children in those private homes, rather than in provincial training schools.

In a report to committee members, social services director Debbie Oakley said that when juveniles are placed in those circumstances, provincial laws require the municipality to pay the costs, but allows it to collect something off the parents.

Now parents will be contacted by a representative of the social services department income maintenance division who will be working to decide if the parents can afford to make a contribution, and how large a contribution, to the care of their child.

## Derry Rd. construction

A Rexdale company has been awarded a \$1 million contract for the reconstruction of Derry Rd. in Milton.

Members of Halton's administration and finance committee last week approved awarding the contract to Fermax Paving Ltd. of Rexdale.

The contract will see the road reconstructed between Appleby Line and Tremaine Rd.

In a report to committee members, public works director Bob Moore said this reconstruction project has been a pressing need since the early 1970s.

Currently, he wrote, Derry Rd. in this area is "characterized by an undulating alignment, with narrow shoulders, many visibility restrictions, as well as overall structural inadequacies."

It is also the major east-west truck route in the region, he added.

## New jobs in town

New and expanded industries in Halton have resulted in 242 new jobs during the first three months of 1982, members of Region's administration and finance committee were told recently.

In his quarterly report to committee members, business development director Matt Fischer said 26 companies have committed to locate or expand in Halton, resulting in 390,750 square feet of new plant and 242 new jobs for the region. Tax revenues for local and Regional governments will total \$262,580.

Throughout the region, he added, residential building permits worth \$17.1 million were sold in January and February, up 53 per cent from the same time last year. Sales of industrial and commercial permits were down by 35 per cent however.

In Milton, four new firms will bring 25 new jobs to the town.

## U.I.C. to get tougher

Changes being planned for Canada's unemployment insurance program could have a very expensive impact on welfare costs in Halton, members of the Region's health and social services committee were told recently.

A federal government task force report recently recommended increasing the length of time that people must work in order to qualify for benefits, increase the length of time they may be disqualified for minor offences and shortening the total length of time that workers can collect benefits.

Social services director Debbie Oakley told councillors that these changes would simply increase the number of people forced to turn to the region for welfare assistance before or after they have exhausted support from UIC.

Some estimates have placed a \$17 million price tag on the proposed changes.

Committee members were asked to endorse a resolution from Essex County opposing the changes, but decided instead to simply forward the question to the Association of Municipalities of Ontario and express concern over the effect the proposals would have on local budgets.

"It seems like we're being offered a lot of carrots and then the stick really whumps you when you get to the bottom line," commented Oakville Coun. Carol Gooding.

—Steve Arnold

## Ontario Hydro

# Threading a fine line...

By JANE MULLER  
Champion Reporter

An interesting and money saving form of aerial acrobatics took place in Milton last week when an Ontario Hydro helicopter threaded a guiding line through 11 kilometers of a 500,000 volt power corridor ending in Milton.

The 33 kilometer section, strung last Wednesday and Thursday, will be a second joining line between the local transformer station, located on the west end of Main St., and Claireville transformer station. According to Doug Christensen of Hydro community relations, this represents an important link and is the only high voltage line in the province to be doubled up.

The line will be part of "the power backbone of the province" when it is completed in early October, says Mr. Christensen. The power corridor will fit into the bulk electricity system and transfer power from Ontario's main power plants.

The project began in January 1981 and is expected to be completed and transmitting electricity within five months. Stringing the line will take until September, but last week's activities indicate the process is well under way at least along the western part of the line.

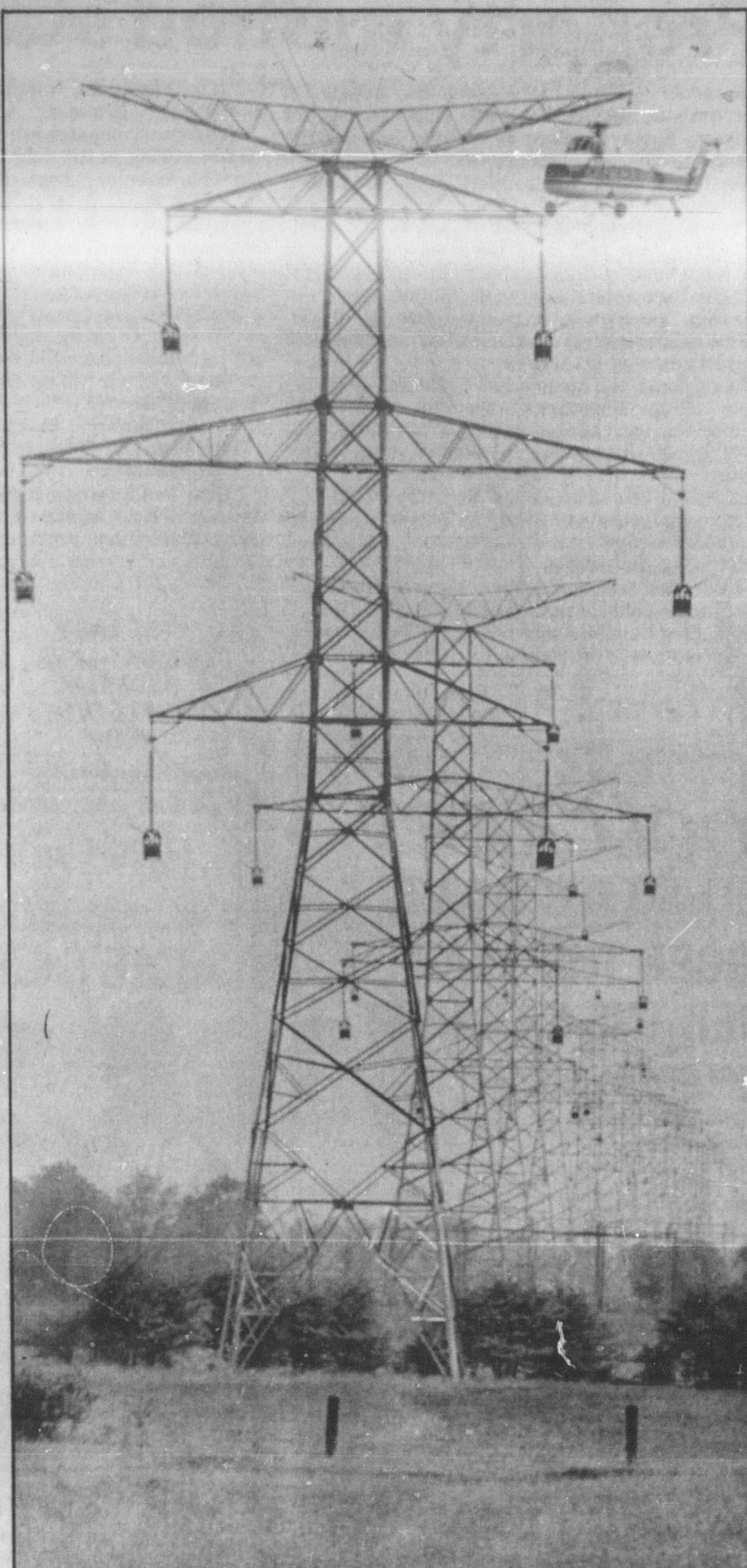
Hydro utilizes helicopters to thread a "fly rope" through pulleys where the permanent line will eventually be strung. The light-weight nylon rope, three-quarters of an inch in diameter, is light enough to be carried and threaded by the helicopter, but not strong enough to pull the conducting line into place.

The helicopter places the fly rope on the pulleys, which are equipped with locking devices to keep the line in place. Ground machinery is used to pull the fly rope which is attached to a more sturdy line. This second line has sufficient strength to pull the three-quarter inch steel cable through the conductors.

In addition to saving time and manpower, the use of a helicopter also saves the environment along the corridor from being disturbed by men and land vehicles. The process of installing spacer dampers to keep the four conductor lines from touching each other is carried out in part with the use of a battery powered aerial cable car.

Reminiscent of mountain gondolas, the cable cars also minimize contact with land surrounding the power corridor as the operator can move along the entire length of strung conductor cables to install the dampers.

This project is part of a continuing Ontario Hydro development approved as part of the parkway belt corridor in 1977 to keep in step with this province's electrical demands, Mr. Christensen said.



The "fly line" put into place with the help of a helicopter will guide a heavier rope through hydro towers which pulls into place the conductor cable. The aerial maneuvers were carried out in Milton last week along a new hydro corridor running parallel to the existing one.

# Two die on 401

A holiday in Canada for a California family ended in tragedy Friday afternoon when two of its members died in a crash on Highway 401 near Milton. The Tam family of four were less than 10 minutes from Toronto International Airport, where they were due to catch a flight home to San Francisco, when the accident occurred in the eastbound lane of the highway near Sixth Line at about 4.15 p.m. Milton OPP are still trying to establish why the accident occurred that took the life of 57-year-old Soquien Tam and her 31-year-old daughter, Yim Wah Tam.

Miss Tam was rushed to Milton District Hospital and later transferred by helicopter to Toronto Sunnybrook Hospital with severe head injuries, but died less than 24 hours later. Two other passengers, Calvin Tam, 25 and Yuen Yim Tam, 59, sustained lacerations and were later released from Milton District Hospital. Police said they assume neither Mrs. Tam nor her daughter were wearing seatbelts as both were thrown from the car when it rolled. Milton OPP are requesting anyone who witnessed the accident to call police at 878-2307.

# How to select a replacement window

All replacement windows are not alike. The best value in replacement windows will combine convenient and economical installation, energy efficiency, and easy cleaning with no need to ever paint, all backed by a warranty.

The Woodoor R-800 replacement window meets the challenge.

### Ease-of-Installation

The Woodoor R-800 replacement window is designed to fit right into your existing window frame.

Your contractor can install R-800 replacement windows in a matter of hours. You could even do it yourself!

### Energy Efficient

Woodoor R-800's are constructed of non-conducting, rugged white vinyl that stays warm to the touch on even the coldest days.

And to make our windows even more energy-efficient, each window is completely weatherstripped to seal out drafts and cold.

Look for the energy saving features of the Woodoor R-800 when selecting your replacement windows.

### Easy-to-Clean

With the Woodoor R-800 you can put your ladder away. Our windows can be cleaned from the safety and comfort of the inside of your home.

Look to the Woodoor R-800 when selecting replacement windows that are easy-to-clean.

### Never Needs Painting

Woodoor R-800's are constructed of tough, rugged white vinyl that never needs painting. They don't crack, peel or chip and will stay new looking for years to come.

Look to Woodoor R-800 when selecting replacement windows that never, never need painting.

### Warranty

Woodoor R-800 replacement windows are guaranteed to be free of defects in material and workmanship and our insulating glass is also fully warranted.

Woodoor is a division of Dashwood Industries Limited of Centralia, Ontario. Canada's largest window manufacturer supplying quality windows and doors to Canadian homes for 54 years.

Look to Woodoor R-800 for replacement windows that are guaranteed to stand the test of time.

Call us today or send in the coupon below.



90 Engelhard Drive,  
Aurora, Ontario L4G 3L6  
Aurora phone (416) 727-9459.  
from Toronto (416) 883-4932

Please send me your Free catalogue Window Renovation

Name: \_\_\_\_\_  
Address: \_\_\_\_\_  
City: \_\_\_\_\_ Phone No. \_\_\_\_\_

# Sheridan Youth Home gets new operator

By JANE MULLER  
Champion Reporter

Some loose ends still remain but the Ministry of Community and Social Services has established an agreement with Casatta Ltd. of Kitchener to operate Sheridan Youth Home when the current administrative body steps down June 13.

Although the legal agreement with the ministry has not been signed and the budget remains tentative, Olga Danyluk, program supervisor of the children's services division, said details will be worked out over the next few weeks.

The operational shuffle at the Milton-based observation and detention centre for juvenile offenders was put into motion in April when Sheridan's volunteer board of directors failed to obtain an additional \$20,000 to operate the home. Board president Bryan Clarke felt the \$347,800 operating budget offered by the ministry was not sufficient for the home to carry on the quality of service it has offered since the facility opened three years ago.

Diane Kochendorfer of Casatta Ltd.

is currently director of a similar home in Kitchener. The new operator also manages a children's receiving home in the Kitchener area.

When Mr. Clarke announced the board would absorb its administrative responsibilities, he expressed concern the community element which the volunteer board provided would disappear as the ministry took over the home's administration.

In a press release from the ministry announcing the agreement with Casatta Ltd., area manager Ron Childs stressed a community voice will still be part of the home serving both Halton and Peel Regions.

A "broad based community advisory board composed of representatives both from service users, the Children's Aid Society, police and other community interests" is in the process of being formed.

A meeting is scheduled today (Wednesday) between the new operator and Sheridan staff for the purpose of interviewing for positions under the new management.



Limited Field —  
Enter Early

# Plan To Enter ... The 1st Annual Canadian Champion CHARITY GOLF TOURNAMENT

Friday, July 23, 1982

INDIAN WELLS GOLF &  
COUNTRY CLUB  
5377 Walkers Line, Milton

Shot gun start  
at 12:00 noon

\$35.00 per player

includes Roast Beef Dinner  
& Dance

Entry forms available at  
Indian Wells or the  
Champion office

All proceeds to  
the Milton District  
Hospital Expansion  
Fund.

## PRIZES

INCLUDING

• 1982 MERCURY

— 1st Hole In One on Specified Hole  
Courtesy GALLINGER MOTORS LTD.

Living Lighting turns you on to savings of

25% to 30%

FINAL 4 DAYS

Save 25%  
on all outdoor fixtures!  
Living Lighting will save you up to a huge 25% on all outdoor lighting fixtures. Choose from antique brass or chrome finish in three sizes: 2, 3 and 4 foot. Easy to install. See brochure.

Save 25%  
ALL TRAX  
By LIGHTOLIER  
TRACK LIGHTING  
25% OFF

Hurry, Sale ends  
Saturday, May 29, 1982

Save  
30%  
on beautiful polished  
brass swing arm lamps!  
Choose from wall mount or floor model both have  
pleated shades and triage switches.

A. Wall Mounted Style B. Floor Lamp  
76.99 97.99  
Reg. \$109.99 Reg. \$129.99

Save 25%  
on vanity light setups!  
The modern lighting system for today's bathrooms.  
Choose from antique brass or chrome finish in three  
sizes: 2, 3 and 4 foot. Easy to install. See brochure.

White Quantities Last  
"One every day low price."

LIVING  
LIGHTING  
turns you on!

BURLINGTON MALL  
TELEPHONE 632-5788

OPEN: MON. WED. 9:30-6:00  
THURS. 10:00-6:00  
SATURDAY 9:30-6:00

## Storage Problem?

We're the solution  
Individual rental spaces • Variable sizes

SELF  
STORAGE

East of  
Holiday Inn  
on North  
Service Road

Contact:  
Reg. Bull. 842-4590  
U store it • U lock it • U keep the key

A NEW CONCEPT IN SELF STORAGE

