

Real Estate



Located in one of the prime areas of town, this lovely four bedroom brick home has much to offer. Set on a large landscaped ravine lot, this home backs onto the picturesque Sixteen Mile Creek.

Large brick home backs onto creek

This distinctive four-bedroom brick home is located in one of the prime areas of town on a quiet, treed crescent close to schools, shopping and parkland.

The very large, fully landscaped ravine lot backs onto the picturesque Sixteen Mile Creek and features an 18' by 15' sun deck of pressurized wood. Outdoor mature plantings include juniper, pine, cedar and mountain ash.

Double front doors open into a large formal foyer, which has been professionally finished with high quality vinyl floor covering and includes a two-piece powder room.

The combination living room and dining room with ample window area is more than 29 feet long and carpeted with high quality broadloom.

The entrance also leads to a main floor family room which is highlighted by a woodburning fireplace and has a walk-out to the sun deck.

Laundry facilities are located off

the family room, but nicely out of view of the main rooms.

The spacious and sunny breakfast room is adjacent to the working area of the kitchen at the rear of the home and features a walkout to the sun deck and a beautiful view of the Creek.

Stairs lead up to the extra large master bedroom, which features a full ensuite bath and a double-sized walk-in closet. The second level also includes three additional good-sized bedrooms and a full bath.

This home is heated with a forced air gas furnace and the attic insulation value is R-28.

The discriminating buyer will appreciate this unique home which provides about 2,365 square feet of space for both active family living and gracious entertaining—in short, a home to cherish.

To arrange a private viewing of this elegant home, attractively priced at \$144,000, please call Royal Trust Corporation of Canada at 878-8188.

Royal Trust Corporation of Canada

REALTORS' CHOICE

By LINDA KIRBY
Champion Reporter



The discriminating buyer will appreciate this unique home which has a magnificent view of the Sixteen Mile Creek from the rear of the home. This home has plenty of living space, 2,365 square feet—perfect for the growing family or the couple who enjoys to entertain.

FOR SALE

Royal Trust

THE SIGN THAT SELLS

Royal Trust

878-8188

TOR. LINE 826-9707

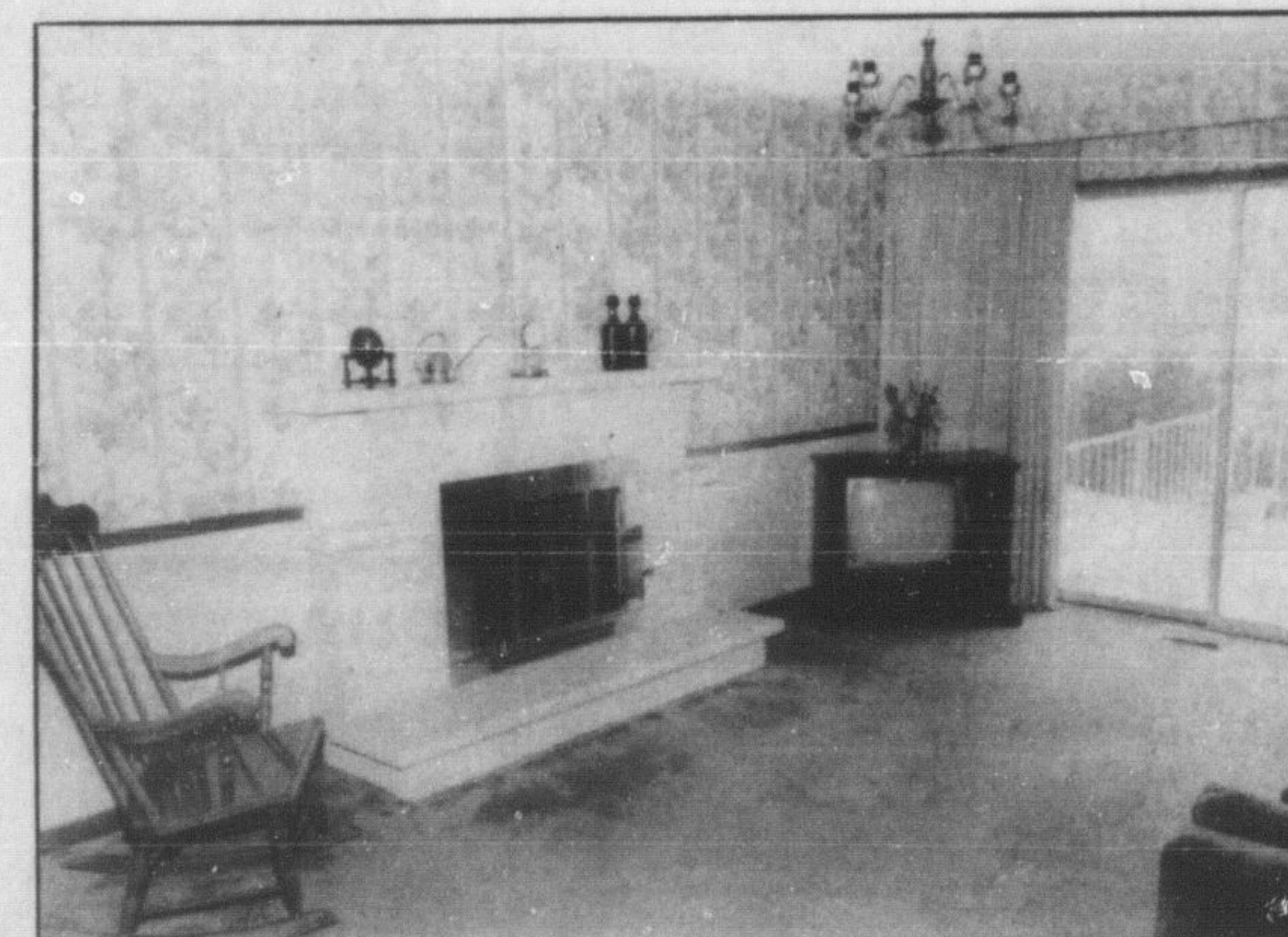
476 STEELES AVE., MILTON 878-8188
(DORSET PARK PLAZA) TOR. 826-9707

Real Estate Services

ROYAL TRUST CORPORATION OF CANADA, REALTOR



Bright and spacious, this kitchen features a lovely breakfast area with a view of the Sixteen Mile Creek.



The main level family room has the added attraction of a walkout to the sun deck. The brick woodburning fireplace makes this a perfect place for family gatherings or entertaining on a winter evening.



This large formal living room is enhanced by huge picture windows facing the front lawn. This room is adjoined by a formal dining room.

 <p>CLASSIC TUDOR SHOWPLACE A residence of great dignity with over 4300 sq. ft. 5 bedrooms, 3 baths, 4 fireplaces, family and games rooms, separate wing. Pat Lambert 878-0980.</p>	 <p>REDUCED \$43,000 TO SELL Escarpment large family home. View of Toronto. 6 Bedrooms, 3 baths, small barn. 9% Mtge. until August/84. Low heating costs. Pat Lambert 878-0980.</p>	 <p>FRIENDLY "WEE" HOME Low price will surprise you. Neat as a pin—2 Bdrm, 57 x 157 lot. A \$57,900 sweetheart. Ilona Nicholson 854-9883, 878-8188.</p>	 <p>ANXIOUS VENDOR SAYS SELL! \$83,900—Good value for this 3 bdrm home with oversized fully fenced yard. Vendor may assist with fin. at 15%. Ha-el Boon 878-8188, 878-1252.</p>	 <p>GET MORE FOR YOUR MONEY \$114,900 Drive a little further—100 acres, 4 Bdrm—large bank barn—90 acres workable, 8 acres sugar maple—stream. Ilona Nicholson 878-8188 or 854-9883.</p>
 <p>\$54,000 at 11% TILL JUNE 84 Excellent backsplit, close to schools, pool sized yard, central area of town, \$79,900. Call Ilona or Audrey 878-8188.</p>	 <p>SPACIOUS COUNTRY LIVING Nearly new roomy 4 bdrm brick home, 2 fpl, 3 baths, 2 kitchens, etc. 5 Mins from Milton and 401. Call Audrey Newell 878-5339.</p>	 <p>TOTAL PRIVACY ON 51 ACRES Creative owner will love this unique luxury home minutes from Milton & 401. Has 10 plus rooms. Ken Newell at 878-5339.</p>	 <p>HARMONIOUS HOME Lots of finished living space plus fireplace plus covered patio, plus, plus. Phone for appt. Ken Newell 878-5339, 878-8188.</p>	 <p>JUST LISTED—\$144,000 Executive 4 bdrm home on large ravine lot backing onto Sixteen Mile Creek. Denise Kerslake 878-8188 or 876-1735.</p>
 <p>LARGE BACKSPLIT NEW LISTING Family room with fireplace plus walkout—large living rm—Large eat-in kit. A dream to show! Stewart Haddon 878-3574.</p>	 <p>EVERYTHING'S RIGHT \$92,900 Low interest mortgage till '85. Large lot—family room with fireplace—immaculate. Les or Sylvia Bursey 878-8188 or 878-1038.</p>	 <p>SPACED OUT? Is your hobby taking over your home? The 21' x 42' heated workshop with this cosy 3 bdrm home will, help. Ken Newell 878-5339.</p>	 <p>BIG AND BEAUTIFUL! \$108,900. Oversize kitchen, den, family room with fireplace. 3 bdrms—fantastic location. Les or Sylvia Bursey 878-8188 or 878-1038.</p>	 <p>JUST REDUCED—\$104,900 Close to downtown—large lot—4 bdrms—2 baths,—rec room—good financing—A. Lear-Costigan 878-8188, 878-9151.</p>
 <p>OPEN HOUSE—SUN. APRIL 11 CAMPBELLVILLE ESTATES Luxury 4 bdrms—3 baths, whirlpool tub, panelled library—family rm—fireplace. A. Lear-Costigan 878-8188, 878-9151.</p>	 <p>1/2 ACRE COUNTRY \$134,900 Quality built 3 bdrm bungalow. Minutes to "GO" & 401. Over 2000 sq. ft. finished living space. Les or Sylvia Bursey 878-8188, 878-1038.</p>	 <p>A RARE FIND \$114,900 4 Bdrms, professionally finished rec rm—kitchen with walkout to heated pool—walk to all amenities. Les or Sylvia Bursey 878-8188, 878-1038.</p>	 <p>PICTURESQUE—\$71,500 Enjoy the quaint charm of Campbellville in this 3 bdrm home set on a large treed lot. Vince Burnett 878-3520.</p>	 <p>INVESTMENT! INVESTMENT! \$139,900 We got it! 105 acres recreational retreat. 2 trout ponds—already rented. Vendor will help with 12% financing 5 yrs. I. Nicholson 878-8188, 854-9883.</p>
 <p>COUNTRY CHARM IN TOWN Gorgeously decorated 3-4 bdrms—pine floors—sun porch—2 fireplaces. Mature treed lot. Lynn Gordon 878-8188 or 854-2719.</p>	 <p>ATTENTION PART-TIME FARMER! Realize your dream! 30 ac—4 bdrm home plus 2 bdrm home to help pay mtge—rent out stalls—near 401. I. Nicholson 854-9883, 878-8188.</p>	 <p>COUNTRY DELIGHT—\$88,900. 3 bdrms—double car garage—heated workshop—located on 1/3 acre—minutes to 401—\$48,000 at 12% till '86. Les or Sylvia Bursey 878-1038, 878-8188.</p>	 <p>OUTSTANDING VALUE! 3 Bdrm Semi—upgraded carpeting—finished rec room—brick fireplace in living rm \$50,000 mtg till '84. Charles Wilton 878-8188, 878-0689.</p>	 <p>DON'T HAVE TO BE RICH Listed at \$101,900 this 4 bdrm 2 storey offers so much! Come and see! Charles Wilton 878-8188, 878-0689.</p>
 <p>BIG HOME—BIGGER VALUE! 3 Large bdrms—main floor family rm—Walk out to large lot—super mtg at 14 1/2% 2 yrs Charles Wilton 878-8188, 878-0689.</p>	 <p>A LOT FOR A LITTLE \$95,900 3 Bdrm Backsplit 2 baths—rec rm—large lot—inground pool—fruit trees. Charles Wilton 878-8188, 878-0689.</p>	 <p>ACCENT ON VALUE Beautifully designed 3 bdrm—full of features. Think of one and this has it! Charles Wilton 878-8188, 878-0689.</p>	 <p>DEVELOPMENT—COMMERCIAL 0.9 Acre Zoned C1—Suitable for offices, stores, with apts over. Vendor will hold 1st Mtge. Some income. Ken Newell 878-5339.</p>	 <p>VACANT LAND ROCKWOOD \$39,900 2 Acres fronting on Hwy 7. 12% Mtg to 1983 Charles Wilton 878-8188, 878-0689.</p>
 <p>JUST LISTED 42 Acres—Potential horse farm—A. Lear-Costigan 878-8188, 878-9151.</p>	 <p>JUST LISTED 2 Acre estate lot—Close to Milton—Magnificent view of escarpment—Bldg permit available. Andrea Lear-Costigan 878-8188 or 878-9151.</p>	 <p>JUST LISTED \$4200 DOWN, FIN 'TIL '88! \$45,900 Security at last! You can afford this well located 3 bdrm end unit offering many extras. Hazel Boon 878-8188 or 878-1252.</p>		