



## The snow's the thing

There's less than two weeks to go, but keep thinking snow!  
And, don't forget to buy your Winter Carnival pins. For a buck, you can't lose!

Friday Feb. 12, 1982

**Bingo**—The Senior Citizens Club will hold a bingo at the Canadian Legion Hall from 2 to 4 p.m. Special transportation will be arranged for seniors.

**Parade**—A parade, from Town Hall to Rotary Park, led by Prince Jason Dent and Princess Suzanne Tompkins and Milton Mayor Gord Krantz, will begin at 7 p.m.

**Opening Ceremonies**—The Prince and Princess will be crowned and a bonfire and sing-a-long will follow. It all begins at 7.35 p.m.

**Old School Room Dance**—The Milton District Pipe Band will march up Martin St. at 9 p.m. to kick off the dance at Holy Rosary Parish Hall. The purchase of a box lunch will be the admission to the dance.

**Public Skating**—This will take place all weekend, with Milton Rotary Club manning a concessions booth (selling coffee and hot chocolate).

**Sleigh Rides**—Horse drawn sleighs will provide rides all weekend from Rotary Park to John Martin House.

Saturday Feb. 13, 1982

**Pancake Breakfast**—The Rotary Club will start your morning off right with this function. It is expected to begin at 8 a.m. at Milton Sports Centre and possibly earlier.

**Family Skating**—There will be free family skating at Milton Sports Centre from 8 a.m. to noon.

**Snowball Contest**—The Rotary Club will begin this unique event at 10 a.m. at Milton Sports Centre.

**Snowmobile Obstacle Races**—Arnold's Lawn & Garden, North End Datsun, Man's World, Can Travel, Milton Snowbirds and Apollo Enterprises will entertain, beginning at 10.30 a.m. at Laurier Park.

**Polar Bear Tennis**—It will be whites everywhere for this spectacle at Milton Sports Centre. It begins at 11 a.m.

**Bridge Tournament**—The Rotary Anns are organizing this non-Master points tournament at Holy Rosary Parish Hall. Tickets are \$2 each, are limited to 140 players and the action begins at 1 p.m. Tickets are available at The Canadian Champion, Bus Knights Men's Wear, The Flora Shoppe and The Nutmeg.

**St. Valentine's Day Dance**—The Optimist Club will sponsor this dance at the Optimist Club beginning at 8.30 p.m. Tickets are available at The Canadian Champion or from Optimist Club members.

**Hot Air Balloon Rides**—This is the first of many events taking place at Glen Eden (Kelso Conservation Area). Free shuttle bus service will be provided. The rides, which are \$1 each, take place between noon and 4 p.m.

**Family Snow Sculpturing Contest**—This event kicks off at noon.

**Snow Shoeing**—Snow shoes will be available for rent at \$1 per hour from noon to 4 p.m.

**Cross Country Skiing**—Skiing will be on, at \$2 an hour, beginning at 2 p.m.

**Ice Skating Races**—Kelso Dam will be the location for this event, beginning at 1.30 p.m.

**Downhill Toboggan Races**—This kicks off at Glen Eden at 1.30 p.m.

**Ballet Skiing Demonstration**—Another Glen Eden event, this kicks off at 2.30 p.m.

**Donut Eating Contest**—This appetizing competition, sponsored by Tim Horton Donuts begins at 2 p.m.

**Motorcycle Demonstration**—Halton Off Road Riders will have an ice race on Kelso Dam, beginning at 2 p.m.

**Dog Sled Demonstration**—This begins at noon at Glen Eden.

**Sleigh Rides**—These begin at noon at Glen Eden.

**Warming Station**—Films, food and fun at Glen Eden all day.

Sunday Feb. 14, 1982

**Family Brunch**—The Knights of Columbus will start Sunday's activities with a brunch at Holy Rosary Parish Hall from 1 to 3 p.m.

**Polar Bear Demonstration**—Bruce McIntosh of the Hamilton chapter of the Polar Bear Club will brave the cold for a dip in the Mill Pond at 1.30 p.m.

**Broomball Tournament**—Girls and boys from Milton District High School and E. C. Drury High School will square off at noon at Laurier Arena in what is expected to be an annual affair.

**Curling Demonstration**—Milton Curling Club will demonstrate the art, beginning at 2.30 p.m.

**Wood Sawing Contest**—Halton Sportsmen's Club will organize this event, which kicks off at 1 p.m.

**Dunking Machine Contest**—Anybody got a wetsuit? The Lions Club has this one covered.

**Tug-Of-War**—Milton Fire Fighters, the Dickens and Milton Flag Footballers will be teamed up and pitted against each other in this one, beginning at 2 p.m. at Rotary Park.

**Mutt Show**—It all begins at noon.

**Scavenger Hunt**—Sponsored by the Rotary Club, it begins at 2 p.m. at John Martin House.

**Family Skating**—There will be family skating at the Mill Pond from noon to 4 p.m.

**Warming Station**—Ventriquoist Lois Ross will perform at the Rotary Park Community Centre at 1.30 p.m. and 2.30 p.m.

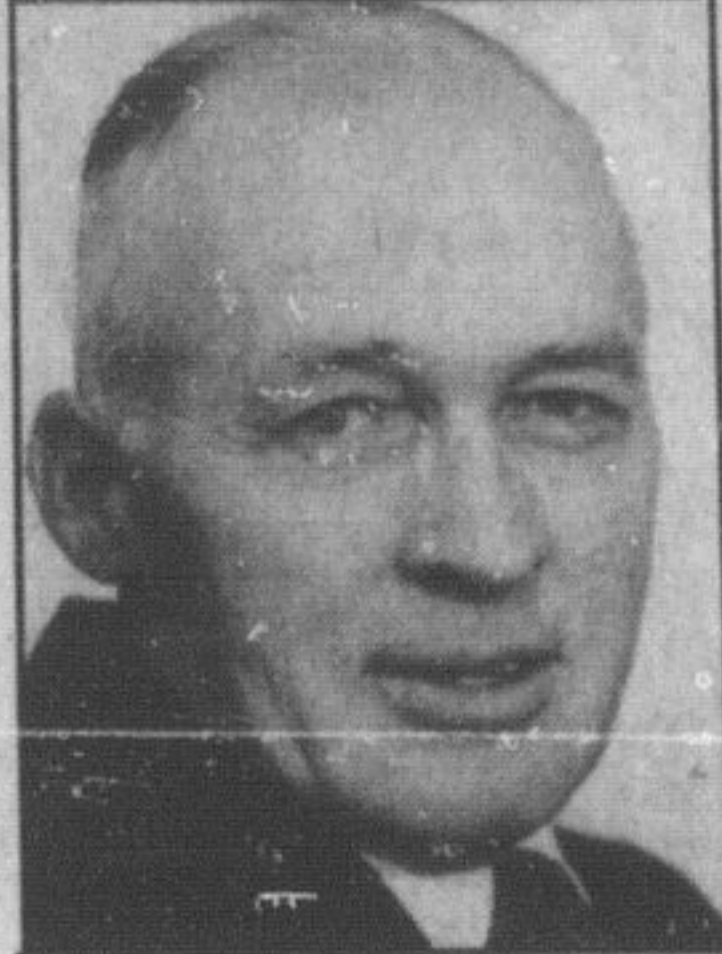
**Broomball Game and Closing Ceremonies**—Milton Town Council and Radio Station CHWO will square off at the Mill Pond at 4 p.m. for a half hour battle.

### Lawson says

## Board doing all it can in Timberlea

By STEVE ARNOLD  
Champion News Editor

Everything that can be done to get a second school in Milton's Timberlea community is being done, according to a former chairman of the Halton Board of Education.



BILL LAWSON

Bill Lawson, trustee for Milton, made his comment during a rebuttal of recent statements by Town councillor Rick Day.

Mr. Day commented last week that planners for the Halton Board of Education and Provincial Ministry of Education were "stupid" for not planning on construction of a second school in the Timberlea area of Milton earlier.

"Are their planners so stupid that they can't see Milton is a developing area," Mr. Day was quoted as saying. "It just seems that they don't know what they are doing."

Speaking in defence of Halton staff, Mr. Lawson said local planners have been developing a second school in that area for the last three years.

He added that on two occasions during the last three years he appeared before Milton council and asked members not to advance the phasing of the Timberlea and Bronte Meadows subdivisions because of the problems that would be created for schools in those areas.

"There is nothing of value in the statements of an uninformed critic like Mr. Day," trustee Lawson said. "Never once has Coun. Day contacted me about our state of readiness for a second school there."

"If his statements are not directed at our Board, but at the Ministry, then I fail to see how they will give credibility to any officials of council seeking an audience with the Minister," Mr. Lawson added.

He said board of education staff are already working on plans for handling further children in the Timberlea area, if Provincial authorities do not provide the necessary money for a second school.

"I believe that the board of education will have a firm plan of action by March," he said. "It's safe to say that if the Ministry cannot permit us to get a school on stream by September, we will have alternate plans."

Sam Sherratt School, which currently serves children from the Timberlea area, has eight portables on the site and Mr. Lawson said no more could be added.

"Portables are an alternative that just aren't available to use any more," he said. "We have ruled them out."

Mr. Day, when contacted, refused to back down from his comments, saying they could apply equally well to local or Provincial staff.

"For whatever reason, these People seem to be surprised to find out that new schools are required when 1,500 unit subdivisions are approved," he said, adding that the board of education is one of the agencies to which new development plans are circulated.

"The whole point of circulating to them is so they won't be surprised, but they continually are," he said.



### Viva Italia

Sonya Vascotto, 20 was chosen over five other competitors as Miss Italy, a contest sponsored by the local Italian-Canadian Club.

### Champion appointment



MARGARET JONG

Mike Hall, Advertising Manager for The Canadian Champion, announces the appointment of Margaret Jong as a display advertising representative.

Miss Jong, 19, worked at The St. Catharines Standard while studying advertising at Mohawk College.

Miss Jong is a Hamilton native, is single. Her appointment is effective immediately.

## LEASE A LYNX

All Lynx's Feature a FREE 2 Year "Carefree Maintenance Package"

2 Door	Hatchback, 4 Sp., AM, Cloth Trim, Mouldings, R. Defroster, Front Wheel Drive, Stock No. 2011.	\$159.
4 Door	Hatchback, 4 Sp., AM, Reclin. Cloth Seats, R. Defroster, Front Wheel Drive, Stock No. 2025.	\$164.
Wagon	"L Series", 4 Sp., Reclin. Cloth Seats, Sport Mirrors, R. Defroster, Front Wheel Drive, Stock No. 2001.	\$174.

All Lynx's in stock for quick delivery.  
See Dave Gallinger  
Gallinger Leasing

LEASING 655 Main St. E., Milton 878-2883 Ext. 15 LEASING

# StClair

# 1/2 PRICE SALE

## On All In-Stock Wallpaper

\*1/2 Price off the comparable book price or off the StClair everyday price.

Comparable Book Price: These book prices are a guide. These wallcoverings may be purchased elsewhere for higher or lower prices. StClair will match the price or refund the difference if the identical wallcovering can be purchased for less elsewhere within 30 days.

Wallpaper Type	Comparable Book Price Single Roll	StClair Everyday Price Single Roll	StClair 1/2 Price Single Roll
Prepasted Washable Paper	3.99	2.99	1.99
Prepasted Washable Peelable	7.98	5.99	3.99
Prepasted Scrubbable Dry-Strippable Vinyl	10.99	8.99	4.49
Prepasted Scrubbable Peelable Solid Vinyl	11.99	8.99	5.99
Prepasted Scrubbable Dry-Strippable Vinyl	8.49	6.99	3.49
Prepasted Washable Peelable Mylar (Foil)	14.95	11.99	7.48

In-Stock wall murals not on sale.

StClair Interior flat Latex paint Ceiling white 9070

Ultimate quality for hallways in living/dining rooms, kids bedrooms, high ceilings, etc. 22 litre cans.

Save 1/2 Price!

Low Price Guarantee

Ultimate Flat Ceiling Latex 8.97 gal. Reg. 17.95

# StClair

The paint and paper people

MILTON MALL 878-2629

Mon.-Fri.—10:00 to 9:30  
Sat.—9:30 to 6:00

MasterCard VISA

1 DAY ONLY

# POOL SHOW 82

PRACTICAL DOWN TO EARTH INFORMATION FOR ANYONE PLANNING A POOL

SUNDAY 12 - 6 PM

WATCH CONTINUOUS MOVIES AND DEMONSTRATIONS

TALK TO THE MANUFACTURERS OF POOLS, FILTERS, ACCESSORIES

GET THE FACTS FROM THE EXPERTS

SEE THE POOL FURNITURE AND BBQ'S YOU'VE BEEN LOOKING FOR

LEARN SEE AN INGROUND POOL BEING CONSTRUCTED

DISCOVER HOW EASY IT IS TO OWN A POOL OF YOUR OWN

See It All At Pool Show 82' MISSISSAUGA

FOLLOW THE SIGNS Lots of free and easy parking

EAST OF DIXIE NORTH OF DUNDAS ST. ON WHARTON WAY

Pioneer Family Pools