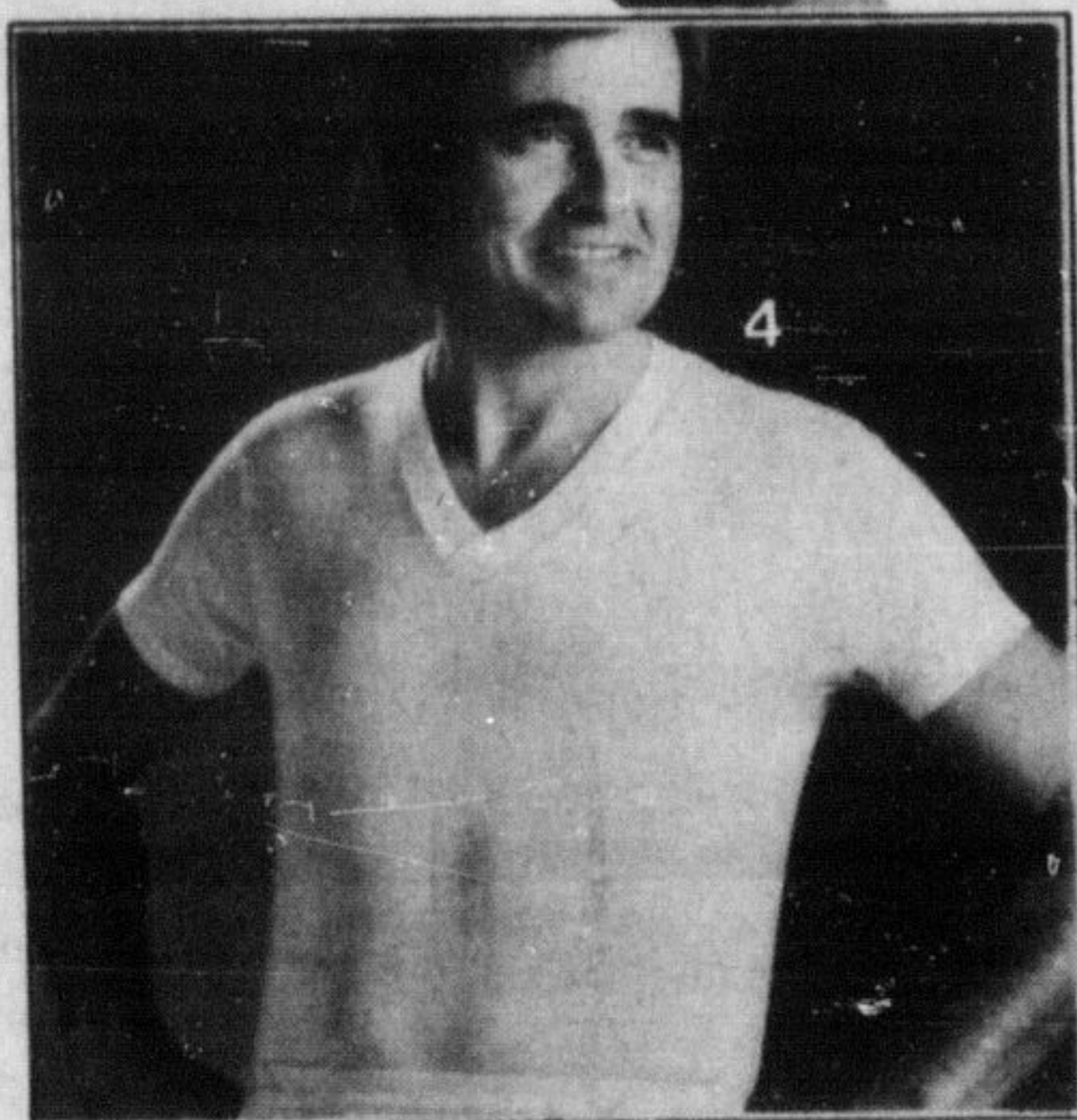
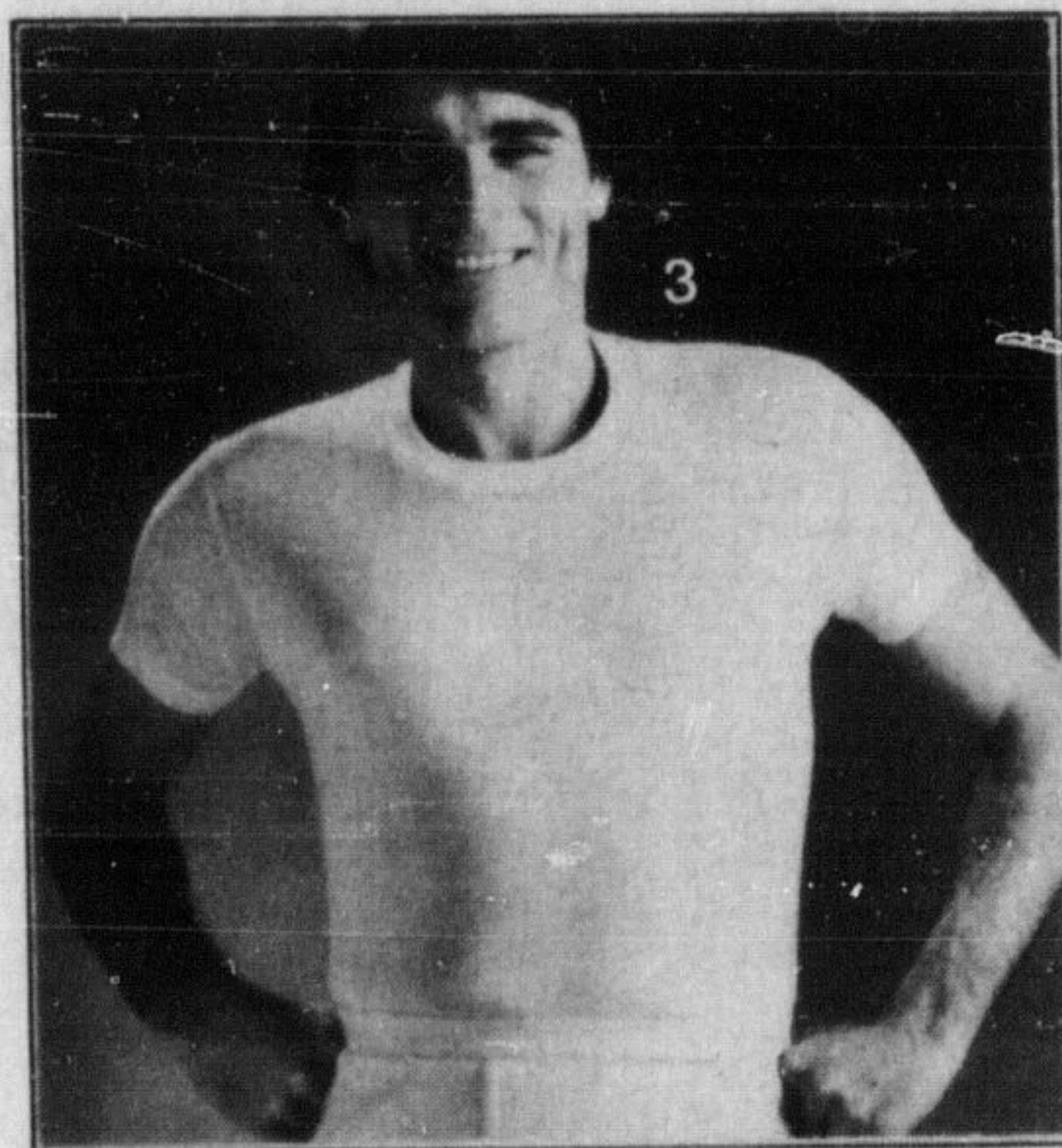


KNOCKOUT SAVINGS! 20% to 29% OFF!

Now's the time to stock up on top-quality basics for men. Phone 861-5111 — and order plenty!



'Eaton' label bodywear

Soft and stretchy in a fine all-cotton knit. Made specially for us, so they've got to be great! Sizes S., M., L., X.L. (196)

1. Athletic-style shirt. White only.

Eaton reg. 4.25, **3 for 8⁹⁹**

2. Comfo-Crotch brief, with ribbed and elasticized legs; double seat. White, navy, med. blue.

Eaton reg. 4.25, **3 for 9⁹⁹**

3. Crew-neck T-shirt, with reinforced neck and shoulders. White only.

Eaton reg. 4.75, **3 for 11³⁹**

4. V-neck T-shirt, with reinforced neck and shoulders. White only.

Eaton reg. 4.75, **3 for 11³⁹**

'Hugger' socks by Harvey Woods

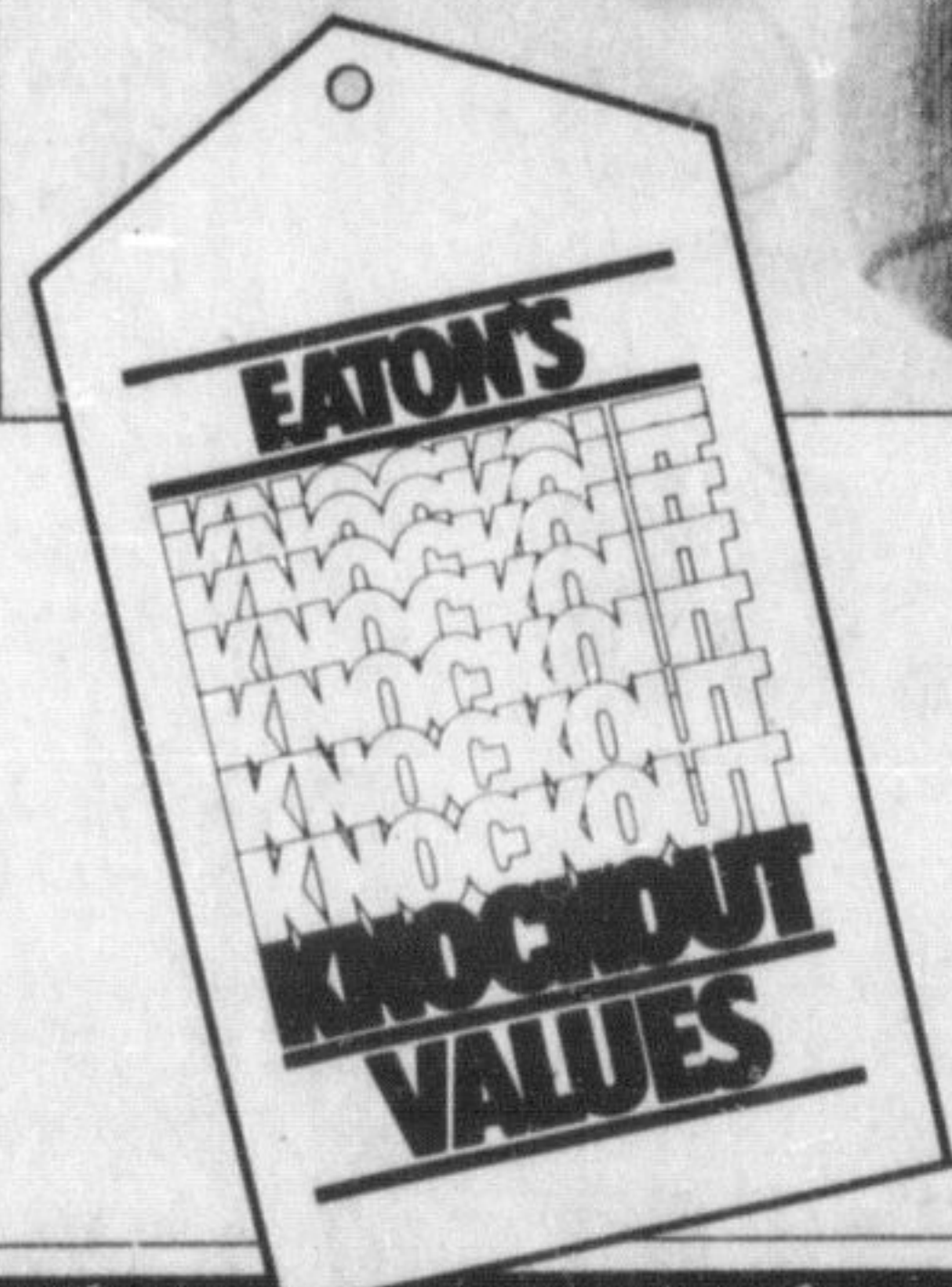
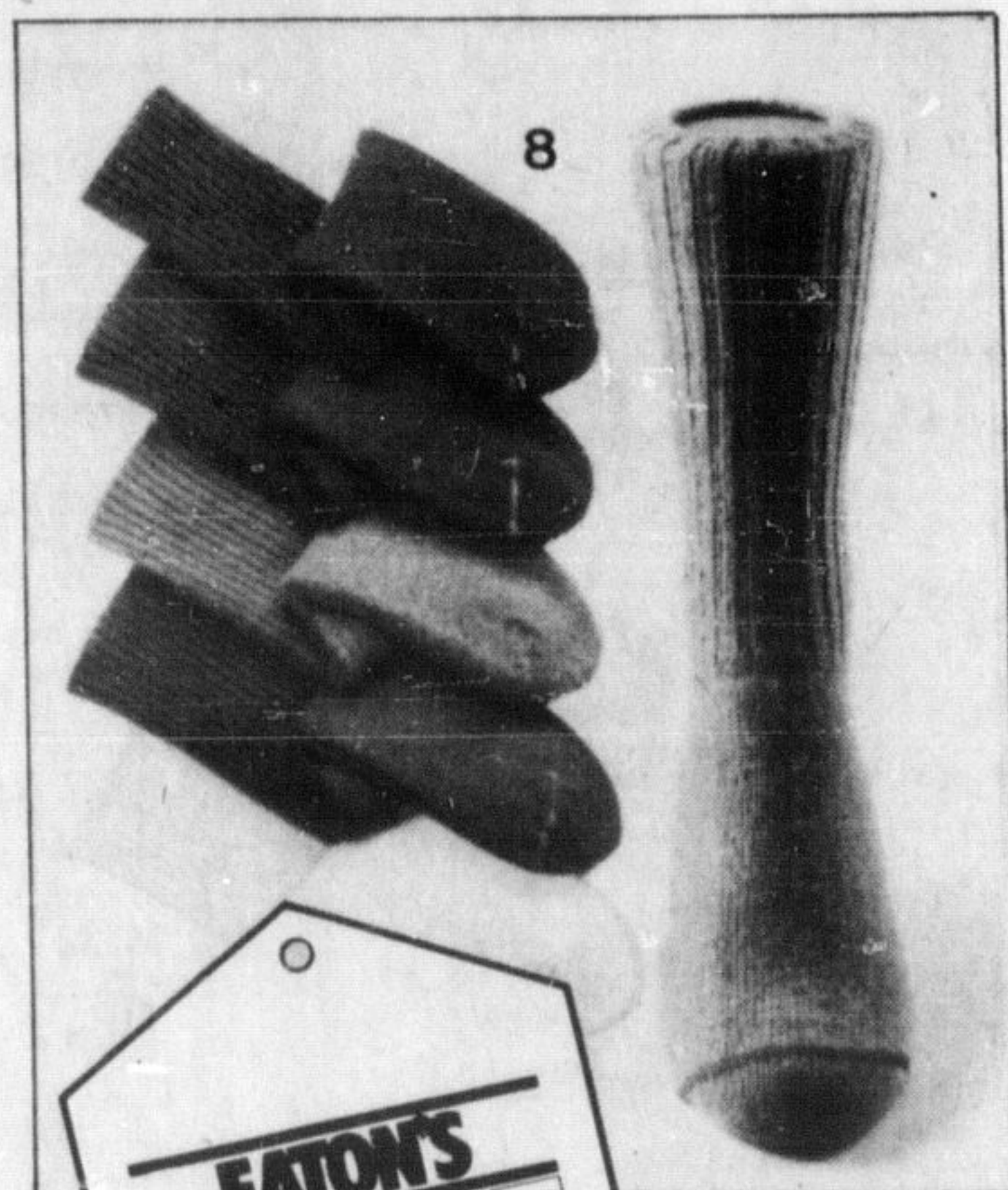
In supersoft Kroy wool-and-nylon; with snug, stay-up tops. One size fits 10 to 12. In black, camel, grey, brown, navy. (201)

Description	Eaton reg.	3 pairs
5. Ankle-length	3.75	8⁹⁹
6. Mid-calf length	4.00	8⁹⁹
7. Knee-length	4.50	9⁹⁹

'Rough-N-Tumble' socks by Burlington

8. Ribbed crew-style in soft-as-wool Orlon (acrylic)-and-stretch nylon. Black, navy, brown, white, grey, blue denim. One size fits 10 to 13. (201)

Eaton reg. 3.75 **3 pairs 7⁹⁹**



PHONE 861-5111

TTY ONLY — 591-2345 (Telephone for the deaf). EATON'S — Toronto Eaton Centre (1 below) — 228; Yorkdale, Scarborough, Sherway, Don Mills, Shoppers' World, Bramalea, Oshawa, Rockwood, Rexdale, Dufferin, Yonge-Eglinton, Victoria Park, Gerrard Square.

Begins today Eaton's Spring

Gold Sale Save 50%

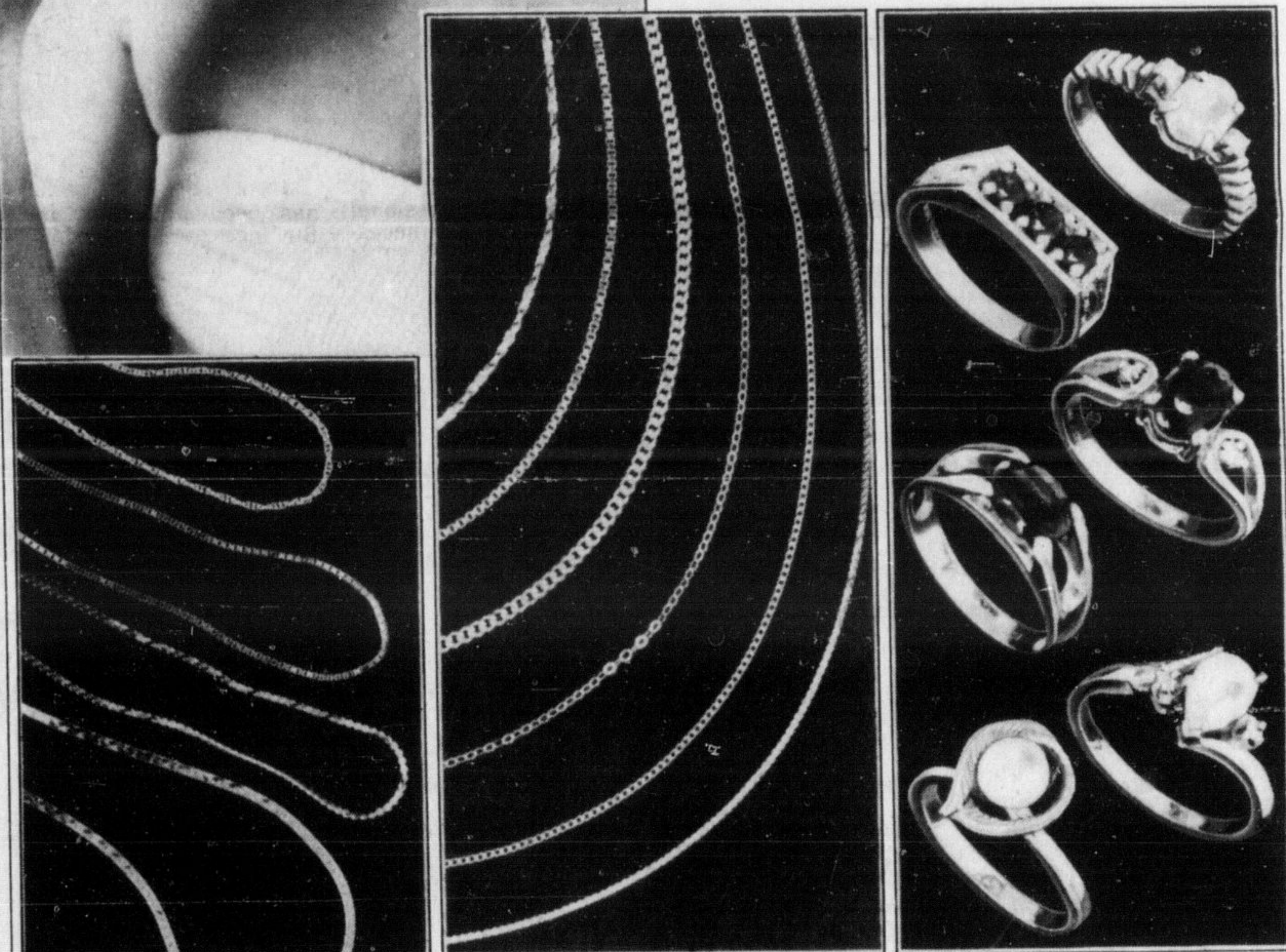
on chains, bracelets, rings in 10K gold



Eaton reg. 40.50 to 202.00, Each

20²⁵ to 101⁰⁰

Go for gold! Join the smart collectors and save 50%. A terrific selection including cable, serpentine and Venetian styles. Chains from 15" to 24", bracelets 7". Women's rings. Some diamond and stone settings. Sale runs till April 4th, but shop early for best choice.



Extra! Specially priced group

14K gold earrings including hoops, studs, and drops. Novelties in 10K and 14K gold: pendants, crosses, fancy chains and bracelets.

Eaton price, each

39⁰⁰ to 88⁰⁰

Personal Shopping Only.

Selection and price range on all gold jewellery will vary from store to store. Jewellery shown not actual size.

EATON'S — Toronto Eaton Centre (main floor) — 215; Yorkdale, Scarborough, Sherway, Don Mills, Shoppers' World, Bramalea, Oshawa, Rockwood, Rexdale, Dufferin, Yonge-Eglinton, Victoria Park, Gerrard Square.

Great gift buys for Easter, Mother's Day, weddings, and graduations.

□ Eaton's — Toronto Eaton Centre: open Mon. to Fri., 10 a.m. to 9 p.m.; Sat. 9:30 a.m. to 6 p.m. □ Yonge-Eglinton: Mon. to Fri., 9:30 a.m. to 9 p.m.; Sat. 9:30 a.m. to 6 p.m. □ Gerrard Square: Mon. to Sat., 9:30 a.m. to 9:30 p.m. □ Yorkdale, Sherway, Rockwood, Rexdale, Warehouse Store, Bramalea, Don Mills, Scarborough, Shoppers' World, Pickering, Sheridan, Oshawa: Mon. to Fri., 9:30 a.m. to 9:30 p.m.; Sat. 9:30 a.m. to 6 p.m. □ Dufferin: Mon. to Sat., 10 a.m. to 10 p.m. □ Victoria Park: Mon. to Fri., 9:30 a.m. to 9:30 p.m.; Sat. 9:30 a.m. to 8 p.m. □ Eaton's telephone order service open 24 hours daily — 861-5111.

EATON'S