

# Main St. drop-in close to reality

A drop-in centre on Main St. for Milton's young people is very close to becoming a reality. The Ontario Ministry of Community and Social Services is prepared to fund 80 per cent of a \$42,000 per year project to put a drop-in centre in the basement of the Lido Restaurant.

Ministry representative Ron Coupland told The Champion a need for accommodating young people in Milton has been identified as an urgent need in Milton.

He said there is now a drop-in centre at the Optimist Centre and there is also the Ministry-seen need to help provide space for young people who need, for one reason or another, a place to go other than home where conditions may not be conducive to normal adolescent development.

Mr. Coupland said such a centre could go into the Lido building. But he said he would like to see the service go into the Optimist Centre with the drop-in centre there being moved to Main St. where it is closer to the needs of Milton's young people.

No matter where the drop-in centre goes, Mr. Coupland said he is convinced a need exists for both services.

He said the Ministry has looked at three options for the special needs centre for those aged between 13 and 19, and have settled on a program similar to one run in Burlington.

Organized by the Port Nelson Youth Association, a rotating team of social workers with special training are available to talk with and

counsel young people who are not fitting into their situation at home.

Mr. Coupland said the Burlington project has been very successful and fits well into the Milton community. He said Milton's Youth Association would initially handle about 12 young people.

That would take about four workers and it would cost about \$40,000 per year to run, but it would be funded mostly by the Ministry of Community and Social Services and would not be a financial drain on the town.

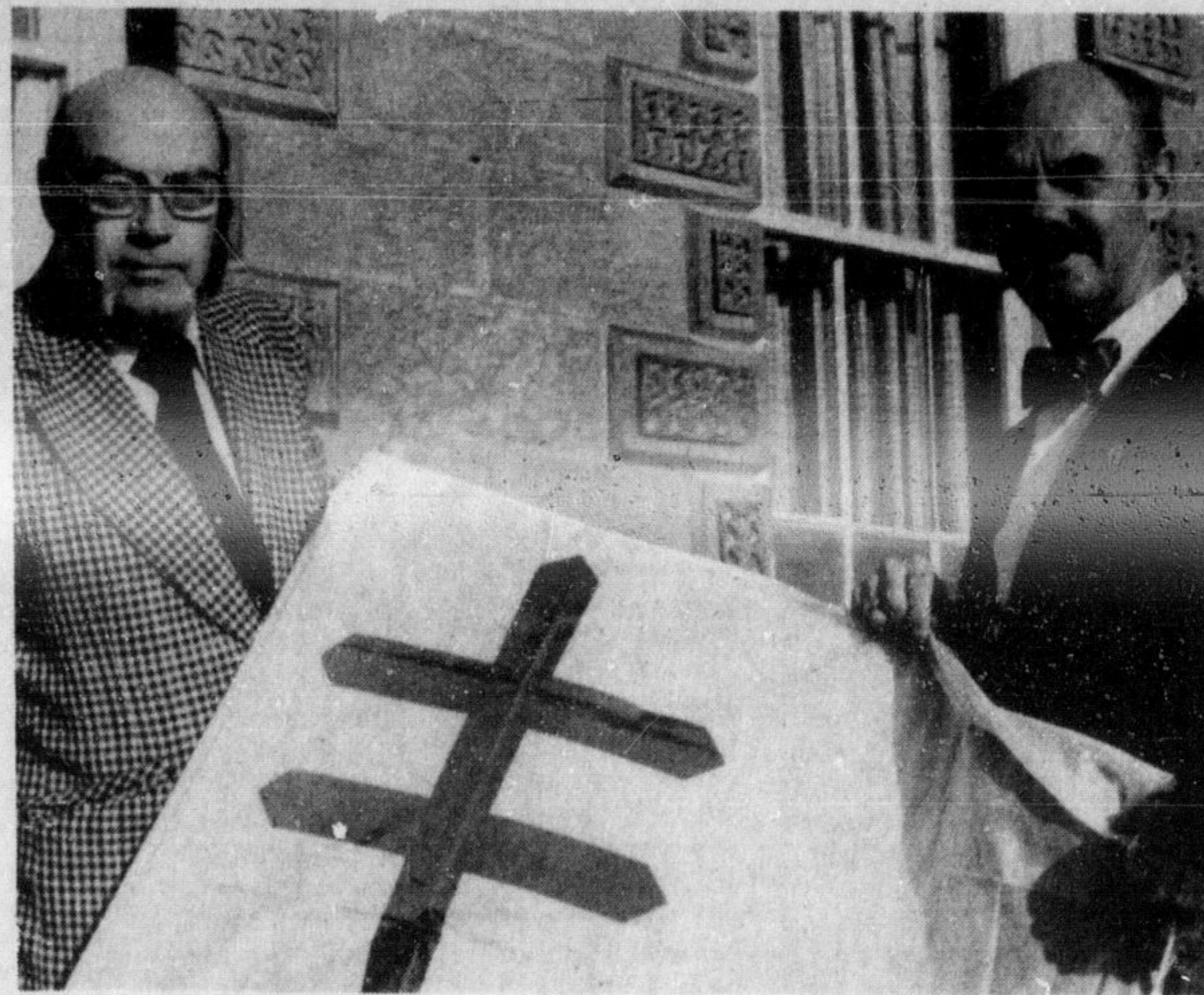
At the same time Mr. Coupland, through Councillor Gus Goutouski, has arranged a rental agreement with the owner of the Lido Restaurant building for the basement portion. Rent would be about \$225 per month.

Mr. Coupland said the Port Nelson Youth Centre would be open from 3 p.m. to 9 p.m. It can begin immediately.

But Mr. Coupland is hoping an arrangement can be reached with the Milton Optimist Club whereby both programs would still be run but locations would be switched.

He said a program of special thrust would better be run at the Optimist Centre while moving the drop-in centre from the Optimist Centre to the Ministry-rented space at the Lido would bring the centre to where the young people are.

Mr. Coupland said he is hopeful the arrangement can be completed as soon as possible so both programs can be instituted at the earliest possible date.



Flag raising delayed. Thursday morning the Canadian flag at Town Hall flew at half mast to acknowledge Judy LaMarsh's Oct. 27 death, from cancer. Mike Ledwith and Mayor Don Gordon hold the Halton Lung Association flag which was to be raised that morning, but the ceremony was delayed until this week out of respect for Miss LaMarsh. The ceremony was to kick off the annual Christmas Seal Campaign.

## Christmas Seals and your support can beat Cancer

More than five million Canadians suffer from lung diseases ranging from the common cold to lung cancer. There were 20,000 lung-related deaths in 1979.

Halton Lung Association needs funds to fight lung disease and public donations are its major source of financing through Christmas Seals. On Nov. 1, Christmas Seals were mailed to 18,466 homes in Halton. Last year's campaign in this area raised \$103,096, of which a small portion was sent to the Canadian Lung Association with the remainder staying in Halton.

Christmas Seal Chairman and Halton Lung Association President, Cec McFadden states, "Lung diseases extract a staggering sum from the Canadian economy.

LaMarsh who died Oct. 27 of cancer.

The cancer campaign flag is now flying.

In addition to medical research, the Lung Association supports smoking withdrawal clinics, asthma day camps, seminars for health professionals, health education in schools and the social service assistance.

The Halton Lung

Association will sponsor a smoking withdrawal clinic today at Milton District Hospital from 7.30 p.m. to 9.30 p.m.

Jan. 31, 1981 will mark the end of the 1980 Christmas Seal campaign.

Donations should be sent to the Toronto Dominion Bank, Lakeshore and Trafalgar Rd., Oakville.

Receipts will be provided upon request.

## Moves up ladder

Halton Regional Police Staff Sergeant Roy Wilkinson has moved up the ladder to the rank of Inspector, effective this week.

A member of the force for the past 20 years, the Oakville officer has served most of his career in Oakville, although he did serve three years in Georgetown from 1974 to 1977.

## Meals on Wheels appeals for help

A new co-ordinator for the Milton Meals on Wheels program is desperately needed, or the program which provides hot dinners to Milton seniors will cease to function.

Alex McNiven, retired OPP officer, has been running the program for the past five years but he said he now wants to cease what was supposed to only be a part-time job to concentrate on enjoying his retirement.

Mr. McNiven said the program has been exceptionally successful and has operated in the black the past five years on a profit margin of only two cents on each meal delivered.

He had decided to come forward only to help a bit. Slowly but surely, he had to take more and more control as others dropped out until today he runs the program, orders the meals, contacts the 30 volunteer drivers, and sets the delivery schedules.

But he now wants to take up full retirement and he implored Milton Council to do its best to find a replacement by the middle of November when he plans to head south.

Mr. McNiven said he

has been asking for someone to come forward, "but so far there have been no takers."

He said he does not want to see the program fail, because so many people depend on it, but he has made his own plans and feels justified in wanting to enjoy his retirement after five years of Meals on Wheels work.

Councillors decided to have town staff appoint an interim co-ordinator so that person can learn

Mr. McNiven's scheduling formula and then advise for someone to take over the job.

But anyone who would like to come forward from the public is being urged to do so. Anyone interested should contact Milton Clerk Roy Main.



## A new industry planned

Lou Nadalin, left, has announced he will build a food service industry in Milton which will employ up to 1,000 people. He said he was convinced to set up the industry in Milton by Mayor candidate Gord Krantz, right. Also at the meeting was Ward Two regional candidate Gus Goutouski.

## Rockwell

(Continued from Page One)

increase over the three year period.

The agreement takes effect on the date of ratification.

The cost of living allowance is better than previously offered, said Mr. Farrell, but future increases will not rise as much under a new formula as it would have under old procedures, he added.

The reduced plant will mean the end of a full-time company paid union chairman, said Mr. Dolson.

Bill Zilio, local union chairman, will have to be assigned to a job in the plant.

Union committee men, previously called in when a certain number of workers were required for overtime, will also be assigned specific job tasks under the new agreement.

"I am glad the strike is over, but I am not happy," said Mr. Farrell.

"I still feel they (the company) could have come up with an agreement closer to pattern."

He said many of the workers who have been laid off voted in favor of the contract, believing it will be easier to receive unemployment and supplementary income benefits.

"At least we didn't go crawling back to the company," said Mr. Farrell.

"At least if we can keep working, we can give them another fight next time around," said one worker.

It will take at least three weeks to establish a schedule and work force for those returning to the plant, said Mr. Dolson.

He expects to start off the plant with between 15 and 30 men, working up to a full work force of 80 men. A task force of 30 workers will be called in to "clean up" the lead division prior to its closing, he said.

A management staff of 25 will be kept on and there are no plans to recall or hire additional staff, he said.

Mr. Dolson said there are plans to use the rest of the plant for roundbar operations.

He said Milton will likely be bringing in reels of steel components used in the production of coil springs and do all of its own cutting, straightening and grinding.

The extra work is likely to mean employment for a further 20 men by next June or July.

There are no plans to introduce other lines in the plant.

Despite the animosity between the two sides, Mr. Dolson is optimistic the plant can get down to business and put the strike experience behind.

"Both parties have been hurt but I believe both sides are strong enough to forget the past and look forward to the future."

"We lost 54 good salaried people," he went on.

"The cost of hospital treatment alone is estimated at more than \$400 million annually.

"Payments to physicians, the cost of drugs and other related charges are estimated to total another \$100 million," he said.

Halton Lung Association flag raising ceremony at town hall Thursday morning was delayed as the Canadian flag flew at half mast in respect of the late Judy

**TIME TO WINTERIZE YOUR HOME!**  
Now or Replacement  
Window Specialists

BUY WISE

**WINDOWS and DOORS**

FACTORY WAREHOUSE OUTLET SHOWROOM HOURS  
Mon. to Thurs. 9-6  
Fri. 9-9 Sat. 9-5

Hwy No 7 (south side)  
GEORGETOWN (east side)  
334 GUELPH St E  
Phone 877-1186  
Del d'Entremont  
Manager

**Aluminum Storm Windows**  
2-TRACK STORMS WITH SCREEN  
as low as... **\$25<sup>95</sup>** EA.  
White or Brown Also Available

**Aluminum Storm Doors**  
SELF STORING STORM/SCREEN  
Prehung in Frame Hardware Included Natural Finish  
**\$39<sup>88</sup>** EA.  
WHITE, BROWN & BLACK IN OTHER STYLES ALSO AVAILABLE

... See us for ALUM. PATIO STORM DOORS  
WHITE OR BROWN

**FREE MEASURING GUIDE DO IT YOURSELF BRING IN YOUR SIZES ... WE ALSO INSTALL**

**VINYL SLIDER WINDOWS**  
Double Glazed with Screen Many Sizes AS LOW AS **\$59.**

**BARGAIN BIN UNCLAIMED WOOD PATIO DOORS**  
2 ONLY **\$295.**  
5' Size Reg. \$369

**UNCLAIMED PICTURE WINDOWS**  
3 Section Casement... 1 only  
- insulglazed with grilles - opening approx. 65%  
w x 66" h - list \$528 **\$264.**

Colonial Flat... double glazed with grilles - opening approx. 91 1/2" w x 62 1/2" h - list \$520 **\$260.**

3 Section - check rail style - insulglazed - opening approx. 101 1/2" w x 65" h - list \$400 **\$200.**

DOZENS OF OTHER UNCLAIMED SIZES AND TYPES... HURRY!

... SEE US for ENERGY SAVING Window Quilt™ on display at BUY WISE.

Friendly Help and Advice... Installation Available... Window Specialists... New or Replacement... SEE US for Wood Windows, Picture Windows, Entrance Doors, Lock Sets and Weatherstripping

THE PLACE TO SAVE!!

SPECIAL PRICES ON HOUSE LOT QUANTITIES

**YMCA DAY CARE Nursery School & Children's Centre**

OPENING JANUARY 1981

Location: White Oaks Plaza  
Bronte St., Milton, Ont.

Program:

- Full Day Care
- Flexible, Part-Time Care
- Kindergarten Child Care (with pick-up to and from school)
- Nursery School
- Recreational & Interest Courses

REGISTRATIONS Now Being Taken

Call **878-8711**

## "ATLAS SNOW TIRES" ON SALE

AT UNBELIEVEABLY LOW PRICES

**Esso**

COMPARE OUR PRICES

**Esso**

<p><b>E78-14</b> Reg. \$49<sup>75</sup> <b>\$40<sup>80</sup></b></p>	<p><b>MK II BELTED TIRES</b></p>	<p><b>G78-15</b> Reg. \$57<sup>20</sup> <b>\$46<sup>75</sup></b></p>
<p><b>P195/75R14 (E78-14)</b> Reg. \$67<sup>60</sup> <b>\$53<sup>70</sup></b></p>	<p><b>MK IV ALL TRAC RADIAL</b></p>	<p><b>P215/75R15 (GR78-15)</b> Reg. \$73<sup>35</sup> <b>\$59<sup>40</sup></b></p>
<p><b>P195/75R14 (E78-14)</b> Reg. \$81<sup>90</sup> <b>\$64<sup>55</sup></b></p>	<p><b>OUR BEST MK V STEEL RADIAL</b></p>	<p><b>P215/75R15 (GR78-15)</b> Reg. \$91<sup>10</sup> <b>\$72<sup>40</sup></b></p>

Similar Savings on all lines and sizes of Atlas Winter Passenger Tires. While Supplies Last.

Regular prices/savings quoted above are based on Atlas suggested retail prices. Some Atlas savings may have sold these lines for more or less than these prices prior to this sale.

Sale starts Nov. 5/80 to Nov. 8/80

## BONIN'S ESSO

878-3085
CORNER OF MAIN & BRONTE
878-8008