

Novelty clocks keep company 'ticking'

By Jane Muller
There is no face more familiar than that of a clock. For practical purposes like keeping appointments and adhering to time schedules, we can't live without them, but practicality is not the only reason for buying a clock.

Local clock makers Mark Bradley and Joseph Cassidy, owners of Montgomery Clocks have discovered a new breed of clock buyers, those interested in specialty or novelty clocks.

Organizations, clubs and businesses are likely customers for specialty clocks which illustrate a group logo or commemorate an event.

The pair produced 200 commemorative clocks for the 79th annual Fire Fighters of Ontario Convention held in Milton in August with a selling price of \$20. The idea caught on.

"Most people are thrilled with the (specialty clock) idea when they first hear of it," admits Mr. Cassidy.

Clubs such as the MGB Car Club and the Royal Canadian Escaping Society (pilots who escaped during WW II after being shot down behind enemy lines) have also taken advantage of this unique form of memorabilia.

A local real estate company had a clock specially designed by Bradley and Cassidy to place in its various offices.

They have also created a wall clock for Fifth Wheel Truck Stops chain which is available at each of the firm's five Ontario locations.

After one year in business, the pair have found success in not only specialty clocks—their hand-made wooden clock cases in various styles have also proven popular.

Cassidy and Bradley take particular pride in their selection of grandfather clocks which sell for about \$700 and are offered at a \$200 saving if purchased in kit form.

For the past year Montgomery Clocks has been located on Thompson Rd. where the "partners in time" both produced and retailed clocks. The original clock designs will soon be available at a more convenient location on Martin St. just off Main St., in newly renovated Clements Block.

Production will continue at the Thompson Rd. location however, until the pair construct a workshop of their own.

November parades approved

Halton Council has approved the use of regional roads to conduct parades in Milton and Halton Hills.

Main St. and Maple Ave. in Georgetown will be closed Nov. 22 for the annual Santa Claus parade. In Milton, Main St. will be closed Nov. 15 for the Milton Santa

Claus parade 1980. Main St. in Milton will also be closed Nov. 9 for the annual Remembrance Day Parade by Legion Branch 136.



Sincerely,
Mary F. Johnson,
5470 Tremaine Rd.,
R.R. 1, Milton.

*"The Best Man Today
For A Better Tomorrow"*

**Vote
KRANTZ
FOR
MAYOR**

With KRANTZ AS MAYOR . . . "It's like being there yourself"



POLICE
The level of police protection in both rural and urban Milton is not adequate. Krantz will work hard to improve this vital community service.



CONSERVATION
We must protect our environment, Krantz has done his share by serving on the Halton Region Conservation Authority for 8 years and is currently vice-chairman of the authority.



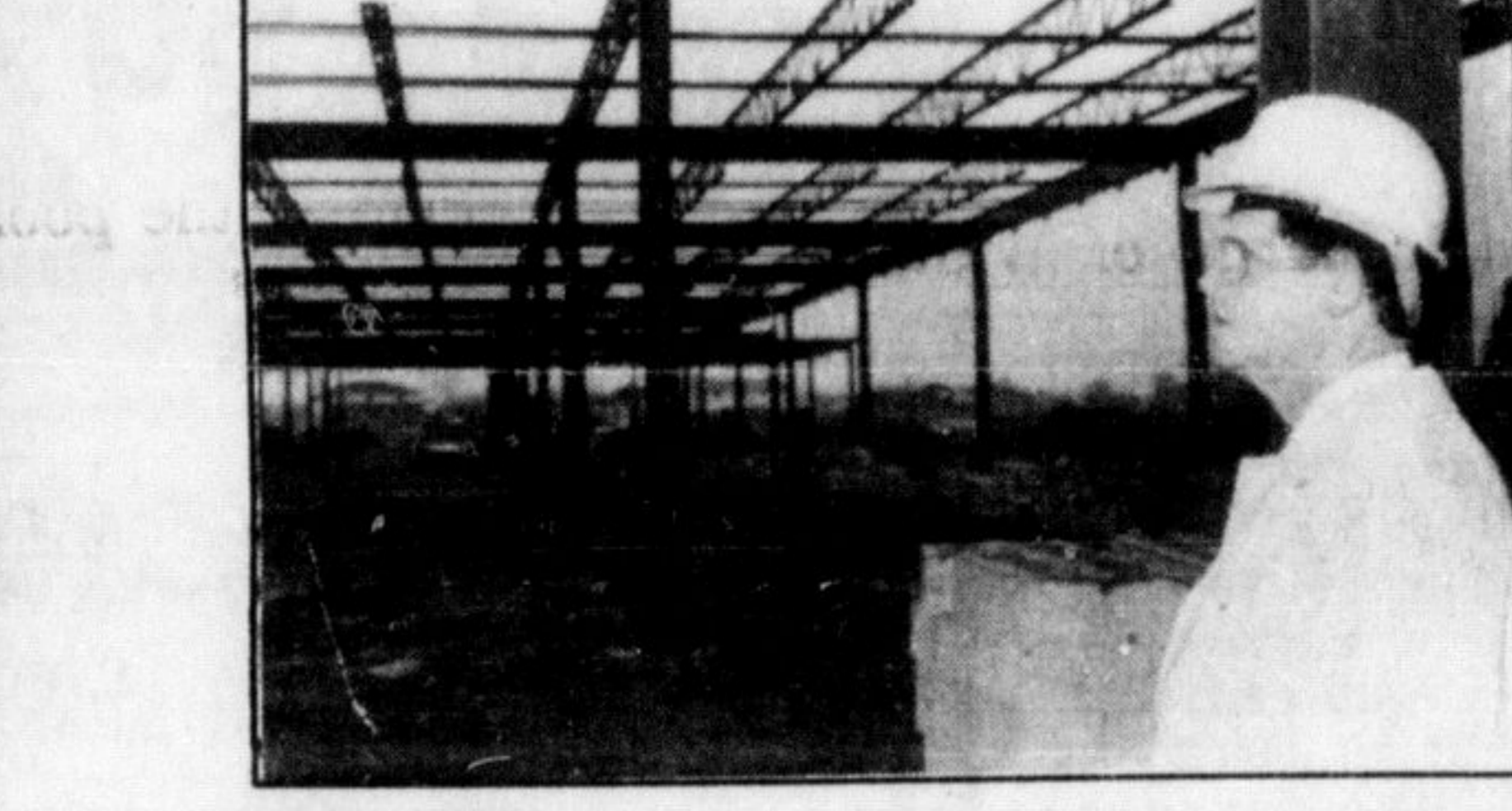
YOUTH
Milton's young people of today represent our leaders of tomorrow. It is imperative that Milton's leisure programs are designed to meet the recreational needs of all interested groups of all ages.



SENIOR CITIZENS
Our senior people are the town's quietest, natural resource. We must support programs to improve their lifestyle and ease the costly property tax burden for those on fixed incomes.



LIFESTYLE
Careful long term planning is essential. Land uses must be compatible with existing future development so as to protect our quality of life.



INDUSTRY
Our industrial plaza north of 401, must be given high priority so as to support jobs for local citizens and ease the tax burden on our resident home-owners.

Letter

More on Site F

To the Editor:
Two weeks ago, The Canadian Champion published an article on Site "F", in that article many aspects and comments on the landfill site were brought out, although none by the Tremaine-Britannia Citizens' Group. As a member of that group, there are two items which were overlooked and to which I would draw your attention.

The first is the overall costs associated with Site "F". The Region would have to purchase the land (approximately 300 acres), develop these lands with berms, fences, scales, etc., and upgrade all the roads leading to the garbage dump. These estimated costs are in the neighborhood of \$5,000,000. The Region would be well advised to save these monies and expand the present landfill site, Site "A" in Burlington. No costs are associated with expansion since national Sewer Pipe is in the process of obtaining a certificate of approval for garbage disposal and these lands are adjacent to the present landfill site. The dumping fee would be the same in either Site "A" or Site "F"

and the end result would be a saving of approximately \$5,000,000.

The second issue revolves around the Region's fear of having the new Environmental Assessment Act used on Site "F".

The Region is aware that not only have they not been thorough in researching alternatives to the site, they would have extreme difficulty in proving there is little or no social impact by the implementation of a garbage dump at the corner of Tremaine and Britannia Roads.

Both of these topics, social impact and alternatives must be addressed if the upcoming hearing is heard under the new Environmental Assessment Act.

I wonder when or if the Region will be listening. We can help, if they'll let us. Let's start with NO MORE SITE "F".

GALLINGER MOTORS LIMITED
655 MAIN ST. E. (AT WILSON) MILTON 878 2883

★ Lynx
★ Cougar XR-7
★ Marquis
★ Bobcats
★ Zephyrs
★ Capris
★ Monarchs

Mon-Thurs. 8 a.m.-5 p.m.
Fri. 8 a.m.-6 p.m.
Sat. 9 a.m.-5 p.m.



655 Main St. E. (at Wilson)
For a Day! a Week! a Month! a Year!
Drop in and Check Our Economy Rates
★ SPECIAL WEEKEND RATES ★

★ F-150 Pick-ups
★ Econoline
★ Window Vans & 8 Passenger Club Wagons
★ E-350 14' Van
★ LN-700 16' & 20' Van with automatic trans. & tailgate loader

Streetsville 876 1324

FABRICLAND
CANADA'S LARGEST FASHION FABRIC DISTRIBUTOR

BIRTHDAY CELEBRATION SALE

Thinking Of Crafts, Upholstery Or Drapery . . . Think Fabricland

Sparkle Jersey 60" wide, full fashion colours AT FABRICLAND ONLY \$2.98 yd.	Eyeloil 45" wide, washable, white & colours AT FABRICLAND ONLY \$4.98 yd.	Sparkle Shirting 45" wide, washable AT FABRICLAND ONLY \$2.49 yd.	Assorted Gabardines 60" wide, washable, selected colours AT FABRICLAND ONLY \$2.98 yd.	Tropical Suiting 36" wide, wash & wear Solids & Checks AT FABRICLAND ONLY \$1.98 yd.
Calico Prt. 45" wide, washable, assorted colours AT FABRICLAND ONLY \$2.98 yd.	Corduroy 45" wide, washable, assorted & colours AT FABRICLAND ONLY \$3.49 yd.	Lacy Tablecloth 60" wide, washable, White ivory and colours AT FABRICLAND ONLY \$4.98 from	Velour 60" wide, machine washable, solid stripes & textures AT FABRICLAND ONLY \$7.98 yd.	Brushed Denim 45" wide, washable, assorted colours AT FABRICLAND ONLY \$2.98 yd.
Fan Fur 54" wide, "The Toy" colors AT FABRICLAND ONLY \$4.98 yd.	Velvet Upholstery 54" wide, Solid colors & designs AT FABRICLAND ONLY \$6.98 yd.	Batiste 45" wide, washable, solids & patterns AT FABRICLAND ONLY \$1.98 yd.	Felts 72" wide, short ends, various colours AT FABRICLAND ONLY \$2.00 yd.	Lacey Place Mats 12" x 18" white & candlelight AT FABRICLAND ONLY \$1.99 each
Printed Sheeting 66" wide, washable AT FABRICLAND ONLY \$3.98 yd.	Christmas Trims Washproof AT FABRICLAND ONLY \$1.59 roll	Lace Assorted designs & styles AT FABRICLAND ONLY 99c 3 yds.	Buttons Carved buttons AT FABRICLAND ONLY 10 CARDS FOR 99c	Polyester Stuffing 1 lb. bag, washable AT FABRICLAND ONLY \$2.69 bag

188' CLARENCE STREET
456-1933
Hours: Daily 9:30-3:30
Sat. 9:30-3:30

PANELLING IDEAS

CANFOR PANELLING HEADQUARTERS

Check these GREAT BUYS!

WE have a selection of 29 4 x 8 panels to choose from. Rosewood, Birch, Cedar, Walnut and many more so come on in and let us assist you in choosing the right panel for your decor.

FEATURE PANEL SCOTIA PINE \$6.95

EXECUTIVE WALNUT CABIN PLANK GREY \$17.95

GRAND ELM \$11.95
SOUTHERN ELM
Regular Value \$16.50

NORWOOD DECORATOR 'WAINSCOT' PANELING
The new decorating trend is to half-wall wainscotting!

It's easy to do-it-yourself with these rustic 5/8" thick burnished pine planks and matching cap moulding!

TAKE-HOME KIT PANELS 6 LIN. FT. APPROX. 40" HIGH. INSTRUCTIONS INCLUDED
ONLY \$33.95

PRE-FINISHED! READY-TO-INSTALL

FINISH OFF WITH MOULDING
Add the final touch with wood or vinyl moulding. Pre-finished, ready to use.

VINYL \$1.09
WOOD \$1.30

castle building centre
COPELAND LUMBER
700 Main St. E. MILTON, ONT.
Just East of the Milton Mall
878-8171

STORE HOURS
Mon. to Thurs. 8 a.m. - 6 p.m.
Friday 8 a.m. - 9 p.m.
Saturday 8 a.m. - 6 p.m.

MasterCard
VISA
CHARGE IT!

QUALITY PRODUCTS QUALIFIED SERVICE COMPETITIVE PRICING FREE DELIVERY