



A surprise for an anniversary: William "Doc" Wright and wife Jean were honored Saturday for their service to the community and the church at a special ceremony in Holy Rosary Hall. As a surprise, they were also presented with a cake to mark their 38th wedding anniversary.

'Doc' Wright, Jean honored for service

A night of fun and light kidding brightened a serious occasion as William "Doc" Wright was honored for the years of service to the community and church he has given Milton.

Dr. Wright and his wife Jean, were the guests of honor Saturday evening in the Holy Rosary Roman Catholic Church Hall as friends and family feted the Wrights.

Not only was his glowing past of accomplishments made a major part of the evening, but the Wrights were surprised by 38th wedding anniversary cake specially prepared for the evening.

The 60 members of the party were told how William Wright was born in Toronto in 1920, attending Winchester Public School, Jarvis Collegiate,

and Central Technical School before becoming a chef in 1939 and holding that job until he entered the Canadian Army in 1942.

He met and married Jean in 1938 and they have been blessed with six daughters over the years.

After leaving the SDG Highlanders in 1949, Mr. Wright decided he had better do something important with his life and he enrolled in dental school. He started study in 1946 and graduated in 1951 as a Doctor of Dental Surgery.

That same year he and his young family went to live in Alberta, where he started to become interested in serving the community and church there by joining the Knights of Columbus.

From that point on, both in Alberta and Milton, his list of accomplishments is almost endless. He has served in many posts in the Knights of Columbus and currently is the Past Grand Night in Milton.

In 1966, after establishing himself in Milton, he went back to university and upgraded his abilities to the point he is now in charge of dental programs for the municipalities of Wellington, Dufferin, Simcoe, Grey and Bruce.

On the Milton front he has organized seminars and social activities including the very popular Holy Rosary breakfast.

For the Wrights it was a night to remember, and for Milton a man and his family to honor.

Staff 'failure' costs...

Continued from Page One

This amount formed part of the \$600,000 deficit recently uncovered because of problems in the regional treasury department.

Stewart explained that when there are extra interest charges of this type they form part of the actual budget for that year and affect the final surplus or deficit position of the region at the end of the year.

Bob Moore, Director of Public Works for the region, denied however that his department was responsible for the foul up, saying that his responsibility is only to prepare part of the special assessment roll and to ensure that construction work is carried out to the region's standards.

He also said his staff co-ordinates the preparation of the assessment rolls, with the assistance of the area municipalities.

"I admit that the rolls weren't prepared as quickly as we would have liked," he said in an interview, adding that that particular function is part of the job description of one staff member "and that position has turned over three times in the last year."

Moore said the region does have a policy manual stating the fashion in which such projects are to be handled "but you come away from reading that not too sure just who's supposed to co-ordinate the thing."

"What we need is somebody to quarterback these projects through the region," he added. "The policy just needs a little better definition."

Garfield Brown, regional clerk, said the estimate of

\$186,000 in extra interest charge was "probably a conservative amount."

"We can't say what the final amount will be until we see what the money market is like when we make the bond issue," he added.

Brown said he did not think the problem was one of a lack of co-ordination. "I think it has happened because one party around here has been dragging his feet."

"There has been such a high turnover in that particular department that before we can hold a court on a project, the person responsible is on his way," Brown said.

"I don't think the treasurer or my department should be taking any of the blame for this at all," he added, agreeing with Mr. Anderson's statement about the breakdown in public works.

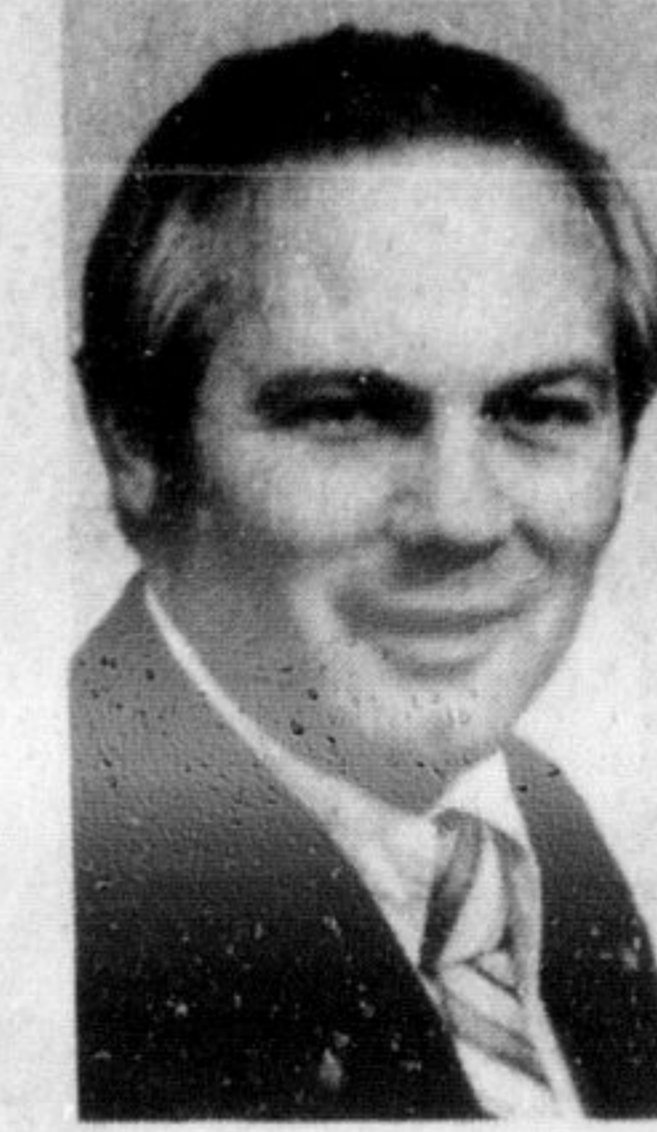
"Mac is right about that," he said. "I'll back him up completely on that."

ANNOUNCING
DR. R.N. STROHAN
OPTOMETRIST
OPENING HIS PRACTICE
AT
143 MAIN ST. E.
MILTON, ONTARIO

OFFICE 878-5862
HOME 878-5165

OFFICE HOURS:
WED, THURS. 9 a.m.-5 p.m.
FRI. 2 p.m.-9 p.m.
SAT. 9 a.m.-5 p.m.
OTHER HOURS BY APPOINTMENT

RE-ELECT
W.C. (BILL) ROWNEY



TO ALL URBAN
RATEPAYERS
IN THE
TOWN OF MILTON

AN IMPORTANT MESSAGE

Our municipality is now progressing through another election. This is a time when everyone, new or old, should take stock of our town, and of those who serve the town on your behalf.

After spending seven years on Milton Council, I realize people neglect to vote.

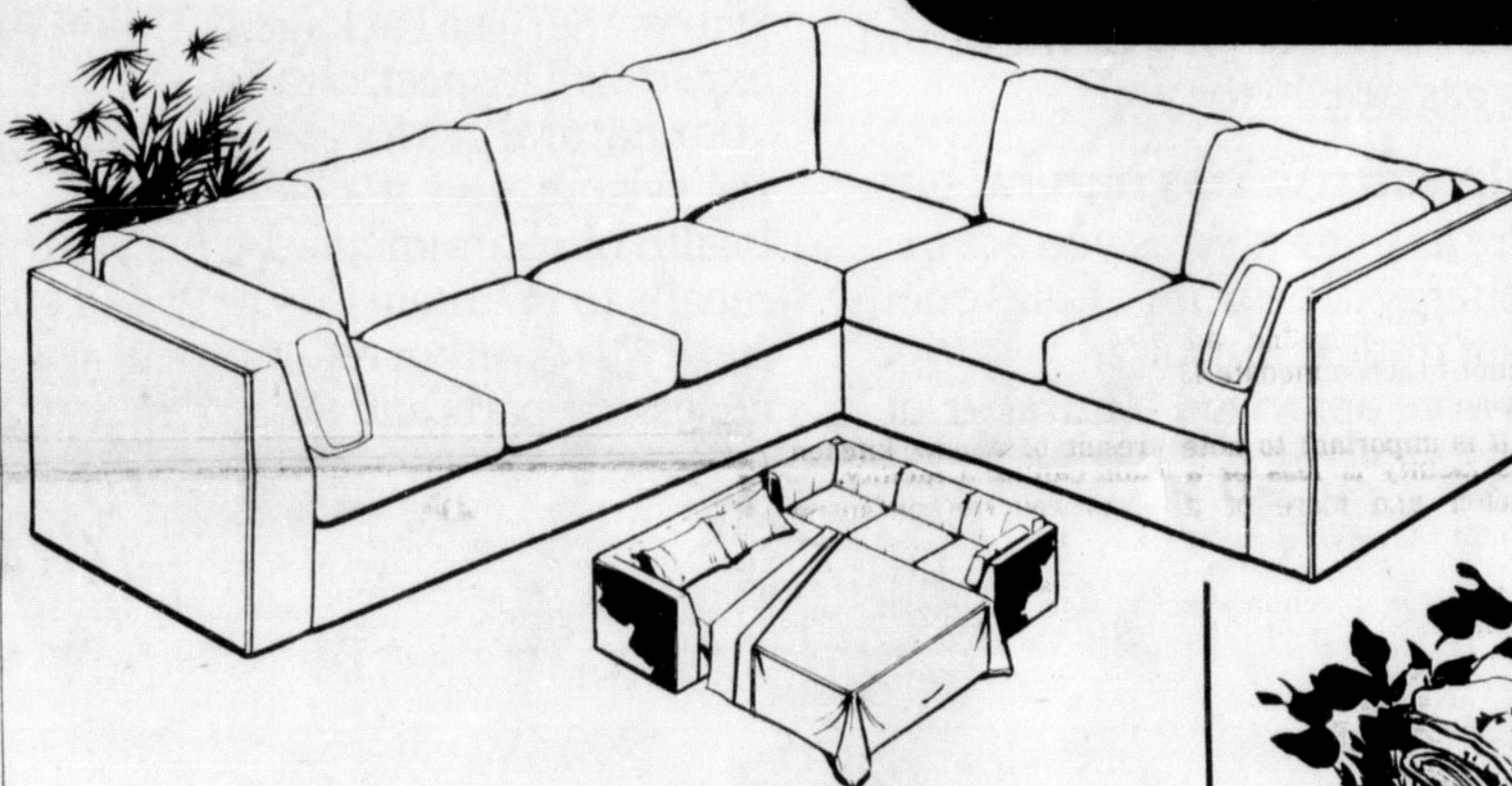
- 1 - Make sure you vote.
- 2 - Make sure your vote counts.
- 3 - Make sure you phone Brad Clements, 878-6576, for any information and assistance you require.

Sincerely,

Brad Clements

Brad Clements - Candidate for Regional Councillor in Ward Two, Milton

Leon's Fall SAVINGS



14 ft. sectional with queen size sleeper

What a marvellous value... all the seating space you need plus a big comfortable place to sleep two people. ALL AT ONE LOW PRICE. Handsome tuxedo styling with super comfortable lounging... fibre wrapped reversible foam cushions and reversible back cushions. Fawn beige cotton. Queen size spring-filled mattress inside loveseat section opens into a spacious bed.

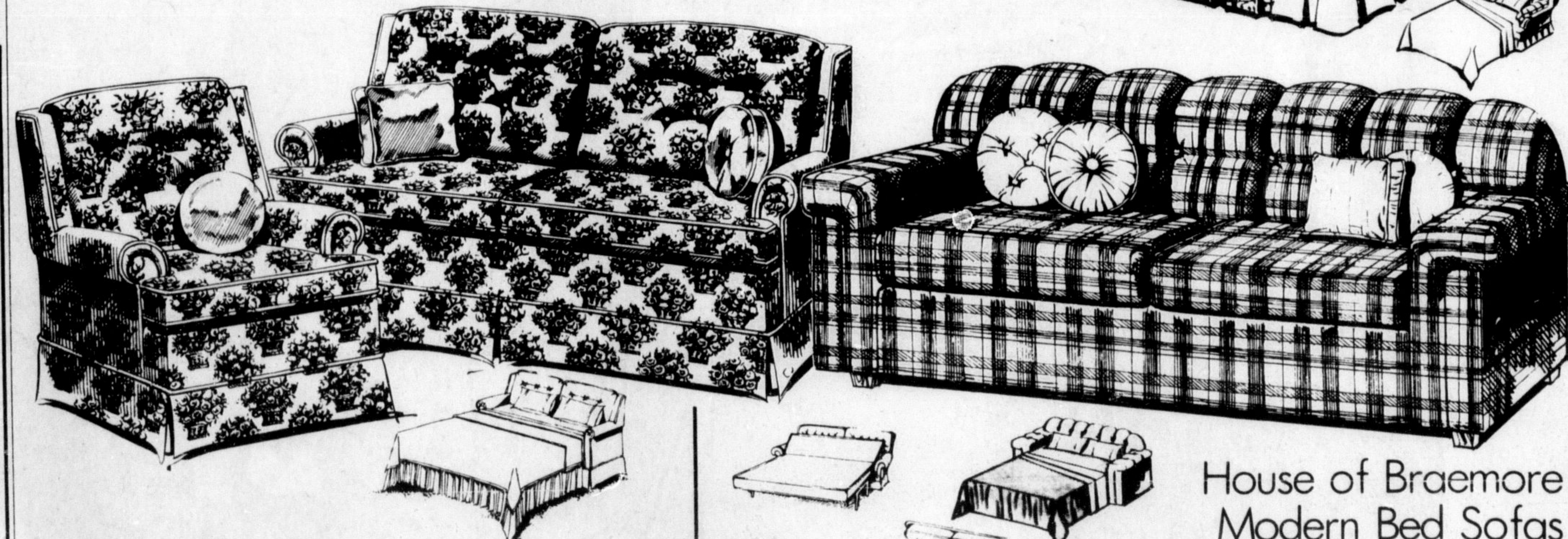
\$795³⁷



SEALY "Elmont" colonial bed sofas

Rich nylon floral print cover in brown tones. Maple finished wood trim. Enclosed Sealy POSTUREPEDIC mattress makes into a double bed. Reversible foam seat cushions. Deeply foam padded high back and pillow arms. For comfort and quality choose SEALY.

\$497⁴²



Sklar-Peppler Traditional bed sofa

Beautiful nylon floral print with welt trim • Spring filled mattress inside sofa makes into a double bed • Reversible foam seat cushions • TV adjustable headrest • Arm caps and covered seat decks • Matching chair available.

\$498⁴⁰

Back locks at perfect angle for TV viewing

Sofa bed tilts forward for easy cleaning

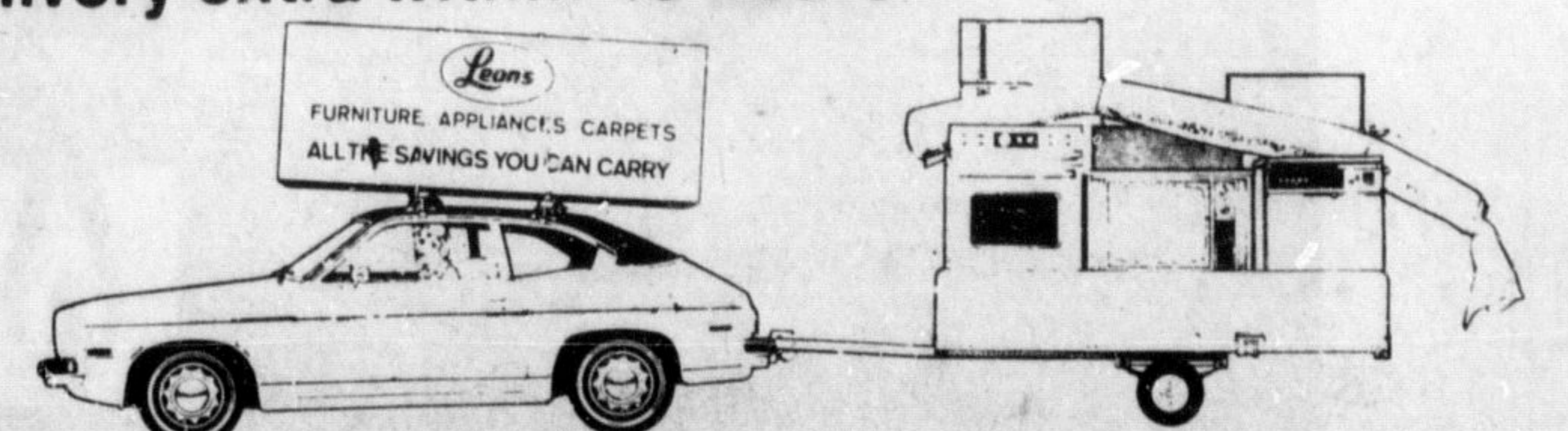
House of Braemore Modern Bed Sofas

This beautiful sofa quickly converts into a comfortable bed for 2 adults... allowing you to add an extra bedroom to your home in seconds. Enclosed foam mattress for greater comfort and restful sleep. Long wearing plaid olefin cover. Biscuit tufted back, foam padded. 5-inch foam reversible seat cushions.

\$296²⁰

On-the-spot-pick-up, delivery extra within 48 hours.

North Service Road Burlington
Q.E.W. & Guelph Line interchange
OPEN DAILY 9 A.M. TO 6 P.M.
THURS. & FRI. TO 9 P.M.
3 1/2 Million C. Ft. Furniture - Appliance Warehouse and Showrooms



3 1/2 Million c. ft. Furniture — Appliance Warehouse and Showrooms

Drivers not injured in multi-car crash

A minor miracle occurred last Thursday when several drivers managed to escape serious injury in a multi-car pile-up on Highway 401 that included a 50-ton bulldozer.

The accident happened at 1.30 p.m. near Kelso when a car driven by Axel Tromm of Puslinch

was sideswiped by a vehicle driven by Olive Sargent of 8 Mercer St., Guelph, said Milton OPP.

The Sargent car then veered out of control in front of a tractor-trailer carrying a 50-ton bulldozer.

This caused the bulldozer to roll off the

tractor-trailer onto its side in the median.

No serious injury was incurred but total property damage was estimated at \$25,000.

Extensive wreckage on the highway kept traffic stop-and-go for two hours as crews worked to remove all the debris.

1/3* OFF ALL ST CLAIR ULTIMATE INTERIOR PAINT

It's our very best and it's on sale at one-third off!

St Clair paint can be tinted to over 1,000 decorator colours while you wait. We tint free of charge and our paint is 100% guaranteed!

*ultimate gallons only



St Clair

The paint and paper people

MILTON MALL
878-2629 MILTON

EASY PARKING

Open Mon.-Fri. 10 a.m.-9:30 p.m. Sat. 9:30 a.m.-6 p.m.

Final 4 Days
Sale Ends
October 25, 1980

