

Model T for two. A couple of crazy Hillbillies entertained crowds at the Steam-Era show, with the help of their dilapidated Model T which seems to have a mind of its own. The mud-covered machine would chug to a start without a Hillbilly hand near the automobile, and squirt water from its radiator without notice.

20th anniversary

Makes show movie

Steam-Era directors celebrated the 20th anniversary of their show, by engaging one of the club members to make a movie of the event.

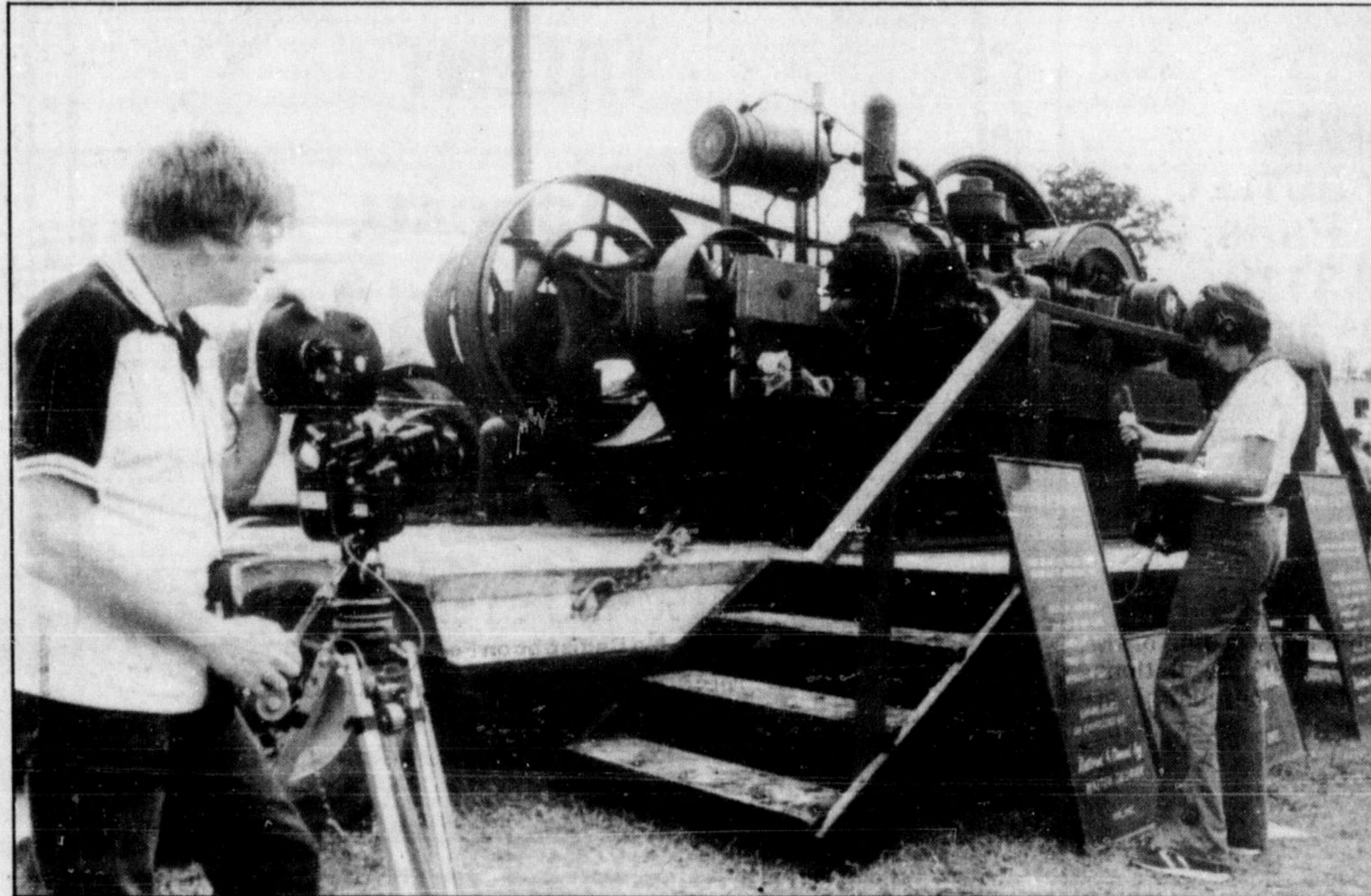
Sandy Thomson of Burlington, a steam yacht enthusiast and part

time movie-maker, was enlisted to do the job. He shot a 16 mm full color movie, with sound effects and background music, and hopes to have it ready to show sometime in October or November.

"I did a movie for the club for the 10th anniversary show, and they liked it. Now it's the 20th anniversary, it's time to do another, as many of the old faces are missing," he said.

The movie will be available to TV stations too. Sandy and his sound person Mary Kuska also interviewed several of the older club members during the filming, and got their recollections down for posterity.

The movie will be available to TV stations too.



Movie makers. Sandy Thomson and Mary Kuska film and record a big diesel engine at Steam-Era. They are making a movie in honor of the club's 20th anniversary and hope to have it ready later this fall.

Extra help

Regional Treasurer Jim Stewart has asked for part-time help until Jan. 31 in preparing fiscal statements and reports.

The Region has used the services of a third-year commerce student from McMaster University and the student will probably be kept on.

Mr. Stewart said the need is to "assist with the analysis and assembly of reports concerning expenditures to date and projections of both revenues and expenditure through the year end."



"OVER 30 YEARS EXPERIENCE"

STOCKS & BONDS

GEORGE E.C. JACKSON

DAVIDSON PARTNERS LIMITED (INVESTMENT DEALERS)

827-7090

or

827-7092

Res. 878-2580

THE GIANT FURNITURE TENT IS COMING! SEPT. 10

Hillbillies add fun

They are on the road from April to October bringing hillbilly-style comedy to county fairs, steam shows and state fairs with their unpredictable, dilapidated Model T Ford.

Carl Hayes and E.J. Rowe of Ashland, Kentucky have made the Steam-Era show at Milton one of their stops since the 1960s. It is the only show they attend in Canada. Most of their performances take place through-out the United States, including their next stop at Indianapolis.

The Model T is made up of original parts complete with a bird's nest on the engine head and years of mud plastered over the car. The Ford appears to have a mind of its own. Without apparent warning it will chug to life or squirt water from its radiator, which is sealed by nothing less than a dried out corn cob.

They claim that with

two hours and a sledge hammer, any car can be "restored" to the shape of their Model T—which is the best antique car the two own.

Derry Fifth Line study

A joint Milton-Halton Regional report is being prepared on the best methods of stopping auto accidents at the Derry Rd.-Fifth Line intersection.

Councillor Bill Johnson asked Public Works Committee to move quickly to stop the carnage at the intersection, which has seen three fatalities in the past three years.

Public Works Director Bob Moore said he has already talked with Milton Public Works Director Joe Pituschka and a

report is expected soon. Derry Rd. is regional and Fifth Line is municipally controlled.

Mr. Johnson said there are stop signs in existence on Fifth Line but he said people sometimes just don't see the signs.

After being told by Councillor Mike Armstrong that the installation of a light at a death corner in Halton Hills had proved successful, Mr. Johnson said he also wanted to see something about lighting in the report.

- Lumber
- Plywood
- Plumbing
- Electrical
- Hardware
- AND MORE!

CASHWAY

HELPING YOU BUILD...SAVING YOU MONEY!

"Storall"

'Cabin' Model Metal Storage Shed

160 Cu. Ft. Capacity!
Interior Dimensions Are 72"x54" And Peak Height Is 7'7"

A handy size shed for House or Cottage. STORALL'S unique system of interlocking metal panels helps to make assembly fast and easy.

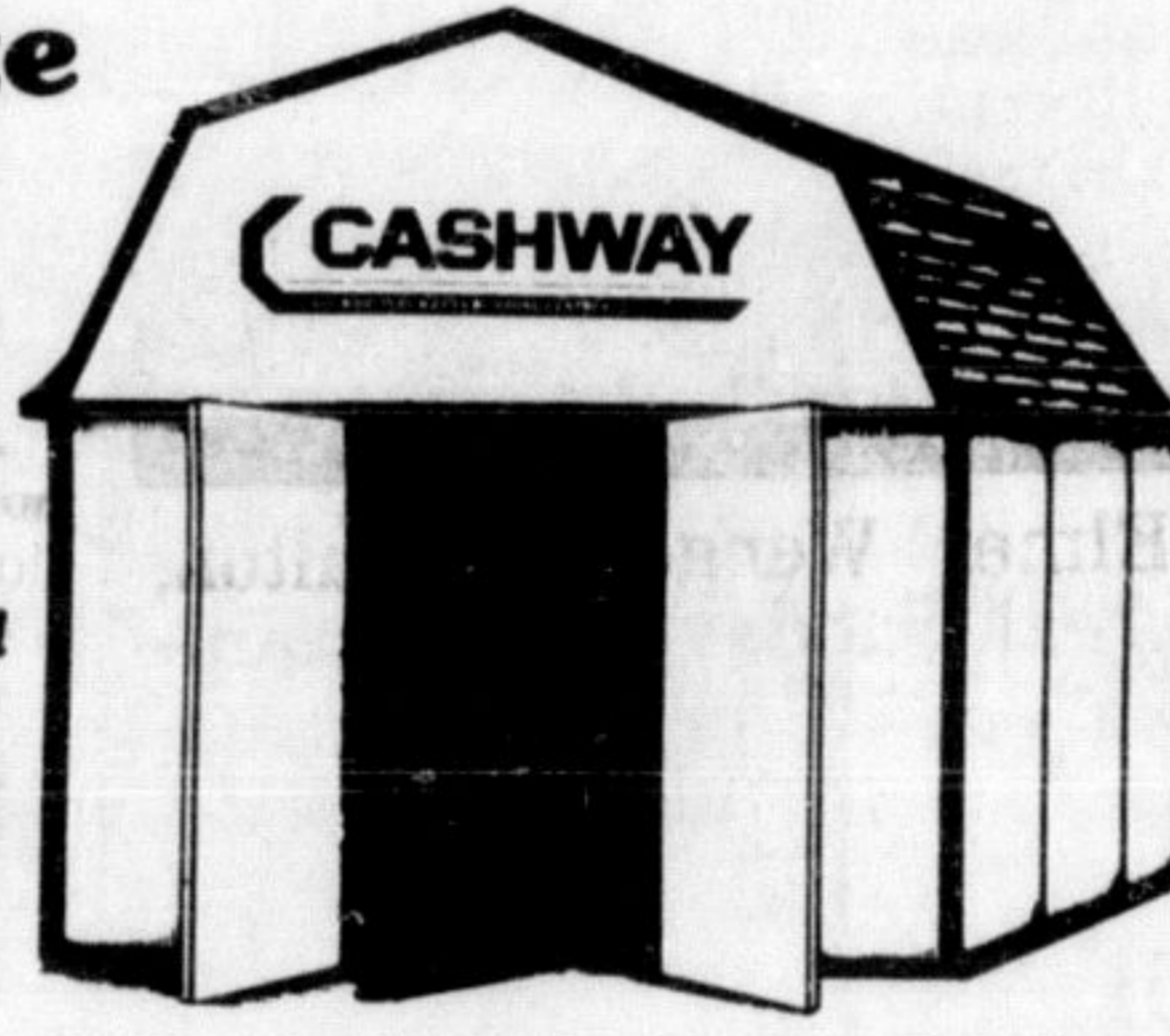


99⁰⁰

12'x12' Size Baby Barn

Peak Height Of 8'9"

369⁹⁵

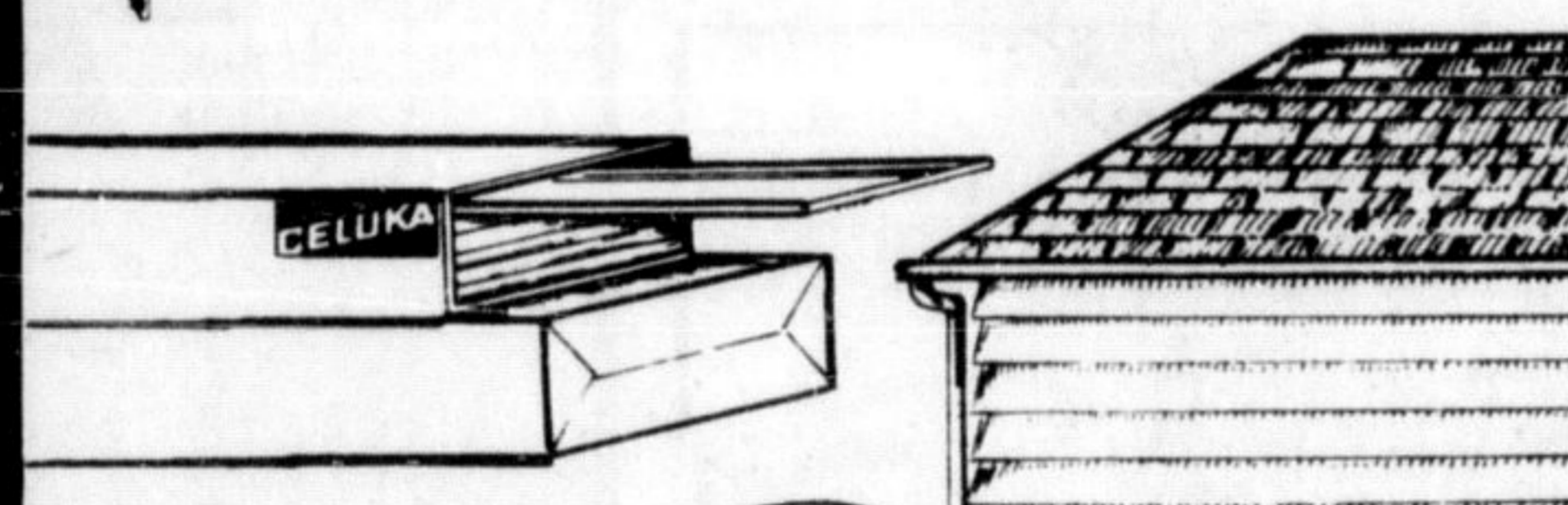


Loads Of Storage Room! A Great Project For You!
Our price is for all materials (not pre-cut) plus a set of Detailed Working Drawings, and includes No. 2 & Better Spruce, Self-Seal Shingles in your choice of stock colours as available...and even the Nails.

20"x16" Vanity With Top

Our Reg. \$59.95 **53⁹⁷**

The White cabinet is knocked down and ready to assemble. The Cultured Marble Top has an integral Soap Dish. Faucet is not included.



"Celuka" Siding

The Siding That Insulates To Help Cut Fuel Costs!
White With Cellular PVC Foam Interior. Save Now!

Easy to install because it cuts, saws and nails just like wood but won't split when nailed. Each piece is approx. 3/8" thick, 9" wide and 12 feet long with a smooth scratch-and-dent resistant surface. Save on cartons of 88 Square Feet!

Reg. \$88.00 **73⁹⁵** carton

Kitchen Cabinet Floor Model Clearance!

ALSO VANITY CABINETS

Applies to all "Peterborough Line" Display And Floor Model Kitchen Cabinets and Vanity Cabinets. Choices As Available so please check locally!

25% OFF
The Regular Price

ALL PRICES EFFECTIVE UNTIL 6 P.M. TUESDAY SEPTEMBER 9th-SHOP AND SAVE!
NOTE: Should Inventories Of Regularly Stocked Items Be Sold Out Due To Unforeseen Demand, Rain Checks Will Be Issued And You Will Be Supplied At The Advertised Price.



"Zonolite" Attic Type Hand-Pouring Insulation

3 CU. FT. BAG (approx. size) **329** bag

Odourless, permanent and non-irritating. Pours and spreads easily to thicken up your existing insulation, and increase your protection.

Foam Insulation In 4'x8' Sheets

Lightweight And Easy To Handle. Two popular thicknesses. Check our low prices.

1/2"	249
Reg. \$2.77	SHEET
3/4"	399
Reg. \$4.16	SHEET

New! "Polycel One" Insulating Foam

Seals, Caulks, Bonds To Protect Your Home!
Insulating Foam you can spray on. Special applicator nozzle for accurate use. Seals gaps, cracks around windows and anywhere cold air can get in...forms a permanent seal!

12 Oz. Can **799** EACH

"CHIP"

Canadian Home Insulation Programme Of The Government of Canada!

"CHIP" IS A PROGRAMME THAT COULD SAVE YOU MONEY ON YOUR INSULATION COSTS!

If you have not previously applied, and should your home qualify for a "CHIP" grant, the following costs could be rebated to you by the Federal Government:

100% Of The Cost Of Your Insulation Materials Up To A Maximum Of \$350.00!

PLUS
1/3 Of The Cost Of Labour Required To Install The Insulation Materials up to A Maximum Of \$150.00!

Cost Of Materials You May Claim Include:
Insulation Including Vapour Barrier, Weatherstripping And Caulking Materials.

Caulking Clearance!

While Stocks Last!
Glidden **25% OFF**
Our Regular Prices

Aluminum Storm Windows

Order Now! We Make Them To Your Measurements In Double Hung Or Horizontal Slider Styles. See Us!
Windows are regular Mill Finish Aluminum and are complete with Fiberglass Screen. Frames are pre-drilled to speed up installation. THE SUM OF ONE WIDTH PLUS ONE HEIGHT ARE REQUIRED TO DETERMINE UNITED INCHES.

UNITED INCHES	DOUBLE HUNG STYLE MILL FINISH	HORIZONTAL SLIDER MILL FINISH
UP TO 38	21.95	24.15
38-1/8 TO 49	23.95	26.39
49-1/8 TO 59	27.59	30.25
59-1/8 TO 74	31.57	34.15
74-1/8 TO 87	35.49	37.65
87-1/8 TO 100	40.59	42.69

ORDER NOW!
Ensure that you have your windows well before the cold days ahead. Allow a minimum of 5 weeks time.
OVER 100 UNITED INCHES PLEASE ADD \$1.00 PER UNITED INCH.
Also Available in White Or Brown Enamel Finish At Extra Cost Per Window.

TREMCLAD



Rust-Resistant Paints

The Special Formula Inhibits Rust On Metal Surfaces Old Or New. Ideal For Bikes, Lawn Furniture, Metal Fences, Machinery, Etc.

Now's the time to make old things look like new again and to touch up metal surfaces before cold weather sets in! Choose from several popular colours. Tremclad Rust Paint can be applied right over sound rust...on most applications primers not needed.

13-OZ. AEROSOL **269** can
Reg. \$2.89
ONE QUART CAN **599** quart
Reg. \$6.39

OPEN WEEKDAYS 8:30 A.M. - 6 P.M., SAT. TO 5 P.M., THURS. & FRI. TO 9 P.M.
(IN SOME AREAS THESE HOURS COULD VARY SLIGHTLY. PLEASE CHECK)

Shop Now with Credit!
CASHWAY, CHARGE, VISA, MASTERCARD

DELIVERY AT REASONABLE RATES.
MATERIALS TRANSFER SERVICE AVAILABLE!

Trucklot Prices Available For Your Big Jobs!
Volume prices available on Dimension Lumber, Plywoods, Steel Roofing, Insulation, etc.

25 STEELES AVE. E. (Just west of Hwy. 25) MILTON 878-8487
Bramalea Rd. (at Steeles) BRAMPTON 792-3111

Cashway Centres Throughout Ontario...There's One Near You!!