



### Flood Threatens Hamlet

ALTHOUGH MILTON was not affected, Halton did see some severe flooding on the weekend. In Glen Williams, near Georgetown, fire fighters took to boats to

remove people from endangered houses. In this photo the House family is being evacuated from the area which has not seen flooding in living memory.

## Escape was short, fast, but not sweet

by Linda Kirby  
A 15-year-old Milton juvenile who escaped from an Oakville youth training home a week ago ended his brief flight of freedom Sunday evening when he was nabbed driving a stolen car by Milton police following a high speed chase through town.

According to Halton Regional Police the chase started shortly after 5:30 p.m. when Constable Steven Amis making a routine police check, spotted the youth parked at 224 Martin St.

The car sped off and Constable Amis took up pursuit. Police said both roof lights and headlamps were activated.

The youth made a fast circuit around Kingsley Cr. and his return to Martin St. was unable to completely dodge a second cruiser driven by Constable Lee Smith, and clipped the car's bumper. Constable Smith escaped unharmed.

Proceeding south on Martin St. the youth led police through a maze of

back streets behind Main St. often reaching speeds up to 55 miles per hour.

Police said Constable Amis managed to pull the youth over once on Steeles Ave., but he made a fast get-a-way leaving police to resume the chase.

The 1977 AMC Matador and its young driver finally came to rest in the middle of a hedge at 111 Victoria St. after the youth lost control of the car.

The suspect then fled on foot but was soon apprehended at the CNR tracks on Martin St. by Constable Carl Sapelak.

Police said during the course of the chase the youth ran through 13 stop

signs and narrowly missed hitting several pedestrians and numerous parked cars.

The adventure began last Tuesday afternoon when the youth escaped the custody of the Sylapps Centre officers during an outing to Square One shopping centre in Mississauga.

Police said he stole a vehicle from the parking lot and travelled to Cobourg, where he stole the AMC Matador, from Northumberland Motors Ltd. in that town.

Damage to the car is estimated at \$25 and \$80 to the police cruiser.

The youth was returned to the Oakville centre by police.

### Shrubs expanded

A total of \$6,000 will be spent on the development of a demonstration wildlife shrub planting area and the landscaping of various points and lookout stations at Mountsberg Wildlife Centre.

To date the HRCA has

implemented three phases of a comprehensive landscaping plan for its wildlife walkway area at the Centre.

Each phase requires \$3,000 and in 1980 the authority hopes to complete the last two phases of the program.

## WEST END MEAT MARKET

140 Main St. E.

878-6501

### FREE DRAW

WIN-A-FREEZER-PAK!

All you have to do is introduce a new Customer and we will put your name in the Draw!

DRAW - APRIL 6, 1980

Call in at the store for Details

### Specials

For The Freezer:

Loin of Pork 12 to 15 lb. \$1.49 lb.

Loin Roast of Pork 3 to 4 lb. \$1.59 lb.

Loin Pork Chops \$1.79 lb.

Bacon 10 lb. box 79¢ lb.

Fresh Ground Beef \$1.19 lb.

Wholesale Fish

CHARGE and MASTERCHARGE now accepted.

## Rotary Club Youth Leader is sought

The Rotary Club of Milton is seeking applicants for the Rotary Youth Leadership Award.

The winner, between the ages of 18 and 24 will be sponsored by the club at a week-long seminar

from June 15 to June 21 at Ridley College in St. Catharines, Ontario.

Applicants must be leaders in their school, church, or youth group, and be interested in improving their knowledge of themselves and others.

The applicants must have completed high school.

In 1978 the Rotary Club of Milton sponsored Colin Best, and Debbie Ban Hatten in 1979.

Transportation costs, food and lodging are provided for by the sponsoring club. The seminar will cover many aspects of leadership, with simulation games, lectures, panel discussions, meetings in small and large groups, under the guidance of Dr. David Dineen.

Applicants are required to appear before the RYLA committee of the Rotary Club for an interview.

If accepted, the applicant must return to the Rotary Club after the RYLA week and discuss his experience at the seminar.

There are some rules to follow if accepted for the sponsorship which include: no liquor, and participation in the entire program, including meals, etc.

If you are interested in applying, contact Burke McNeil (878-4643) as soon as possible for further information.

## Champion addition

Roy Downs, editor of The Canadian Champion has announced the appointment of Jane Muller to the editorial staff of the newspaper.

Miss Muller, 21, was born and raised in Guelph and was a graduate of John F. Ross Collegiate Vocational Institute. After finishing secondary school, Miss Muller studied journalism at Conestoga College.

She is currently living in Guelph but plans to move to the Milton area shortly. An accomplished musician, she plays the flute, piano, and guitar and is an avid reader. At The Champion she will be primarily in-



Jane Muller

volved with writing stories about the people of Milton, as well as covering general news. The first of her "up close and personal" style stories begins this week.

## Smash 'n grab

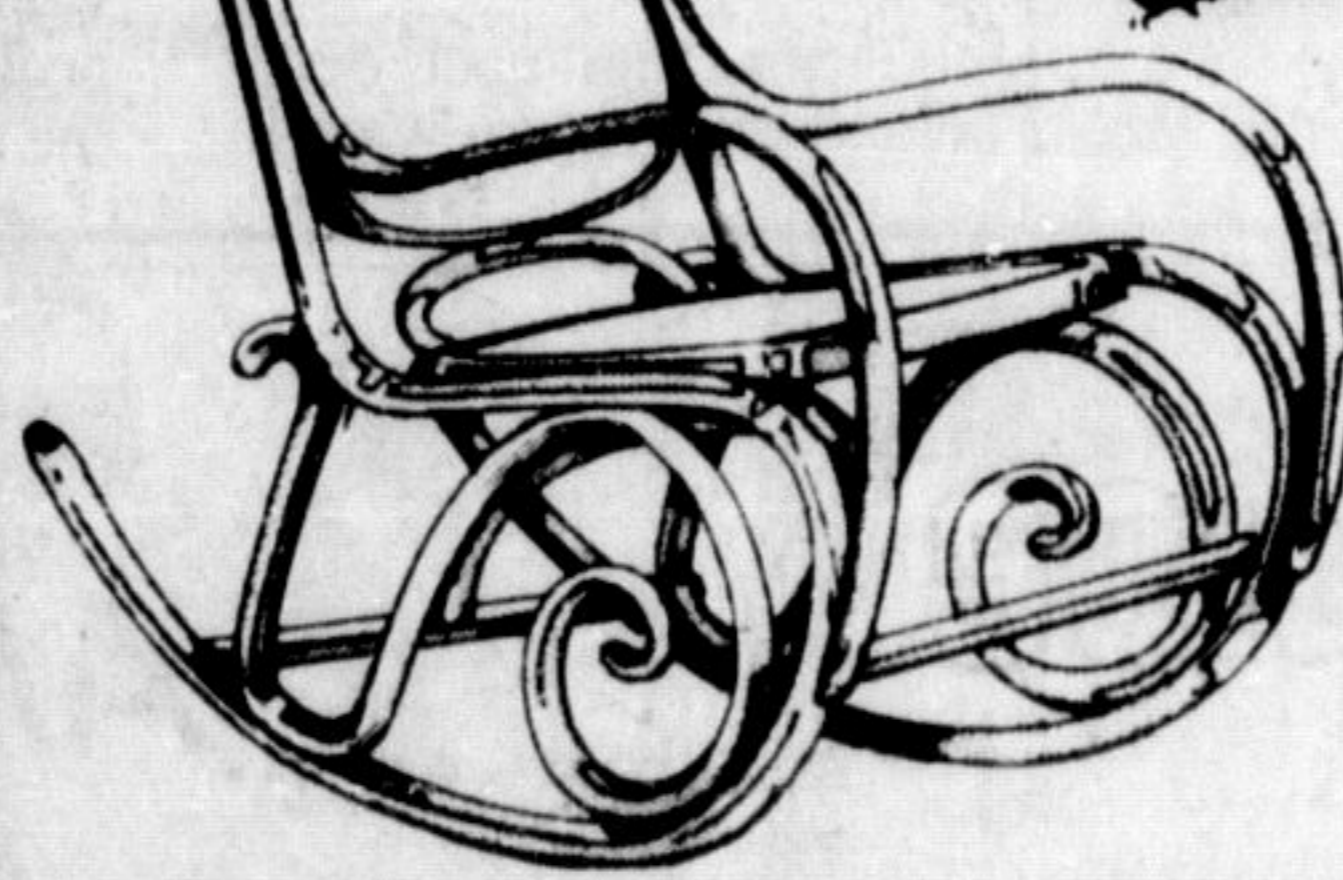
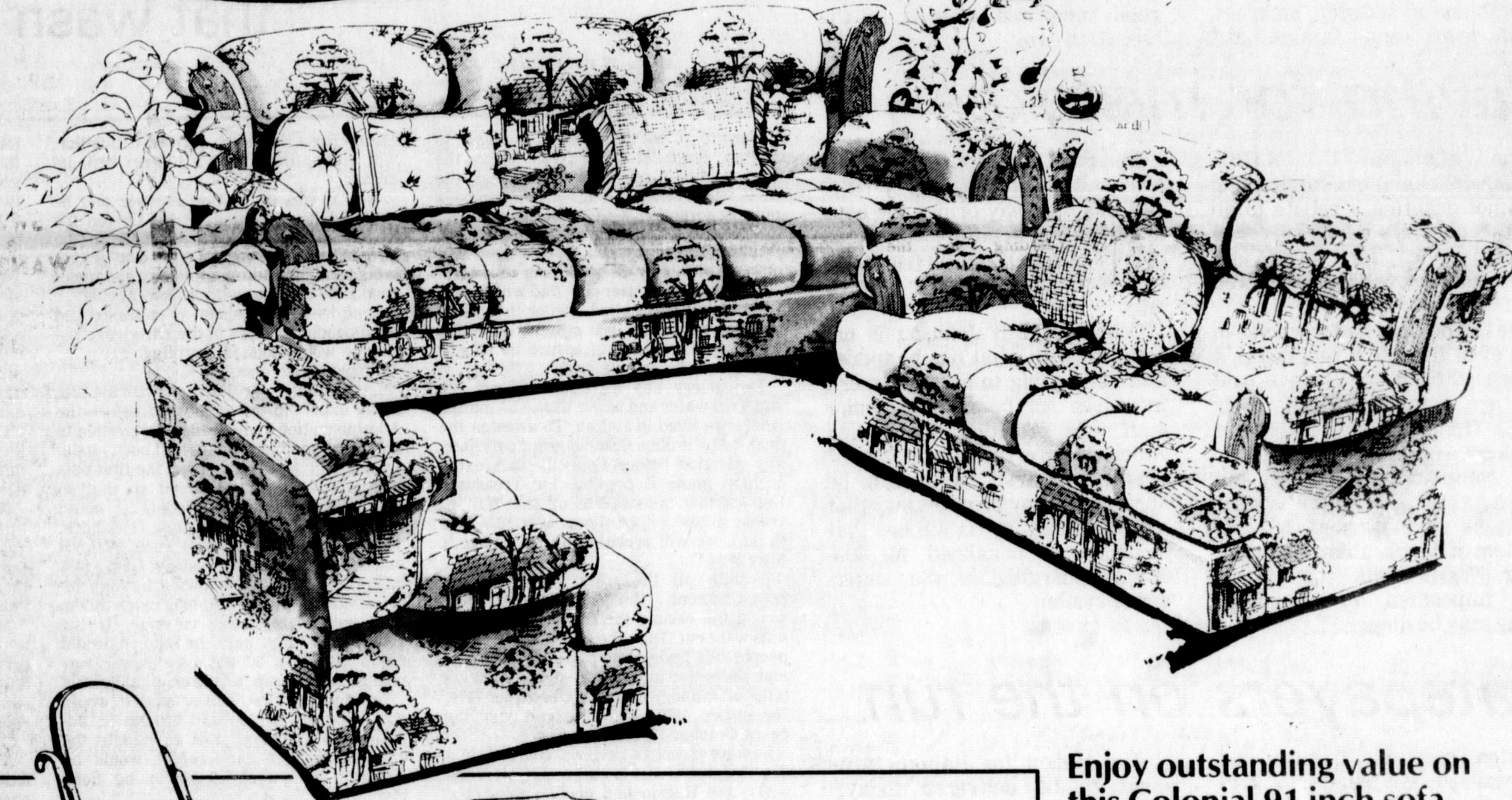
Halton Regional Police are investigating a break and enter at Supersave grocery store on Main St. that occurred sometime Friday night.

A total of 13 cases of cigarettes valued at \$5,384 were stolen from the food store premises.

Police said there is no indication of forced entry and suspect thieves hid in the store after closing hours or had key to the store.

The theft was discovered 7:30 Saturday morning by store employees.

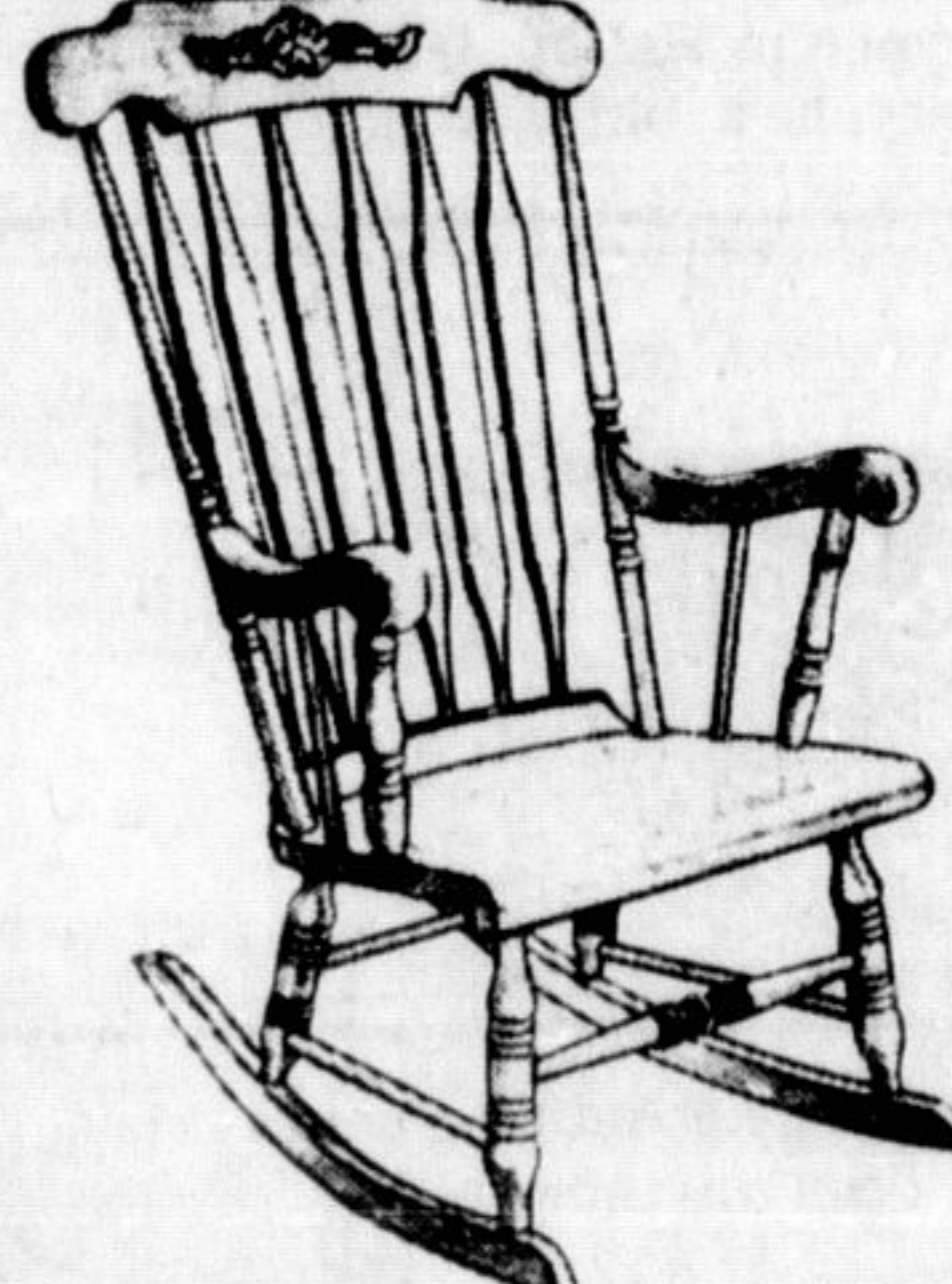
# Leon's birthday sale



Bentwood rockers

Cane seat and back. Walnut colored frame, laminated wood, hand rubbed finish. 22" wide, 40" high.

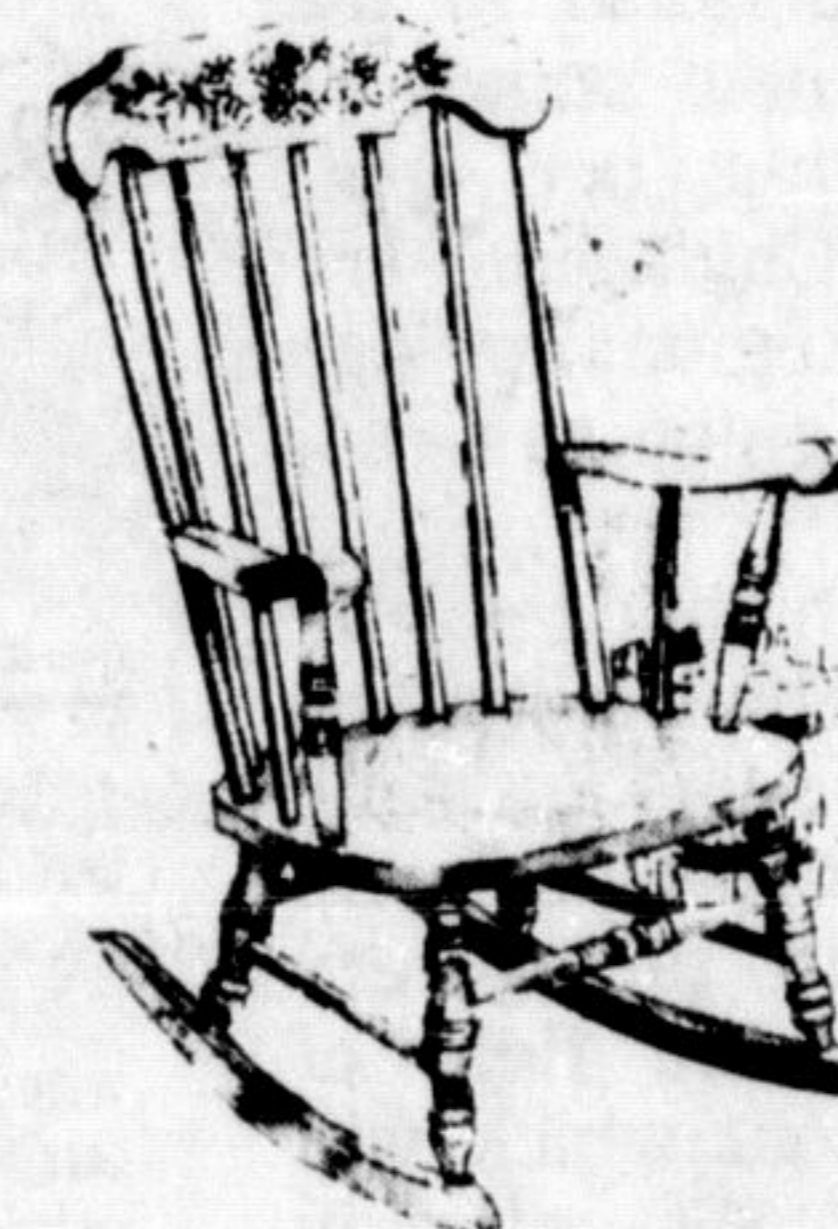
\$97<sup>93</sup>



Colonial rockers

Maple finished hardwood arrow-back style.

\$59<sup>97</sup>



Boston rocker

Handsome antique maple finish.

\$44<sup>86</sup>



Folding rocker

Elegant fabric on the seat and back. Thick ramon wood frame. Folds for easy storage.

\$54<sup>76</sup>

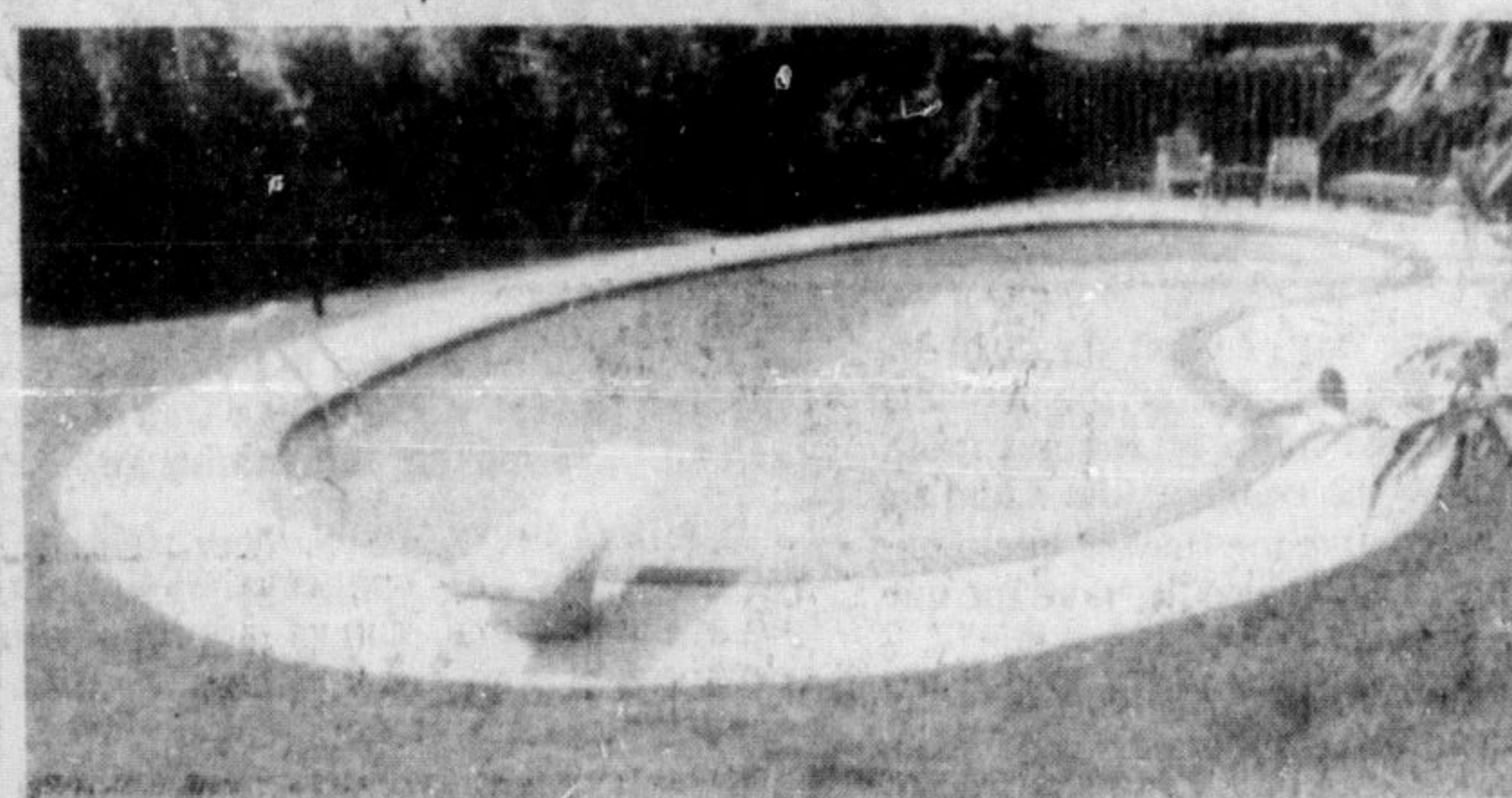
### Enjoy outstanding value on this Colonial 91 inch sofa and chair

Add warmth, comfort and quiet dignity to your home. The charm of colonial styling at this special sale price. Beautiful homespun print in durable nylon. High winged back with rich honey finish showwood trim. Thickly foam padded backs and seats for deep seating comfort. Hardwood frames and tempered steel spring underconstruction. HOUSE OF BRAEMORE standard division.

sofa and chair \$337<sup>86</sup>

60 1/2 inch matching Love Seat \$167<sup>07</sup>

## Last Year Aqua-King Pools Corp. Ltd. Installed 22 Fiberglass Vinyl Liner Below Ground Pools ...



Each pool was installed when promised in the allotted time, with no sub-contracting and in an entirely satisfactory manner.

Their addresses are listed below:

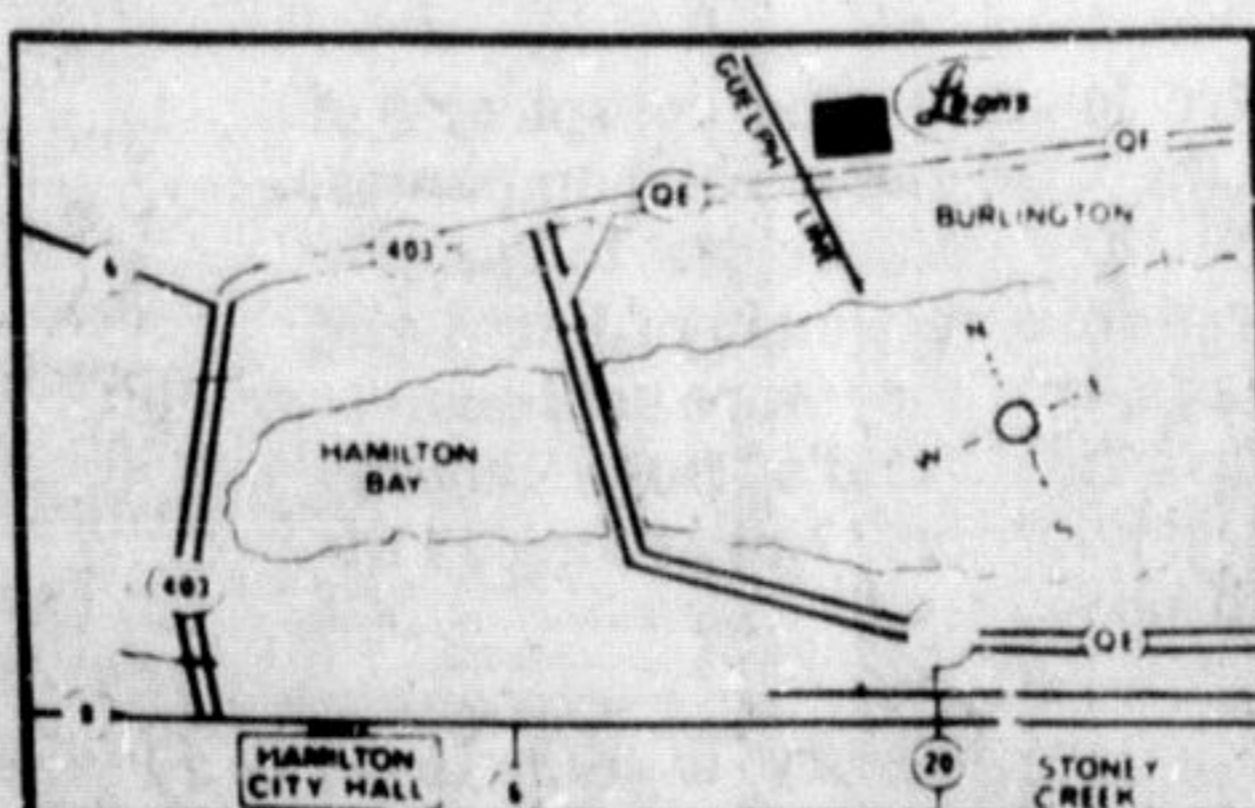
- |                                 |                               |
|---------------------------------|-------------------------------|
| 1335 Beckett Court, Burlington  | 1 Hilltop Place, Dundas       |
| 248 Applevale Court, Burlington | 55 Germoda, Oakville          |
| 1220 Rousseau Place, Burlington | No. 5 Highway, Waterdown      |
| R.R. 3, Georgetown              | 1896 Four Seasons, Burlington |
| 2464 Martin Court, Burlington   | 1193 Havendale, Burlington    |
| 203 Calmcraft Road, Oakville    | 5337 Salem Road, Burlington   |
| 1284 Kana Road, Mississauga     | 1269 Abbey Court, Burlington  |
| 2341 Robin Drive, Mississauga   | 394 Bartley Road, Oakville    |
| 1320 Elgin Crescent, Oakville   | 1900 Four Seasons, Burlington |
| 1886 Heather Hills, Burlington  | 2030 Duncan Road, Oakville    |
| 1882 Heather Hills, Burlington  | 1133 Crofton Way, Burlington  |

This year Aqua-King Pool Corp. Ltd. will be installing 25 swimming pools in exactly the same manner. Would you like to be one of the 25?

# Aqua-King

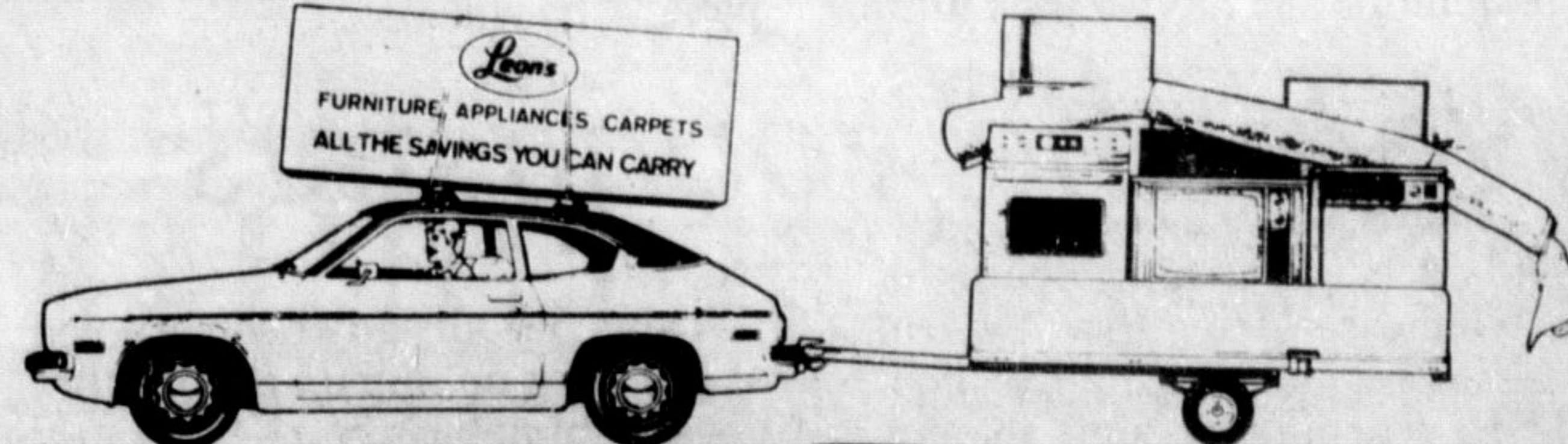
Pool Corp Ltd.

Phone Now 637-8903



### ON-THE-SPOT PICK-UP DELIVERY EXTRA WITHIN 48-HOURS

North Service Road Burlington  
Q.E.W. & Guelph Line interchange  
OPEN DAILY 9 A.M. TO 6 P.M.  
THURS & FRI TO 9 P.M.  
3 1/2 Million C. Ft. Furniture - Appliance Warehouse and Showrooms



## furniture — carpet — appliance warehouses and showrooms