

Assessment is confusing Krantz says

Although new assessment notices have gone out to all Milton rate-payers with an explanatory note, Milton councillors are still concerned "90 per cent of them don't know what it means."

Councillor Gord Krantz made the comment Monday night at Milton Council's meeting. He said Miltonians may cast the notice aside, thinking it isn't significant.

He said if they did that, they run the risk of receiving "a real shock when their tax bill comes in."

Mayor Don Gordon said the province had sent out notices with the assessments telling people to read it because it's important.

"If the people still ignore it, what more can they do? What obligation are they under?" he said.

Councillor Blanche Hinton said the notices are confusing.

"I think people are being confused and frustrated by these notices, and I think the vast majority of it could have been avoided if the notices had been worded and phrased in a way that people can understand."

Councillor Krantz said he had talked to one person who wouldn't believe his taxes could go up by 100 per cent.

"I told him to call town hall if he didn't believe me. He did, and they would. He couldn't believe it."

Treasurer Don Lougheed said he had heard of a similar case, but since 1970, he said, the home had installed a pool, recreation room, and addition, but had not had its assessment increased.

Drumquinn

by Mrs. Cecil Patterson

The weekly Saturday night euchre at Hornby Community Centre was held with the following winners: Ethel Webb, Mildred Mason, Hazel Preston, Edith Marshment, Mac Alexander, Frank Peacock, Ralph Featherston, Mrs. V. Sinclair.

Lone hands prize won by Marie Peacock was donated by Flash Taxi. There were 10 tables in play.

Derry Rd. limit pegged at 80

Regional Council will today be asked to institute a uniform speed limit of 80 kilometres per hour along Derry Rd. from Highway 25 to Walker's Line.

This is contrary to a request by residents living along Derry Rd. that the stretch from Walker's Line to Bell School line be lowered to 60 kmh.

The move to lower the limit was brought to Regional Public Works Committee by residents in the Appley Line to Bell School Line area who objected to the 80 kmh limit while neighbors in the Walker's Line to Appley Line stretch were enjoying a 60 kmh limit.

Prior to Christmas, the committee had asked staff to consider and report on the possibility of lowering the limit to 60 kmh for the entire stretch of the road.

Staff reported to committee last week that the limit between Appley Line and Bell School Line should be temporarily lowered to 60 kmh until road construction was completed. When the road improvement was finished, the staff said the limit should be posted back up to 80 kmh.

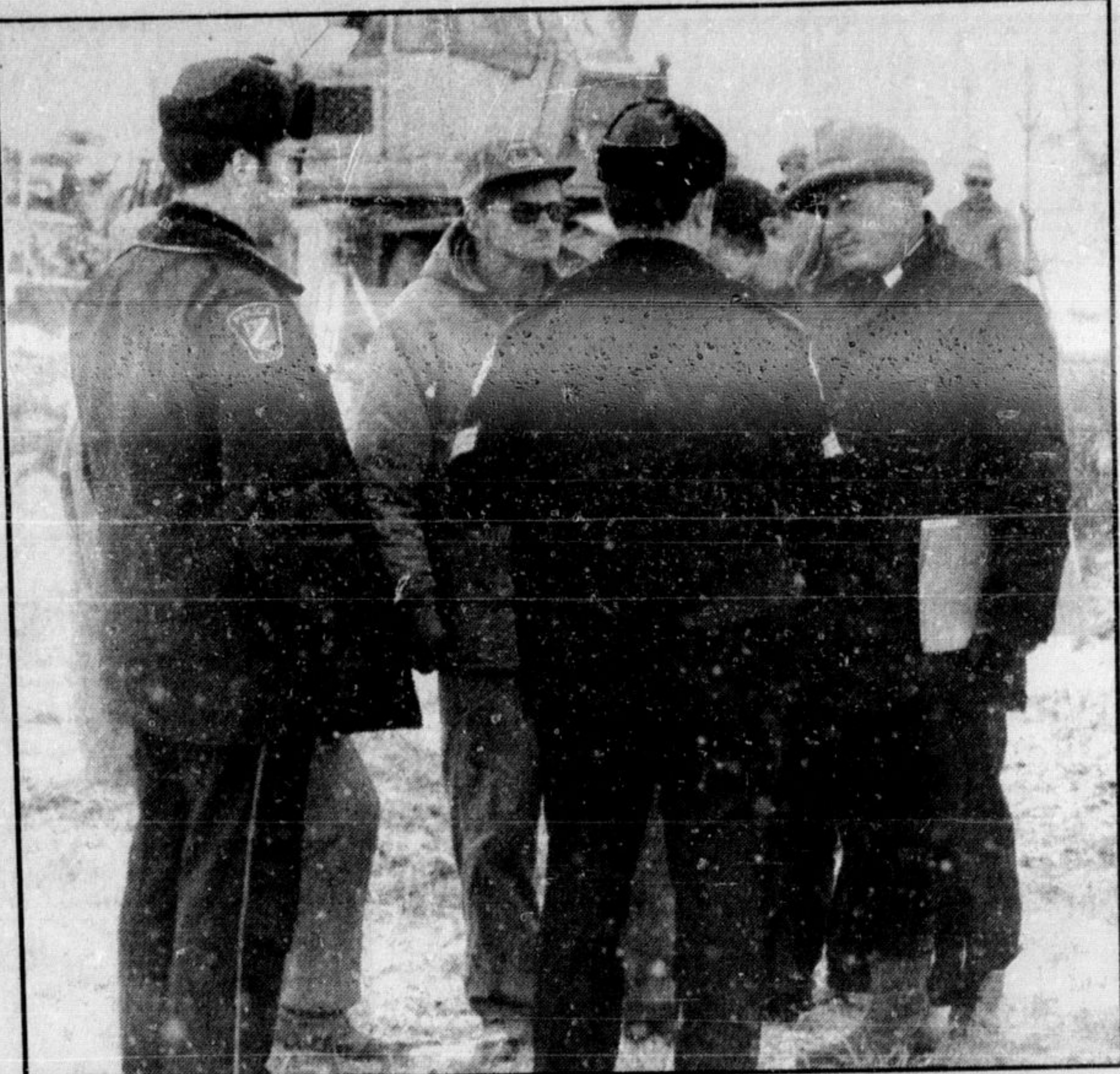
However, committee decided the best method would be to re-sign the complete stretch to 80.

MP Art Phillips visits here Fri.

Art Phillips, MP for Vancouver Centre and a potential successor to Pierre Trudeau as leader of the Liberal party, will be in Milton Friday night.

Mr. Phillips will be at Milton Mall to meet the people, answer questions, and throw his support behind Bill Perras, Liberal candidate in Halton.

Mr. Phillips, former mayor of Vancouver and Small Business and Mining critic in the Liberal Shadow cabinet, will arrive at the mall at 9.30 p.m.



HALTON REGIONAL POLICE explain their job as keepers of the peace while Ontario Hydro security co-ordinator John Kearns, right, and farmer Jim Stark listen Friday. Hydro started construction at the Stark farm.

Farmer wary of hydro construction

A Milton area farm manager is on the spot this week.

An Ontario Hydro corridor construction crew is working near the Lot 3, Concession 5 farm while manager Glenn Copeland is taking steps to protect 34 Aberdeen Angus cows with calf. One cow cost \$7,500.

Copeland is asking for some grace from Ontario Hydro, enough time for farm owner Ernie Wilson to return from vacation. Wilson can not be contacted. He is expected home by February 5.

As of Tuesday morning Copeland said there were still talks between he and Ontario Hydro Construction Field Contact Representative Neil Gilker. "I think we can work out some kind of compromise," said Copeland. He indicated Hydro may perform some soil tests, then leave.

Copeland was less optimistic Monday when there were indications Gilker would not be able to keep construction crews off the farm.

The main problem concerning Copeland is the cattle. The animals could become frightened or tangled up with some construction equipment and abort, according to the farm manager.

"I don't think I'm getting through to them about the cattle," Copeland said Monday, referring to Ontario Hydro.

The cattle graze on hay which is placed amongst the trees on the lot.

Copeland also expressed reservations about the quality of fence Ontario Hydro would use.

"I've seen some of the fence they have and it just wouldn't be good for cattle," said Copeland.

"We use standard farm fence materials and gates," according to Chris Taylor of Ontario Hydro's community relations department.

"We're not objecting to them coming in. We'd like a settlement on the land. They've made an offer and we've not accepted it," said Copeland. "I hate to give the public the impression we are blocking progress, if this is progress," he said.

Call 844-7354, 24 Hrs.

NOW IS THE TIME TO ORDER YOUR HEAT PUMP OR AIR CONDITIONING SYSTEM AT TREMENDOUS SAVINGS! BRIDLEWOOD

Oakville Mississauga 844-7354 Milton Burlington

Fast Installation!

Cruiser project proves success

A pilot project to rebuild Halton Regional police cruisers has proven successful and has now been given the official nod by police commissioners to continue.

Fifteen vehicles will be refurbished this year—instead of being sold—at the Halton Region Works Department service building in Milton.

The police department expects to realize a saving of about \$3,000 per car through the restoration process.

A 1978 Plymouth Fury marked cruiser was the experimental vehicle. The cost to refit the vehicle, including a new coat of paint totalled \$2,350 according to George McMorris, police administrator.

The test vehicle—cruiser 223—received a new engine, universal shock absorbers, front end, springs, cooling system and brakes.

All parts are wholesale, according to commission chairman Harry Barrett. Labor on the cruiser cost \$307; a price which included mechanics' and administrator's fees.

A new cruiser costs \$7,000. Prior to the experiment, used cruisers would be sold for \$900.

Cruisers last approximately 14 to 16 months or 65,000 miles before they are taken off the road.

Grant

Regional council has authorized staff to apply for a \$4,000 grant which would be used to study corporate planning in Halton.

Regional council has authorized staff to apply for a \$4,000 grant which would be used to study corporate planning in Halton.

WEST END MEAT MARKET

140 Main St. E. 878-6501

FREE DRAW WIN-A-FREEZER-PAK!

All you have to do is introduce a new Customer and we will put your name in the Draw!

DRAW - APRIL 6, 1980

Call in at the store for Details

Check These Specials

Burn's Wieners 10 lb. box **89¢** lb.

Pride of Canada Bacon **\$1.29** lb. 1 lb. pkg.

Breakfast Sausage **\$1.39** lb.

Haddock Fillets 5 lb. box **\$11.25**

Fresh Ground Beef **\$1.29** lb.

WHOLESALE FISH

Haddock	5 lb. box
Cod	5 lb. box
Perch	5 lb. box
Sole	5 lb. box
Boston Blue Fish	5 lb. box
Trout a-la-Mer	5 lb. box
Trout Dressed	5 lb. box

DANCEWEAR CENTRE
198 Main St., Milton 878-1303

STOCK REDUCING SALE
20% to 50% OFF
ON MANY ITEMS

HOURS: Monday-Thursday 10 a.m. to 5:30 p.m.
Friday 10 a.m. to 8:00 p.m.
Saturday 9:30 a.m. to 5:30 p.m.

peggy's FINE LADIES' WEAR

FINAL WEEK

1/2 PRICE STOREWIDE CLEARANCE SALE

Reductions on Most Seasonal Stock

CO-ORDINATED SPORTSWEAR 1/2 PRICE
(slacks, jackets, skirts, vests) by Koret, White Stag, Mr. Leonard, Ports International, Cling-fit, Breckenridge.

Fabrics of Your Choice: Corduroy, 100% Wool, Tweeds, Double Knits, Polyester.

ALSO: 2 piece Suits by some leading manufacturers - 1/2 PRICE - sample price - KORET Suit \$75 - NOW \$37.50 and up

* Blouses and Sweaters - Large Assortment **1/2 PRICE**

WINTER COATS by Aquascutum, London Fog, Collection International **1/2 PRICE**

Assorted 100% Tweeds and Wools
Coats with Zip-Out Liners reduced by 30%

* Dresses - 2 piece, 1 piece and long - **REDUCED 30 to 70% OFF**

Full Selection of Spring & Summer Stock Now At Its Best! **"ALL SALES FINAL"**

MILTON MALL 55 Ontario Street 878-1414

MEADOWVALE TOWN CENTRE 2900 Aquitane Avenue 821-0001

GO DO-IT-YOURSELF VALUES!

R20 \$12.99
6" x 15" Reg. \$13.99
Covers 50 sq. ft.

R12 \$13.99
3 1/2" x 15" Reg. \$14.99
Covers 90 sq. ft.

ONE WEEK ONLY

Rigid Foam INSULATION
4'x8'x 3/4" **\$3.85** Reg. \$3.95
4'x8'x 1" **\$5.15** Reg. \$5.40
4'x8'x 1 1/2" **\$7.70** Reg. \$7.90

VERMICULITE ATTIC FILL
\$3.15
Reg. \$3.35
Covers 12 sq. ft. 3" Deep

VAPOUR BARRIER
Keeps out dampness protects inside walls.
6' x 84" 02 mil.
Covers 500 sq. ft. **\$6.75**

Castle building centre
Castle building consultants, the knowledgeable staff

COPELAND LUMBER
CHAS B COPELAND LTD

700 Main St. E. MILTON, ONT. 878-8171
JUST EAST OF THE MILTON MALL

STORE HOURS
Mon to Thurs 8 a.m. - 6 p.m.
Friday 8 a.m. - 9 p.m.
Saturday 8 a.m. - 6 p.m.

FREE DELIVERY

JACK FRASERS Final Clearance
End reductions on fall and winter menswear!

Mens Outerwear \$29 to \$169 Orig. to 199.50 Leather coats, ski jackets, bomber styles, carcoat lengths and fabric topcoats, all reduced for this, our final clearance sale!	All-Wool 3 Pce. Suits \$99 Pure wool with excellent European tailoring and finish. The selection includes straight and angle flap pockets. In full and trim models. In plain, fancy and stripe looks.	Mens Sweaters 1/2 Price Orig. to \$45 Couturier and famous label V-neck and cardigan sweaters. In pure wool and wool blend yarns. Plains and fancies.
Mens Dress Pants \$19.88 Orig. to \$35 Mens woven poly gabardine and 100% cotton corduroy pants. Young mens all wool, poly-wool, tweed look and pleater pants.	Mens Gloves \$14.88 and \$19.88 Orig. to 21.95 Leathers, pigskins, split steer suedes, dress and driving gloves. Lined and unlined available.	Mens Sportswear \$14.88 to \$19.88 Orig. to \$40 J.F.'s entire stock of long sleeve velours, all-flannel shirts, yarn-dyed shirts and knits. Savings of up to 50% off.
Mens Sportswear \$14.88 to \$19.88 Orig. to \$40 J.F.'s entire stock of long sleeve velours, all-flannel shirts, yarn-dyed shirts and knits. Savings of up to 50% off.	Sportcoats/Blazers \$49 and up J.F.'s complete fall selection of tweed and corduroy sport jackets and DB blazers are on sale.	Winter Headwear 1/2 Price Orig. to \$40 J.F.'s entire stock of dress and casual hats. Mostly in Donegal patterns including Sherlock Holmes and Alpine styles.

JACK FRASER
Not all styles, colours and sizes are available but we'll do our very best to please you.

• Milton Mall, Milton • Burlington Mall, Burlington • Hopedale Mall, Oakville