



SOMEWHERE IN THE MIDDLE of this happy throng of Ernest C. Drury School Grade 1 students is Jim Aikenhead assistant program director of the Mountsberg conservation area school. The

students were in Mountsberg to take part in Changing Seasons, a program of educational enrichment offered by the Halton Region Conservation Authority.

Changing Seasons draws children

The Halton Region Conservation Authority has embarked on a new season of introducing children to the joys of nature.

Jim Aikenhead, assistant program director, said the Mountsberg Conservation Area is the scene again this year of a program called Changing

Seasons. It starts with puppet show put on by two staff members. This gives children an idea of what they will see.

Most of the children come from kindergarten to Grade 2 and for many, it is the first time they have been close to a living animal.

Mr. Aikenhead said children are usually divided into two groups. One group will go out to collect seeds while the other goes into the barns area to "meet" the animals.

The groups usually interchange halfway through the 90-minute program.

Mr. Aikenhead said Changing Seasons attracted more than 900 youngsters to Mountsberg last year and he expects that number to be equalled in 1979. Most of the children come from Halton but a few classes arrive from Peel and Hamilton-Wentworth.

Funeral service was conducted from St. Andrew's Knox Presbyterian Church Saturday, Rev. C.J. Kirk officiating. Interment was in Greenwood Cemetery.

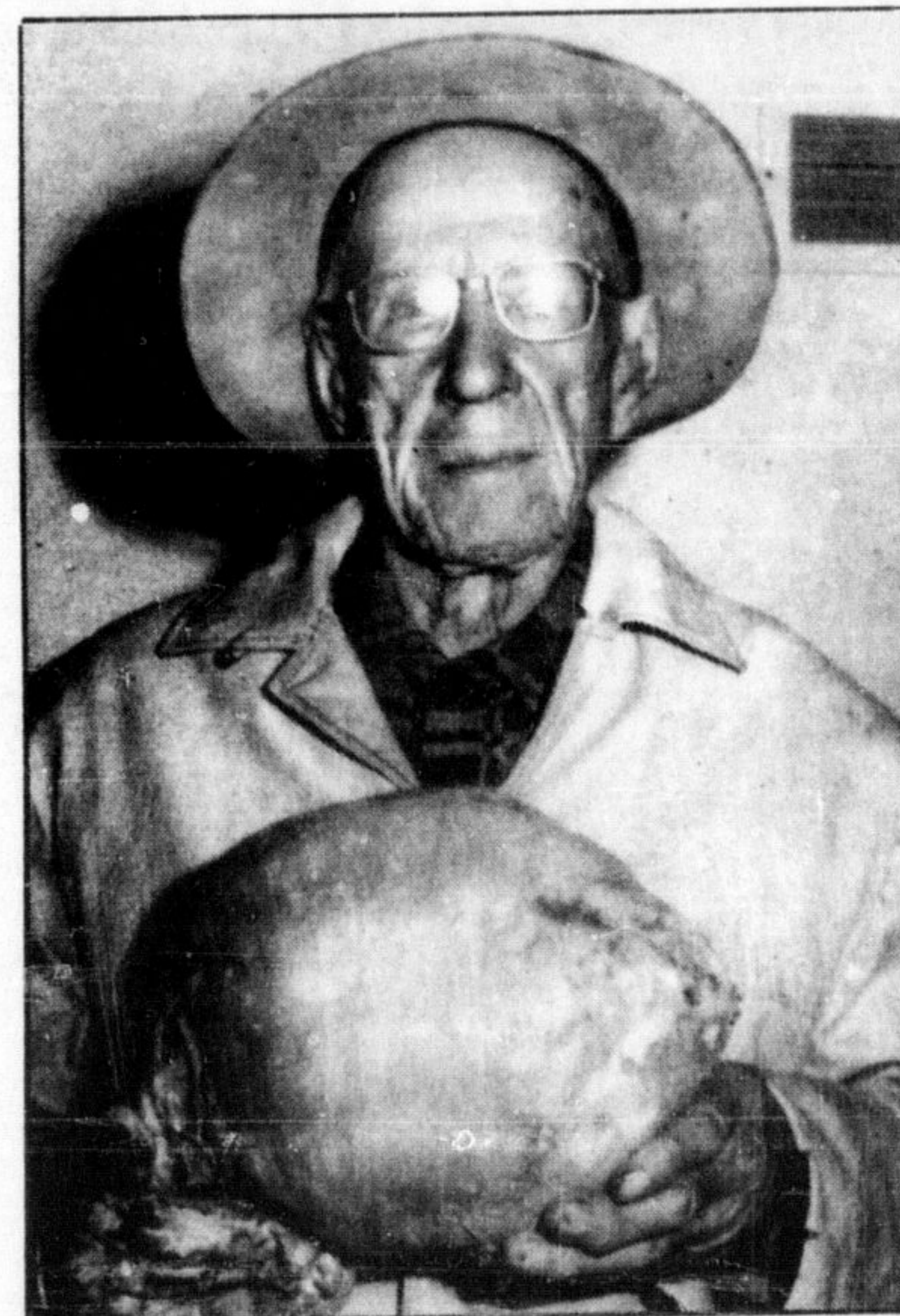
Obituary

David A. Wilson

David Alexander (Alex) Wilson, who resided at Tate Ave., Fort Erie, died Wednesday, Oct. 24, 1979 at the Douglas Memorial Hospital in Fort Erie.

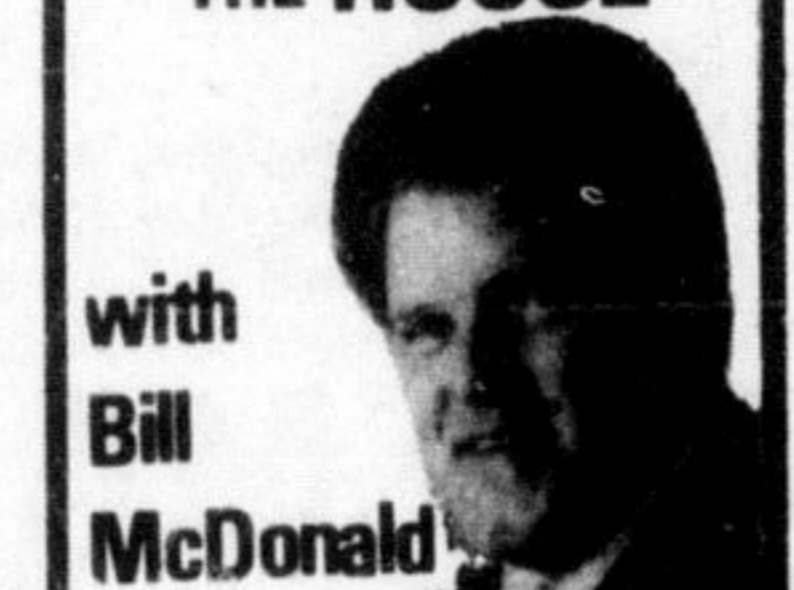
He was born in Milton Sept. 21, 1916 and was employed by the government of Canada as a customs officer. He resided in the Fort Erie area for about 40 years. He was a member, elder and clerk of session of St. Andrew's Knox Presbyterian Church, also a member of the Royal

Canadian Legion, Br. 71. He is survived by his wife Ruby (Service) Wilson, three brothers Stanley, Ernest and Arthur of Milton, two sisters Miss Ruth Wilson of Milton and Vera (Mrs. Donald McNabb) of Toronto, also two nieces and three nephews.



ALEX SHERRIFFS of 196 Ontario St. N. grew an eight-pound turnip on his property. The turnip is one of two he grew from a registered seed.

AROUND THE HOUSE



Moldy cheese is usually not spoiled. Cut off the discolored part and use the rest.

Keep clear plastic wrap in the refrigerator, and it won't stick to itself.

Almonds should be grated, not ground. Otherwise, too much of the oil will be expressed.

Remove basting stitches with a small crochet hook.

Kinky yarn? Wind it around a bottle, dip in water, and let stand until yarn is dry.

- Free Installation
- Free Service
- Lowest Monthly Rent Rates

Presented as a service to the community by:

AQUA WATER SOFTENERS
844-9781

Social council serves Halton

By Jim Robinson While there has never been a lack of social consciousness in Halton, those efforts which have been made were on a small scale and sometimes have been duplicated.

This need to centralize has been recognized for some years, but it was only in May that something started to be done.

That meeting brought together the mayors of the four regional municipalities, the regional chairman and representatives of the two United Ways serving Halton.

Out of that came the Halton Regional Social Planning Council with a mandate to prepare a report on the social needs of the region.

That report was presented Wednesday at Regional council. It is the foundation of a program to serve the social needs of the residents of Halton to cope with expected mushrooming growth in the 1980's and 1990's.

The role of the Halton Regional Social Planning Council is two-fold; one organizational and one conceptual.

The council members see the first role, "to coordinate the efforts of existing social planning councils and other interested groups to undertake regional studies, discussion, projects and programs consistent with the objectives of Participating social planning councils and other members."

The second role states: "The common purposes of Halton's Social Planning Councils are to strengthen individual and family life, to enrich life in the community, and to promote and coordinate an effective, well-balanced program of health, welfare and

recreational services." The social planning council presented regional councillors with what they called "the social facts of Halton."

In 1976, 27 per cent of Halton's population was under 14 or 61,400 in total. Many of these children (30 per cent) come from homes where both parents work. It is estimated 20,100 of Halton's 67,000 families fall in this category.

In 1975, six per cent or about 4,000 of Halton's families had a single parent heading the household.

The social planning council states "alternate care is a necessity." Daycare, after school care and care during lunch time is now being examined.

They note more attention is going to have to be given to the 18 per cent (41,000) of Halton's population between the ages of 15 and 24. Halton has recreational outlets, drop-in centres and school activities, but something else is needed.

This group will need counselling on careers and it will fall to guidance counsellors and social agencies to provide help.

Of special significance is the so-called "troubled child" who through inherited or learned characteristics, is in difficulty. According to a Ministry of Education report, 14 per cent of Halton's young people fall into this category.

This group can consist of anyone from the handicapped and those with learning disabilities to the most gifted of children who are too bored to take an interest in school.

The Children's Assessment and Treatment Centre is trying to do that

job but it is limited by funds. Last year the centre handled 312 young people but the waiting list ranges between 72 and 86.

The family court, the police, and social workers are trying to cope with the 2,774 children under 16 who came in contact with the law last year. Fully 1,764 were repeaters. The case loads are high and the number of those trying to help are limited even now.

At the other end of the scale are seniors whose numbers are growing yearly. In 1977, 12,200 people were over the age of 65 but by 2001 Halton will have 37,500 over that age, based on current growth trends.

Social planning committee member Rob McKenzie said most of the needs of seniors are now met by volunteers, with unpaid boards of directors who guide provision of service.

"Their funding bases vary from nearly exclusive government funding to no government funding at all; from heavy service club funding to none at all.

The underlying statement being made to regional council is the lack of funds and workers.

"Many of the social service agencies have heavy caseloads some because of the number of clients is increasing dramatically; some because cutbacks in funding have not allowed replacement of staff who have left," Mr. McKenzie said.

"Agencies also sometimes find that their perspective on needs and solutions is limited by their own busy-ness.

"They're so busy fighting alligators, they can't see the flood approaching the swamp," he said.

In the case of agencies needing help in terms of staff, programs and advice, the social planning council would provide assistance.

"We can help agencies develop policy papers and briefs to funding bodies.

"We provide consultation and advice on funding sources and the use of existing sources.

"We provide information on grant resources and funding applications.

"We provide information on a wide variety of topics from social needs to agencies, to community problems.

"We provide liaison among many agencies within Halton, and with organizations and governments outside the region", said social planning council member Bill Tom.

The council has started to prepare a program of improving funding to all

agencies and it will be making a presentation to the region in November.

Of interest to the region is a 350-page book the council is working on to provide all the social statistics about Halton. It has also completed a bibliography of research, listing more than 300 studies which have been conducted in Halton.

The social planning council is concerned about the lack of recognition of Halton by its residents.

The low voter turnout (42 per cent in the last municipal elections) the high mobility of residents, and the high proportion of commuters indicates what council member George Heym called "the likelihood of a sense of isolation amongst many members of our community."

"Many people here don't see themselves as living in a place called Halton.

"They live on Commercial St., or in Acton, but not in Halton."

"People also see themselves as unable to affect many of the events which impact on their lives."

On the positive side has been the participation of Halton residents as volunteers.

Operating in a coordinating role, the social planning councils of Halton were able to bring 2,000 volunteers in contact with agencies in need of assistance.

They provided 320,000 man-hours of time to 33 agencies which equals \$1,100,000 of work based on the minimum wage.

Mr. Tom said the creation of Halton Region and the regionalization of social services can work well with the Halton Region Social Planning Council for joint good.

"We're an organization that started from the grass-roots up," he said.

THE REGIONAL MUNICIPALITY OF HALTON PUBLIC NOTICE

PROPOSED PROVINCIAL MODIFICATIONS TO THE REGIONAL PLAN

Please be advised that the letter from the Ministry of Housing outlining the Proposed Provincial Modifications to THE REGIONAL PLAN has been received and may be inspected at:

The Regional Clerk's Department
Regional Administration Building
1151 Bronte Road
Oakville, Ontario



These proposed modifications will be discussed at the November 13, 1979 meeting of the Planning Committee to be held in Committee Room No. 1 at 1:30 p.m. in the Regional Administration Building.

Anyone wishing to appear before the Planning Committee as a delegation may do so by advising the Regional Clerk's Department by 12:00 noon, November 8, 1979.

Planning Committee's recommendations on this matter will be made to Regional Council at its subsequent regular meeting of Wednesday, November 21, 1979.

Dated at Oakville this 24th day of October, 1979.

Garfield Brown
Regional Clerk

TELEPHONE: 827-2151
Ext. 333

Announcing
Inqlis
Washers
Dryers
Dishwashers
Fridges Stoves
Milton Appliance
805 Main St. E.
Milton
878-0236

SNOW BLOWER FREE
ELECTRIC START
\$999.
SPECIAL
10% ALL SNOWMOBILE CLOTHING
BIG DISCOUNT ON ALL SNOWMOBILES
Arnold's
LAWN AND GARDEN EQUIPMENT CENTRE
878-8121
Corner of Hwy. 25 & Derry Road South, Milton

Anniversary

SALE

It's our 5th year in Milton, we'd like to extend this invitation to all the folks in Milton and area to participate in our special anniversary appreciation sale... we'll be expecting you, Frank, Petra, Marilyn.

COUGAR WILD COUNTRY BOOTS

MEN'S, BOYS' WOMEN'S
Regular \$46⁹⁸ to \$49⁹⁸

ANNIVERSARY SALE PRICE...
\$34⁹⁸ and up

Ladies' Leather Dress and Casual Boots Regular \$60 \$40	Ladies' Kiki Casual Boots Regular \$40 \$30	Country Lane Leather Boots Regular \$80 \$60
--	---	--

FREE SET OF SPRAY and WAX WITH EVERY PAIR OF LADIES' BOOTS PURCHASED

Beejay Insulated Boots Regular \$55 **\$39⁹⁸**

Selecta FOOTWEAR

250 MAIN STREET (Across from Post Office) 877-7665 MILTON

Thurs. & Fri. till 9

WE KNOW WHEN

Call us for automatic fuel oil delivery.

TEXACO Home Comfort

R.G. (BOB) CLEMENTS
835 STEELES AVE.
MILTON PHONE 878-3431

A good look at your attic could save heat and dollars

A well-insulated home uses far less energy for heating than a poorly insulated one. To fully utilize the energy you pay for, there should be a full 6 inches of insulation covering the ceiling and 3 inches in all outside walls.

Heat can also leak through doors and windows. That's why well-fitting storms, good weather-stripping and careful caulking are sound investments.

You can conserve energy and help reduce costs by keeping more of the heat you use inside the home.

your hydro **milton hydro**
250 Main St. Phone 878-2345

CONSERVE ENERGY