

# Tree planting passed

This fall, the Halton Region Conservation Authority is taking applications for two tree-planting programmes in the rural areas of the watershed.

The Farm Tree Replacement Programme is primarily designed to assist rural landowners, with a minimum of 10 acres in substituting the once plentiful elm trees lost through

Dutch Elm Disease. The Dutch Elm Disease, imported from Europe, virtually wiped out all the indigenous American Elm in the Region. Although costly treatment is now available for infected trees, to date, scientists have not developed an Elm seedling immune to the disease.

Moreover, many of the remaining hardwood

trees lining roadsides in the Halton region, planted in the late 1800's, are now in their twilight years. The Red Maples, once numerous along laneways, have dwindled over the years because of cutting and old age. The Maple's life span is about 100 years.

With a minimum order of 25 and a maximum of 100 trees, the Authority will plant six to eight foot high trees at a cost of four dollars a tree. Applicants can choose from Sugar Maple, Red Oak, White and Mountain Ash and Carolina Poplar. Deadline for applications is October 1, 1979 with planting later in the month.

The Farm Tree Replacement Programme was started in 1973 with an average of 1,500 trees planted annually. Applications are handled on a first come, first serve basis.

The sister project, the Private Lands Reforestation Assistance Programme, is designed to reforest poor quality agricultural land with a variety of soft and hardwood seedlings. At a cost of one cent per tree the Authority will plant a minimum of one thousand trees to a maximum of twenty thousand per farm.

The seedlings are 14 inches high. The deadline for applications is Jan-

uary 1, 1980 with plantings commencing in the spring.

All applications will be reviewed and an Authority staff member will inspect the site before planting.

John Bush, director of the programmes, estimates the Authority plants about 100,000 trees annually.

"We have had a very good response from the smaller landowners to the programmes, but it

seems, the 100 acre and over farmers are not interested or are not aware of our programmes."

Also a concern to Bush is that many of the applicants who adopt these trees do not take good care of them. Trees, for the first two years, need maintenance. They should be watered during dry spells and weeded around the trunk.

Interested applicants should contact the Authority office at 878-4131.

## One rung at safest with ladder

Success is not always found at the top of the ladder. In fact... many "do-it-yourselfers" are on their way to the biggest fall in their lives as they rush outdoors before winter sets in to make needed home, barn or shed repairs or to paint.

Dr. David Goldfinger, medical consultant for Combined Insurance Company of America - Toronto, warns that "a fall from almost any height on a ladder can result in a serious injury or even a fatality."

The firm's safety and research team cautions climbers to:

—never use ladders that are too long or too short for the job, and always place the ladder in a position where you will feel most comfortable in working from it.

—stabilize both the ladder's base and top before taking the first step

upwards. When working on cement or other slippery flooring, place rubber "boots" on the base of the ladder. These may be purchased at your local hardware store.

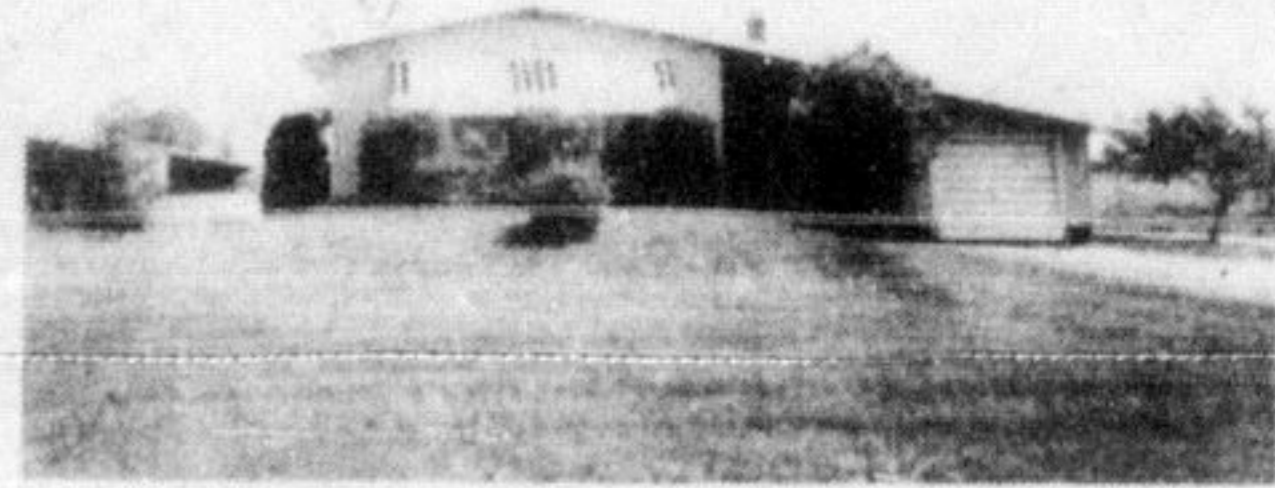
—use only ladders that have rungs "rabbited" into them.

—Always use accessory equipment to hold your tools or paint.

"If you come across a person that has fallen and appears injured, let the patient lie as motionless as possible, exactly where he is. Don't try first aid unless you've been trained," said Dr. Goldfinger.

"So call a doctor, an ambulance or your local fire or police emergency station and then cover the patient with a light blanket. Above all, do not give the injured person a stimulant to drink," concluded the doctor.

**co-op trust realtor**



**CAMPBELL HEIGHTS-CAMPBELLVILLE**

Just listed. An executive ranch in a picturesque country setting but located in the Village. Over 1/2 acre treed lot with ravine, 3 bedrooms, balconies off dining room and master bedroom, log burning fireplace in family room, heat pump system, 25 x 22 ft. hobby or workroom. Asking \$118,000. Call JIM SIEDERS 637-3883. Co-Op Trust Realtor, Burlington.



**S-P-R-E-A-D OUT**

- \*\* TEN ACRES of countryside
- \*\* TWO BARNs, great for the hobby enthusiast
- \*\* Custom built three bedroom, 2 bath, split bungalow.

Call PEARL CAMERON at 637-3883 or Res. 632-9349.

**CO-OP TRUST REALTOR**  
518 Brant Street  
Burlington 637-3883

**11% MORTGAGE**

3 bedroom, 2 storey home in old Milton  
Features include eat-in kitchen, large dining and living rooms, 3 piece bathroom, and 2 piece washroom, large attached single car garage, plenty of storage room. 70' x 135' well treed lot.

**\$49,900**

---

**45 ACRES**

Vacant land, well drained, orchard-type soil between Milton and Georgetown.

**BILL KELLY**  
**Real Estate Broker**  
**878-6800**

**MEADOWVALE  
PRESTIGE AREA**  
A solid brick three bedroom home. L-shaped living and dining room, spacious, eat-in kitchen with walkout to a large, well landscaped backyard. Finished recreation room with a full summer kitchen and fourth bedroom. Maintenance free exterior. Great Value \$87,900.00!

**LOT - 65' x 153'**  
A comfortable bungalow with cozy fireplace, upgraded broadloom and finished recreation room. Did you notice the lot size? It includes an insulated, heated workshop, double, paved drive and beautiful mature trees. Don't delay.

**4.3 ACRES**  
The leaves are falling... but don't wait for home prices to go up! This fine, three bedroom home is situated on a picturesque FOUR POINT THREE ACRES only minutes from Milton. Two fireplaces, pool, large shed and many extras. See this exciting property while its still priced at only \$106,000.00!

**MILTON - COUNTRY**  
An exclusive home nestled on FIVE beautiful acres of choice country property! This home offers a large family room with floor to ceiling fireplace, a super party room and a spacious deck overlooking a one acre pond - here you can enjoy a cool dip on warm summer days. If you are "country at heart" don't miss this one! Only \$174,900.00.

**E.A. MITCHELL LTD. REALTOR**  
310 MAIN ST., TRAFALGAR SQUARE  
MILTON, ONTARIO  
878-4118 Toronto Line 456-1453

## KNOW-HOW MAKES THE DIFFERENCE

Once you've made the decision to buy or sell your home, you'll need professional assistance. The process takes both time and effort. And you'll want to be assured the exchange of property is handled to your complete satisfaction.

With Colbeck Real Estate, you get know-how. Our experts have a grip on the Challenging—and changing—world of real estate. And they're ready to lend you a hand, to contribute their skills to make the transaction easy for you.

When you decide to buy or sell your home, be sure to call Colbeck Real Estate.

# 878-6000