

Automobile store opens

The fifth in a new chain of automobile service stores has been opened. Rob Reith, owner-manager of Auto Place on Steeles Ave. E., held a barbeque at his new store to "let people know we are here and to get acquainted."

Mr. Reith, who lives in Caledon, has several years experience in the auto parts business.

He started at the bottom in the shipping-receiving section of a major auto parts distributor and worked his way up to warehouse manager.

He left that job about four years ago and took over Trophy World in Mississauga, taking that business from a threadbare operation to a money maker.

About six months ago, Mr. Reith began talking with Dave Widdifield, general manager of Auto Place, about getting back in the auto parts business.

"I'd known Dave back in my first job when he was just a salesman who would drop by our warehouse," Mr. Reith said.

Auto Place is a division of Acklands Ltd., considered to be the largest auto parts business in the country.

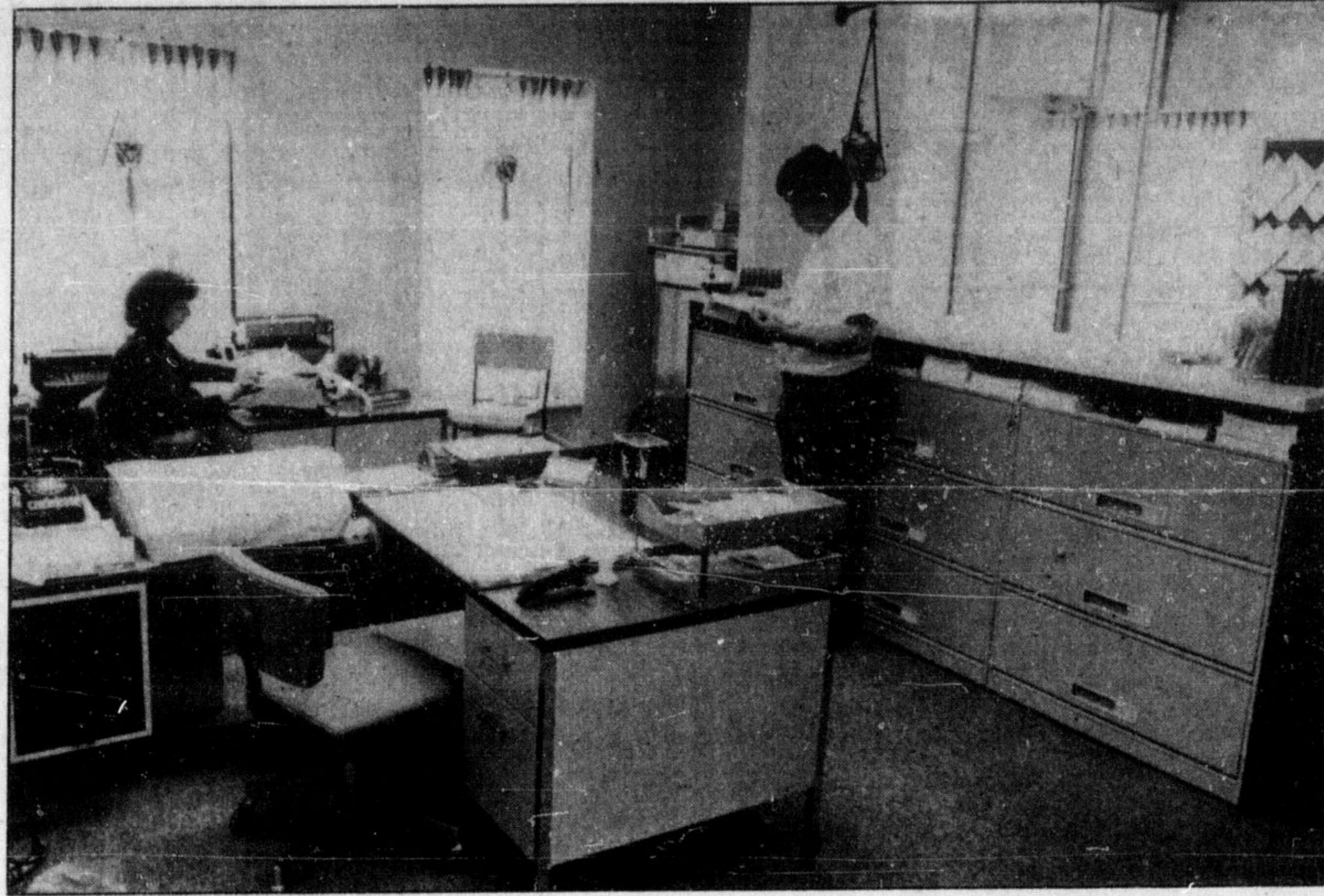
Spurred by the success of another country-wide chain of franchise auto parts stores, Auto Place was founded two years ago.

There are five stores in the chain. The first four were started in Toronto to test the marketplace. The fifth is in Milton.

"I took a look around and I liked what I saw. The company is solidly backed and that is important," Mr. Reith said.



THE FIFTH in a chain of Auto Place car parts and services stores was opened last week in Milton. The store is backed by Acklands Ltd., one of Canada's largest suppliers of automobile parts. Store manager-owner Rob Reith is shown with model Wendy Welsh who was on hand to help with the opening.



THE MILTON BRANCH of the Ministry of Agriculture and Food has a new office. Located in the north end of the plaza at the corner of Main St. and Wilson Dr., the office is more spacious than the previous Main St. quarters. Secretary Marg Prince (left) totals some figures and Doug Miller, assistant to Halton agriculture representative Henry Stanley, goes over some literature in the reception area. A public open house is planned Thursday, Oct. 11 from 2 to 4 and 7 to 9 p.m.

MAJOR EMPLOYERS
The Canadian char- than 150,000 employees,
tered banks have more 112,000 of them women.

MOHAWK INN'S

OPTIONS FOR ENTERTAINMENT

HUMBER RIVER VALLEY BOYS (BLUEGRASS)

October 10 to 13

CORNER OF GUELPH LINE AND HWY. 401

416 854-2277

DORSET ENGLISH STYLE FISH & CHIPS

17 WILSON DRIVE

Try one of these delicious mealtime combinations:

FISH 'N' CHIPS \$1.59

HALIBUT 'N' CHIPS \$2.09

SCALLOPS or SHRIMPS 'N' CHIPS \$1.99

Take advantage of our FREE DELIVERY on any order over \$6 (under \$6.00, only 75¢)

We will deliver to your office or factory - lunch or dinner - just give us ONE HOUR'S NOTICE!

Monday to Friday 9 a.m. to 10 p.m.
Saturday 10 a.m. to 9 p.m. **878-0909**

Chicken 'n' Chips

3 Great New Packs

Pick a pack. From a big meal to a snack! Colonel Sanders now offers you a choice of 3 new pack sizes, all with a generous helping of golden brown French fries. These new packs are tailored to fit your appetite. Enjoy one soon!

A one-pack for a quick, light snack. Perfect for small children. One piece of chicken only. **95¢**

A 3-pack, with three pieces of chicken. **\$2.15**

The new 4-pack, with 4 pieces of chicken. **\$2.75**

Kentucky Fried Chicken

Good chicken!

chicken Villa

Main & Commercial MILTON 878-4171

MILTON **LIONS**

BINGO

EVERY **WEDNESDAY**

7:30 p.m. Lions Hall

CALLING ALL CARS

SHOCK ABSORBERS

not more than **\$37.95** pair installed

Install two "SURE TRACKERS" Motorcraft shock absorbers front or rear

Inspect front and rear suspension all springs steering assembly steering linkage

Installation included Passenger cars and light trucks

FALL CHECK-UP

Includes **OIL AND FILTER** up to **9.95**

ALIGNMENT **14.95**

Parts and Additional Labour are extra - if required.

FALL TUNE-UP NOT MORE THAN

31.95 34.95 41.95

4-cylinder 6-cylinder 8-cylinder

Call Gary or Susan **878-2883**

★ THEY'LL KEEP YOU GOING ★

Hours: Mon. Thurs. Fri. 8-5
Tues. Wed. 8-10
Service Dept. Closed Saturdays

Sales ★ Rental ★ Leasing Open On Saturdays

MERCURY LINCOLN GALLINGER

MOTORS LIMITED - MILTON - ONTARIO

655 Main St. (At Wilson)

Entertainment

Tuesday meet

Halton Women's Place committee has been busy lately, organizing a variety of fund-raising events to bring in money for its women's shelter, to open in early 1980.

A doll house raffle at Milton Fair, a toy sale, pot luck and auction night, fashion shows, a teen dance and other events are helping raise the funds.

An open meeting is planned next Tuesday, Oct. 18 at 7.30 p.m. in Grace Anglican Church Hall, to which everyone interested in this project is welcome.

Frustration is when your cope runneth over.

"HOUSE OF CRAZIES"

a polite warning: **THIS HOUSE IS NOT A HOME!**

DYNAMITE!

Meet **SHERRI** for an evening of PLEASURE and TERROR

NURSE SHERRI

Starring JILL JACOBSON • GEOFFREY LAND • MARILYN JOI

PLUS 3RD HIT "THE SEXORCIST"

ADMITTANCE \$2.00 (10 YEARS OF AGE OR OVER)

PLAYS FRI, SAT, SUN OCT. 12, 13, 14

BOX OFFICE OPENS 7:00

SEXORCIST AT 7:30

SHERRI AT 8:50

CRAZIES AT 10:20

HWY 7, GUELPH 824-5431

SORRY, NO CHILDREN ADMITTED

ROXY THEATRE

Wed. 10 Thu. 11 Fri. 12 Sat. 13

John Travolta Olivia Newton-John

GREASE is the word

GREASE SHOW TIME 7 p.m. each evening

GREASE Sat. 13 Matinee 2 p.m.

IT IS NOW RATED ADULT

SATURDAY NIGHT FEVER

with BURT REYNOLDS Catch it!

SATURDAY NIGHT FEVER 9 p.m. each evening

Sun. 14 Mon. 15 Tues. 16

SIDNEY SHELDON'S BLOODLINE

SUNBURN

SHOW TIMES: Wed. Thurs. 8 p.m. Fri. Sat. 7 & 9 pm

1979-International Year of the Child Unicef Canada

Kiddies Corner

Win McDonald's Gift Certificates

SPONSORED BY: **McDonald's**

Nobody can do it like McDonald's can

Get your crayons and felt markers going, to win McDonald's gift certificates. Entries will be judged on originality. Send your entry to: Canadian Champion, 191 Main Street East, Milton, Ontario. Enter as often as you like.

NAME

ADDRESS

TELEPHONE

AGE

Spot the Differences There are 10 differences between these pictures. Can you find them?

START **FINISH**

Maze