

## Two wins for Brand in tennis

Paulene Brand turned back Ana Sjerps 6-3, 6-2 to win the ladies' singles title at the Milton Tennis Club Sunday.

Brand later combined with Sjerps to win ladies' doubles as the club held its annual club championships over the past two-week period.

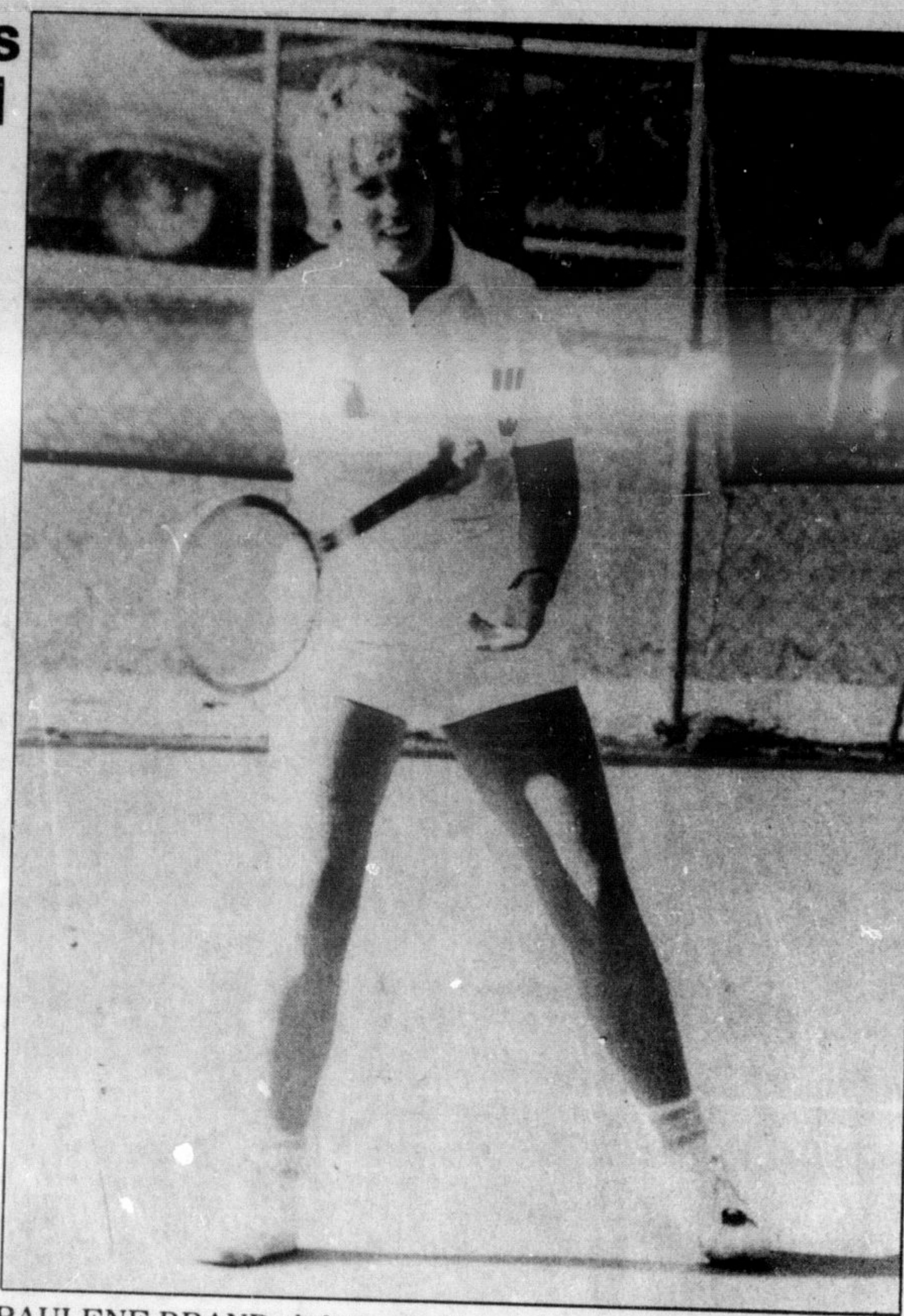
All finals except mixed doubles were completed this past weekend. A semi-final battle between Paul Belanger and Brand and the pair of Chuck Alcock and Sjerps will go Saturday with the winner slated to play the husband-and-wife team of Bill and Maureen Morgan Sunday at 1 p.m.

The doubles tandem of Brand-Sjerps took the crown with a 6-2, 6-3 win over Maureen Morgan and Moira White.

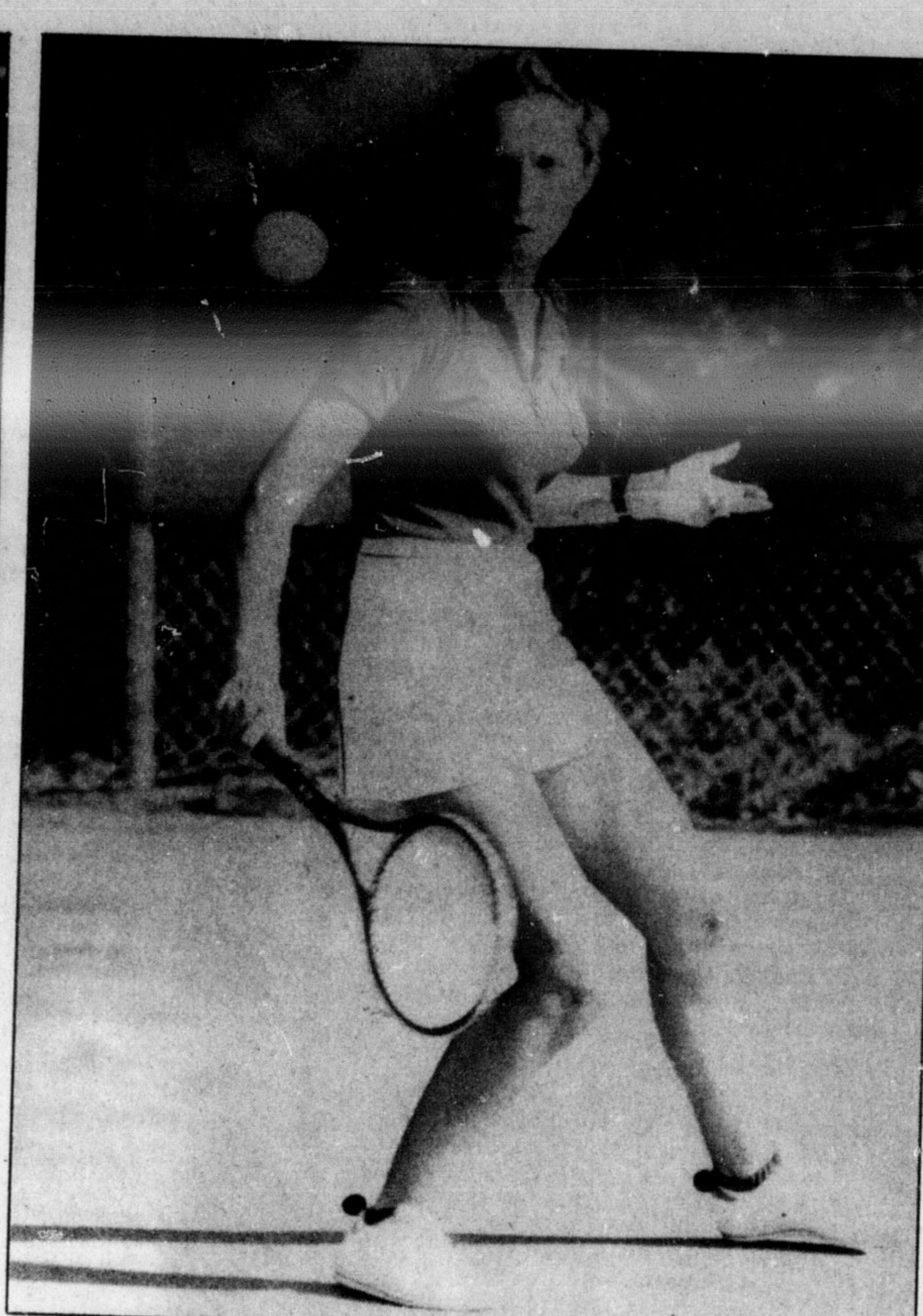
On the men's side, Alcock had a hand in winning both honors. He subdued a challenge from Mike Rigo to win 6-1, 6-2 in singles before teaming with Bill Morgan to win a marathon match over Don Hunt and Rigo 3-6, 7-5, 6-1.

In the men's semis, Rigo and Hunt had a long match of their own before Rigo emerged with a tie-breaker win of 6-4, 2-6, 7-6. The final tie-breaker went to 7-4.

PAULENE BRAND (left) turned back Anna Sjerps (right) to win the ladies' singles title at Milton Tennis Club. Later in the afternoon, the pair combined to win the doubles title with a victory over



Maureen Morgan and Moira White. All finals except the mixed doubles were completed on the weekend. The mixed goes Sunday at 1 p.m.



## Marlene Grimwood wins

Marlene Grimwood withstood challenges in three events to win three titles at the club championships of the Nassagaweya Tennis Club Sunday.

Mrs. Grimwood won the ladies' singles title before combining with Judy McKay to take the doubles crown and later with Peter Grimwood to win the mixed title.

Mrs. Grimwood easily won the ladies' singles with a comfortable 6-0, 6-1 victory over Celia Kainz.

The Grimwood-McKay tandem came from behind to outlast Lynne Gordon and Alva Mead 2-6, 6-3, 7-6 in ladies doubles.

The mixed doubles pair of Grimwood-Grimwood handled Lynne and Jim Gordon 6-1, 6-2.

The men's singles title

went to Steve McGroty in the day's most exciting match. McGroty needed to win a tiebreaker before emerging with a 7-5, 7-6 victory over Ken Mason.

The doubles pairing of Glenn Goldstraw and Peter Grimwood turned back Mark Schriber and McGroty 6-3, 6-4 in men's doubles.

In the junior competition, John Freeman defeated Brant Watson 3-6, 6-2, 6-4 in boys singles;

Cheryl Howard outlasted Sonja Rejc 6-3, 7-6 in girls' singles and Freeman and Watson won boys' doubles with a 6-1, 6-2 win over Harold Koehler and Adam Thomas.

Awards will be presented at the annual awards banquet Saturday Oct. 6 at the Campbellville Community Hall. Further information can be obtained from Marg Kittson at 335-7050.

**Players carded**

Georgetown defeated Milton Bonin's Esso peewee soccer reps by a 4-2 margin last Tuesday in a game which was a disgrace to Youth Soccer.

Seven Georgetown players received cards for foul language, dirty tactics, intentional kicking of the goalie, intentional tripping, back tackling and elbowing. Three Georgetown players received red cards and four received yellow cards while Milton received one red card for attempting to fight.

John Hinton and Glen Faulkner scored for Bonin's.

## In Bradford

# Atoms third in first tourney

Milton Glass and Mirror major atom rep soccer team demonstrated tournament competition doesn't faze them too much when they finished in third place in their first-ever tourney.

The atoms gave a strong account of themselves, winning the last two games by shutout scores at the Bradford and District Invitational tournament the weekend of Sept. 8-9.

Host Bradford turned back Milton 4-0 in the opener Saturday but the atoms rebounded the next day to win two of three games.

The squad lost to

Georgetown 5-2 before defeating Rush Henrietta (Rochester, New York) 4-0 and Stouffville 3-0.

Against Bradford, Milton came up flat although they had numerous opportunities to score, it just wasn't their day. Doug Drennan, Grant Meredith and Hallam Maynard were the steady Milton players.

The next day, Milton shook off the cobwebs and found a fresh surge of energy.

Their first game was against Georgetown who eventually won the tournament. Milton gave Georgetown a strong battle although Milton is

a second-division team and Georgetown plays in the first division.

Milton goalkeeper John Cochrane was the star of the game making some spectacular saves. Georgetown nursed a 2-1 lead before exploding for four goals in the last 10 minutes of the game.

Stephen Nutbrown and Mark Griffin scored for Milton which played one of its strongest games.

Nutbrown and Griffin were instrumental in Milton's 4-0 win over Rochester aided by some tenacious play from Geoff Pollen. The forward line put up a good battle as did the defence

of Eric Karp, David Sawdon, David Hinton and Brent Tasker.

In the final game, Milton was in total command from the starting whistle. Good efforts were put out from Keith Newell, Travis Cole and Mark Nelson. The scorers were Griffin, Nutbrown and Nelson.

Milton goes back into action tonight (Wednesday) with a Peel-Halton

match-up at E.C. Drury School at 6.30 p.m.

—Scouts report a fantastic paper drive Saturday. Many people had saved waste newspapers all summer for them.

—Planning a garage sale? Advertise it in Champion classifieds, and attract a bigger crowd of buyers.

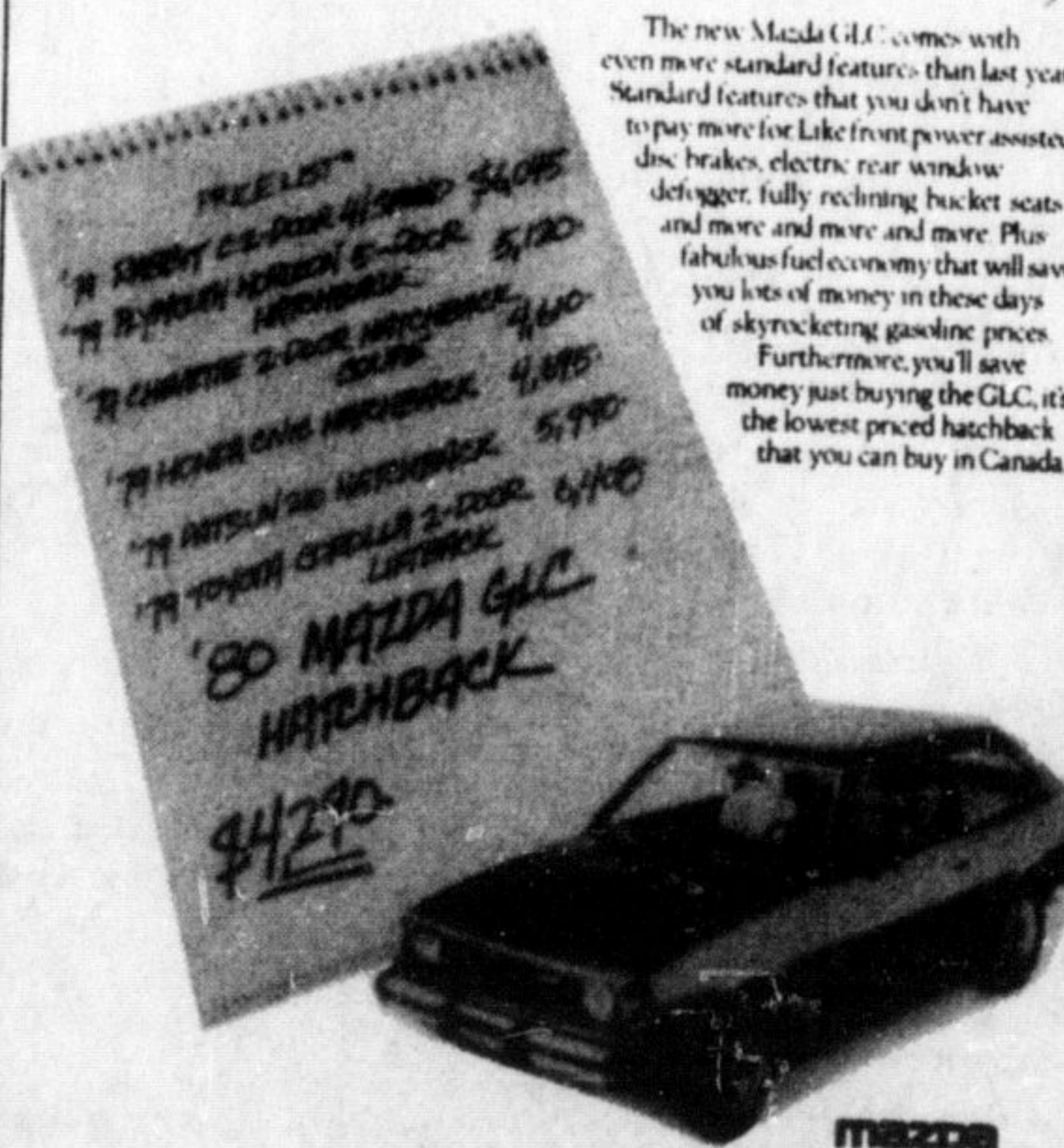
## MILTON TENNIS CLUB announces their ANNUAL MEETING & DINNER & DANCE

All Members & Members' Guests Welcome to be held at Wyldewood Golf & Country Club Trafalgar Road FRIDAY, OCTOBER 12th, 1979

Bar Opens at 6:30 p.m. Door Prizes Spot Dances \$10.00 PER PERSON



## MAZDA PROUDLY INTRODUCES THE NEW 1980 GLC: IT COMES WITH MORE, AND GOES FOR LESS.



**FOR PERSONALIZED SERVICE CAN-ALIGNMENT AND BRAKE SERVICE**

**BEE LINE AIR LIFT ALIGNER WITH OPTO FLEX**

**TONY "A" MECHANIC!**

Featuring:

- WHEEL ALIGNMENT
- GENERAL REPAIRS TO ALL MAKES OF CARS AND LIGHT TRUCKS
- BRAKES

OLD TIME PRIDE WITH SERVICE. THE LATEST IN MODERN EQUIPMENT. ALL AT VERY COMPETITIVE PRICES. DO YOU HAVE TO FIGHT WITH YOUR CAR TO KEEP IT ON THE ROAD? (SAFETY)

A PROFESSIONAL ALIGNMENT IS STILL A BARGAIN, IN COMPARISON TO THE PRICE OF TWO NEW FRONT TIRES.

**CAN-ALIGNMENT AND BRAKE SERVICE**

CHARGEX TONY WINDMOLLER UNITS 151 NIPISSING ROAD MILTON 878-8060

**INSULATE YOUR HOME**

for as low as **\$30.00**

Homes Built Prior to 1961 Are Now eligible For A Home Insulation Grant Up to \$500.00

**1/3 Labour Cost** Paid By Government

**100% Material Cost Up To \$350.00** Paid By Government

We Use Only C.M.H.C. Approved Fiberglass Insulation

Call Us Today For Details

**Prestige Insulation**

11 Canso Rd. Rexdale, Ont. M9W 4L9 **247-5451**

Modern blown Attic Insulation. Roof Vent Installation. All work Guaranteed.

# WANTED

## Serious Snowmobile Buyers...

Get your best pre-season price on a new 1980 Polaris Snowmobile at The Racers Edge NOW in September. Then Polaris will give you up to \$200.00 worth of snowmobile clothing and accessories at no additional cost.

**NO GIMMICKS • NO COME-ON**

Just good solid value...

**EXAMPLE:**

1980 TX-340 PRICE \$2,699.00

1980 APPOLLO 340 PRICE \$1,999.00

**PLUS UP TO \$200 IN MERCHANDISE AND ACCESSORIES**

This is a limited time offer. Expires Sept. 30, 1979 so SHOP - COMPARE AND SAVE when you buy NOW!

At The **RACERS EDGE LTD.** 32 BRONTE ST. MILTON 878-4212

**SHOP HOURS:**

|           |                 |
|-----------|-----------------|
| Mon-Wed   | 9 a.m. - 7 p.m. |
| Thurs-Fri | 9 a.m. - 9 p.m. |
| Saturday  | 9 a.m. - 5 p.m. |

**CHARGEX**

**Square One PRESENTS SLED-A-RAMA '80**

**FUN FOR THE ENTIRE FAMILY!**

**COME AND SEE THE NEWEST SNOWMOBILES AT THIS 1979/80 PREVIEW SHOWING**

Thursday, Friday and Saturday September 27, 28, 29

**GRAND PRIZE WEEKEND FOR TWO**

\* PRIZES \* SPECIAL EXHIBITS \* SPECIAL SHOW PRICES \*

**PARTICIPATING DEALERS**

|   |  |   |  |
|---|--|---|--|
| • <b>ARTIC CAT</b><br>Earl Herron Sales and Service (A)<br>Richmond Hill 889-0505 | • <b>JOHN DEERE</b><br>Arnold's Lawn & Garden (B)<br>Milton 878-1121 | • <b>KAWASAKI</b><br>Hazen Auto Service (C)<br>Georgetown 877-9473  | • <b>MOTO SKI</b><br>Ligar Twin Season Sales (D)<br>Mississauga 826-3609 |
| • <b>POLARIS</b><br>The Racers Edge Ltd. (E)<br>Milton 878-4212                   | • <b>SCORPION</b><br>Steve Brand (F)<br>Orangeville 519-941-6515     | • <b>SKI DOO</b><br>Engine Sales & Service (G)<br>Oakville 844-7348 | • <b>YAMAHA</b><br>No-Pa Sales & Service Ltd. (H)<br>Oakville 845-4428   |

**SHOW PRIZES:**

(A) Free Weekend For Two  
(B) Not available at p.t.  
(C) Racing Jacket  
(D) Safari Jacket  
(E) \$25 Gift Certificate  
(F) Two Portable Barbecues  
(G) Not available at p.t.  
(H) \$75.00 Gift Certificate

**PLUS A DRAW ON A 1980 POLARIS GEMINI IN SUPPORT OF O.C.C.S.**

**PLUS MUCH, MUCH MORE!!**

**Square One Shopping Centre**

LOWER LEVEL - MAIN ENTRANCE  
HWY. 10 & BURNHAMTHORPE RD.  
MISSISSAUGA, ONT.  
(A START PRODUCTION)